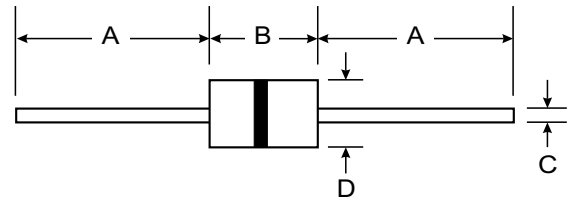


# GS37-141N - GS37-501M

## AXIAL LEADED GLASS TUBE

### Features

- Small Capacitance and excellent Insulation Resistance(100M $\Omega$  min)
- Small Size, No Polarity. No Dark effect
- Low Electrode Capacitance (1pF Max).
- Quick Response For Electrostatic, Voltage and low limiting voltage
- Stable for repeated discharge test conditions.
- Operating Temperature: -40°C ~ + 85°C
- Storage temperature: -40°C ~ + 125°C



DIP		
Dim	Min	Max
A	2.0	0.3
B	4.0	0.3
C	0.5	0.1
D	28.4	0.5
All Dimensions in mm		

### Application

- For instantaneous over-voltage protection to ADSL, ISDN,
- MODEM, FAX, TEL, Power Supplies, Alarm systems
- For Instantaneous over-voltage protection to RS485, RS232 Port, CATV, Video Transceiver.
- For Instantaneous Over-Voltage Protection Toammeter, Water Meter Auto Admin system, etc



### Electrical Characteristics

Part Number	Spark-Over Voltage		Insulation Resistance		Capacitance of electrostatic	capacity 8/20us	Surge Life
	DC Nominal value	Vs(V) (min-max)	Test voltage	IR (M $\Omega$ )	1KHz-6V(PF)		
GS37-141N	140V	(98V-182V)	DC100V	>1000M $\Omega$	1PF(MAX)	500A	10/700us 4KV 10times
GS37-181N	180V	(144V-216V)					
GS37-201M	200V	(160V-240V)					
GS37-251M	250V	(200V-300V)					
GS37-301M	300V	(240V-360V)					
GS37-401M	400V	(320V-480V)					
GS37-471M	470V	(400V-560V)	DC250V	>1000M $\Omega$			
GS37-501M	500V	(400V-600V)					

Model	Colour
GS37-141N	Brown
GS37-181M	Gray
GS37-201M	Red
GS37-251M	Red
GS37-301M	Red
GS37-401M	yellow
GS37-471M	yellow
GS37-501M	Green



**Part Number Description:**

<b>GS37</b>	<b>301</b>	<b>M</b>	
			DC Spark-Over Voltage Accuracy ±20
			DC Spark-Over Voltage 300V
			Dimension: Diameterφ2.0 Length 4.0mm