

1w, Fixed input, isolated & unregulated dual output



Patent Protection RoHS us

FEATURES

- Efficiency up to 79%
- Operating Temperature Range: -40°C ~ +85°C
- Isolation voltage: 1K VDC
- SMD Package
- Internal surface mounted design
- International standard pin-out

A_(X)T-1W series is specially designed for applications where an isolated voltage is required in a distributed power supply system. It is suitable for:

1. Where the voltage of the input power supply is stable (voltage variation: $\pm 10\%V_{in}$);
2. Where isolation is necessary between input and output (isolation voltage $\leq 1000VDC$);
3. Where do not has high requirement of line regulation, load regulation and the ripple & noise of the output voltage;
Such as: pure digital circuits, low frequency analog circuits, and IGBT power device driving circuits.

Selection Guide

Part No.	Input Voltage (VDC)	Output		Efficiency (%Min./Typ.) @ Full Load	Max. Capacitive Load (μF)	Certification
	Nominal (Range)	Output Voltage (VDC)	Output Current (mA)(Max./Min.)			
A0305XT-1W	3.3 (2.97-3.63)	± 5	$\pm 100/\pm 10$	67/71	100	
A0312T-1W		± 12	$\pm 42/\pm 4.2$	75/79		
A0315T-1W		± 15	$\pm 33/\pm 3.3$	75/79		
A0505(X)T-1W	5 (4.5-5.5)	± 5	$\pm 100/\pm 10$	67/71		UL
A0509(X)T-1W		± 9	$\pm 56/\pm 5.6$	73/77		UL
A0512(X)T-1W		± 12	$\pm 42/\pm 4.2$	74/78		UL
A0515(X)T-1W		± 15	$\pm 33/\pm 3.3$	74/78		UL
A1205(X)T-1W	12 (10.8-13.2)	± 5	$\pm 100/\pm 10$	67/71		UL
A1209(X)T-1W		± 9	$\pm 56/\pm 5.6$	69/73		UL
A1212(X)T-1W		± 12	$\pm 42/\pm 4.2$	70/74		UL
A1215(X)T-1W		± 15	$\pm 33/\pm 3.3$	70/74		UL
A1515(X)T-1W	15 (13.5-16.5)	± 15	$\pm 33/\pm 3.3$	75/79		
A2405(X)T-1W	24 (21.6-26.4)	± 5	$\pm 100/\pm 10$	68/72	UL	
A2409T-1W		± 9	$\pm 56/\pm 5.6$	70/74		
A2412(X)T-1W		± 12	$\pm 42/\pm 4.2$	72/76		
A2415(X)T-1W		± 15	$\pm 33/\pm 3.3$	73/77		
A2424(X)T-1W		± 24	$\pm 21/\pm 2.1$	74/78		

Notes: 1. The A_XT-1W series have no 3,6,8,9 pin. For example A0505XT-1W.
2. The capacitive loads of positive and negative outputs are identical.

Input Specifications

Item	Operating Conditions	Min.	Typ.	Max.	Unit
Input Current (full load / no-load)	3.3V input	--	420/40	--	mA
	5V input	--	250/30	--	
	12V input	--	110/20	--	
	15V input	--	80/11	--	
	24V input	--	57/7	--	
Surge Voltage (1sec. max.)	3.3V input	-0.7	--	5	VDC
	5V input	-0.7	--	9	
	12V input	-0.7	--	18	

Surge Voltage (1sec. max.)	15V input	-0.7	--	21	VDC
	24V input	-0.7	--	30	
Input Filter	Capacitor filter				

Output Specifications

Item	Operating Conditions	Min.	Typ.	Max.	Unit	
Output Voltage Accuracy	See tolerance envelope graph (Fig. 1)					
Line Regulation	Input voltage change: $\pm 1\%$	--	--	± 1.2	--	
Load Regulation	10%-100% load	5VDC output	--	12	--	%
		9VDC output	--	8	--	
		12VDC output	--	7	--	
		15VDC output	--	6	--	
		24VDC output	--	5	--	
Ripple & Noise*	20MHz bandwidth	--	50	75	mVp-p	
Temperature Drift Coefficient	100% load	--	--	± 0.03	%/°C	
Output Short Circuit Protection		--	--	1	s	

Note: 1. Dual output models unbalanced load: $\pm 5\%$.

2. Ripple and noise tested with "parallel cable" method, please see *DC-DC Converter Application Notes* for specific operation methods.

3. Supply voltage must be discontinued at the end of short circuit duration.

General Specifications

Item	Operating Conditions	Min.	Typ.	Max.	Unit	
Isolation Voltage	Input-output, with the test time of 1 minute and the leak current lower than 1mA	1000	--	--	VDC	
Isolation Resistance	Input-output, isolation voltage 500VDC	1000	--	--	M Ω	
Isolation Capacitance	Input-output, 100KHz/0.1V	A2424(X)T-1W	--	100	--	pF
		Other models	--	30	--	
Operating Temperature	Derating if the temperature $\geq 85^\circ\text{C}$ (see Fig. 2)	-40	--	85	°C	
Storage Temperature		-55	--	125		
Casing Temperature Rise	T _a =25°C	--	25	--		
Pin Welding Resistance Temperature	Welding spot is 1.5mm away from the casing, 10 seconds	--	--	300		
Reflow Soldering Temperature		Peak temp. $\leq 245^\circ\text{C}$, maximum duration time $\leq 60\text{s}$ at 217°C . For actual application, please refer to IPC/JEDEC J-STD-020D.1.				
Storage Humidity	Non-condensing	--	--	95	%	
Switching Frequency	100% load, nominal input voltage(3.3V/5V/12V)	--	100	--	KHz	
	100% load, nominal input voltage(15V/24V)	--	500	--		
MTBF	MIL-HDFK-217F@25°C	3500	--	--	K hours	

Physical Specifications

Casing Material	Black flame-retardant heat-proof epoxy resin (UL94-V0)
Package Dimensions	15.24*11.20*6.50 mm
Weight	1.7 g(Typ.)
Cooling Method	Free air convection

EMC Specifications

EMI	Conducted disturbance	CISPR22/EN55022 CLASS A (see Fig. 5 for recommended circuit)
EMS	Electrostatic discharge	IEC/EN61000-4-2 Contact $\pm 6\text{KV}$ perf. Criteria B

Product Characteristic Curve

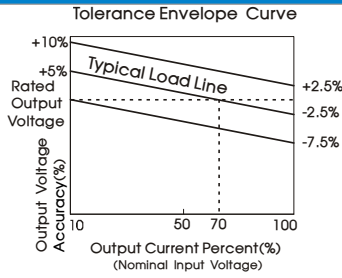


Fig. 1

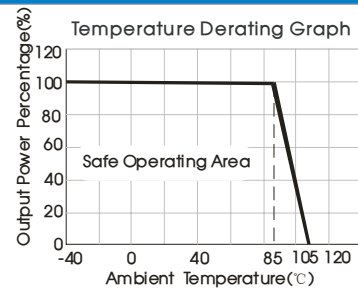
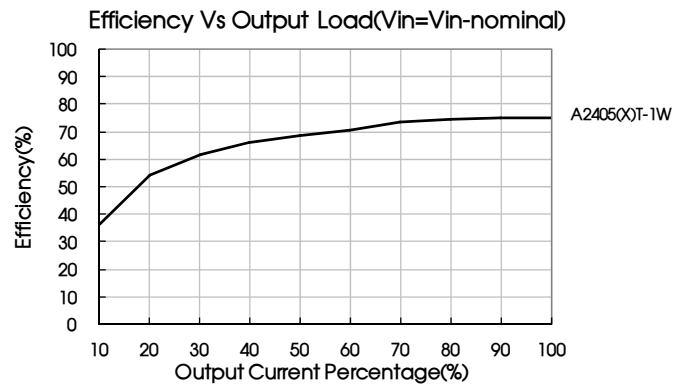
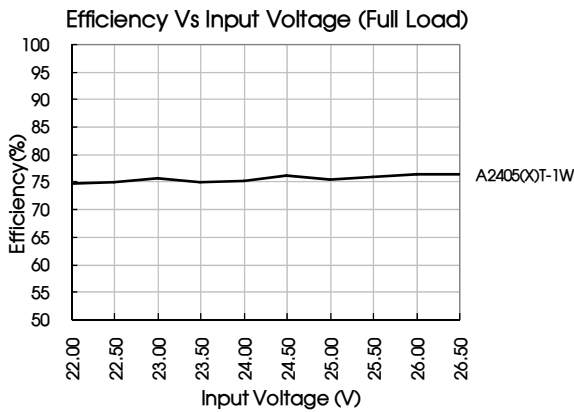
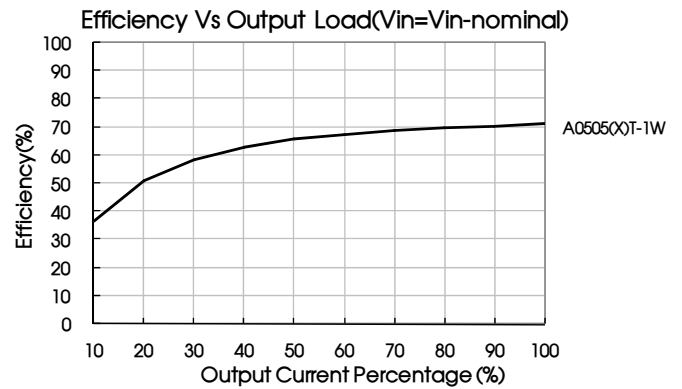
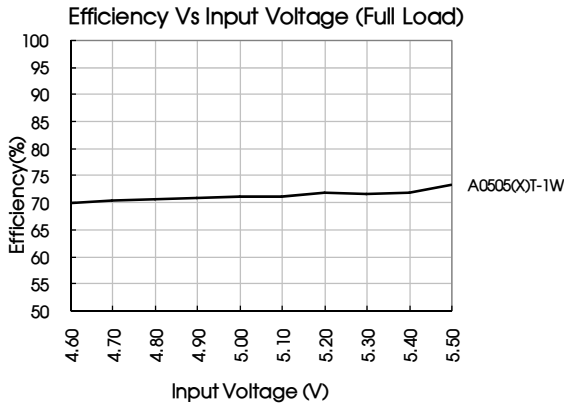


Fig. 2



Design Reference

1. Typical application

If it is required to further reduce input and output ripple, a filter capacitor can be connected to the input and output terminals, see Fig.3. Moreover, choosing suitable filter capacitor is very important, start-up problems may be caused by too large capacitance. To ensure the modules running well, the recommended capacitive load values are shown in Table 1.



Fig. 3

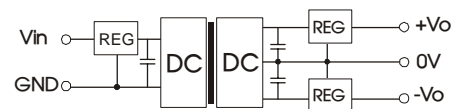


Fig.4

Recommended capacitive load value table (Table 1)

Vin (VDC)	Cin (μF)	Vout (VDC)	Cout (μF)
3.3	4.7	±5	4.7
5	4.7	±9	2.2
12	2.2	±12	2.2
15	2.2	±15	1
24	1	±24	0.47

It is not recommended to connect any external capacitor when output power is less than 0.5W.

2. EMC typical recommended circuit

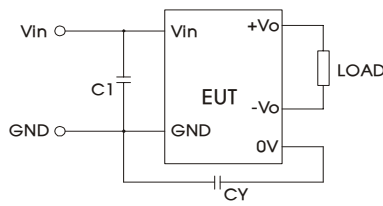


Fig.5

Input voltage (VDC)		15	24
EMI	C1	2.2μF /50V	4.7μF /50V
	CY	100pF/2000V	100pF/2000V

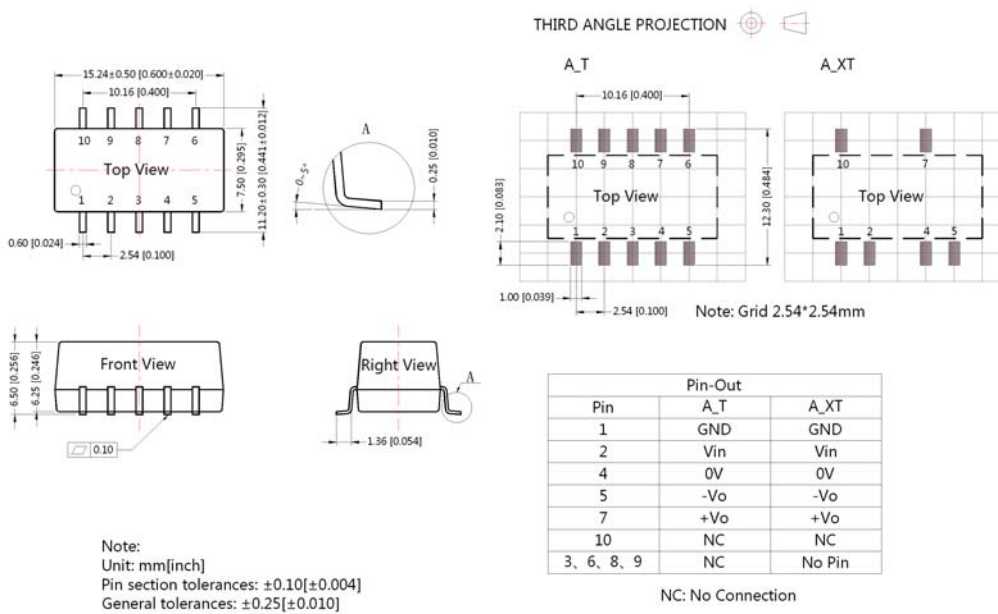
Note: Product bare input of 3.3V,5V,12V already meet CLASS A.

3. Output load requirements

To ensure the module work efficiently and reliably, during the operation, the min. output load should be no less than 10% of the full load. If the actual output power is low, please connect a resistor to the output terminal in parallel, with a recommended resistance which is 10% of the rated power, and derating is required during operation, or use our company's products with a lower rated output power (A_(X)T-W2 series).

4. For more information please find the application notes on www.mornsun-power.com

Dimensions and Recommended Layout



Note:
Unit: mm[inch]
Pin section tolerances: ±0.10[±0.004]
General tolerances: ±0.25[±0.010]

Notes:

1. Packing Information please refer to 'Product Packing Information'. Packing bag number: 58200019;
2. If the product is operated under the min. required load, the product performance cannot be guaranteed to comply with all performance indexes in this datasheet;
3. The max. capacitive load should be tested within the input voltage range and under full load conditions;
4. Unless otherwise specified, data in this datasheet should be tested under the conditions of Ta=25° C, humidity<75% when inputting nominal voltage and outputting rated load;
5. All index testing methods in this datasheet are based on our Company's corporate standards;
6. The performance indexes of the product models listed in this manual are as above, but some indexes of non-standard model products will exceed the above-mentioned requirements, and please directly contact our technicians for specific information;
7. We can provide product customization service;
8. Specifications of this product are subject to changes without prior notice.

MORNSUN Guangzhou Science & Technology Co., Ltd.

Address: No. 5, Kehui St., 1, Kehui Development Center, Science Ave., Guangzhou Science City, Luogang District, Guangzhou, P. R. China

Tel: 86-20-38601850-8801

Fax: 86-20-38601272

E-mail: info@mornsun.cn