

PLEASE CHECK WWW.MOLEX.COM FOR LATEST PART INFORMATION

Part Number: [0681450825](#)
Status: **Active**
Description: 2.50mm (.098") Pitch Wire-to-Board Header, 1.02mm (.040") Tab Type, Right Angle, 8 Circuits, Gray

Documents:

[3D Model](#) [Product Specification PS-68145-002 \(PDF\)](#)
[Drawing \(PDF\)](#) [RoHS Certificate of Compliance \(PDF\)](#)

General

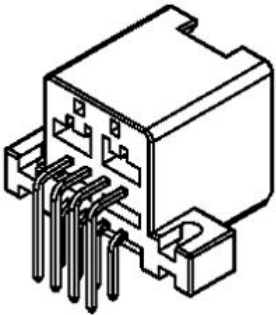
Product Family PCB Headers
Series [68145](#)
Application Wire-to-Board
Product Name N/A

Physical

Breakaway No
Circuits (Loaded) 8
Circuits (maximum) 8
Color - Resin Gray
First Mate / Last Break No
Glow-Wire Compliant No
Guide to Mating Part No
Keying to Mating Part None
Lock to Mating Part Yes
Material - Metal Brass
Material - Plating Mating Tin
Material - Plating Termination Tin
Material - Resin Polyester
Number of Rows 2
Orientation Right Angle
PC Tail Length (in) 0.157 In
PC Tail Length (mm) 4.00 mm
PCB Locator No
PCB Retention Yes
PCB Thickness Recommended (in) 0.062 In
PCB Thickness Recommended (mm) 1.60 mm
Packaging Type Tray
Pitch - Mating Interface (in) 0.098 In
Pitch - Mating Interface (mm) 2.50 mm
Pitch - Term. Interface (in) 0.098 In
Pitch - Term. Interface (mm) 2.50 mm
Plating min: Mating (µin) 32
Plating min: Mating (µm) 0.8
Plating min: Termination (µin) 32
Plating min: Termination (µm) 0.8
Polarized to Mating Part Yes
Polarized to PCB Yes
Shrouded Closed Ends
Stackable No
Surface Mount Compatible (SMC) No
Temperature Range - Operating -30°C to +85°C
Termination Interface: Style Through Hole

Electrical

Current - Maximum per Contact 5A



Series
image - Reference only

EU RoHS

**ELV and RoHS
Compliant**

REACH SVHC

Not Reviewed

Halogen-Free

Status

Halogen-Free

China RoHS



**Need more information on product
environmental compliance?**

Email productcompliance@molex.com
For a multiple part number RoHS Certificate of
Compliance, [click here](#)

Please visit the [Contact Us](#) section for any
non-product compliance questions.

Search Parts in this Series

[68145Series](#)

Mates With

[68508 Crimp Housing](#)

Voltage - Maximum

13V

Material Info

Reference - Drawing Numbers

Product Specification

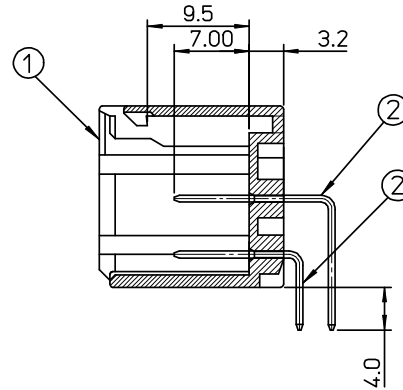
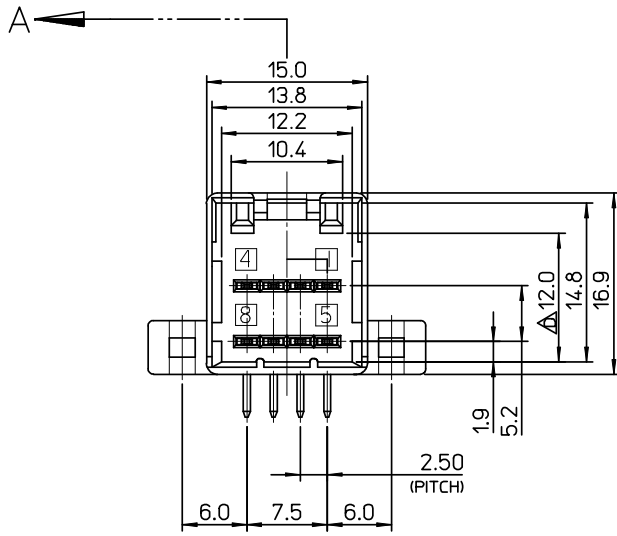
PS-68145-002

Sales Drawing

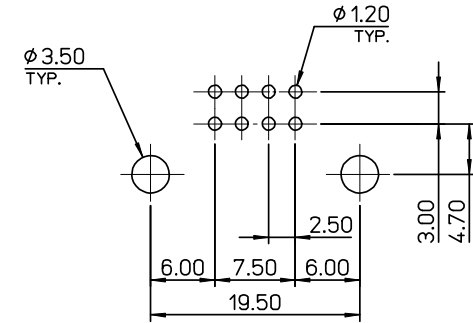
SD-68145-308

This document was generated on 04/07/2010

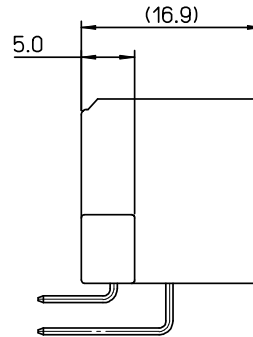
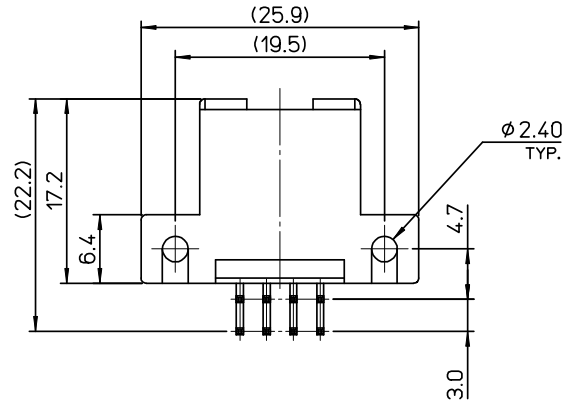
PLEASE CHECK WWW.MOLEX.COM FOR LATEST PART INFORMATION



SECTION A-A



RECOMMENDED P.C.B HOLD DIM.(MOUNT SIDE)



NOTES

1. APPLICABLE FEMALE HOUSING : 68508-081*

NO.	DESCRIPTION	MATERIAL	REMARK
1	HOUSING	POLYESTER, G/F 15%	UL94HB
2	PIN(L)	BRASS	PRE-TIN PLATED
3	PIN(S)		

NO.	ENG NO.	MATERIAL NO.	REMARK
1	68145-0821	681450821	BLACK
2	68145-0825	681450825	GRAY
3	68145-0826	681450826	WHITE

REVISED	EC NO: KOR2008-0116	2008/01/31
DRW:NEOKIM	2008/02/14	
CHKD:BCYOON		
APPR:YUNSIKKIM	2008/02/14	

QUALITY SYMBOLS
▽=0
▽=0

GENERAL TOLERANCES (UNLESS SPECIFIED)		
	mm	INCH
4 PLACES	± ---	± ---
3 PLACES	± ---	± ---
2 PLACES	± 0.25	± ---
1 PLACE	± 0.30	± ---
ANGULAR ± 1 °		
DRAFT WHERE APPLICABLE MUST REMAIN WITHIN DIMENSIONS		

DIMENSION STYLE	SCALE	DESIGN UNITS	THIRD ANGLE PROJECTION
MM ONLY	2:1	METRIC	
DRAWN BY	DATE	TITLE	
BCYOON	2002/08/05		
CHECKED BY	DATE	MOLEX INCORPORATED	
YSIKKIM	2002/08/05		
APPROVED BY	DATE	SD-68145-308	
CWLEE	2002/08/05		
MATERIAL NO.	DOCUMENT NO.	SHEET NO.	
SEE TABLE			

040 WIRE TO BOARD CONN. 8P HEADER ASS'Y-R/A(HZT)
MOLEX INCORPORATED
SD-68145-308
1 OF 1