

RL-6600

POWER-DISC INDUCTOR

DESCRIPTION

- Low Profile Drum Inductor

ENVIRONMENTAL DATA

- Storage temperature range: -55°C to +130°C
- Operating temperature range: -40°C to +130°C

PACKAGING INFORMATION

- Packaging information: pg. 509

FEATURES & APPLICATIONS

- Available in 114 standard values covering a wide range of inductance and currents
- High saturation flux density material makes these coils ideal for use in switching regulated power supply applications
- Used wherever high current choke values in a small physical height are needed
- Typical applications include: switching regulators, power amplifiers, power supplies, speaker crossover networks, RFI suppression, SCR, and TRIAC controls

Verify operation with sample in actual circuit. Order samples at www.rencousa.com.

MECHANICAL DIMENSIONS

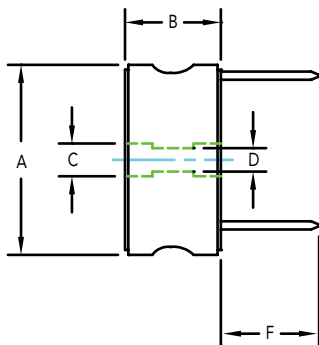
U.S. Standard (mm)

PART NUMBER	A (MAX.)	B (MAX.)	C (MAX.)	D (REF.)	F (MIN.)
RL-6600-1	1.60 (40.64)	0.75 (19.04)	0.290 (7.37)	FOR 8/32"	1.60 (40.64)
RL-6600-2	2.00 (50.80)	0.75 (19.04)	0.360 (9.14)	SCREW	2.00 (50.80)
RL-6600-3	2.40 (60.96)	0.85 (21.59)	0.360 (9.14)	W/ WASHER	2.40 (60.96)

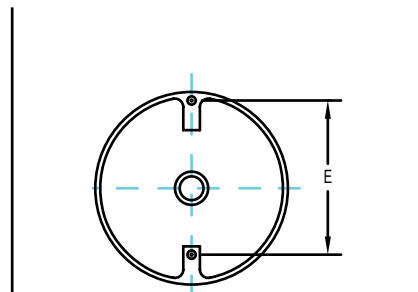
SEE SPECIFICATION TABLES FOR "E" DIMENSIONS

PART NUMBER	PART WEIGHT
RL-6600-1	60.0g (2.12oz)
RL-6600-2	124.0g (4.38oz)
RL-6600-3	197.0g (6.95oz)

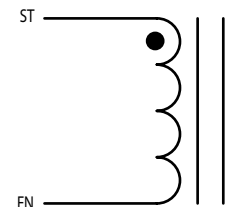
SIDE VIEW



BOTTOM VIEW



SCHEMATIC



RENCO ELECTRONICS INC.

595 International Place, Rockledge, FL 32955-4200 USA • www.rencousa.com • ISO 9001 Certified
Toll Free Engineering Hot Line: 800.645.5828 • P: 321.637.1000 • F: 321.637.1600



RL-6600-1

Renco Part No. RL-6600-1	Inductance (μ H)	DCR Max. (Ohms)	Isat (A)	Irms (A)	Dimension "E" Approx.
RL-6600-1-2.2	2.2	0.0028	152.0	28.20	1.10
RL-6600-1-3.9	3.9	0.0037	118.2	27.20	1.10
RL-6600-1-4.7	4.7	0.0040	96.7	25.70	1.10
RL-6600-1-6.8	6.8	0.0048	81.9	23.70	1.10
RL-6600-1-8.2	8.2	0.0055	71.0	22.00	1.16
RL-6600-1-12	12.0	0.0067	62.6	20.70	1.16
RL-6600-1-15	15.0	0.0070	56.0	20.50	1.16
RL-6600-1-18	18.0	0.0094	50.7	20.50	1.16
RL-6600-1-22	22.0	0.0103	46.3	20.40	1.18
RL-6600-1-27	27.0	0.0121	39.4	18.90	1.18
RL-6600-1-33	33.0	0.0163	36.7	14.00	1.17
RL-6600-1-39	39.0	0.0173	34.3	13.60	1.17
RL-6600-1-47	47.0	0.0196	30.4	12.80	1.17
RL-6600-1-56	56.0	0.0208	28.8	12.40	1.18
RL-6600-1-68	68.0	0.0292	26.0	10.70	1.17
RL-6600-1-82	82.0	0.0319	23.7	10.20	1.18
RL-6600-1-100	100.0	0.0348	21.7	9.80	1.18
RL-6600-1-120	120.0	0.0480	19.4	8.30	1.18
RL-6600-1-150	150.0	0.0530	17.5	7.90	1.18
RL-6600-1-180	180.0	0.0743	15.9	6.40	1.18
RL-6600-1-220	220.0	0.0833	14.6	6.00	1.19
RL-6600-1-270	270.0	0.0940	12.8	5.70	1.19
RL-6600-1-330	330.0	0.1270	11.7	4.80	1.12
RL-6600-1-390	390.0	0.1380	10.8	4.60	1.12
RL-6600-1-470	470.0	0.1840	9.8	4.10	1.12
RL-6600-1-560	560.0	0.2030	9.0	3.90	1.12
RL-6600-1-680	680.0	0.2790	8.1	3.20	1.12
RL-6600-1-820	820.0	0.3140	7.5	3.10	1.12
RL-6600-1-1000	1000.0	0.3480	6.7	2.90	1.14
RL-6600-1-1200	1200.0	0.4940	6.2	2.40	1.15
RL-6600-1-1500	1500.0	0.5480	5.5	2.30	1.14
RL-6600-1-1800	1800.0	0.7320	5.1	1.95	1.14
RL-6600-1-2200	2200.0	0.8090	4.5	1.80	1.12
RL-6600-1-2700	2700.0	1.1200	4.1	1.56	1.13
RL-6600-1-3300	3300.0	1.1820	3.7	1.46	1.13
RL-6600-1-3900	3900.0	1.3800	3.4	1.40	1.13

NOTES:

1. ELECTRICAL SPECIFICATIONS MEASURED AT 25°C
2. Isat - DC CURRENT THAT WILL CAUSE INDUCTANCE TO DROP BY 5%
3. Irms - CURRENT THAT CAUSES THE TEMPERATURE TO RISE APPROX. 40°C ABOVE AMBIENT OF 25°C
4. INDUCTANCE \pm 10% TESTED AT 10 kHz, 0.1 Vrms. VALUES 10 μ H AND BELOW ARE \pm 20%
5. PART FINISHED WITH 135°C POLYOLEFIN SLEEVING THAT MEETS UL-224 VW-1



RENCO ELECTRONICS INC.

595 International Place, Rockledge, FL 32955-4200 USA • www.rencousa.com • ISO 9001 Certified
Toll Free Engineering Hot Line: 800.645.5828 • P: 321.637.1000 • F: 321.637.1600



RL-6600-2

Renco Part No. RL-6600-2	Inductance (μ H)	DCR Max. (Ohms)	Isat (A)	Irms (A)	Dimension "E" Approx.
RL-6600-2-2.2	2.2	0.0021	205.00	34.70	1.21
RL-6600-2-3.3	3.3	0.0026	147.00	33.70	1.29
RL-6600-2-5.6	5.6	0.0036	114.00	31.00	1.29
RL-6600-2-8.2	8.2	0.0041	93.50	30.40	1.29
RL-6600-2-12	12.0	0.0047	79.00	29.60	1.37
RL-6600-2-15	15.0	0.0055	68.50	27.60	1.39
RL-6600-2-18	18.0	0.0062	60.50	25.90	1.37
RL-6600-2-22	22.0	0.0068	54.10	24.50	1.37
RL-6600-2-27	27.0	0.0077	48.90	23.30	1.37
RL-6600-2-33	33.0	0.0084	44.70	22.30	1.37
RL-6600-2-39	39.0	0.0112	41.40	18.40	1.37
RL-6600-2-47	47.0	0.0132	35.40	18.00	1.37
RL-6600-2-56	56.0	0.0142	33.20	17.50	1.44
RL-6600-2-68	68.0	0.0180	31.20	15.60	1.44
RL-6600-2-82	82.0	0.0202	27.80	14.80	1.43
RL-6600-2-100	100.0	0.0223	25.10	14.00	1.43
RL-6600-2-120	120.0	0.0324	22.80	11.70	1.44
RL-6600-2-150	150.0	0.0368	20.20	11.00	1.44
RL-6600-2-180	180.0	0.0468	18.70	9.50	1.44
RL-6600-2-220	220.0	0.0520	16.90	9.00	1.44
RL-6600-2-270	270.0	0.0587	14.90	8.50	1.46
RL-6600-2-330	330.0	0.0780	14.10	7.80	1.46
RL-6600-2-390	390.0	0.0844	13.00	7.50	1.45
RL-6600-2-470	470.0	0.1200	11.50	6.50	1.43
RL-6600-2-560	560.0	0.1310	10.60	6.20	1.44
RL-6600-2-680	680.0	0.1420	9.80	6.00	1.46
RL-6600-2-820	820.0	0.1870	8.80	4.90	1.45
RL-6600-2-1000	1000.0	0.2060	8.00	4.70	1.45
RL-6600-2-1200	1200.0	0.3010	7.40	3.85	1.45
RL-6600-2-1500	1500.0	0.3530	6.60	3.74	1.46
RL-6600-2-1800	1800.0	0.3830	5.80	3.43	1.46
RL-6600-2-2200	2200.0	0.5480	5.40	2.90	1.45
RL-6600-2-2700	2700.0	0.7930	4.74	2.28	1.46
RL-6600-2-3300	3300.0	0.8740	4.30	2.15	1.45
RL-6600-2-3900	3900.0	0.9480	3.97	2.08	1.46
RL-6600-2-4700	4700.0	1.2400	3.60	2.00	1.45
RL-6600-2-5600	5600.0	1.4000	3.30	1.88	1.46
RL-6600-2-6800	6800.0	1.8400	3.00	1.80	1.46
RL-6600-2-8200	8200.0	2.3800	2.79	1.50	1.47
RL-6600-2-10000	10000.0	2.7500	2.53	1.40	1.47

NOTES:

- ELECTRICAL SPECIFICATIONS MEASURED AT 25°C
- Isat - DC CURRENT THAT WILL CAUSE INDUCTANCE TO DROP BY 5%
- Irms - CURRENT THAT CAUSES THE TEMPERATURE TO RISE APPROX. 40°C ABOVE AMBIENT OF 25°C
- INDUCTANCE \pm 10% TESTED AT 10 kHz, 0.1 Vrms. VALUES 10 μ H AND BELOW ARE \pm 20%
- PART FINISHED WITH 135°C POLYOLEFIN SLEEVING THAT MEETS UL-224 VW-1



RENCO ELECTRONICS INC.

595 International Place, Rockledge, FL 32955-4200 USA • www.rencousa.com • ISO 9001 Certified
Toll Free Engineering Hot Line: 800.645.5828 • P: 321.637.1000 • F: 321.637.1600



RL-6600-3

Renco Part No. RL-6600-3	Inductance (μ H)	DCR Max. (Ohms)	Isat (A)	Irms (A)	Dimension "E" Approx.
RL-6600-3-1.0	1.0	0.0018	350.00	44.00	1.52
RL-6600-3-2.2	2.2	0.0024	213.00	40.00	1.52
RL-6600-3-4.7	4.7	0.0030	152.00	36.00	1.60
RL-6600-3-8.2	8.2	0.0042	118.00	32.00	1.29
RL-6600-3-12	12.0	0.0053	97.00	30.00	1.64
RL-6600-3-15	15.0	0.0060	82.00	28.00	1.69
RL-6600-3-18	18.0	0.0067	71.00	27.00	1.77
RL-6600-3-22	22.0	0.0076	62.00	26.00	1.77
RL-6600-3-27	27.0	0.0085	56.00	24.00	1.77
RL-6600-3-33	33.0	0.0094	51.00	23.00	1.86
RL-6600-3-39	39.0	0.0130	46.00	20.00	1.86
RL-6600-3-47	47.0	0.0150	42.00	19.00	1.78
RL-6600-3-56	56.0	0.0160	39.00	18.00	1.88
RL-6600-3-68	68.0	0.0210	36.00	16.00	1.88
RL-6600-3-82	82.0	0.0240	32.00	14.00	1.82
RL-6600-3-100	100.0	0.0310	30.00	13.00	1.77
RL-6600-3-120	120.0	0.0350	27.00	12.00	1.87
RL-6600-3-150	150.0	0.0450	25.00	11.00	1.77
RL-6600-3-180	180.0	0.0550	22.00	9.50	1.83
RL-6600-3-220	220.0	0.0750	20.00	8.00	1.75
RL-6600-3-270	270.0	0.0840	18.00	8.00	1.80
RL-6600-3-330	330.0	0.0930	16.00	7.50	1.80
RL-6600-3-390	390.0	0.1270	15.00	6.50	1.80
RL-6600-3-470	470.0	0.1380	14.00	6.00	1.80
RL-6600-3-560	560.0	0.1920	13.00	5.00	1.80
RL-6600-3-680	680.0	0.2100	11.00	5.00	1.76
RL-6600-3-820	820.0	0.2870	10.00	4.00	1.69
RL-6600-3-1000	1000.0	0.3200	9.50	4.00	1.72
RL-6600-3-1200	1200.0	0.3490	8.50	3.80	1.76
RL-6600-3-1500	1500.0	0.4920	7.80	3.20	1.72
RL-6600-3-1800	1800.0	0.5440	7.00	3.00	1.75
RL-6600-3-2200	2200.0	0.6910	6.25	2.30	1.71
RL-6600-3-2700	2700.0	0.7640	5.65	2.20	1.77
RL-6600-3-3300	3300.0	1.0270	5.21	1.98	1.71
RL-6600-3-3900	3900.0	1.1130	4.79	1.90	1.70
RL-6600-3-4700	4700.0	1.5650	4.36	1.65	1.72
RL-6600-3-5600	5600.0	1.7000	4.00	1.58	1.72
RL-6600-3-6800	6800.0	1.8540	3.58	1.50	1.46

NOTES:

1. ELECTRICAL SPECIFICATIONS MEASURED AT 25°C
2. Isat - DC CURRENT THAT WILL CAUSE INDUCTANCE TO DROP BY 5%
3. Irms - CURRENT THAT CAUSES THE TEMPERATURE TO RISE APPROX. 40°C ABOVE AMBIENT OF 25°C
4. INDUCTANCE \pm 10% TESTED AT 10 kHz, 0.1 Vrms. VALUES 10 μ H AND BELOW ARE \pm 20%
5. PART FINISHED WITH 135°C POLYOLEFIN SLEEVING THAT MEETS UL-224 VW-1



RENCO ELECTRONICS INC.

595 International Place, Rockledge, FL 32955-4200 USA • www.rencousa.com • ISO 9001 Certified
Toll Free Engineering Hot Line: 800.645.5828 • P: 321.637.1000 • F: 321.637.1600

