

SMB Termination

50Ω

DC to 6000 MHz

ROSE-50+
ROSE-50



CASE STYLE: LL604

Connectors	Model	Price	Qty.
SMB-FEM	ROSE-50(+)	\$9.95 ea.	(1-9)

+ RoHS compliant in accordance with EU Directive (2002/95/EC)

The +Suffix identifies RoHS Compliance. See our web site for RoHS Compliance methodologies and qualifications.

Maximum Ratings

Operating Temperature	-55°C to 100°C
Storage Temperature	-55°C to 100°C

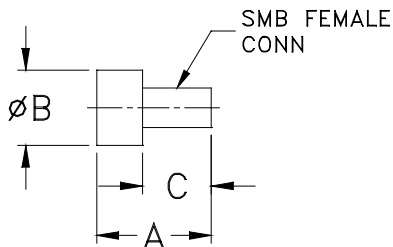
Features

- SMB connector with female center contact
- wideband, DC to 6000 MHz
- rugged construction

Applications

- cellular communications
- test set-up
- instrumentation
- PCS

Outline Drawing



Outline Dimensions (inch/mm)

A	B	D	wt
0.55	0.36	0.33	grams
13.97	9.14	8.38	4.0

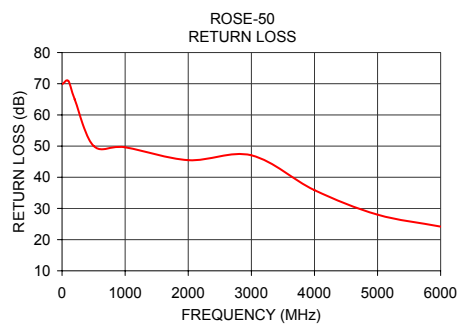
Electrical Specifications

FREQUENCY (MHz)	IMPEDANCE (OHMS)	RETURN LOSS (dB) MIN.			POWER RATING* (W)
		DC-2 GHz	DC-4 GHz	DC-6 GHz	
DC-6000	50	30	23	20	0.50

*At 70°C, derate linearly at 0.005W/°C to .35W at 100°C.

Typical Performance Data

Frequency (MHz)	Return Loss (dB)
1.00	69.84
100.00	70.87
200.00	65.00
500.00	50.04
1000.00	49.61
2000.00	45.48
3000.00	47.04
4000.00	35.88
5000.00	28.01
6000.00	24.18



Mini-Circuits®
ISO 9001 ISO 14001 CERTIFIED

ALL NEW
minicircuits.com

P.O. Box 350166, Brooklyn, New York 11235-0003 (718) 934-4500 Fax (718) 332-4661 For detailed performance specs & shopping online see Mini-Circuits web site



The Design Engineers Search Engine Provides ACTUAL Data Instantly From MINI-CIRCUITS At: www.minicircuits.com

RF/IF MICROWAVE COMPONENTS

REV. C
M98898
ROSE-50
RS/TD/CP/AM
070305