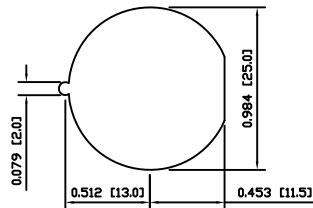
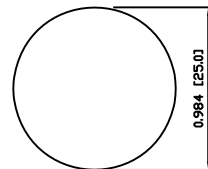


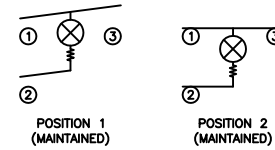
SUGGESTED PANEL CUTOUT



ALTERNATE PANEL CUTOUT



**SCHEMATIC**



**SPECIFICATIONS**

**FUNCTION:**  
 1P1T OFF-ON

**RATINGS:**  
 ANSI/UL 1054 and CAN/CSA C22.2 No.55 (E194579):  
 16A 125VAC [UR, cUR]  
 1/2HP 125VAC [UR, cUR]  
 3/4HP 250VAC [UR, cUR]

**EN 61058-1:2002:**  
 16(6)A 250V~ 1E4 T125/55 [ENEC14, SEMKO]  
 10(4)A 250V~ 5E4 T125/55 [ENEC14, SEMKO]

**ILLUMINATION VOLTAGE:**  
 125V

**CONTACT RESISTANCE:**  
 Initial: 35mΩ Max. at 50VAC

**INSULATION RESISTANCE:**  
 100MΩ Min. at 500VDC

**DIELECTRIC STRENGTH:**  
 1,500VAC For 1 Minute

**ELECTRICAL LIFE:**  
 6,000 Cycles [UR, cUR]  
 10,000 Cycles [ENEC14, SEMKO]  
 50,000 Cycles [ENEC14, SEMKO]

**TEMPERATURE:**  
 Operating: -20°C to 105°C [UR, cUR]  
 Operating: -20°C to 125°C [ENEC14, SEMKO]

**APPROVALS:**



**COLORS AND MARKINGS**

**BODY:**  
 Black

**ACTUATOR:**  
 Transparent Red Glossy Finish

**MARKINGS:**  
 None

**MARKING COLOR:**  
 None

**MATERIALS**

**BODY:**  
 Polyamide 6/6 (PA66), UL94 V-2

**ACTUATOR:**  
 Polycarbonate (PC), UL94 V-2

**CONTACT CARRIER:**  
 Polyamide 6/6 (PA66), UL94 V-2

**LAMP:**  
 Incandescent Bulb

**RESISTOR:**  
 Carbon Film Resistor

**SPRINGS:**  
 Steel

**MOBILE CONTACT:**  
 Silver Plated Copper

**CONTACTS:**  
 Silver Plated Copper

**TERMINALS:**  
 Silver Plated Copper  
 Brass

BODY	A	09/08/07	CAB
COLORS	A	09/08/07	CAB
MATERIALS	A	09/08/07	CAB
SPECIFICATIONS	B	10/05/25	CAB
REFERENCE	REV.	DATE	BY

THE INFORMATION CONTAINED IN THIS DOCUMENT IS PROPRIETARY TO E-SWITCH AND IS NOT TO BE COPIED OR TRANSFERRED

A	INITIAL RELEASE	19848	11/04/15	CAB
REV.	DESCRIPTION	PCR	DATE	DRAWN BY

DIMENSIONS	
INCHES [MILLIMETERS]	
GENERAL TOLERANCES	
±0.008 [±0.2] / ±1'	
SCALE	PROJECTION
DRAWING NOT TO SCALE	1:1

TITLE PR141C1000-114			
ITEM NUMBER	DATE	REVISION	
38-PR141C1000114	AUGUST 15, 2011	A	