



# MEAX-5000-CM

## 5G NR Connector Mount

Part #: 100-00215-01



### Description

The MEA-5000-CM connector Mount Antenna is a 5G NR antenna solution, with high gain and efficiency ideal for maintaining constant mobile connectivity. The MEA-5000-CM covers all 5G, 4G, 3G and 2G frequencies. This is an ideal antenna for telematics systems, remote surveillance, asset tracking and any IOT system applications. The high performance make this antenna ideal for the most challenging installations.

This connector mount antenna is easy to install with maximum durability.

### Electrical Specification

Parameter	Specification		
Center Frequency	617-960 MHz	1427-2690 MHz	3300-3800 MHz
Band	450 MHz	1500, 1600, 1700, 1800, 1900, 2000, 2100, 2300, 2500, 2600 MHz	3300, 3500, 3600, 3700 MHz
Return Loss	-13.7 dB	-14.3 dB	-4.4 dB
VSWR	1.6:1	1.7:1	6.3:1
Efficiency	50.0%	55.2%	28.1%
Peak Gain	-0.4 dBi	0.6 dBi	-1.6 dBi
Average Gain	-4.1dB	-3.0 dB	-5.9 dB
Impedance	50 Ω		
Polarization	Linear		
Radiation Pattern	Omni-Directional		
Max. Input Power	25 W		

### Mechanical Specification

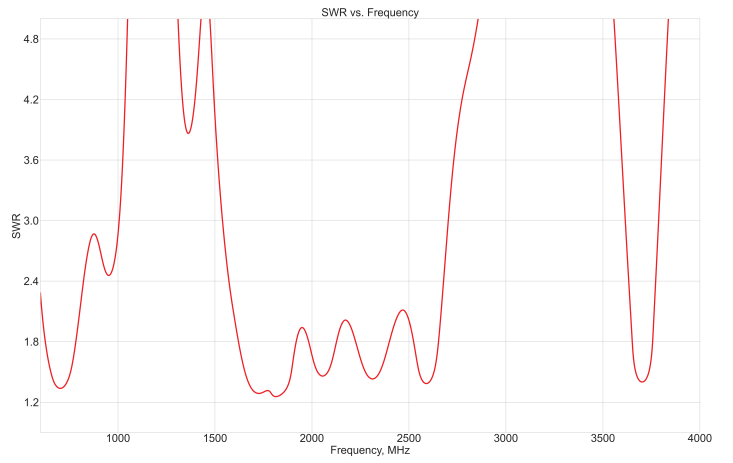
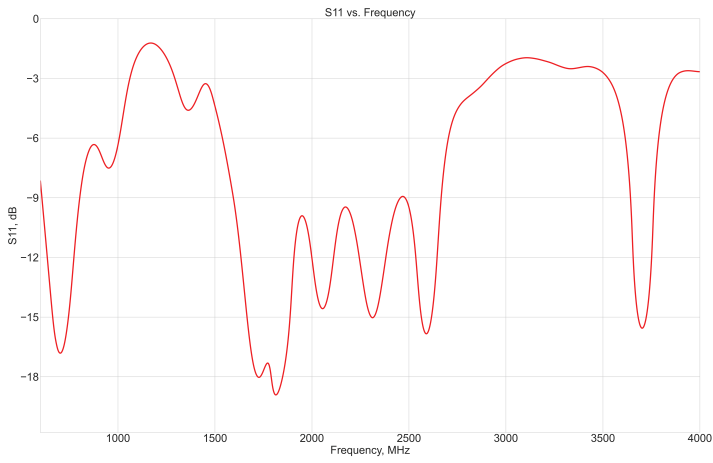
Parameter	Specification
Antenna Dimensions	192 × 20 × 18 mm
Weight	37 g
Operating Temperature	-40°C to + 85°C
Mounting Type	Connector Mount
Connector	SMA-Male
Connector Feature	Waterproof
Radome	PC/ABS UV Stable
Radome color	Black or White
Substance Compliance	RoHS, REACH
Certificates	IP67, IP69

### Features

- 5G NR - 617-960 MHz; 1525-2690 MHz; 3300-3800 MHz)
- Easy mounting: Connector Mount
- Ultra-Wide band Antenna
- High Performance
- Ground Plane Independent
- Waterproof
- Dimensions 192 × 20 × 18 mm
- IP67, IP69

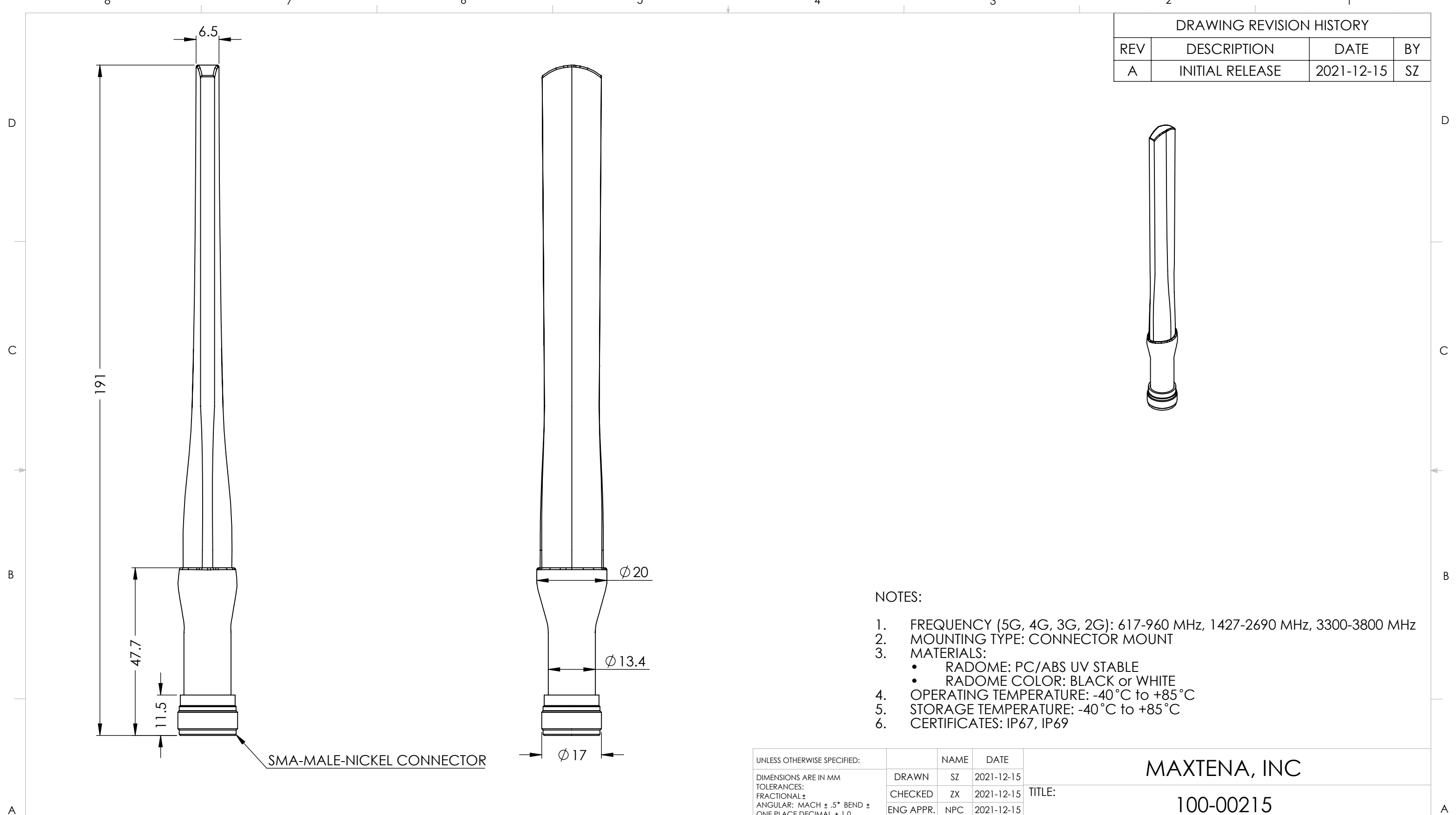
### Applications

- Asset Tracking
- Telematics
- Container & Logistics
- Automotive
- Industrial Applications
- IOT Applications



Maxtena Inc.  
 7361 Calhoun Place, Suite 102  
 Rockville, MD 20855  
 1-877-629-8362  
 info@maxtena.com  
[www.maxtena.com](http://www.maxtena.com)

DRAWING REVISION HISTORY			
REV	DESCRIPTION	DATE	BY
A	INITIAL RELEASE	2021-12-15	SZ



NOTES:

- FREQUENCY (5G, 4G, 3G, 2G): 617-960 MHz, 1427-2690 MHz, 3300-3800 MHz
- MOUNTING TYPE: CONNECTOR MOUNT
- MATERIALS:
  - RADOME: PC/ABS UV STABLE
  - RADOME COLOR: BLACK or WHITE
- OPERATING TEMPERATURE: -40°C to +85°C
- STORAGE TEMPERATURE: -40°C to +85°C
- CERTIFICATES: IP67, IP69

ITEM 100-00215 REVISION HISTORY			
REV	DESCRIPTION	DATE	BY
1	INITIAL RELEASE	2021-12-15	SZ

100-00215 CONFIGURATION TABLE		
DASH NO	CONNECTOR TYPE	RADOME COLOR
-01	SMA-MALE-NICKEL	BLACK

UNLESS OTHERWISE SPECIFIED:

DIMENSIONS ARE IN MM  
TOLERANCES:  
FRACTIONAL ±  
ANGULAR: MACH ± .5° BEND ±  
ONE PLACE DECIMAL ± 1.0  
TWO PLACE DECIMAL ± .50

INTERPRET GEOMETRIC TOLERANCING PER:

THIRD ANGLE PROJECTION  
DO NOT SCALE DRAWING

	NAME	DATE
DRAWN	SZ	2021-12-15
CHECKED	ZX	2021-12-15
ENG APPR.	NPC	2021-12-15
MFG APPR.		
Q.A.		

CAD MAINTAINED. CHANGES SHALL BE INCORPORATED BY THE DESIGN ACTIVITY.

MAXTENA, INC

TITLE:  
100-00215  
MEA-5000-CM

SIZE DWG. NO. REV  
**B** 117-00543-01 **A**

CAGE CODE: 5KQH7 SCALE: NONE SHEET 1 OF 1