

ATLANTIC VERSION TERMINATOR INTERFACE ADAPTER	PART NUMBER	REVISION	DESCRIPTION	FEED TYPE	APPLICATOR STYLE CONVERSION CHART						
					CONVERT TO	PART NUMBERS REQUIRED					
	2150047-2	A	FINE CRIMP HEIGHT ADJUST	PNEUMATIC	-	-	-	-	-	-	
	2150047-5	A	FINE CRIMP HEIGHT ADJUST	SERVO LATCH PLATE ⁴	SERVO LATCH PLATE	2119951-1	1901697-1	8-2150047-5	-	-	2168400-7 (QUANTITY 2)
					SMART APPLICATOR	2161326-1	-	-	8-2150047-4	-	-
	2150047-6	A	NON-CRIMP HEIGHT ADJUST	SERVO LATCH PLATE ¹¹	-	-	-	-	-	-	
	2150047-7	A	FINE CRIMP HEIGHT ADJUST	NONE	-	-	-	-	-	-	
7-2150047-7	A	CRIMP TOOLING KIT	-	-	-	-	-	-	-		

APPLICATOR DATA		
CRIMP	SIZE	TYPE
WIRE	1.57 mm [.062]	F
INSUL	3.56 mm [.140]	F
APPL INSTRUCTIONS 408-10390		

TERMINAL DATA: TE TERMINAL		TE CRIMP SPECIFICATION	
TERMINAL NAME: 187 SERIES POSITIVE LOCK EX			
WIRE STRIP LENGTH		INSULATION DIAMETER RANGE	
3.50-4.50 mm [.138-.177 IN]		Ø1.30-3.60 mm [.051-.142 IN]	
TERMINAL APPLICATION SPECIFICATION (A)114-5114	-	-	-
(B)114-5125	-	-	-
TERMINALS APPLIED			
TE TERMINAL (A) 173722-1	TE TERMINAL (B) 175032-1	TE TERMINAL	TE TERMINAL

WIRE SIZE	CRIMP HEIGHT mm [INCH]	CRIMP HEIGHT REFERENCE SETTING
20 AWG OR 0.50mm2	1.04+/-0.05 [.041+/-0.002]	7.0
22 AWG OR 0.30mm2	1.01+/-0.05 [.040+/-0.002]	7.2
24 AWG OR 0.20mm2	0.94+/-0.05 [.037+/-0.002]	8.0
26 AWG OR 0.15mm2	0.90+/-0.05 [.035+/-0.002]	8.5

- RECOMMENDED SPARE PARTS
- GREASE BEARING SURFACES LIGHTLY
- 3. LUBRICATE DAILY PER THE APPLICATOR INSTRUCTION SHEET SUPPLIED WITH THE APPLICATOR.
- APPLICATOR SPECIFIC DATA TO BE ENTERED INTO BLANK MEMORY CHIP AT ASSEMBLY. SEE BELOW FOR "PART NUMBER: PNEUMATIC FEED WITH "SMART APPLICATOR" CONVERSION: 8-2150047-4 SERVO FEED WITH "FINE CRIMP HEIGHT ADJUST": 8-2150047-5 SERVO FEED WITH "NON-CRIMP HEIGHT ADJUST": 8-2150047-6
- 5. ADJUSTMENT OF THE STRIPPER MAY BE REQUIRED WHEN MOVING THE APPLICATOR BETWEEN BENCH AND LEADMAKER APPLICATIONS.
- APPLY PART NUMBER 1-23419-5 LOCTITE TO THREADS OF ITEMS 62,180 APPLY PART NUMBER 2-23419-6 LOCTITE TO THREADS OF ITEMS 242. FOR -6 ONLY APPLY PART NUMBER 1-23419-5 LOCTITE TO THREADS OF ITEM 37.
- GREASE THREADS, GROOVE AND O-RING ON ITEMS 35 & 252.
- MAGNET, ITEM 166 MUST BE ORIENTED CORRECTLY IN ORDER TO PROPERLY ACTUATE THE COUNTER.
- CRIMP HEIGHT REFERENCE SETTING WAS THE SETTING USED WHEN THE APPLICATOR WAS QUALIFIED AT THE FACTORY. ADJUSTMENT MAY BE NECESSARY WHEN RUNNING APPLICATOR IN THE FIELD.
- TERMINAL PITCH NOT COMPATIBLE WITH MECHANICAL FEED.
- WHEN ASSEMBLING -6 NON-CRIMP HEIGHT ADJUST APPLICATOR USE SHIM PACK 2119957-2 TO ALIGN APPLICATOR'S MAXIMUM WIRE CRIMP HEIGHT AT NORMAL TERMINATOR SHUT HEIGHT
- TERMINAL LUBRICANT IS RECOMMENDED FOR 175032.
- CUT TO LENGTH AT ASSEMBLY.
- LOCATE THE FEED FINGER AT THE END OF THE INSULATION BARREL TO PROPERLY FEED THE TERMINAL.

***WARNING**
 ON INSTALLATION, SET WIRE DISC, ITEM 40 TO LARGEST WIRE SIZE SETTING. USE OF SETTINGS BELOW MINIMUM REQUIRED CRIMP HEIGHT SETTING WILL CAUSE DAMAGE TO CRIMP TOOLING.

-77-7	-6	-5	-2	PART NO	DESCRIPTION	ITEM NO
-	-	1	-	2119957-2	APPLICATOR SHIM PACK	260
-	1	-	1	8-21084-0	O-RING, .676 ID, .070 DIA. MAT.	252
-	-	-	-	2119640-1	PUSH ROD, AIR FEED	250

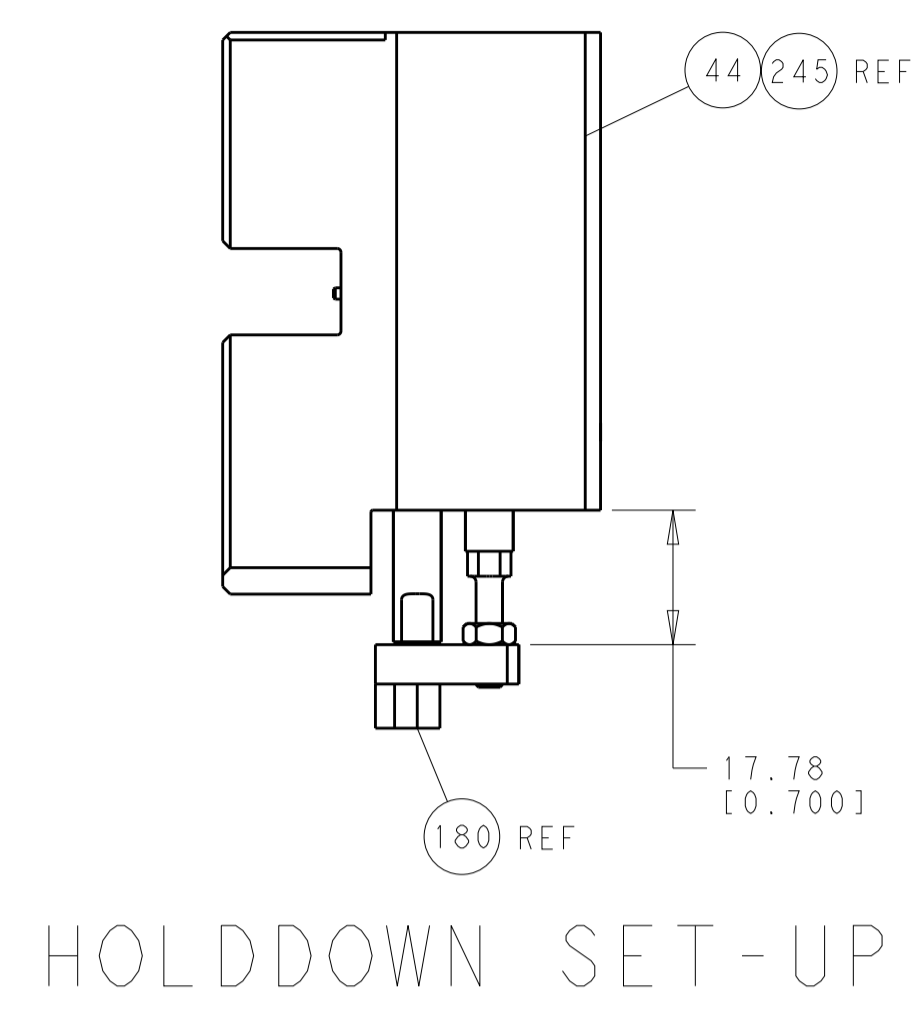
ATLANTIC VERSION
 Shown on sheets 1 of 4 & 2 of 4
 (Pacific version shown on sheets 3 of 4 & 4 of 4)

SET UP GAUGE	LOC	DIST	REVISIONS			
2119599-2	A	66	REV	DATE	BY	APPV
			A	RELEASED	24DEC2014	KH TE

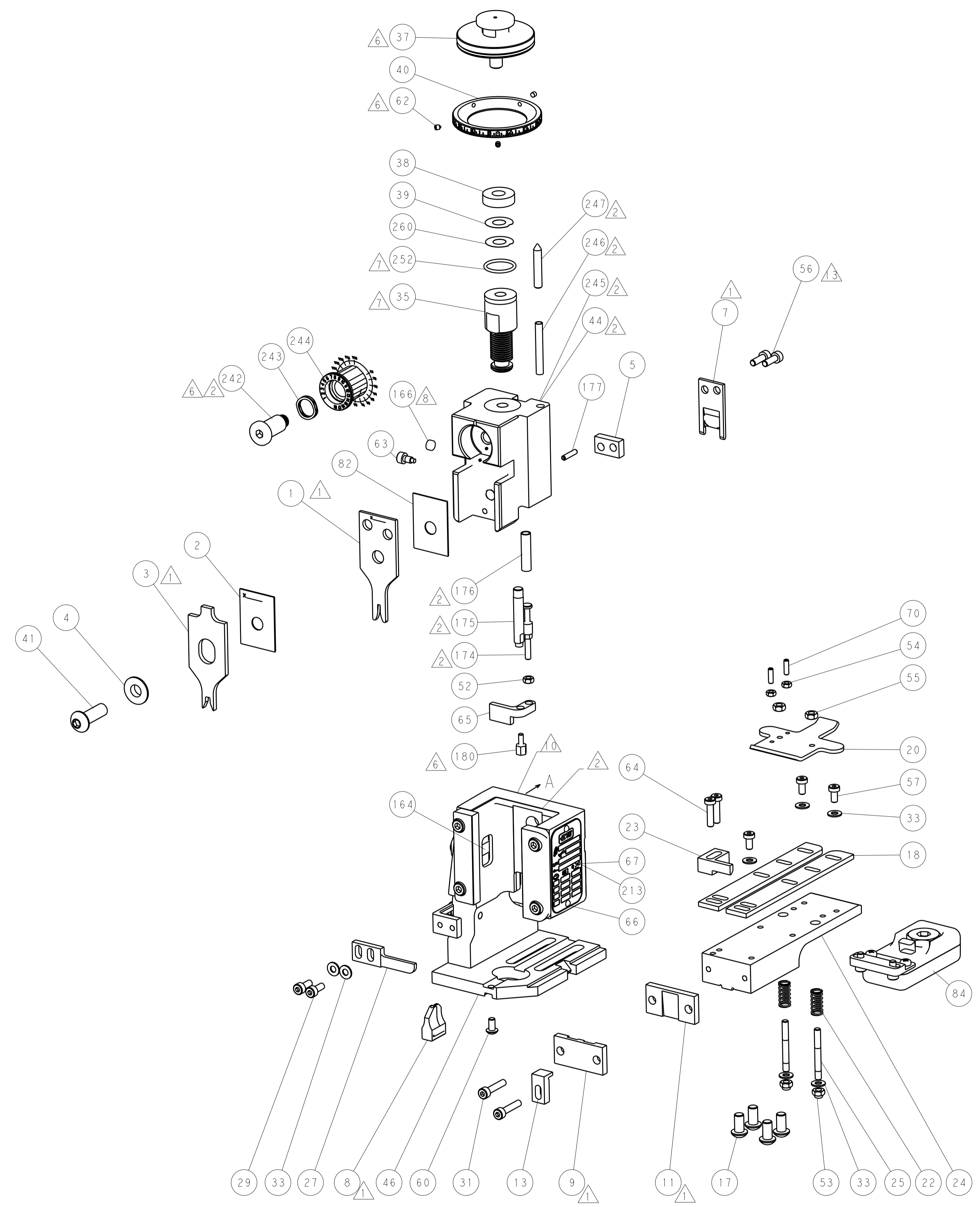
REV	DATE	BY	APPV	DESCRIPTION	ITEM NO		
-	-	-	-	1	2079988-1	BUSHING, LCH5-12, MISUMI	249
-	-	-	-	1	2119641-1	FEED CAM, AIR FEED	248
-	1	-	-	1	2119798-1	DETENT PIN	247
-	1	-	-	1	1-22279-3	SPRING, COMPRESSION	246
-	-	1	-	-	2119759-1	RAM, AMP STYLE, END FEED, NON-ADJUST	245
-	1	1	-	1	2119082-3	CAM, SNAIL, INSULATION ADJUSTMENT	244
-	1	1	-	1	2079764-1	WASHER, WAVE SPRING, CREST-TO-CREST	243
-	1	1	-	1	2119083-1	RETAINER, INSULATION DIAL	242
-	-	2	-	-	2168400-7	SHCS, LOW HEAD, RoHS, M5 X 10	240
-	-	-	-	1	2063440-1	AIR FEED MODULE	238
-	-	1	-	-	2119740-2	TAG, IDENTIFICATION	213
-	-	REF	-	-	1901697-1	FEED FINGER ASSEMBLY, EF	183
-	1	1	-	1	1752354-8	STANDOFF, HOLD-DOWN	180
-	1	1	-	1	6-993111-6	PIN, SLOTTED SPRING 3.0 X 14.0	177
-	1	1	-	1	8-22280-7	SPRING, COMPRESSION	176
-	1	1	-	1	1752353-2	GUIDE PIN, HOLDDOWN	175
-	1	1	-	1	1901680-2	GUIDE PIN, HOLDDOWN	174
-	-	-	-	2	21045-3	RING, RETAIN, EXTERN, 3/16 CRESCENT	172
-	1	1	-	1	994969-1	MAGNET, RARE EARTH HIGH ENERGY	166
-	REF	REF	-	-	994970-2	COUNTER, MAGNETIC	164
-	-	-	-	1	240638-1	SPRING, FEED FINGER	163
-	-	-	-	1	3-23627-7	PIN, RETAIN, GRVD, 3/16 X .854	137
-	-	REF	-	-	SEE NOTE 4	MEMORY CHIP, PROGRAMMED	135
-	-	1	-	-	1633743-1	SERVO FEED LATCH ASM	133
-	1	1	-	1	2119955-2	ASSY, LUBRICATOR, END FEED	84
-	1	1	-	1	455888-5	SPACER, CRIMPER	82
-	1	1	-	1	2119956-2	DOCUMENTATION PACKAGE	71
-	2	2	-	2	2-18032-2	SCR, SET, FLT POINT M3 X 10.0	70
-	1	-	-	1	2119740-1	TAG, IDENTIFICATION	67
-	2	2	-	2	2168078-1	SCREW, DRIVE, RH, RoHS, 2 x .188	66
-	1	1	-	1	1901681-1	HOLDDOWN, TERMINAL	65
-	2	2	-	2	2168400-8	SHCS, LOW HEAD, RoHS, M4 X 16	64
-	1	-	-	1	2119793-1	LIMITER, ADJUSTMENT BOLT	63
-	3	-	-	3	992763-5	SCR, SET, SOC, CONE POINT, M3 X 4.0	62
-	1	1	-	1	2079383-4	SCR, BHSC, RoHS (M4 X 8)	60
-	3	3	-	3	2168400-4	SHCS, LOW HEAD, RoHS, M4 X 8	57
-	2	2	-	2	2168083-3	SCR, SKT HD CAP, RoHS, M4 X 12.0	56
-	2	2	-	2	5018030-2	NUT, HEX, REG, RoHS, M4	55
-	2	2	-	2	5018030-1	NUT, HEX, REG, RoHS, M3	54
-	2	2	-	2	986965-8	NUT, LOCK, HEX, TORQUE (M4)	53
-	1	1	-	1	1-5018030-0	NUT, HEX, REG, RoHS, M3.5	52
-	-	-	-	1	2119792-2	PAWL, EF, AIR	51
-	-	-	-	1	18023-9	SCR, SKT HD CAP M4 X 6.0	49
-	1	1	-	1	2119655-5	APPLICATOR BASIC ASSEMBLY, EF	46
-	1	-	-	1	2119369-1	RAM, AMP STYLE, END FEED	44
-	1	1	-	1	2079383-7	SCR, BHSC, RoHS (M8 X 25)	41
-	1	-	-	1	2119645-1	DISC, NUMBERED FA WIRE ADJUSTMENT	40
-	1	-	-	1	2119957-1	APPLICATOR SHIM PACK	39
-	1	1	-	1	2119644-1	RAM WASHER, PRECISION	38
-	1	1	-	1	2119085-1	FA HEAD, ATLANTIC STYLE	37
-	1	-	-	1	2119092-1	BOLT, ADJUSTMENT	35
-	7	7	-	7	1-18028-2	WASHER, FLAT, REG M4	33
-	2	2	-	2	2168083-9	SCR, SKT HD CAP, RoHS, M4 X 20	31
-	2	2	-	2	1-2168083-0	SCR, SKT HD CAP, RoHS, M4 X 10	29
-	1	1	-	1	240639-1	STRIPPER (MACHINING)	27
-	2	2	-	2	1320906-1	STUD, THREADED	25
-	1	1	-	1	1752371-5	PLATE, STRIP GUIDE	24
-	1	1	-	1	240825-1	PLATE, STRIP HOLD DOWN	23
-	2	2	-	2	2-22281-3	SPRING, COMPRESSION	22
-	1	1	-	1	1752373-4	DRAG	20
-	2	2	-	2	1901259-6	GUIDE, LOWER STRIP	18
-	4	4	-	4	1-2079383-1	SCR, BHSC, RoHS (M6 X 12)	17
-	1	1	-	1	1752360-1	SPACER, HOLD-DOWN	13
-	1	1	-	1	240644-1	PLATE, REAR SHEAR	11
-	-	-	-	-	-	-	10
-	1	1	-	1	690482-6	PLATE, FRONT SHEAR	9
1	1	1	-	1	1333214-3	ANVIL, EF .062	8
-	1	1	-	1	2217206-4	BLADE, SLUG	7
-	1	1	-	1	3-240641-5	SPACER	5
-	1	1	-	1	238009-1	BLOCK, FL CRIMPER SPACER	4
1	1	1	-	1	1803017-9	CRIMPER, INSULATION F	3
-	1	1	-	1	455888-6	SPACER, CRIMPER	2
1	1	1	-	1	3-456403-4	CRIMPER, WIRE PREMIUM	1

DIMENSIONS: mm		TOLERANCES UNLESS OTHERWISE SPECIFIED:		DWG: H. HUANG 07FEB2012		CHK: S. XI 07FEB2012		NAME: Ocean End Feed Applicator	
0 PLC ±.5		1 PLC ±0.13		APVD: S. XI 07FEB2012		PRODUCT SPEC: -		SIZE: A1	
5 PLC ±0.013		4 PLC ±0.0001		APPLICATION SPEC: -		WEIGHT: -		CAGE CODE: 00779	
MATERIAL: -		FINISH: -		RESTRICTED TO: -		SCALE: 1:1		SHEET 1 OF 4	

LOC		DIST		REVISIONS			
A	66	P	LTM	DESCRIPTION	DATE	OWN	APVD
		-		SEE SHEET 1			

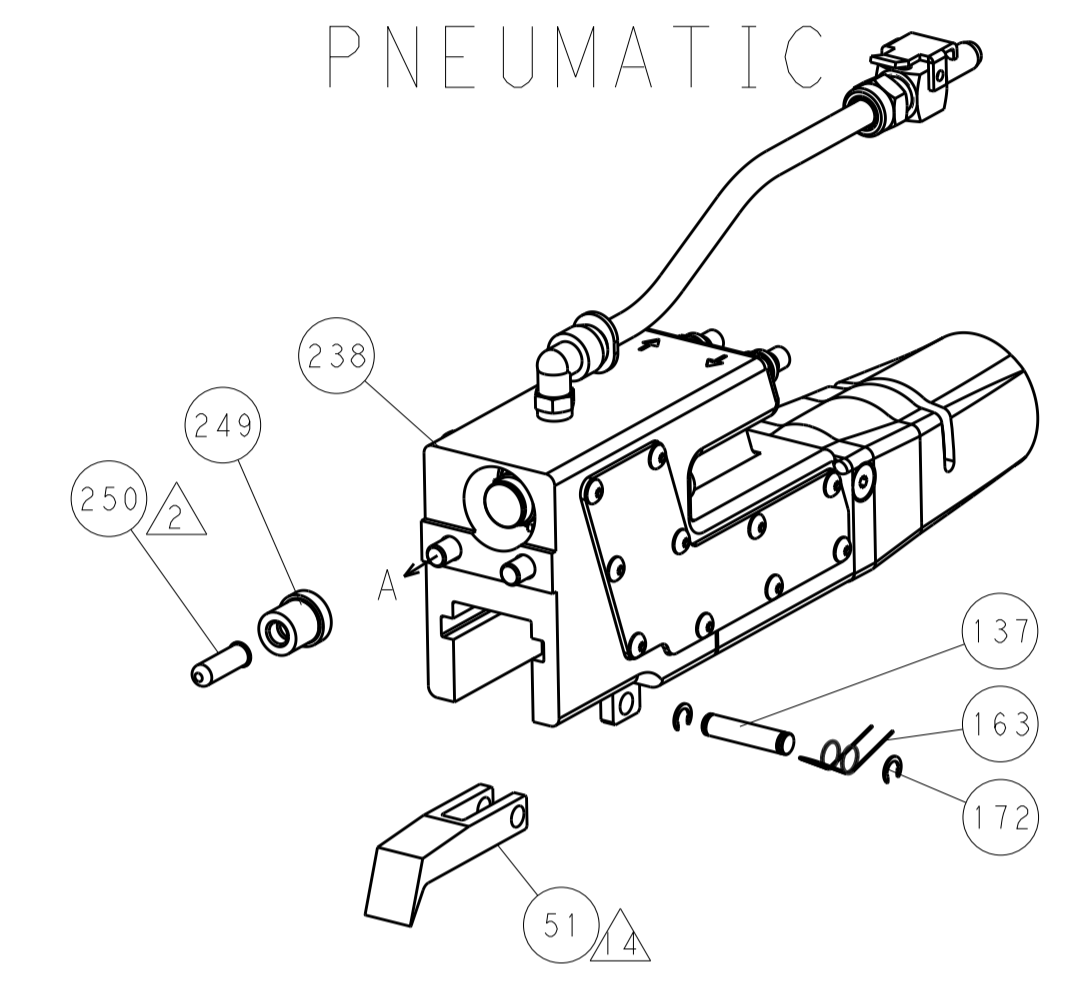


HOLDDOWN SET-UP

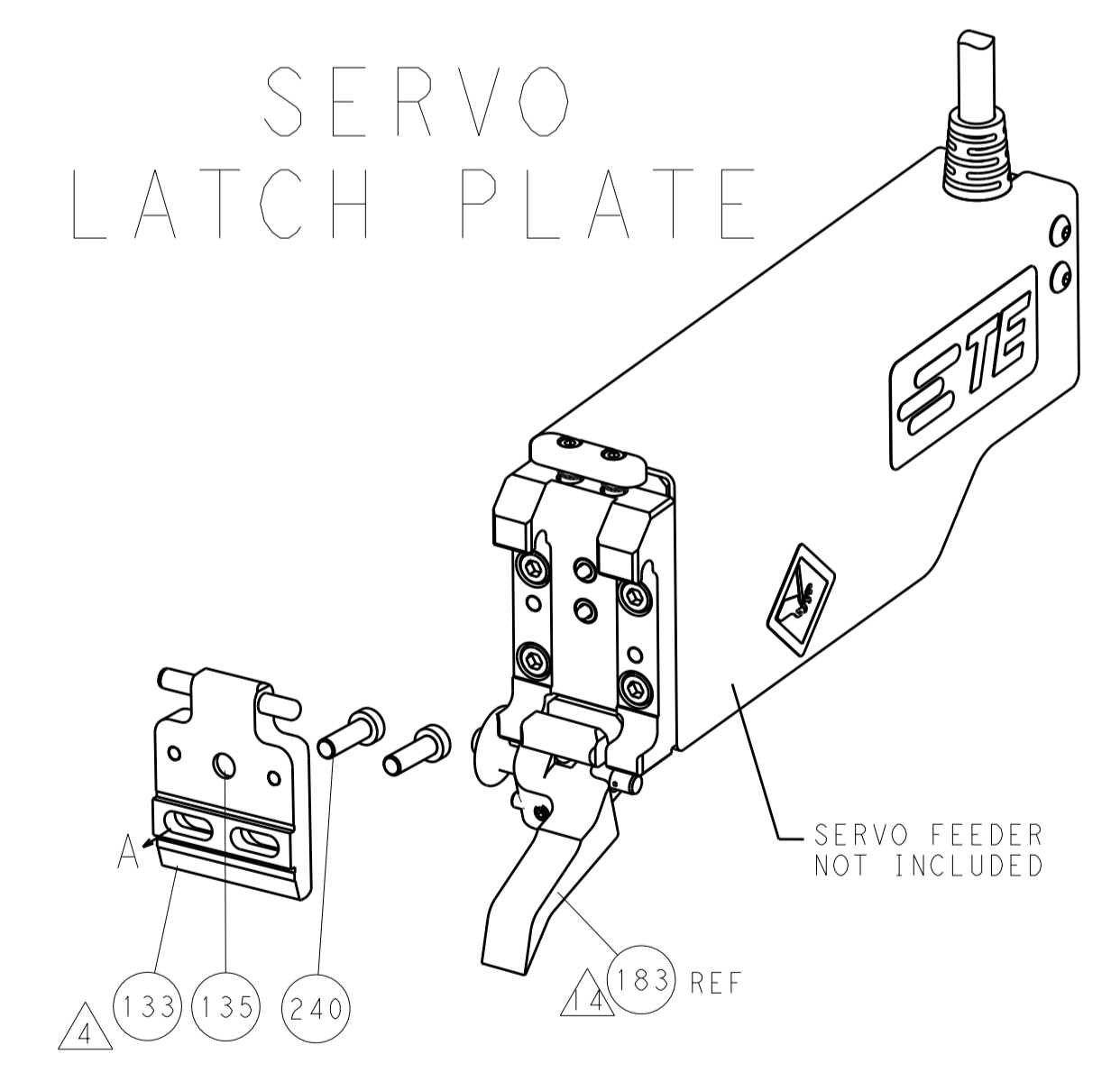


FEED TYPE

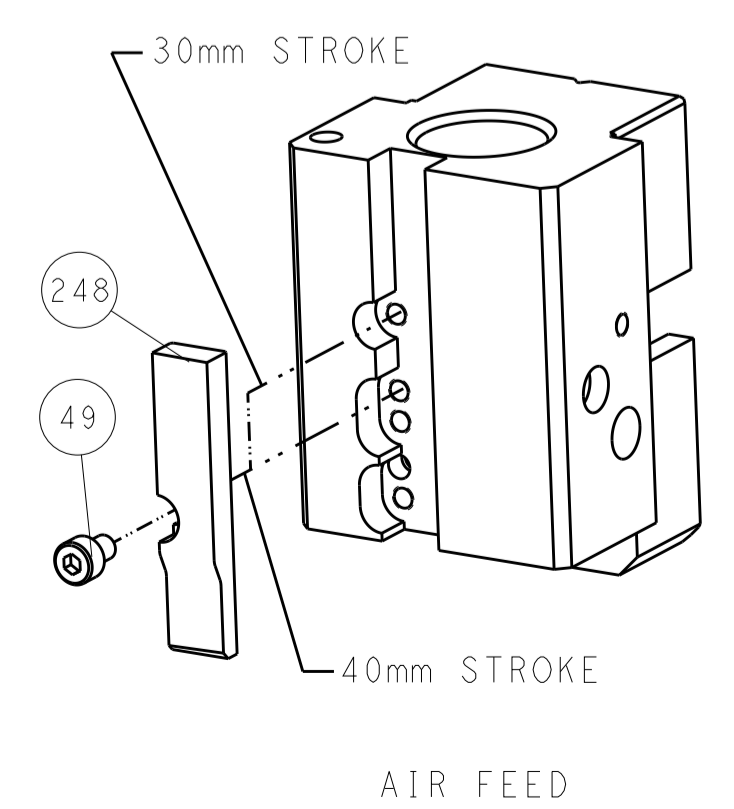
PNEUMATIC



SERVO LATCH PLATE



CAM POSITION



ATLANTIC VERSION
Shown on sheets 1 of 4 & 2 of 4
(Pacific version shown on sheets 3 of 4 & 4 of 4)

<small>THIS DRAWING IS UNPUBLISHED. RELEASED FOR PUBLICATION. COPYRIGHT 20 BY TYCO ELECTRONICS CORPORATION. ALL RIGHTS RESERVED.</small>		DWN: R. HUANG 07FEB2012 CHK: S. XI 07FEB2012 APVD: S. XI 07FEB2012	TE Connectivity Harrisburg, PA 17105-3608
DIMENSIONS: mm 		TOLERANCES UNLESS OTHERWISE SPECIFIED: 0 PLC ±0.5 1 PLC ±0.13 3 PLC ±0.013 4 PLC ±0.0001 ANGLES ±0.0001	NAME: Ocean End Feed Applicator SIZE: A1 CAGE CODE: 00779 DRAWING NO: C=2150047 RESTRICTED TO: -
MATERIAL: - FINISH: -		WEIGHT: - Customer Accessible Production Drawing	SCALE: 1:1 SHEET: 2 of 4 REV: A

PACIFIC VERSION TERMINATOR INTERFACE ADAPTER	PART NUMBER	REVISION	DESCRIPTION	FEED TYPE	APPLICATOR STYLE CONVERSION CHART						
					CONVERT TO	PART NUMBERS REQUIRED					
	2-2150047-2	A	FINE CRIMP HEIGHT ADJUST	PNEUMATIC	-	-	-	-	-	-	
	2-2150047-5	A	FINE CRIMP HEIGHT ADJUST	SERVO LATCH PLATE	SERVO LATCH PLATE	2119951-1	1901697-1	8-2150047-5	-	-	2168400-7 (QUANTITY 2)
					SMART APPLICATOR	2161326-1	-	8-2150047-4	-	-	-
	2-2150047-7	A	FINE CRIMP HEIGHT ADJUST	NONE	-	-	-	-	-	-	
7-2150047-7	A	CRIMP TOOLING KIT	-	-	-	-	-	-	-	-	

APPLICATOR DATA		
CRIMP	SIZE	TYPE
WIRE	1.57 mm [.062]	F
INSUL	3.56 mm [.140]	F
APPL INSTRUCTIONS 408-10390		

TERMINAL DATA: TE TERMINAL		TE CRIMP SPECIFICATION
TERMINAL NAME: 187 SERIES POSITIVE LOCK EX		
WIRE STRIP LENGTH 3.50-4.50 mm [.138-.177 IN]		INSULATION DIAMETER RANGE Ø1.30-3.60 mm [.051-.142 IN]
TERMINAL APPLICATION SPECIFICATION (A)114-5114	-	-
(B)114-5125	-	-
TERMINALS APPLIED		
TE TERMINAL (A) 173722-1	TE TERMINAL (B) 175032-1	TE TERMINAL

WIRE SIZE	CRIMP HEIGHT mm [INCH]	CRIMP HEIGHT REFERENCE SETTING
20 AWG OR 0.50mm2	1.04 +/- 0.05 [.041 +/- .002]	7.0
22 AWG OR 0.30mm2	1.01 +/- 0.05 [.040 +/- .002]	7.2
24 AWG OR 0.20mm2	0.94 +/- 0.05 [.037 +/- .002]	8.0
26 AWG OR 0.15mm2	0.90 +/- 0.05 [.035 +/- .002]	8.5

- RECOMMENDED SPARE PARTS
- GREASE BEARING SURFACES LIGHTLY
- 3. LUBRICATE DAILY PER THE APPLICATOR INSTRUCTION SHEET SUPPLIED WITH THE APPLICATOR.
- APPLICATOR SPECIFIC DATA TO BE ENTERED INTO BLANK MEMORY CHIP AT ASSEMBLY. SEE BELOW FOR PART NUMBER:
 PNEUMATIC FEED WITH "SMART APPLICATOR" CONVERSION: 8-2150047-4
 SERVO FEED WITH "FINE CRIMP HEIGHT ADJUST": 8-2150047-5
- 5. ADJUSTMENT OF THE STRIPPER MAY BE REQUIRED WHEN MOVING THE APPLICATOR BETWEEN BENCH AND LEADMAKER APPLICATIONS.
- APPLY PART NUMBER 1-23419-5 LOCTITE TO THREADS OF ITEMS 62,180
 APPLY PART NUMBER 2-23419-6 LOCTITE TO THREADS OF ITEMS 242.
- GREASE THREADS, GROOVE AND O-RING ON ITEMS 139 & 153.
- MAGNET, ITEM 166 MUST BE ORIENTED CORRECTLY IN ORDER TO PROPERLY ACTUATE THE COUNTER.
- CRIMP HEIGHT REFERENCE SETTING WAS THE SETTING USED WHEN THE APPLICATOR WAS QUALIFIED AT THE FACTORY. ADJUSTMENT MAY BE NECESSARY WHEN RUNNING APPLICATOR IN THE FIELD.
- TERMINAL PITCH NOT COMPATIBLE WITH MECHANICAL FEED.
- TERMINAL LUBRICANT IS RECOMMENDED FOR 175032.
- CUT TO LENGTH AT ASSEMBLY.
- LOCATE THE FEED FINGER AT THE END OF THE INSULATION BARREL TO PROPERLY FEED THE TERMINAL.

***WARNING**
 ON INSTALLATION, SET WIRE DISC, ITEM 40 TO LARGEST WIRE SIZE SETTING. USE OF SETTINGS BELOW MINIMUM REQUIRED CRIMP HEIGHT SETTING WILL CAUSE DAMAGE TO CRIMP TOOLING.

ITEM NO	DESCRIPTION	ITEM NO
- 1 1 1 1	2119782-1 FINE ADJUST HEAD ASM, PACIFIC STYLE	251
-77-27-25-22	PART NO DESCRIPTION	ITEM NO

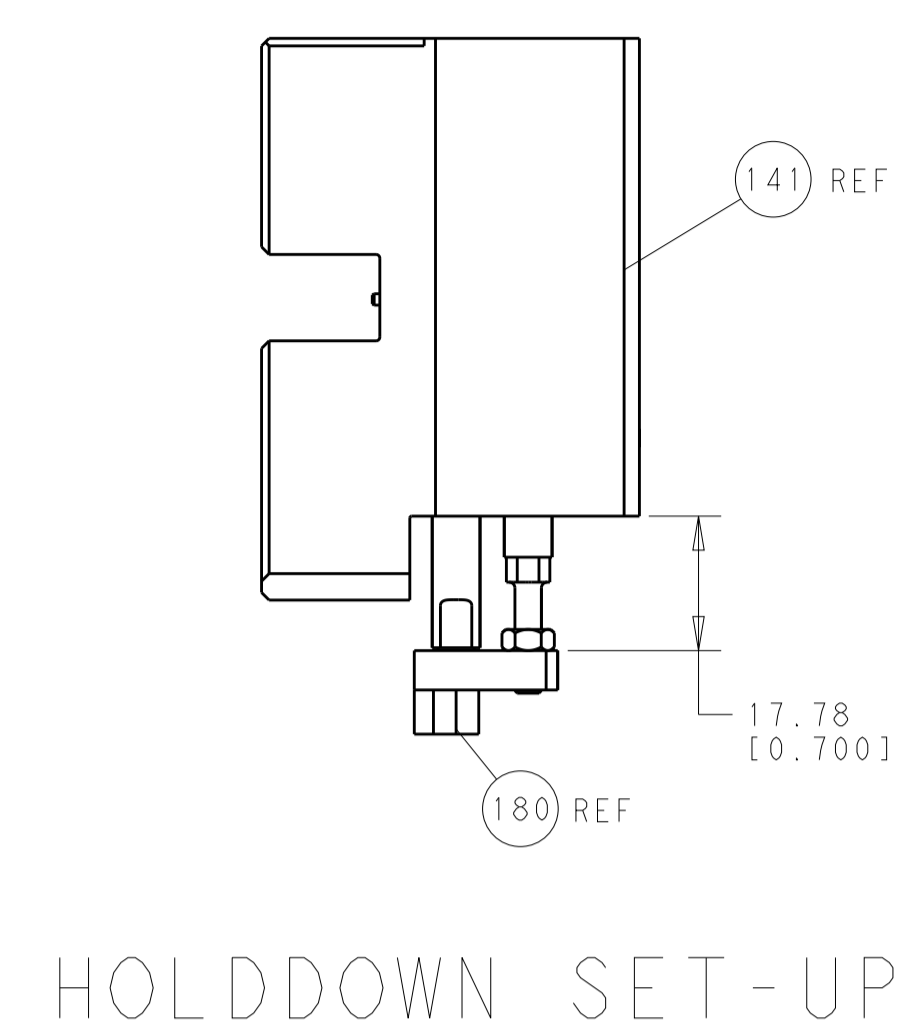
PACIFIC VERSION
 Shown on sheets 3 of 4 & 4 of 4
 (Atlantic version shown on sheets 1 of 4 & 2 of 4)

SET UP GAUGE	LOC	DIST	REVISIONS			
2119599-2	A	66	REV	DATE	BY	APPV
-	-	-	1	SEE SHEET 1	-	-

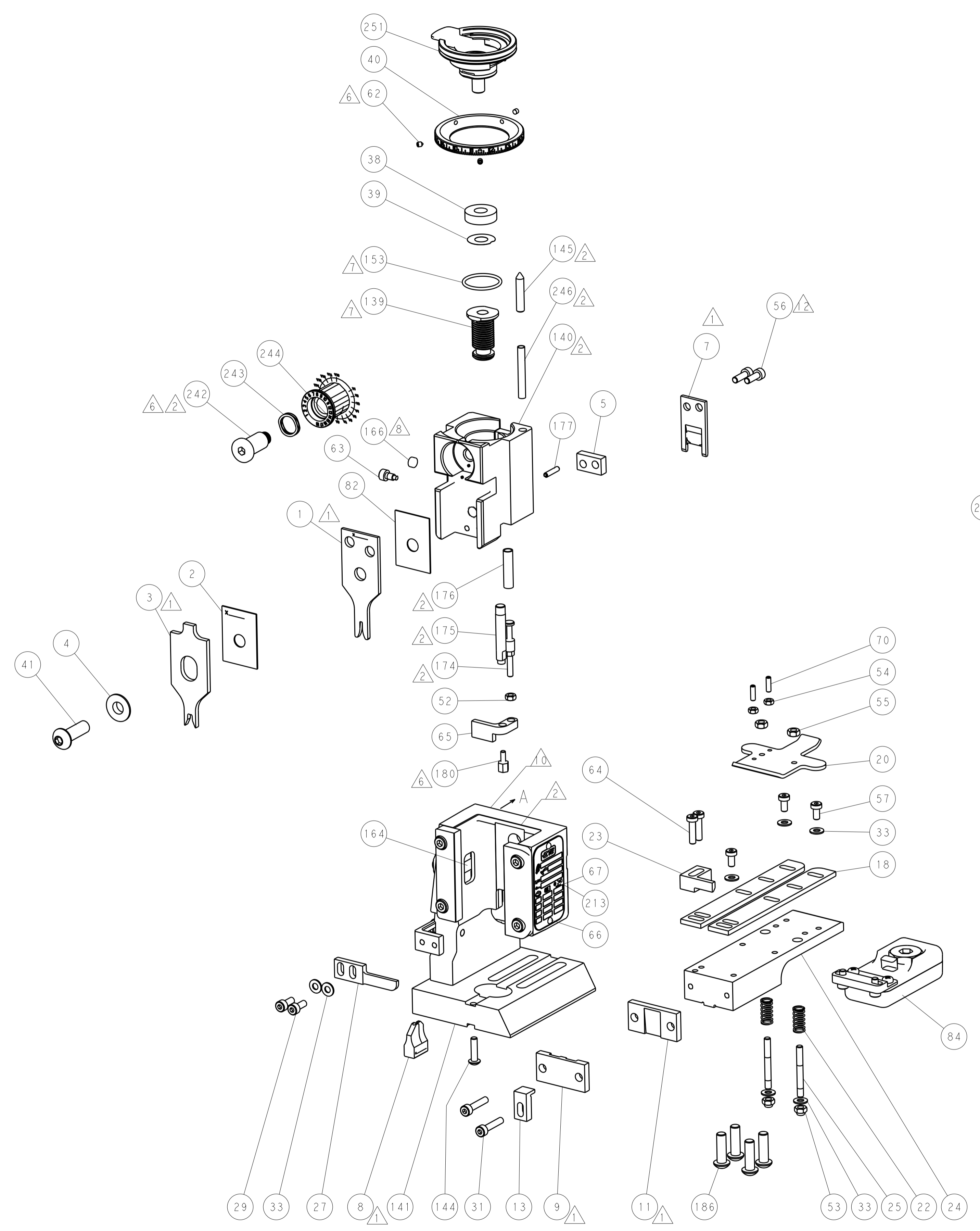
REV	DATE	BY	APPV	DESCRIPTION	DATE	BY	APPV
-	-	-	1	2119640-1	PUSH ROD, AIR FEED	-	250
-	-	-	1	2079988-1	BUSHING, LCH5-12, MISUMI	-	249
-	1	1	1	1-22279-3	SPRING, COMPRESSION	-	246
-	1	1	1	2119082-3	CAM, SNAIL, INSULATION ADJUSTMENT	-	244
-	1	1	1	2079764-1	WASHER, WAVE SPRING, CREST-TO-CREST	-	243
	1	1	1	2119083-1	RETAINER, INSULATION DIAL	-	242
-	-	2	-	2168400-7	SHCS, LOW HEAD, RoHS, M5 X 10	-	240
-	-	-	1	2063440-1	AIR FEED MODULE	-	238
-	-	1	-	2119740-2	TAG, IDENTIFICATION	-	213
	4	4	4	2079383-9	SCR, BHSC, RoHS (M6 X 20)	-	186
	-	-	REF	1901697-1	FEED FINGER ASSEMBLY, EF	-	183
	1	1	1	1752354-8	STANDOFF, HOLD-DOWN	-	180
-	1	1	1	6-993111-6	PIN, SLOTTED SPRING 3.0 X 14.0	-	177
-	1	1	1	8-22280-7	SPRING, COMPRESSION	-	176
-	1	1	1	1752353-2	GUIDE PIN, HOLDDOWN	-	175
-	1	1	1	1901680-2	GUIDE PIN, HOLDDOWN	-	174
-	-	-	2	21045-3	RING, RETAIN, EXTERN, 3/16 CRESCENT	-	172
-	1	1	1	994969-1	MAGNET, RARE EARTH HIGH ENERGY	-	166
-	REF	REF	REF	994970-2	COUNTER, MAGNETIC	-	164
-	-	-	1	240638-1	SPRING, FEED FINGER	-	163
-	1	1	1	8-21084-1	O-RING, .801 ID, .070 DIA. MAT.	-	153
-	-	-	1	2119641-2	FEED CAM, AIR FEED	-	152
-	1	1	1	2119798-2	DETENT PIN	-	145
-	1	1	1	2079383-8	SCR, BHSC, RoHS (M4 X 16)	-	144
-	1	1	1	2119655-6	APPLICATOR BASIC ASSEMBLY, EF	-	141
-	1	1	1	2119651-1	RAM, ASIAN STYLE, END FEED	-	140
-	1	1	1	2119092-2	BOLT, ADJUSTMENT	-	139
-	-	-	1	3-23627-7	PIN, RETAIN, GRVD, 3/16 X .854	-	137
-	-	REF	-	SEE NOTE 4	MEMORY CHIP, PROGRAMMED	-	135
-	-	1	-	1633743-1	SERVO FEED LATCH ASM	-	133
-	1	1	1	2119955-2	ASSY, LUBRICATOR, END FEED	-	84
-	1	1	1	455888-5	SPACER, CRIMPER	-	82
-	1	1	1	2119956-2	DOCUMENTATION PACKAGE	-	71
-	2	2	2	2-18032-2	SCR, SET, FLT POINT M3 X 10.0	-	70
-	1	-	1	2119740-1	TAG, IDENTIFICATION	-	67
-	2	2	2	2168078-1	SCREW, DRIVE, RH, RoHS, 2 x .188	-	66
-	1	1	1	1901681-1	HOLDDOWN, TERMINAL	-	65
-	2	2	2	2168400-8	SHCS, LOW HEAD, RoHS, M4 X 16	-	64
-	1	1	1	2119793-1	LIMITER, ADJUSTMENT BOLT	-	63
	3	3	3	992763-5	SCR, SET, SOC, CONE POINT, M3 X 4.0	-	62
	3	3	3	2168400-4	SHCS, LOW HEAD, RoHS, M4 X 8	-	57
	2	2	2	2168083-3	SCR, SKT HD CAP, RoHS, M4 X 12.0	-	56
-	2	2	2	5018030-2	NUT, HEX, REG, RoHS, M4	-	55
-	2	2	2	5018030-1	NUT, HEX, REG, RoHS, M3	-	54
-	2	2	2	986965-8	NUT, LOCK, HEX, TORQUE (M4)	-	53
	1	1	1	1-5018030-0	NUT, HEX, REG, RoHS, M3.5	-	52
-	-	-	1	2119792-2	PAWL, EF, AIR	-	51
-	-	-	1	18023-9	SCR, SKT HD CAP M4 X 6.0	-	49
-	1	1	1	2079383-7	SCR, BHSC, RoHS (M8 X 25)	-	41
-	1	1	1	2119645-1	DISC, NUMBERED FA WIRE ADJUSTMENT	-	40
-	1	1	1	2119957-1	APPLICATOR SHIM PACK	-	39
-	1	1	1	2119644-1	RAM WASHER, PRECISION	-	38
-	7	7	7	1-18028-2	WASHER, FLAT, REG M4	-	33
-	2	2	2	2168083-9	SCR, SKT HD CAP, RoHS, M4 X 20	-	31
-	2	2	2	1-2168083-0	SCR, SKT HD CAP, RoHS, M4 X 10	-	29
-	1	1	1	240639-1	STRIPPER (MACHINING)	-	27
-	2	2	2	1320906-1	STUD, THREADED	-	25
-	1	1	1	1752371-5	PLATE, STRIP GUIDE	-	24
-	1	1	1	240825-1	PLATE, STRIP HOLD DOWN	-	23
-	2	2	2	2-22281-3	SPRING, COMPRESSION	-	22
-	1	1	1	1752373-4	DRAG	-	20
-	2	2	2	1901259-6	GUIDE, LOWER STRIP	-	18
-	1	1	1	1752360-1	SPACER, HOLD-DOWN	-	13
	1	1	1	240644-1	PLATE, REAR SHEAR	-	11
-	-	-	-	-	-	-	10
	1	1	1	690482-6	PLATE, FRONT SHEAR	-	9
	1	1	1	1333214-3	ANVIL, EF .062	-	8
	1	1	1	2217206-4	BLADE, SLUG	-	7
-	1	1	1	3-240641-5	SPACER	-	5
-	1	1	1	238009-1	BLOCK, FL CRIMPER SPACER	-	4
	1	1	1	1803017-9	CRIMPER, INSULATION F	-	3
-	1	1	1	455888-6	SPACER, CRIMPER	-	2
	1	1	1	3-456403-4	CRIMPER, WIRE PREMIUM	-	1

DIMENSIONS:		TOLERANCES UNLESS OTHERWISE SPECIFIED:		DWG		NAME	
mm	0 PLC ±.5	1 PLC ±.5	2 PLC ±.5	3 PLC ±.5	4 PLC ±.5	5 PLC ±.5	6 PLC ±.5
	ANGLES ±.0001						
MATERIAL	FINISH	WEIGHT	SCALE	DATE	REV	BY	APPV
			1:1	07FEB2012	3	CHU	HWANG
Customer Accessible Production Drawing				SHEET 3 OF 4			

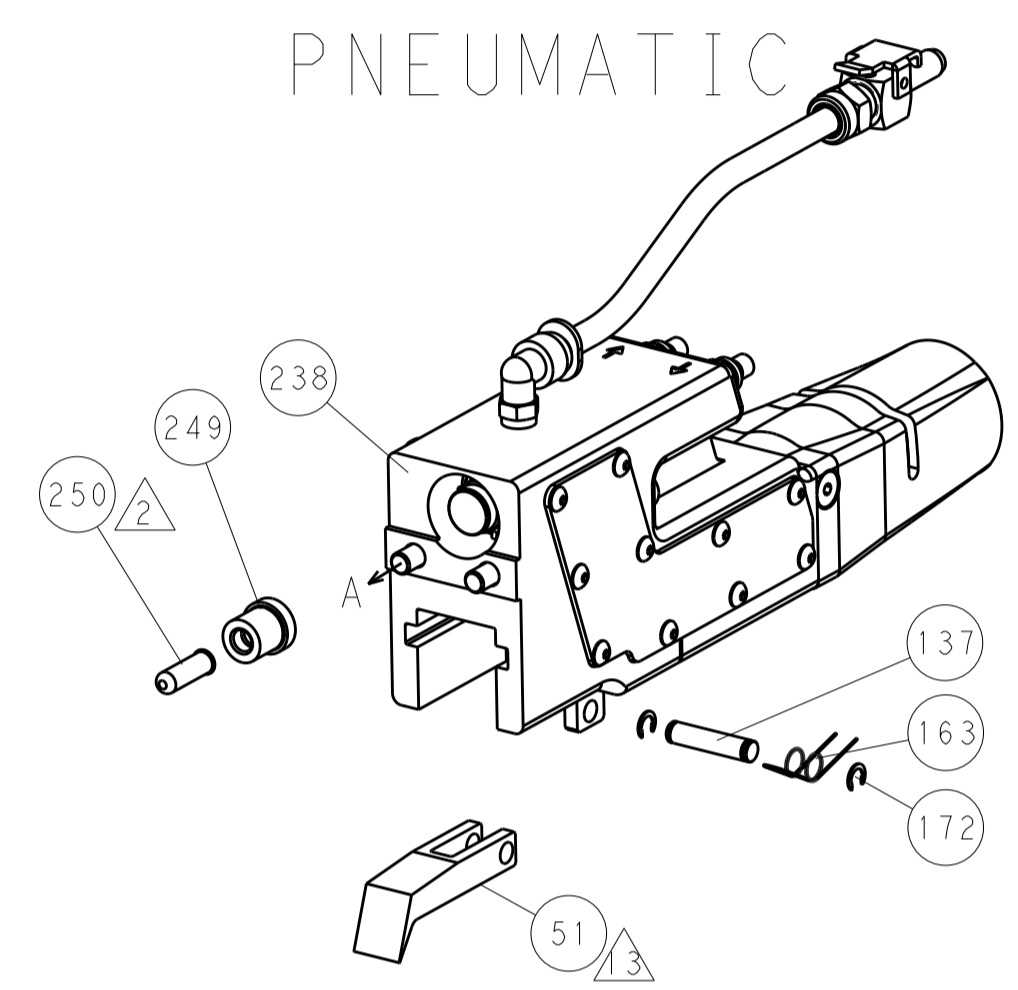
LOC		DIST		REVISIONS			
A		66		REV	DATE	BY	APPD
				1	SEE SHEET 1		



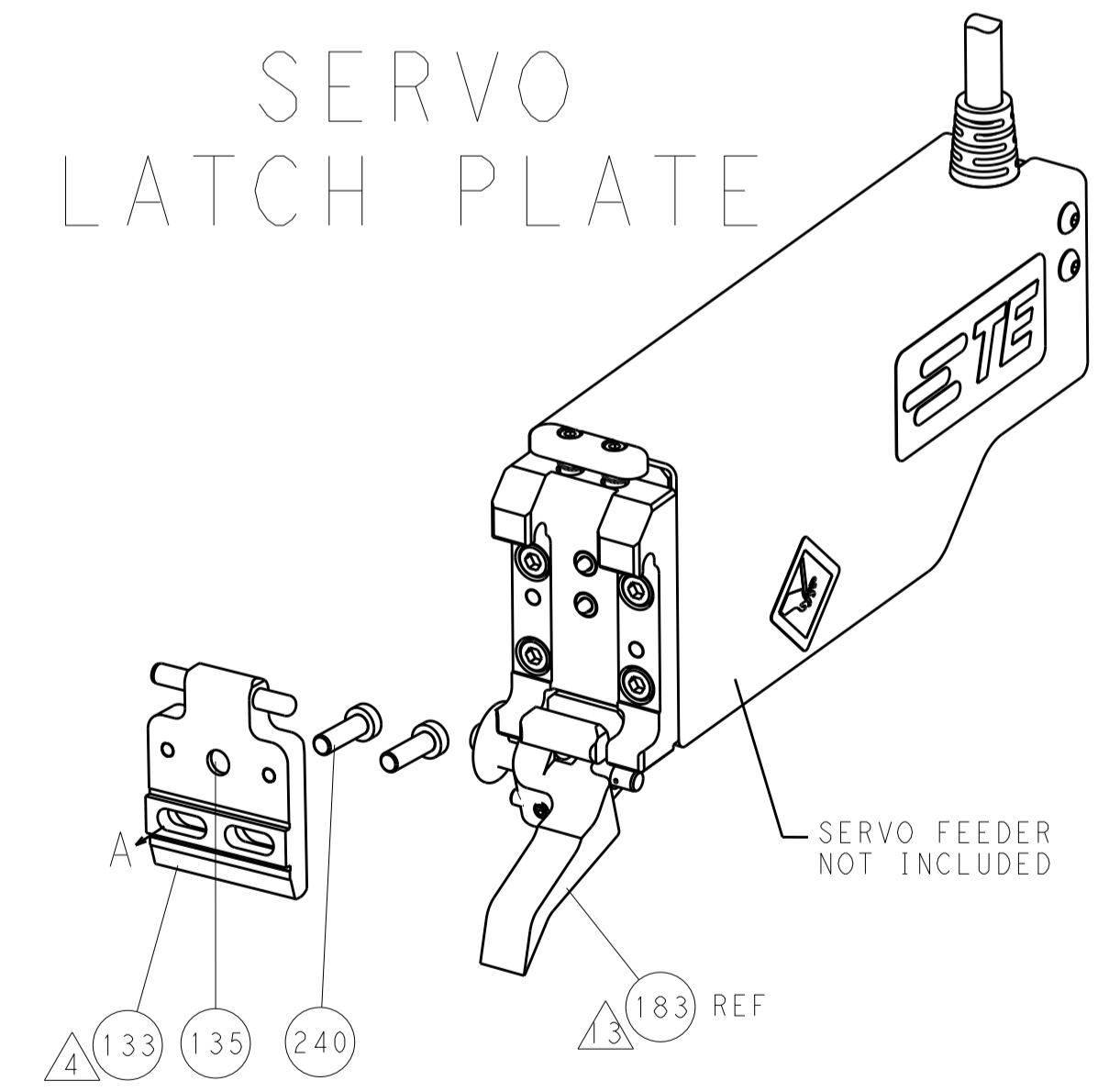
FEED TYPE



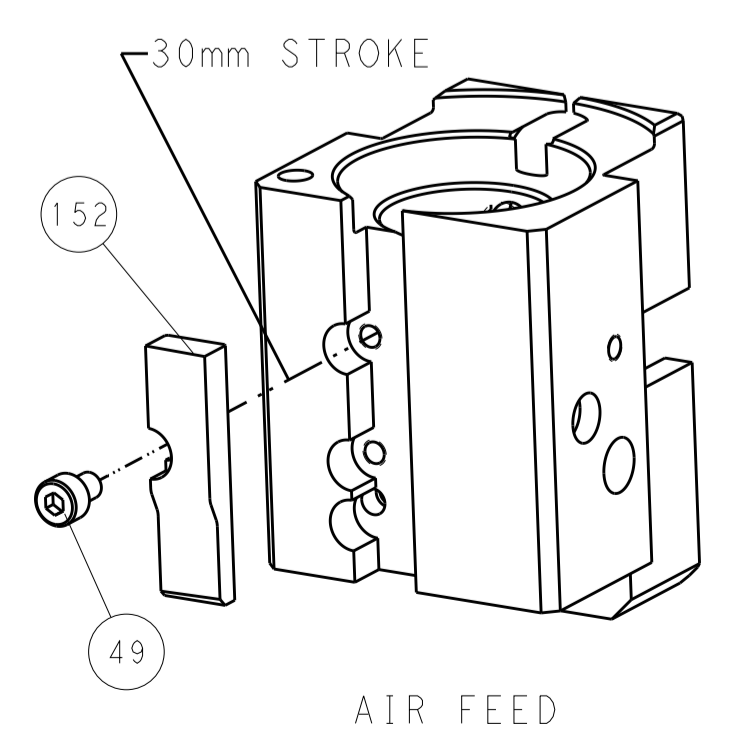
PNEUMATIC



SERVO LATCH PLATE



CAM POSITION



PACIFIC VERSION
 Shown on sheets 3 of 4 & 4 of 4
 (Atlantic version shown on sheets 1 of 4 & 2 of 4)

DIMENSIONS:		TOLERANCES UNLESS OTHERWISE SPECIFIED:		DWN R. HUANG 07FEB2012		STE TE Connectivity Harrisburg, PA 17105-3608	
mm	0 PLC ±0.5	1 PLC ±0.5	2 PLC ±0.13	3 PLC ±0.013	4 PLC ±0.0001	NAME	Ocean End Feed Applicator
MATERIAL:		FINISH:		APVD	S. XI 07FEB2012	SIZE	CAGE CODE DRAWING NO
				WEIGHT	A 00779	SCALE	1:1 SHEET 4 OF 4 REV A
				Customer Accessible Production Drawing			