

78M05

To-252/251 Plastic-Encapsulate Transistors

78M05 Three-terminal positive voltage regulator

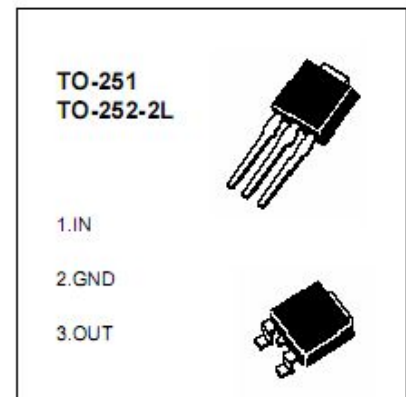
FEATURES:

Maximum Output current ICM: 1A

Output voltage VO: 5V

Continuous total dissipation

PD: 1.25 W(Ta=25°C)



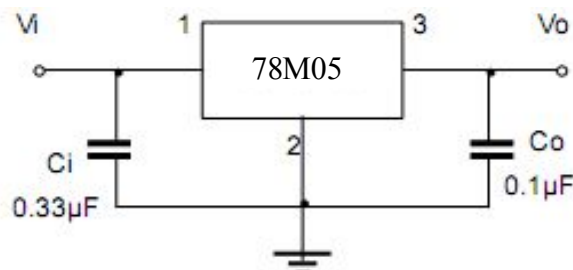
ABSOLUTE MAXIMUM RATINGS(Operating temperature unless otherwise specified)

Symbol (符号)	Parameter (参数名称)	Value (额定值)	Units (单位)
V _i	Input Voltage	35	V
T _{OPR}	Operating junction Temperature Range	0~+125	°C
T _{stG}	Storage Temperature Range	-55~+150	°C

ELECTRICAL CHARACTERISTICS (T_{amb}=25°C unless otherwise specified)

Parameter	Symbol	Test conditions	MIN	TYP	MAX	UNIT
Output voltage	V _o	25°C	4.8	5.0	5.2	V
		7V ≤ V _i ≤ 20V, I _o = 5mA ~ 350mA P _o ≤ 15W	0-125°C	4.75	5.0	5.25
Load Regulation	ΔV _o	I _o = 1mA ~ 0.5A	25°C	15	100	mV
		I _o = 5mA ~ 200mA	25°C	5	100	mV
Line regulation	ΔV _o	7V ≤ V _i ≤ 25V I _o = 200mA		3	100	mV
		8V ≤ V _i ≤ 25V I _o = 200mA	25°C	1	50	mV
Quiescent Current	I _q	25°C		4.2	6	mA
Quiescent Current Change	ΔI _q	8V ≤ V _i ≤ 25V I _o = 200mA	0-125°C		0.8	mA
	ΔI _q	5mA ≤ I _o ≤ 350mA	0-125°C		0.5	mA
Output Noise Voltage	V _N	10Hz ≤ f ≤ 100KHz	25°C	40	200	uV
Ripple Rejection	RR	8V ≤ V _i ≤ 18V, f = 120Hz I _o = 300mA	0-125°C	62	80	dB
Dropout Voltage	V _d	I _o = 350mA	25°C	2	2.5	V

TYPICAL APPLICATION



Typical Characteristics

78M05

