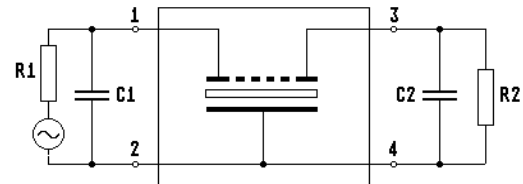
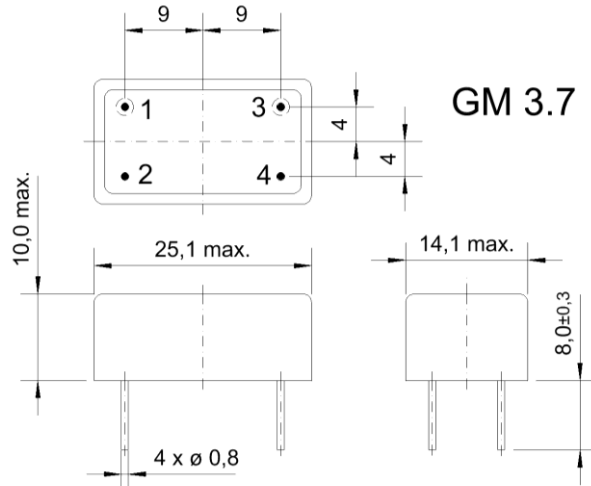


Specification for monolithic crystal filter:

MQF 25.0-0600/03

1. General

1.1. Package:



- | | |
|-----------------------------------|------------------|
| 1.2. Type name: | MQF 25.0-0600/03 |
| 1.3. Number of poles: | 6 |
| 1.4. Operating temperature range: | -20°C to +70°C |
| 1.5. Storage temperature range: | -45°C to +85°C |

2. Electric values

- | | |
|---|---------------------------------|
| 2.1. Nominal centre frequency f_0 : | 25.0 MHz |
| 2.2. Pass band | |
| 2.2.1. Bandwidth between 3 dB - frequencies: | $> f_0 \pm 3.0$ kHz |
| 2.2.2. Ripple: | < 2.0 dB at $f_0 \pm 2.0$ kHz |
| 2.2.3. Insertion loss:
(measured on smallest attenuation in pass band) | < 3.5 dB |
| 2.3. Stop band | |
| 2.3.1. $f_0 \pm 10$ kHz | > 40 dB |
| 2.3.2. $f_0 \pm 12.5$ kHz | > 60 dB |
| 2.3.3. Alternate Attenuation | > 60 dB |
| 2.4.1. Nominal input power level | 0 dBm |
| 2.4.2. Maximal input power level | +15 dBm |
| 2.5. Terminating impedance R/C (input and output): | $50 \Omega // 0$ pF |

3. Marking:



- | | |
|----------------------------|---|
| 4. Environment conditions: | Corresponding to Vectron standard CF001 |
|----------------------------|---|