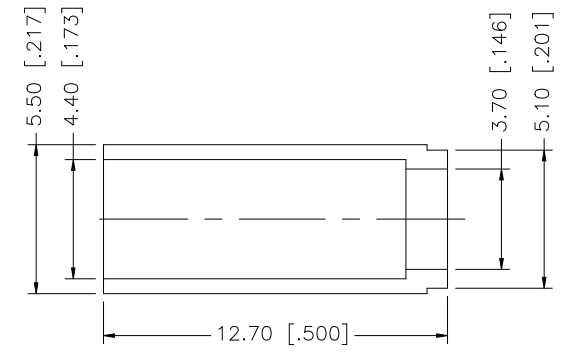
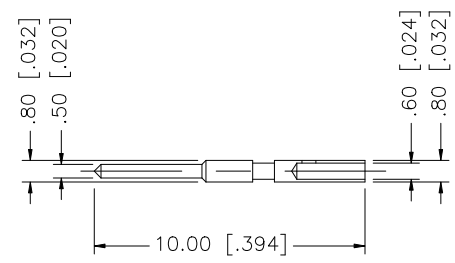
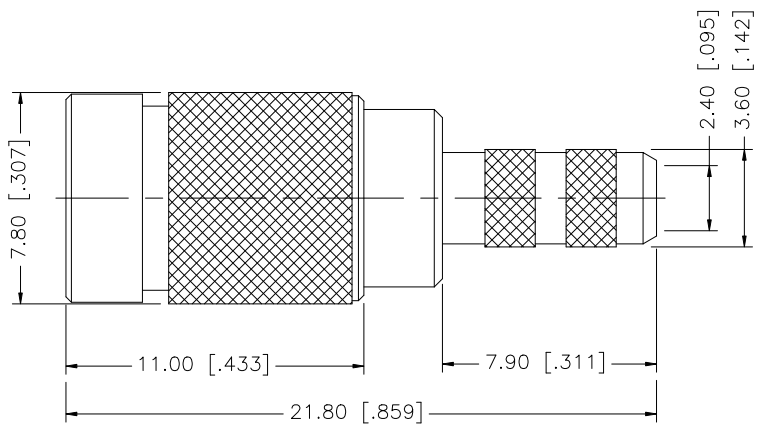
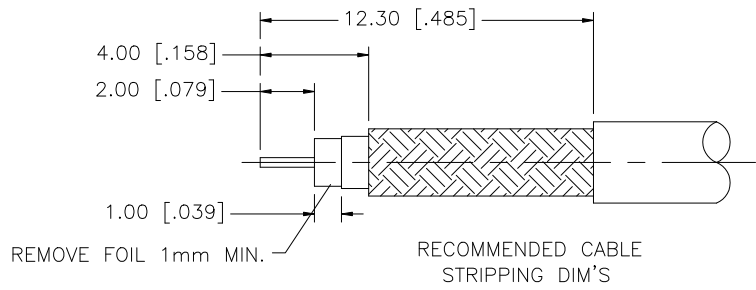


REV.	DATE	DESCRIPTION
NC	07/08/04	INITIAL RELEASE
A	10/03/07	REVISE BODY DIAMETER AND LENGTH
B	11/18/07	CHANGE CABLE DESCRIPTION TO "735A CABLE"



- CRIMP NOTES:
1. CRIMPED FERRULE HEX CRIMP SIZE .178"
 2. CONTACT PIN TO SOLDER.

DESCRIPTION	MATERIAL	FINISH	QTY	UNLESS OTHERWISE SPECIFIED DIMENSIONS ARE IN MILLIMETERS. DIMENSIONS IN [] ARE IN INCHES AND FOR CUSTOMER REFERENCE ONLY.	APPROVALS	DATE	Amphenol Connex							
8							1.0/2.3 CRIMP PLUG (FOR 735A CABLE - 75ohm)							
7						PART DESCRIPTION								
6											PART NO.			
5											282118-75			
4	FERRULE	COPPER	NICKEL	1							DWG. NO. 282118-75.DWG			
3	CONTACT PIN	BRASS	GOLD	1			REV. B							
2	INSULATOR	TEFLON	NATURAL	1			SIZE A							
1	BODY	BRASS	NICKEL	1			SCALE NA							
				UNLESS OTHERWISE SPECIFIED TOLERANCES FOR MILLIMETERS ARE: 0.5 - 8mm ± 0.20mm 8 - 30mm ± 0.40mm 30 - 120mm ± 0.50mm										
				UNLESS OTHERWISE SPECIFIED TOLERANCES FOR INCHES ARE: .020 - .315 = ± 0.007" .315 - 1.180 = ± 0.015" 1.180 - 4.724 = ± 0.020"										
				DO NOT SCALE DRAWING	C:/282/282118-75.DWG									