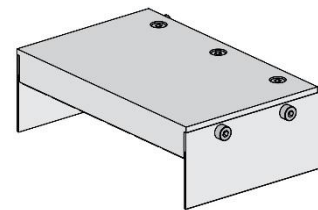


**Order Number**  
**200214-2220**

**molex**<sup>®</sup>

## Application Tooling Specification



### FEATURES

- This tool is used to insert QSFP-DD connectors into a PCB
- Inserts connectors into a PCB without damaging the board
- PCB support plate not included (furnished by customer)

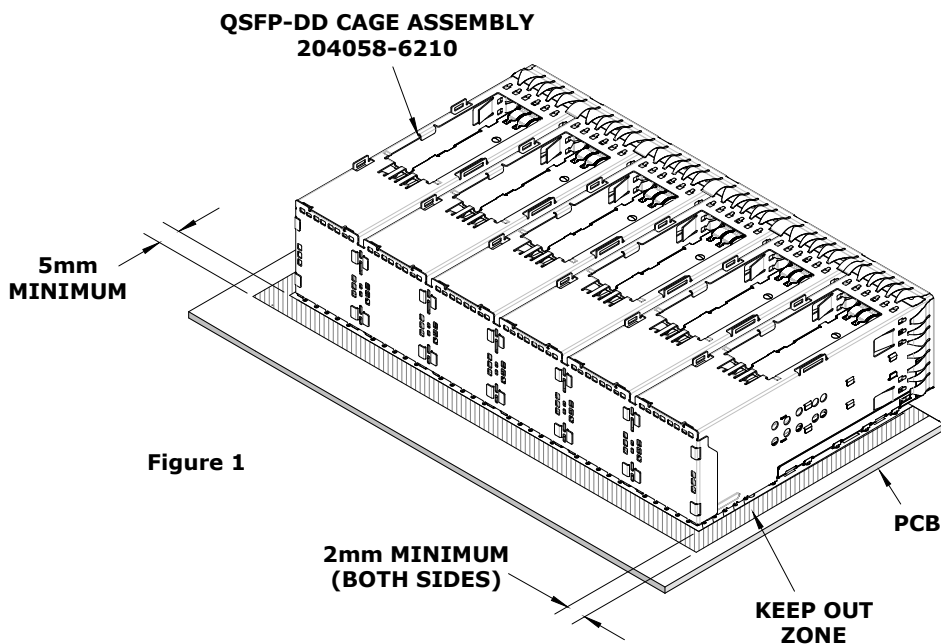
### SCOPE

**Products:** QSFP Double Density 2-by-6 Spring Finger Connector Assembly Without Heat Sinks.

Connector Series No.	Connector Order No.
204058	204058-6210

### Notes:

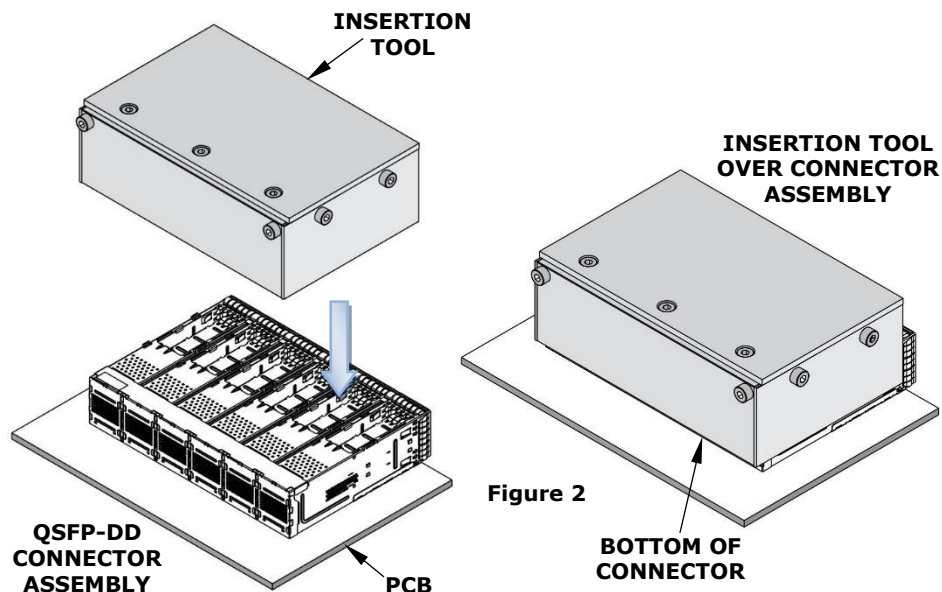
1. See the following pages for tooling operation instructions.
2. These tools require a "Keep Out Zone" around the connector that must be free of components. The right and left sides should have 2.00mm (.080") of clearance, and the rear of the connector should have 5.00mm (.197") clearance. See Figure 1.



## OPERATION

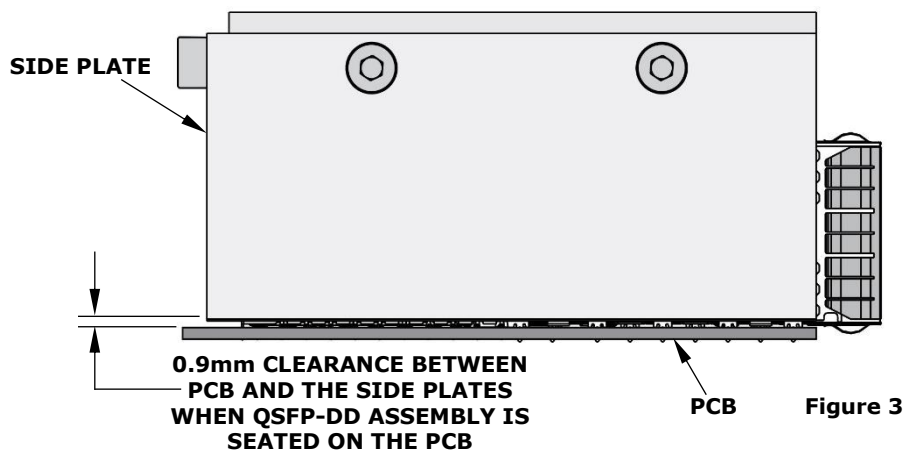
Use the following instructions to insert a 2-by-6 connector into a PCB:

1. By hand, place the connector assembly on the PCB.
2. Place the tool on the connector assembly. See Figure 2.
3. Place the tool, connector and PCB in a press of suitable size and force, and seat the connector assembly as shown. The support plate (furnished by the customer) under the PCB must have clearance for the connector pins as they pass through the PCB.



## CLEARANCE

Use this tool only with a press that has a predetermined shut height when seating a QSFP-DD assembly on a PCB. See Figure 3. The insertion tool does not contact the PCB.



**CAUTION:** Molex application tooling specifications are valid only when used with Molex connectors and tooling.

### Application Tooling Support

**Phone:** (402) 458-TOOL (8665)  
**E-Mail:** applicationtooling@molex.com  
**Website:** www.molex.com/applicationtooling

Molex is a registered trademark of Molex, LLC in the United States of America and may be registered in other countries; all other trademarks listed herein belong to their respective owners.