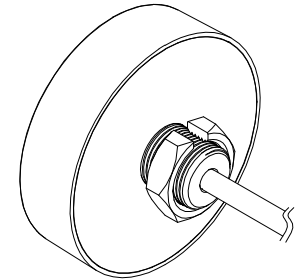
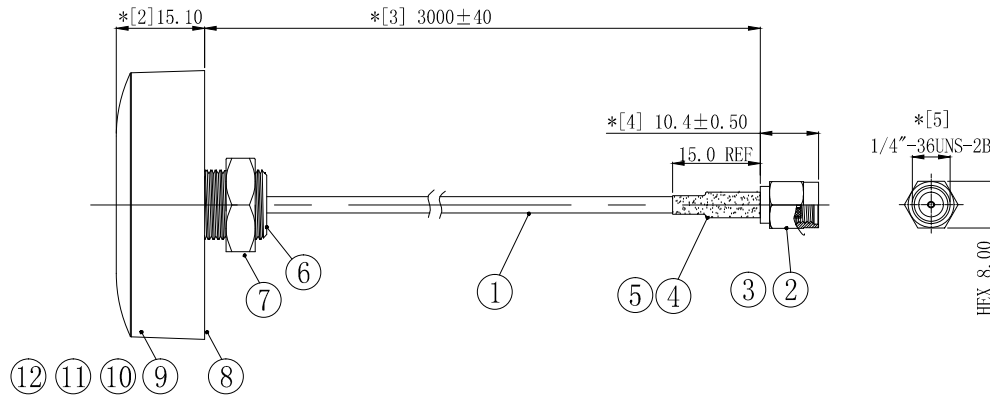
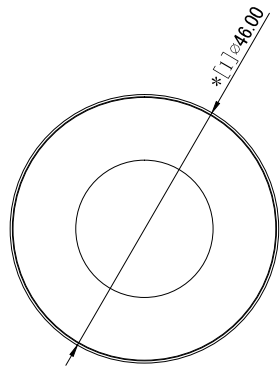


REVISION	DESCRIPTION	DATE	DRAFTER
A0	首次发行	20.12.17	S. He



3D 视图

No.	PART NUMBER	PART NAME & DESCRIPTION	Q' TY	REMARKS
13	2MH030	L10*W15mm*T9.0, EVA+双面背胶	3	---
12	2YG085	铜管, OD4.0 L10.0内孔3.2mm	1	---
11	2YP085	wifi 下层PCB, 带3M L300背胶, FR-4	1	---
10	2YP084	wifi 上层PCB, FR-4, OD41.2*T0.6mm	1	---
9	2SBKG3801-1	小平头蘑菇型胶体, 黑色抗紫外线OD:46.0*H:15.1mm	1	---
8	2SBKG3801-2	塑胶盖, 黑色抗紫外线OD:46.0mm	1	---
7	2LC00S-313	M12螺母, H:16.0*T:5.0mm	1	---
6	2LC00S-314	M12螺柱, OD:15*L:13.0mm	1	---
5	2TA035BK1-015	OD:3.5*L15.0mm, 无卤阻燃, 125H2普通型, 黑色	1	---
4	2LC15S-601	铜管, 镀镍OD:3.9*L9.0	1	---
3	2LC15PF047-5	SMA母针OD:1.5*L5.9mm 镀金	1	---
2	2LC15PM623-2	SMA公头 H8.0*L16.5镀金	1	---
1	2C5R17414BK1	RG174 coaxial-cable, BLACK	1	---

Technical requirements:

- 1 electrical characteristics: impedance: 50 Ω;  
Applicable frequency range: 2.4GHz ~ 2.5GHz VSWR < 2.0;
2. Dimension inspection: [\*] is the FAI test item; \* As a key test item; ■ Controlled items for CPK.
3. Packaging specification: IPCS/ Bag
4. Environmental requirements: products and materials used must meet RoHS requirements.

COMPLIANCE WITH THE REQUIREMENT: ■ RoHS; □ HF; □ SONY SS-00259; □ OTHERS  
\*NO USING ESTRICTED AND BANNED SUBSTANCE

GENERAL TOLERANCE:

LINEAR:	ANGLE:
X ±2.00	X° ±4.00°
X.X ±1.00	X.X° ±3.00°
X.XX ±0.50	X.XX ±2.00°
X.XXX ±0.30	X.XXX ±1.00°

HJ-Tech 东莞市皇捷通讯科技有限公司

FILE NAME: product drawing  
ENG/DATE: Mark/20.07.08

TITLE: wifi小平头蘑菇天线, RG174 线L3.0M

CHE/DATE:

P/N: HJ-Wifi-G174-SMA-L=3M

APP/DATE:

UNIT: mm SCALE: 1:1 REVISION: A0 SHEET: 1/1