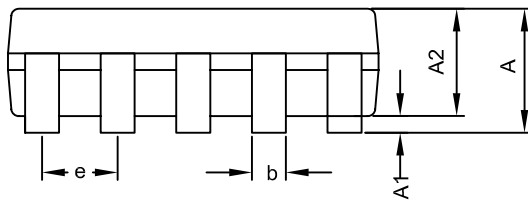
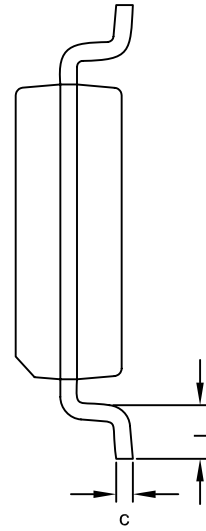
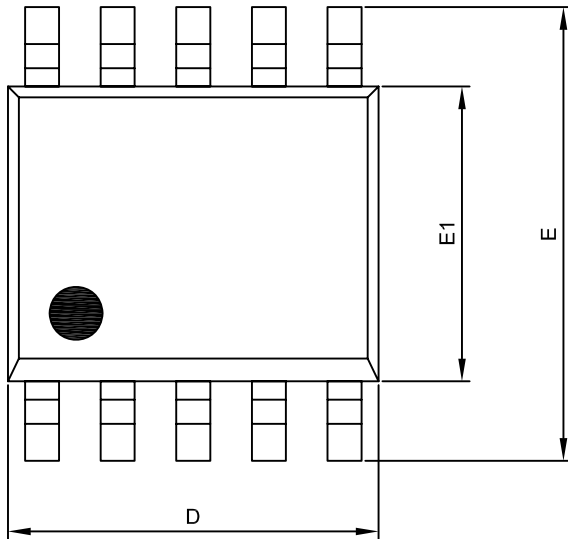
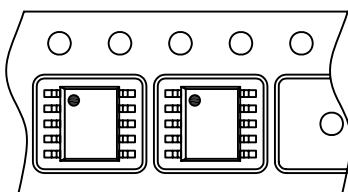


SOP-10



Symble	DIMENSION IN MM			DIMENSION IN INCH		
	MIN.	NOM.	MAX.	MIN.	NOM.	MAX.
A	1.35	1.55	1.75	0.053	0.061	0.069
A1	0.00	---	0.25	0.000	---	0.010
A2	1.15	1.35	1.50	0.045	0.053	0.059
D	4.80	4.90	5.00	0.189	0.192	0.197
E	5.80	6.00	6.20	0.228	0.236	0.244
E1	3.80	3.90	4.00	0.150	0.153	0.157
c	0.19	0.23	0.27	0.007	0.009	0.011
b	0.30	0.38	0.45	0.012	0.015	0.018
e	1.00 BSC			0.039 BSC		
L	0.40	0.84	1.27	0.016	0.033	0.050



Feed Direction

Taping Specification

PACKAGE	Q'TY/REEL
SOP-10	2,500ea