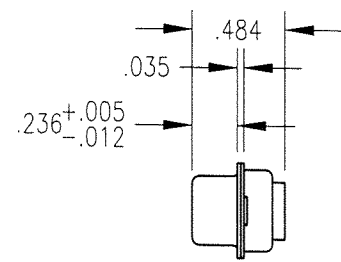
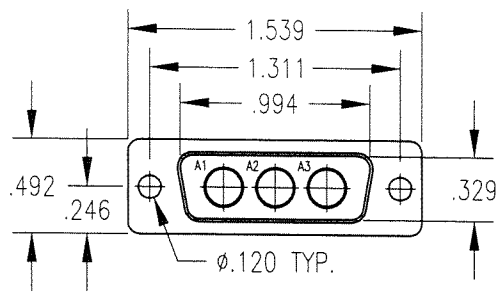
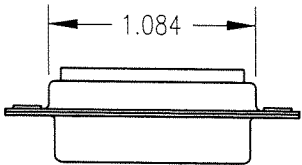


DWG. NO. RM3W3P-00-ZB

REV.	DESCRIPTION	BY DATE	APPD.
B	ECR 6643	10/30/00 ECR	11/1/00



NOTES:

1. MATERIALS:  
SHELL: STEEL PER ASTM A568  
INSULATOR: GLASS FILLED POLYESTER
2. PLATING:  
SHELL: YELLOW CHROMATE OVER ZINC PER ASTM B633  
INSULATOR: GREEN

PER ASME Y14.5M-1994 UNLESS OTHERWISE SPECIFIED: DIMENSIONS ARE IN INCHES (MM)		<b>Litton</b>	
TOLERANCES: DECIMALS .xx ± .01/0.254 .xxx ± .005/0.127 ANGLES ± 2°		Winchester/Retconn 400 Park Road Watertown, Connecticut 06795	
SCALE: 1:1		TITLE	
<b>CUSTOMER DRAWING</b>		3W3P D-SUB HOUSING	
DRAWN KJT	DATE 6/1/98	CHECKED JMC	DATE 6/1/98
APPROVED PRP	DATE 6/1/98	APPROVED PRP	DATE 6/1/98
A		RM3W3P-00-ZB	SHT 1 OF 1 REV. B