

PLEASE CHECK WWW.MOLEX.COM FOR LATEST PART INFORMATION

Part Number: [0350211201](#)
Status: **Active**
Description: Board-In Right Angle Crimp Terminal 35021, Reel, Brass Tin (Sn)

Documents:

[3D Model](#) [Product Specification PS-35044-001 \(PDF\)](#)
[Drawing \(PDF\)](#) [RoHS Certificate of Compliance \(PDF\)](#)

General

Product Family	Crimp Terminals
Series	35021
Comments	Right Angle, Use with Housing 35023
Crimp Quality Equipment	Yes
Product Name	Board-In

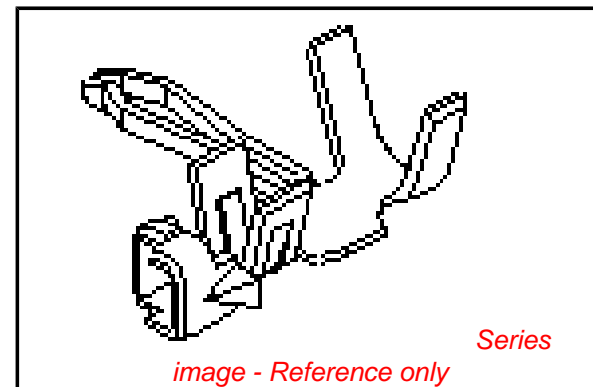
Physical

Gender	Male
Material - Metal	Brass
Material - Plating Mating	Tin
Material - Plating Termination	Tin
Packaging Type	Reel
Plating min: Mating (µin)	32.00
Plating min: Mating (µm)	0.800
Plating min: Termination (µin)	32.00
Plating min: Termination (µm)	0.80
Termination Interface: Style	Crimp or Compression
Wire Insulation Diameter	1.5 mm Max (.059" Max)
Wire Size AWG	24, 30
Wire Size mm ²	N/A

Material Info

Reference - Drawing Numbers

Product Specification	PS-35044-001
Sales Drawing	SD-35021-001, SD-35021-1***



EU RoHS

**ELV and RoHS
Compliant**

REACH SVHC

Contains SVHC: No

Halogen-Free

Status

Halogen-Free

China RoHS



**Need more information on product
environmental compliance?**

Email productcompliance@molex.com
 For a multiple part number RoHS Certificate of Compliance, [click here](#)

Please visit the [Contact Us](#) section for any non-product compliance questions.

Search Parts in this Series

[35021Series](#)

Use With

[35023 Housing](#)

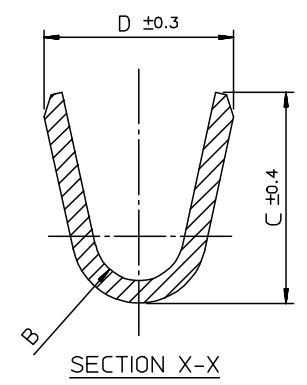
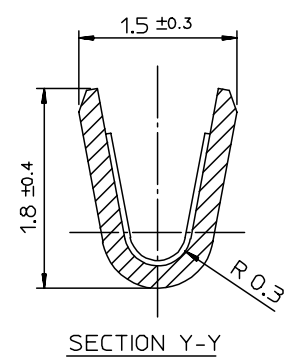
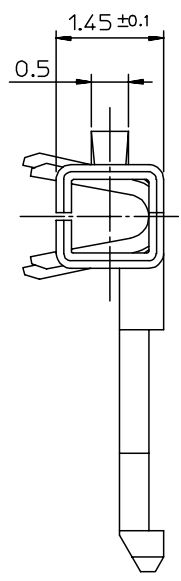
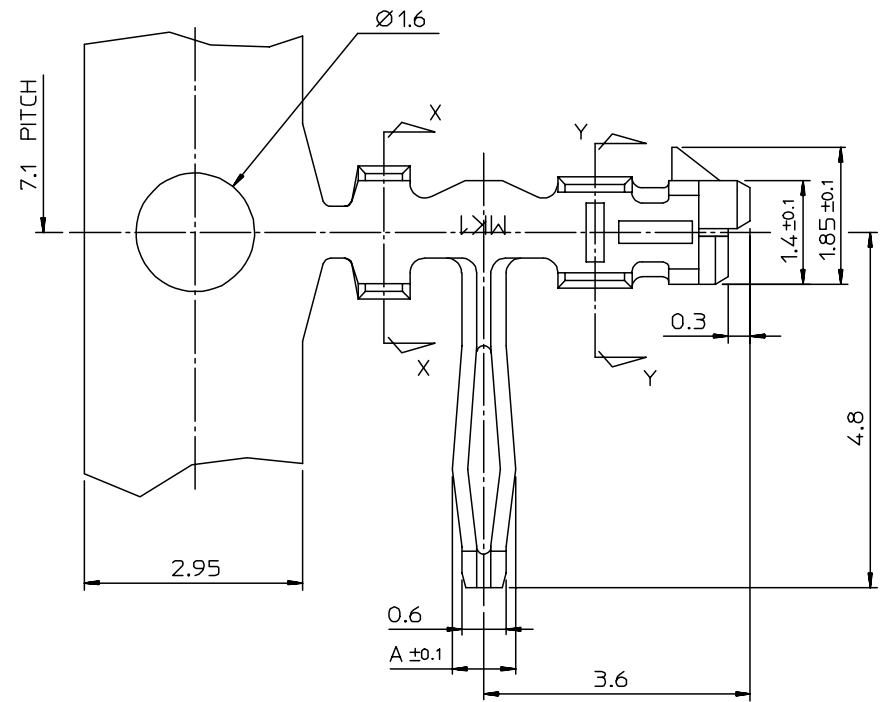
Application Tooling | FAQ

Tooling specifications and manuals are found by selecting the products below. Crimp Height Specifications are then contained in the Application Tooling Specification document.

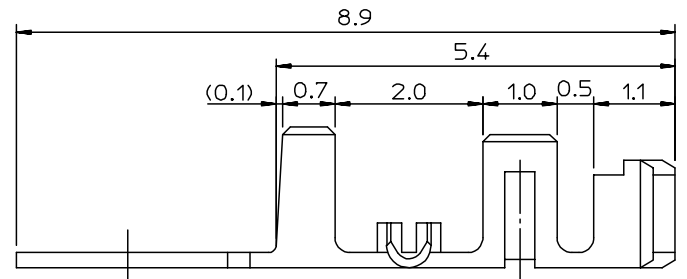
Global

Description	Product #
HAND CRIMP TOOL	0638116900
T2 Terminator Die	0638532000
FineAdjust™ Applicator	0638632000

DWG. NO. SD-35021-001
 SIMILAR ITEM
 PROJECT NO.
 DO NOT SCALE DRAWING DIMENSION IN METRIC



- NOTE
- MATERIAL
 - BRASS (CDA 260)
 - PHOSPHOR BRONZE (CDA 510)
 - PLATING
 - PRE PLATED - TIN OVER COPPER
 - POST PLATED - TIN/LEAD OVER COPPER
 - USED HOUSING : 35022-00**/35023-00**/68418-***00

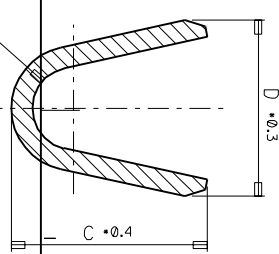
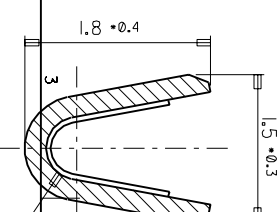
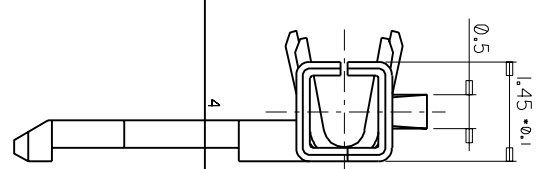
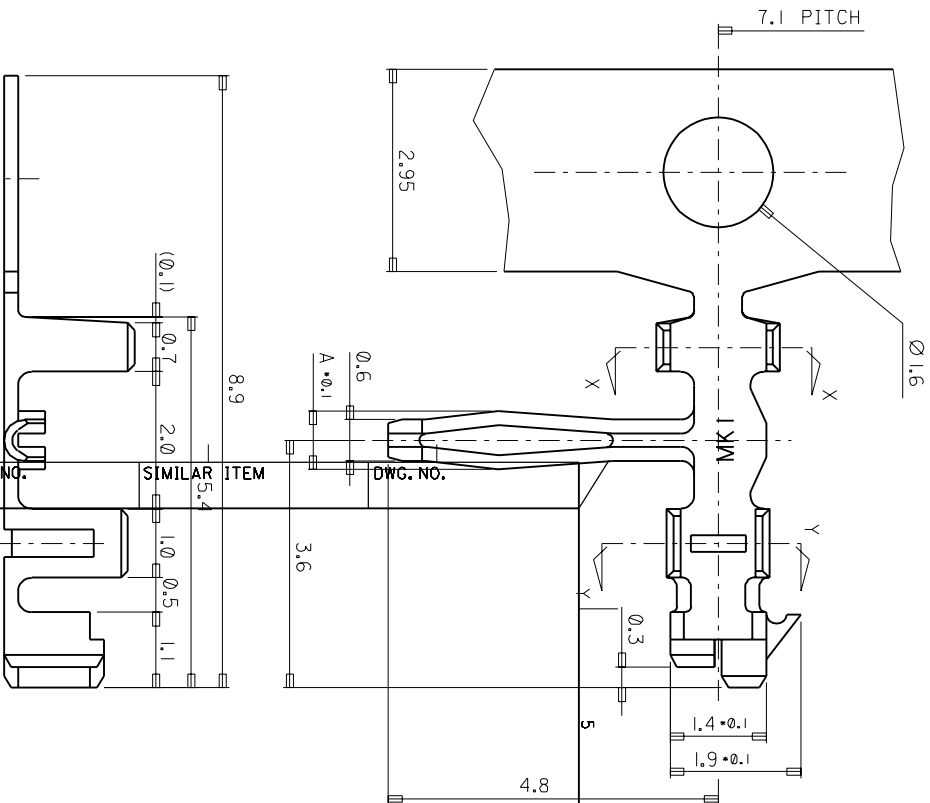


POST-PLATED	PHOS. BRON.	AWG #24-#30	1.8	1.9	R0.4	0.85	350211310	35021-1310
PRE-PLATED	PHOS. BRON.	(INS. DIA: Ø 1.5 MAX.)	2.5	2.5	R0.7	1.05	350211301	35021-1301
	BRASS						350211201	35021-1201
PRE-PLATED	PHOS. BRON.	AWG #22-#28 (INS. DIA: Ø 1.9 MAX.)	2.5	2.5	R0.7	1.05	350211101	35021-1101
	BRASS						350211001	35021-1001
POST-PLATED	PHOS. BRON.						350211110	35021-1110
PLATING	MATERIAL	WIRE RANGE	D	C	B	A	MAT'L NO.	ENG NO.

REVISED EC NO: KOR2007-0027 DRWN: JHLEE 06/09/13 CHK: KSKIM 06/09/13 APPR: YSOOKIM 06/09/13	QUALITY SYMBOLS MAJOR CRITICAL	GENERAL TOLERANCES: (UNLESS SPECIFIED)		SCALE 15-1 <input checked="" type="checkbox"/> mm <input type="checkbox"/> INCH	DESIGN UNITS <input checked="" type="checkbox"/> mm <input type="checkbox"/> INCH	THIRD ANGLE PROJECTION	DIMENSIONS: <input type="checkbox"/> mm <input type="checkbox"/> INCH <input checked="" type="checkbox"/> mm ONLY	SHT REV
		DESCRIPTION R/A B-IN TERMINAL	DRAWN BY & DATE HSSHIN	TITLE: R/A B-IN TERMINAL		MOLEX INCORPORATED		MATERIAL NO. SEE TABLE
REV 1	DRAFT WHERE APPLICABLE MUST REMAIN WITHIN DIMENSIONS	4 PLACES ±0. ±. 3 PLACES ±0. ±. 2 PLACES ±0. ±. 1 PLACE ±0.3 ±.	ANGULAR: ± 1 °	CAD FILENAME SD35021.DGN	APPROVED BY & DATE CWLEE	THIS DRAWING CONTAINS INFORMATION THAT IS PROPRIETARY TO MOLEX INCORPORATED AND SHOULD NOT BE USED WITHOUT WRITTEN PERMISSION.		SIZE B

PROJECT NO. SIMILAR ITEM DWG. NO.
35021-1*** SD 35021-1***

DO NOT SCALE DRAWING
DIMENSION IN METRIC



NOTE

1. MATERIAL
 - 1) BRASS (CDA 260)
 - 2) PHOSPHOR BRONZE (CDA 510)
2. PLATING
 - 1) PRE PLATED - TIN OVER COPPER
 - 2) POST PLATED - TIN/LEAD OVER COPPER
3. USED HOUSING : 35022-00** / 35023-00**

POST-PLATED	PHOS. BRON.	AWG #24-#30	1.8	1.9	R0.4	0.85	35021-1310
PRE-PLATED	PHOS. BRON.	(INS. DIA: Ø 1.5 MAX.)	1.8	1.9	R0.4	0.85	35021-1301
POST-PLATED	PHOS. BRON.	AWG #22-#30 (INS. DIA: Ø 1.9 MAX.)	2.5	2.5	R0.7	1.05	35021-1101
PLATING	MATERIAL	WIRE RANGE	D	C	B	A	ENG. NO.
							35021-1110

REVISED
EC NO. KOR1998-0091
DRWN: HSSHIN(980609)
CHK: JKOH
APPR: CWLEE

REVISIONS
REV DESCRIPTION
C CRITICAL

QUALITY SYMBOLS	GENERAL TOLERANCES: (UNLESS SPECIFIED)	SCALE	DESIGN UNITS	THIRD ANGLE PROJECTION	TITLE
MAJOR	±0.1	15-1	MM	<input checked="" type="checkbox"/>	R/A B-IN TERMINAL
MINOR	±0.05		MM	<input type="checkbox"/>	
	±0.02		MM	<input type="checkbox"/>	
	±0.01		MM	<input type="checkbox"/>	
	±0.005		MM	<input type="checkbox"/>	
	±0.002		MM	<input type="checkbox"/>	
	±0.001		MM	<input type="checkbox"/>	

DRAWN BY & DATE: HSSHIN
CHECKED BY & DATE: JKOH
APPROVED BY & DATE: CWLEE

CAD FILENAME: SD35021.DGN
MATERIAL NO.: 350-21-1***
DRAWING NO.: SD 35021-1***
SHEET NO.: 10F1
SIZE: A

MOLEX INCORPORATED
KOREA

8 7 6 5 4 3 2 1
A B C D E F