

THIS DRAWING IS UNPUBLISHED.

RELEASED FOR PUBLICATION

---

© COPYRIGHT - By -

ALL RIGHTS RESERVED.

LOC  
FT

DIST  
0

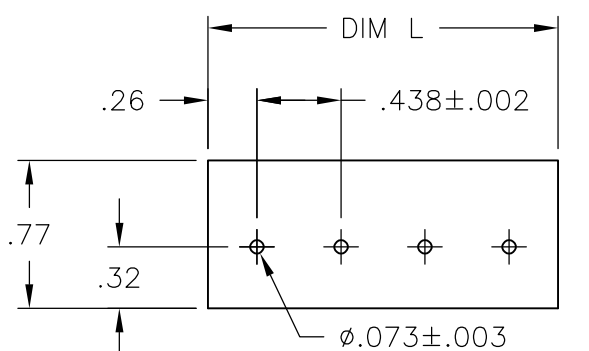
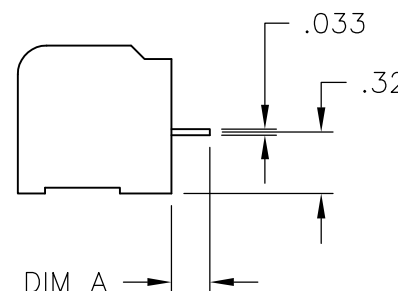
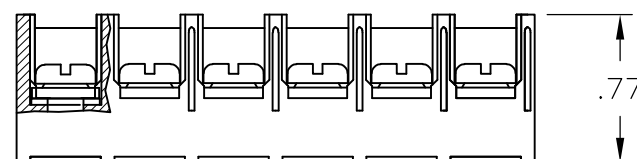
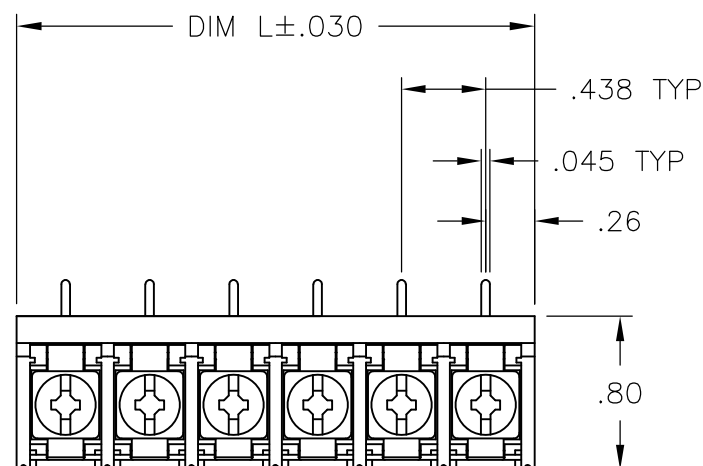
REVISIONS

| P  | LTR | DESCRIPTION               | DATE    | DWN | APVD |
|----|-----|---------------------------|---------|-----|------|
| D1 |     | REVISED PER ECO-12-009693 | 23MAY12 | KH  | MS   |

MATERIALS:  
 HOUSING: THERMOPLASTIC, UL94V-0, BLACK.  
 TERMINAL: BRIGHT TIN PLATED COPPER ALLOY.  
 SCREWS: 8-32, ZINC PLATED STEEL.

ELECTRICAL:  
 CURRENT RATING: 30A  
 VOLTAGE RATING: 600V  
 WIRE RANGE: 10-18 AWG (UL)  
 10-22 AWG (CSA)

MECHANICAL:  
 RECOMMENDED TORQUE: 20 IN-LB.  
 OPERATING TEMP.: -40°C TO +120°C.



RECOMMENDED PCB LAYOUT

|                       |       |                 |              |              |
|-----------------------|-------|-----------------|--------------|--------------|
| .126                  | 4.010 | 9               | 8PCR-09-006A | 2-1546566-1  |
| .200                  | 8.823 | 20              | 8PCR-20-006  | 2-1546566-0  |
| .200                  | 8.385 | 19              | 8PCR-19-006  | 1-1546566-9  |
| .200                  | 7.948 | 18              | 8PCR-18-006  | 1-1546566-8  |
| .200                  | 7.510 | 17              | 8PCR-17-006  | 1-1546566-7  |
| .200                  | 7.073 | 16              | 8PCR-16-006  | 1-1546566-6  |
| .200                  | 6.635 | 15              | 8PCR-15-006  | 1-1546566-5  |
| .200                  | 6.198 | 14              | 8PCR-14-006  | 796875-3     |
| .200                  | 5.760 | 13              | 8PCR-13-006  | 1-1546566-3  |
| .200                  | 5.323 | 12              | 8PCR-12-006  | 1-1546566-2  |
| .200                  | 4.885 | 11              | 8PCR-11-006  | 796875-1     |
| .200                  | 4.448 | 10              | 8PCR-10-006  | 5-1546159-4  |
| .200                  | 4.010 | 9               | 8PCR-09-006  | 1546566-9    |
| .200                  | 3.573 | 8               | 8PCR-08-006  | 4-1437657-3  |
| .200                  | 3.135 | 7               | 8PCR-07-006  | 5-1546159-2  |
| .200                  | 2.698 | 6               | 8PCR-06-006  | 3-1437657-7  |
| .200                  | 2.260 | 5               | 8PCR-05-006  | 3-1437657-3  |
| .200                  | 1.823 | 4               | 8PCR-04-006  | 3-1437657-1  |
| .200                  | 1.385 | 3               | 8PCR-03-006  | 2-1437657-8  |
| .200                  | .948  | 2               | 8PCR-02-006  | 2-1437657-2  |
| DIM A<br>+.020/-0.010 | DIM L | NO<br>OF<br>POS | TE<br>NUMBER | TE<br>NUMBER |

|   |  |                               |                        |                    |
|---|--|-------------------------------|------------------------|--------------------|
| THIS DRAWING IS A CONTROLLED DOCUMENT.  |  | DWN<br>S SCHLEGEL<br>10/25/06 | <b>TE Connectivity</b> |                    |
| DIMENSIONS:<br>INCHES   |  | CHK<br>S. YODER<br>10/25/06   |                        |                    |
| TOLERANCES UNLESS OTHERWISE SPECIFIED:  |  | APVD<br>S. YODER<br>10/25/06  | NAME                   |                    |
| 0 PLC ± -<br>1 PLC ± -<br>2 PLC ± .01<br>3 PLC ± .005<br>4 PLC ± -<br>ANGLES ± 1° |  | PRODUCT SPEC<br>-             | 8PCR-XX-006 ASSEMBLY   |                    |
| MATERIAL<br>-   |  | FINISH<br>-                   | APPLICATION SPEC<br>-  | RESTRICTED TO<br>- |
|   |  | WEIGHT<br>-                   | SIZE<br>A3             | CAGE CODE<br>00779 |
|   |  | DRAWING NO<br>C-2-1437657-2   |                        | REV<br>D1          |
|   |  | CUSTOMER DRAWING              |                        | SCALE<br>1:1       |
|   |  | SHEET<br>1 OF 1               |                        |                    |