

12kV 0.8A HIGH VOLTAGE DIODES

HC-SERIES

HIGH VOLTAGE RECTIFIER BLOCKS WITH MOUNTING SLOTS.

Features

- Rectifier Blocks
- High Voltage
- Mounting
- Slots

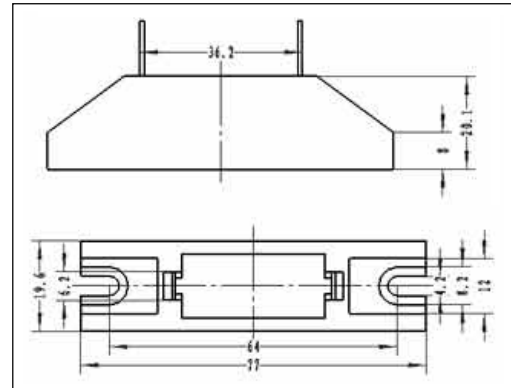
Applications

- X light Power supply
- Laser
- Voltage doubler circuit
- Microwave emission power

Maximum Ratings and Characteristics

- Absolute Maximum Ratings

Outline Drawings : mm



Cathode Mark

Type	Mark
HC12	

Items	Symbols	Condition	HC12	Units
Repetitive Peak Reverse Voltage	V_{RRM}		12	kV
Average Output Current	I_o	$T_a=25^{\circ}\text{C}$, Resistive Load	0.8	A_{peak}
Surge Current	I_{FSM}		50	A_{peak}
Junction Temperature	T_j		155	$^{\circ}\text{C}$
Allowable Operation Case Temperature	T_c		125	$^{\circ}\text{C}$
Storage Temperature	T_{stg}		-40 to +155	$^{\circ}\text{C}$

- Electrical Characteristics ($T_a=25^{\circ}\text{C}$ Unless otherwise specified)

Items	Symbols	Conditions	HC12	Units
Maximum Forward Voltage Drop	V_F	at 25°C , $I_F = I_{F(AV)}$	10.5	V
Maximum Reverse Current	I_{R1}	at 25°C , $V_R = V_{RRM}$	0.5	μA
	I_{R2}	at 100°C , $V_R = V_{RRM}$	5.0	μA
Maximum Reverse Recovery Time	T_{rr}	at 25°C	--	nS
Junction Capacitance	C_j	at 25°C , $V_R=0\text{V}$, $f=1\text{MHz}$	--	pF