

SMB Series

1000A

1 Application:

Fast Delivery Time

- For instantaneous over-voltage protection to ADSL,ISDN,MODEM,FAX,TEL,Power Supplies,Alarm systems.
- For instantaneous over-voltage protection to RS485,RS232 port, CATV,video tranceiver.
- For instantaneous over-voltage protection to ammeter,water meter auto admin system, etc

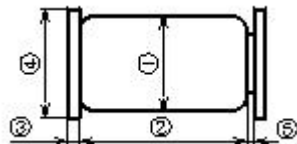
2 Features

- Small capacitance and excellent insulation resistance(100MΩ min).
- Small size,No polarity.No dark effect.
- Low electrode capacitance(1pF max).
- Quick response for electrostatic,surge voltage and low limiting voltage.
- Stable for repeated discharge test conditions.
- Operating temperature: -40℃ ~ +85℃. Storage temperature: -40℃ ~ +125℃.

3 Electrical Characteristics

Part Number	DC Spark-Over Voltage Vs(V)		Insulation Resistance		Capacitance of electrostatic	Surge current capacity 8/20us	Surge Life Test
	Nominal value (min-max)		Test voltage	IR (MΩ)	1KHz-6V(PF)		
SMB-141N	140V	(98V-182V)	DC100V	>1000MΩ	1PF(MAX)	1000A	8/20us 1000A 10times
SMB-181N	180V	(126V-234V)					
SMB-201M	200V	(160V-240V)					
SMB-251M	250V	(200V-300V)					
SMB-301M	300V	(240V-360V)					
SMB-401M	400V	(320V-480V)					
SMB-471M	470V	(400V-560V)	DC250V	>1000MΩ	1PF(MAX)	1000A	10times
SMB-501M	500V	(400V-600V)					
SMD-901M	900V	(720V-1080V)					
SMB-901M	900V	(720V-1080V)					

4 Dimension(mm):



Model Series	①	②	③	④	⑤
SMB	Φ2.6±0.3	4.2±0.4	0.4±0.2	Φ2.7±0.3	0.5 Max

