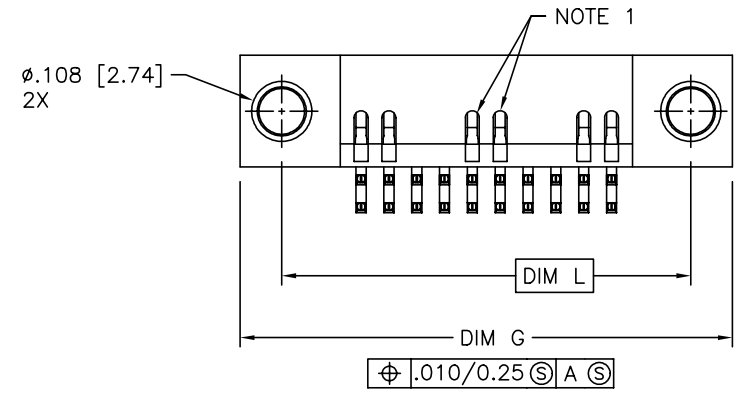
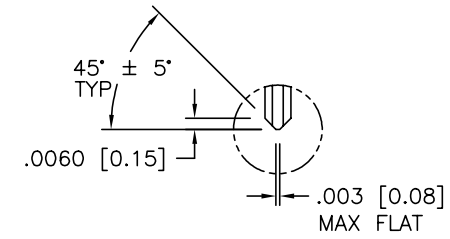
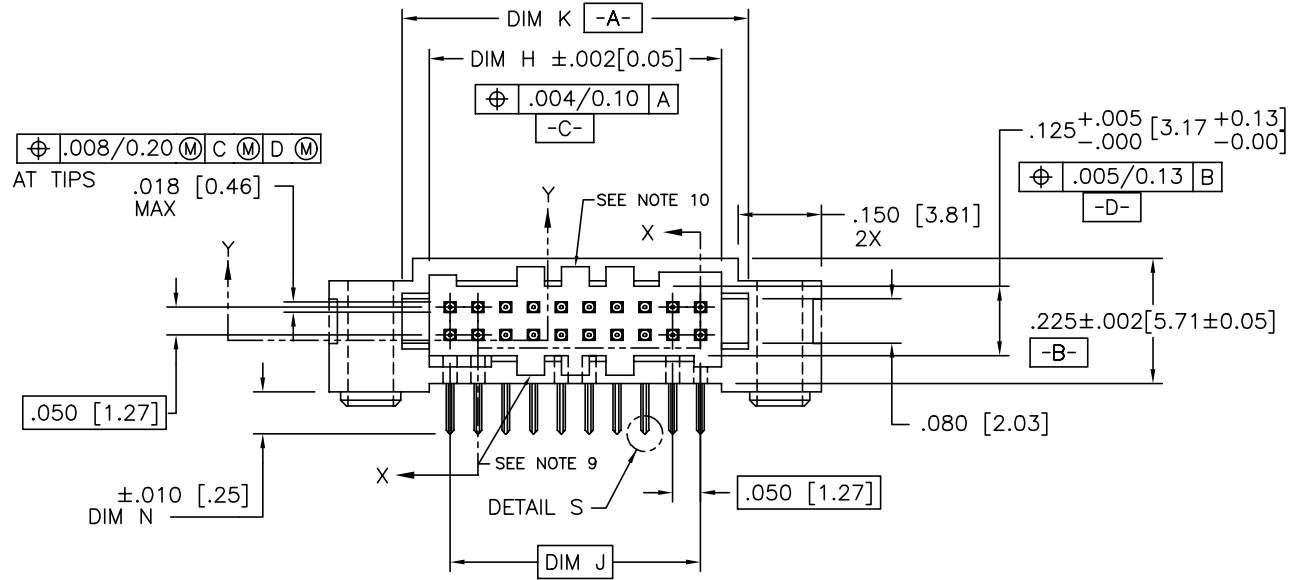


PRODUCT NUMBER
SEE TABLE

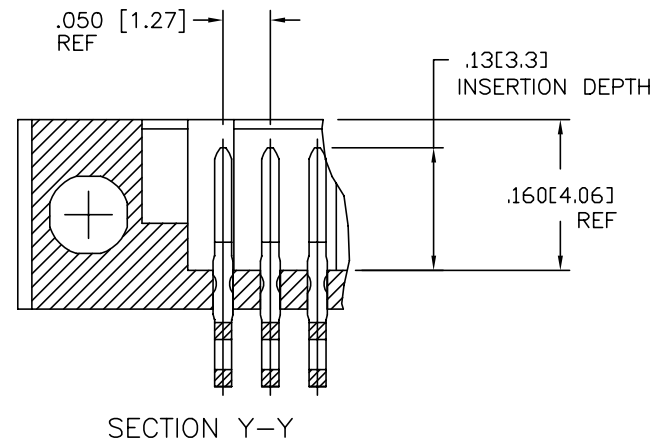
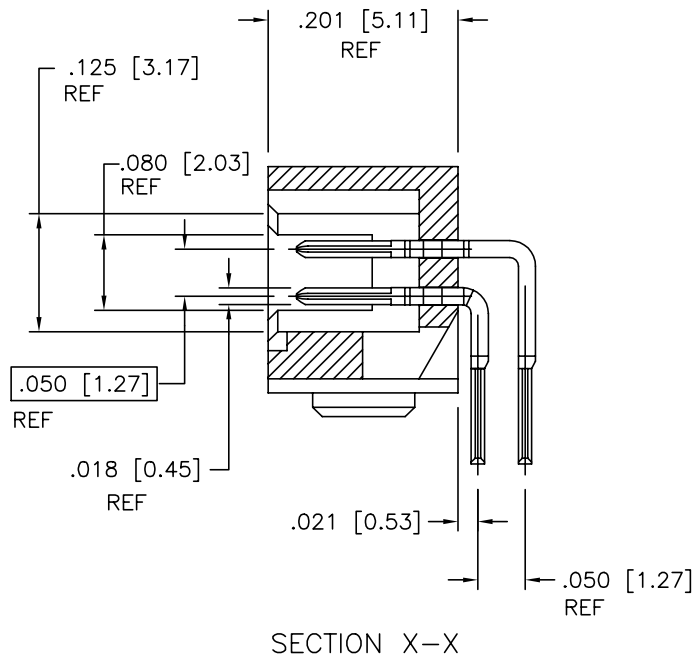


mat'l. code		surface		tolerance		projection		product family	
-		ISO 1302		ISO 406 ISO 1101				RIBCAGE	
ltr		ecn no		date		tolerances unless otherwise specified		title	
H	M05-0123	MHT	6/07/05			.XX \pm .01/0.3		RIBCAGE HORIZONTAL HEADER ASSEMBLY	
J	M05-0196	MHT	9/13/05	angles	linear	.XXX \pm .005/0.13		dwg no	
K	M06-0225	ERE	06/12/06	0' \pm x'		.XXXX \pm .0020/0.05		sheet 1 of 4	
L	M06-0370	MHT	9/26/06	dr	M. CORNMANN	6/6/95		size	
M	M09-0058	MHT	4/02/09	enr	D. WHITING	6/6/95		A3	
N	N10-0122	YOH	5/11/10	chr	D. WHITING	6/6/95		type	
				appd	D. WHITING	6/6/95		Product Customer Drawing	
sheet	revision	N	N	N	N				
index	sheet	1	2	3	4				



Copyright FCI

PRODUCT NUMBER
SEE TABLE



mat'l. code		surface		tolerance		projection		product family	
-		ISO 1302		ISO 406 ISO 1101				RIBCAGE	
ltr	ecn no	dr	date	tolerances unless otherwise specified		INCH/MM		title	
N				angles	linear	.XX±.01/0.3 .XXX±.005/0.13 .XXXX±.0020/0.051		RIBCAGE HORIZONTAL HEADER ASSEMBLY	
				0°±x'		scale 3:1		dwg no	
		dr	M. CORNMAN	6/6/95				sheet 2 of 4	
		enr	D. WHITING	6/6/95				95780	
		chr	D. WHITING	6/6/95				size	
		appd	D. WHITING	6/6/95				A3	
sheet index		revision sheet						type Product Customer Drawing	

Copyright FCI

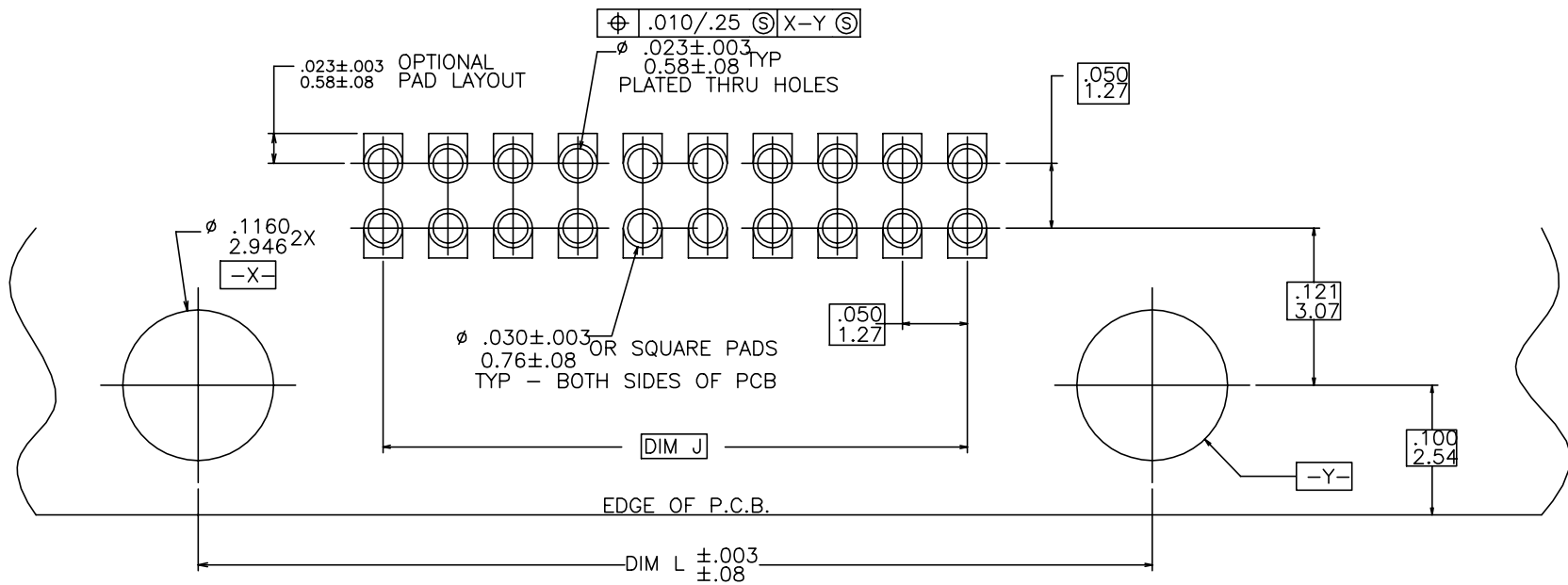
PRODUCT NO. NOTE 5,6	SIZE	DIM G	DIM H	DIM J	DIM K	DIM L	TAIL LENGTH DIM N
93120 OR 87402 -105	2X5	.635/16.13	.275/6.90	.200/5.08	.380/9.65	.485/12.32	.075/1.90
-110	2X10	.885/22.48	.525/13.34	.450/11.43	.630/16.00	.735/18.67	
-115	2X15	1.135/28.83	.775/19.68	.700/17.78	.880/22.35	.985/25.02	
-120	2X20	1.385/35.18	1.025/26.03	.950/24.13	1.130/28.70	1.235/31.37	
-125	2X25	1.635/41.52	1.275/32.38	1.200/30.48	1.380/35.05	1.485/37.72	
-130	2X30	1.885/47.88	1.525/38.74	1.450/36.83	1.630/41.40	1.735/44.07	
-135	2X35	2.135/54.23	1.775/45.08	1.700/43.18	1.880/47.75	1.985/50.42	
-140	2X40	2.385/60.58	2.025/51.43	1.950/49.53	2.130/54.10	2.235/56.77	
-145	2X45	2.635/66.93	2.275/57.78	2.200/55.88	2.380/60.45	2.485/63.12	
-150	2X50	2.885/73.28	2.525/64.14	2.450/62.23	2.630/66.80	2.735/69.47	.075/1.90
-150N	2X50	2.885/73.28	2.525/64.14	2.450/62.23	2.630/66.80	2.735/69.47	.125/3.18
-305	2X5	.635/16.13	.275/6.90	.200/5.08	.380/9.65	.485/12.32	.085/2.16
-310	2X10	.885/22.48	.525/13.34	.450/11.43	.630/16.00	.735/18.67	
-320	2X20	1.385/35.18	1.025/26.03	.950/24.133	1.130/28.70	1.235/31.37	
-330	2X30	1.885/47.88	1.525/38.74	1.450/36.83	1.630/41.40	1.735/44.07	
-345	2X45	2.635/66.93	2.275/57.78	2.200/55.88	2.380/60.45	2.485/63.12	.085/2.16
-510	2X10	.885/22.48	.525/13.34	.450/11.43	.630/16.00	.735/18.67	.125/3.18
-515	2X15	1.135/28.83	.775/19.68	.700/17.78	.880/22.35	.985/25.02	
-520	2X20	1.385/35.18	1.025/26.03	.950/24.13	1.130/28.70	1.235/31.37	
-525	2X25	1.635/41.52	1.275/32.38	1.200/30.48	1.380/35.05	1.485/37.72	
93120 OR 87402 -530	2X30	1.885/47.88	1.525/38.74	1.450/36.83	1.630/41.40	1.735/44.07	.125/3.18

mat'l. code		surface		tolerance		projection		product family	
-		ISO 1302		ISO 406 ISO 1101				RIBCAGE	
ltr	ecn no	dr	date	tolerances unless otherwise specified		INCH/MM		title	
N				angles	linear			RIBCAGE HORIZONTAL HEADER ASSEMBLY	
				0°±x'		scale 3:1		dwg no	
								sheet 3 of 4	
				dr	M. CORNMAN	6/6/95		size	
				enr	D. WHITING	6/6/95		95780	
				chr	D. WHITING	6/6/95		A3	
				appd	D. WHITING	6/6/95		type Product Customer Drawing	
sheet	revision								
index	sheet								



Copyright FCI

PRODUCT NUMBER
SEE TABLE



RECOMMENDED P.C.B. LAYOUT
SCALE 20/1

NOTES:

1. HOUSING MATERIAL:
GLASS FILLED THERMOPLASTIC FLAME RETARDANT PER UL 94V-0.
COLOR: NATURAL.
2. TERMINAL PLATING:
30u"/.76u MIN HARD Au OVER 50u"/1.27uNi ON CONTACT ZONES.
200u"/5.08u MIN Sn OVER 50u"/1.27u Ni IN SOLDERING ZONES.
3. CORING IN CENTER TO BE PRESENT ON PARTS THAT ARE 2X40 OR LARGER.
4. SUGGESTED FASTENERS:
#2 HI-LO THREAD 1/4" PANHEAD.
FASTECH INC.
(516) 242-5699

OR;
#1 CAPHEAD SCREW (3/8" LONG) AND NUT FOR (.062/1.57 BOARD).
5. 93120 AND 87402 ARE THE SAME. PLEASE ORDER AS 93120.
6. ADD "LF" SUFFIX AT THE END OF PART NUMBER FOR LEAD FREE OPTION.
7. THIS PRODUCT MEETS EUROPEAN UNION DIRECTIVES AND OTHER COUNTRY REGULATION AS DESCRIBED IN GS-22-008.
8. THE HOUSING WILL WITHSTAND EXPOSURE TO 260°C PEAK TEMPERATURE FOR 15 SECONDS IN A WAVE SOLDER APPLICATION WITH A 1.5mm MINIMUM THICK CIRCUIT BOARD. SEE APPLICATION NOTES/PROCEDURES IF THEY ARE AVAILABLE.
9. MOLDING FLOW RESTRICTOR QUANTITY AND LOCATION IS MANUFACTURING OPTION.
10. VACUUM CAP SLOT REQUIRED ON ALL SIZES, SLOT MAY BE LOCATED ON OPPOSITE SIDE FOR 2 X 5.

mat'l. code		surface		tolerance		projection		product family	
-		ISO 1302		ISO 406 ISO 1101				RIBCAGE	
ltr	ecn no	dr	date	tolerances unless otherwise specified					
N				angles	linear	.XX±.01/0.3	INCH/MM		title
				O'±x'		.XXX±.005/0.13	scale 3:1		RIBCAGE HORIZONTAL HEADER ASSEMBLY
				dr	M. CORNMAN	6/6/95			dwg no
				enrg	D. WHITING	6/6/95	sheet 4 of 4		size
				chr	D. WHITING	6/6/95	95780		A3
				appd	D. WHITING	6/6/95	type		Product Customer Drawing
sheet	revision								
index	sheet								