

ATLANTIC VERSION TERMINATOR INTERFACE ADAPTER	PART NUMBER	REVISION	DESCRIPTION	FEED TYPE	APPLICATOR STYLE CONVERSION CHART						
					CONVERT TO	PART NUMBERS REQUIRED					
	2150300-2	A	FINE CRIMP HEIGHT ADJUST	PNEUMATIC	SERVO LATCH PLATE SMART APPLICATOR	2119951-1	1901697-1	8-2150300-5	-	-	2168400-7 (QUANTITY 2)
	2150300-5	A	FINE CRIMP HEIGHT ADJUST	SERVO LATCH PLATE	-	-	-	-	-	-	-
	2150300-6	A	NON-CRIMP HEIGHT ADJUST	SERVO LATCH PLATE	PNEUMATIC FEED	2119950-1	2119792-2	-	2119641-1	-	2063440-2
	2150300-7	A	FINE CRIMP HEIGHT ADJUST	NONE	-	-	-	-	-	-	-
	7-2150300-7	A	CRIMP TOOLING KIT	-	-	-	-	-	-	-	-

APPLICATOR DATA		
CRIMP WIRE	SIZE	TYPE
WIRE	4.70 mm [ .185 ]	F
INSUL	5.50 mm [ .217 ]	F
APPLICATOR INSTRUCTIONS 408-10390		

TERMINAL DATA: LEAR TERMINAL	LEAR CRIMP SPECIFICATION		
TERMINAL NAME: RING TYPE CONNECT			
WIRE STRIP LENGTH 6.20-6.80 mm [ .244-.268 IN ]	INSULATION DIAMETER RANGE Ø3.80-5.10 mm [ .150-.201 IN ]		
TERMINAL APPLICATION SPECIFICATION	LEAR SPEC		
TERMINALS APPLIED			
TE TERMINAL	LEAR TERMINAL	TE TERMINAL	LEAR TERMINAL
1572446-1	25233.331.011	1572446-6	25233.123.011
1572446-2	25233.331.322	1572446-7	25233.123.322
1572446-3	25233.213.004	1572446-8	25233.123.009
1572446-4	25233.213.320	1572446-9	25233.212.179
1572446-5	25233.123.014	1-1572446-0	25233.213.011

WIRE SIZE	CRIMP HEIGHT mm [INCH]	CRIMP HEIGHT REFERENCE SETTING
6.00mm2	3.10+0.1/-0.05 [ .122+.004/- .002 ]	8.1
4.00mm2	2.85+0.1/-0.05 [ .112+.004/- .002 ]	10.8

- 1 RECOMMENDED SPARE PARTS
- 2 GREASE BEARING SURFACES LIGHTLY
- 3 LUBRICATE DAILY PER THE APPLICATOR INSTRUCTION SHEET SUPPLIED WITH THE APPLICATOR.
- 4 APPLICATOR SPECIFIC DATA TO BE ENTERED INTO BLANK MEMORY CHIP AT ASSEMBLY. SEE BELOW FOR PART NUMBER:  
 PNEUMATIC FEED WITH "SMART APPLICATOR" CONVERSION: 8-2150300-4  
 SERVO FEED WITH "FINE CRIMP HEIGHT ADJUST": 8-2150300-5  
 SERVO FEED WITH "NON-CRIMP HEIGHT ADJUST": 8-2150300-6
- 5 ADJUSTMENT OF THE STRIPPER MAY BE REQUIRED WHEN MOVING THE APPLICATOR BETWEEN BENCH AND LEADMAKER APPLICATIONS.
- 6 APPLY PART NUMBER 1-23419-5 LOCTITE TO THREADS OF ITEMS 62 & 242. FOR -6 ONLY APPLY PART NUMBER 1-23419-5 LOCTITE TO THREADS OF ITEMS 37 & 242.
- 7 GREASE THREADS, GROOVE AND O-RING ON ITEMS 35 & 252.
- 8 MAGNET, ITEM 166 MUST BE ORIENTED CORRECTLY IN ORDER TO PROPERLY ACTUATE THE COUNTER.
- 9 CRIMP HEIGHT REFERENCE SETTING WAS THE SETTING USED WHEN THE APPLICATOR WAS QUALIFIED AT THE FACTORY. ADJUSTMENT MAY BE NECESSARY WHEN RUNNING APPLICATOR IN THE FIELD.
- 10 TERMINAL PITCH NOT COMPATIBLE WITH MECHANICAL FEED.
- 11 WHEN ASSEMBLING -6 NON-CRIMP HEIGHT ADJUST APPLICATOR USE SHIM PACK 2119957-2 TO ALIGN APPLICATOR'S MAXIMUM WIRE CRIMP HEIGHT AT NORMAL TERMINATOR SHUT HEIGHT

**\*WARNING**  
 ON INSTALLATION, SET WIRE DISC, ITEM 40 TO LARGEST WIRE SIZE SETTING. USE OF SETTINGS BELOW MINIMUM REQUIRED CRIMP HEIGHT SETTING WILL CAUSE DAMAGE TO CRIMP TOOLING.

ATLANTIC VERSION  
 Shown on sheets 1 of 4 & 2 of 4  
 (Pacific version shown on sheets 3 of 4 & 4 of 4)

SET UP GAUGE	LOC	DIST	REVISIONS			
2119599-2	A	66	REV	DATE	BY	APPV
			A	RELEASED	12FEB2013	BW GB

ITEM NO	QTY	DESCRIPTION	DATE	BY	APPV	
- 1	1	1	1	455888-3	SPACER, CRIMPER	261
- 1	1	1	1	2119957-2	APPLICATOR SHIM PACK	260
- 1	1	1	1	8-21084-0	O-RING, .676 ID, .070 DIA. MAT.	252
- 1	1	1	1	2119640-1	PUSH ROD, AIR FEED	250
- 1	1	1	1	2079988-1	BUSHING, LCH5-12, MISUMI	249
- 1	1	1	1	2119641-1	FEED CAM, AIR FEED	248
- 1	1	1	1	2119798-1	DETENT PIN	247
- 1	1	1	1	1-22279-3	SPRING, COMPRESSION	246
- 1	1	1	1	2119759-1	RAM, AMP STYLE, END FEED, NON-ADJUST	245
- 1	1	1	1	2119082-9	CAM, SNAIL, INSULATION ADJUSTMENT	244
- 1	1	1	1	2079764-1	WASHER, WAVE SPRING, CREST-TO-CREST	243
- 1	1	1	1	2119083-1	RETAINER, INSULATION DIAL	242
- 1	2	2	-	2168400-7	SHCS, LOW HEAD, RoHS, M5 X 10	240
- 1	-	-	-	2119580-1	MECHANICAL FEED ASSEMBLY	239
- 1	-	-	-	2063440-2	AIR FEED MODULE	238
- 1	1	1	-	2119740-2	TAG, IDENTIFICATION	213
- 1	REFREF	-	-	1901697-1	FEED FINGER ASSEMBLY, EF	183
- 1	-	-	-	21045-3	RING, RETAIN, EXTERN, 3/16 CRESCENT	172
- 1	1	1	1	994969-1	MAGNET, RARE EARTH HIGH ENERGY	166
- 1	REFREFREFREF	-	-	994970-2	COUNTER, MAGNETIC	164
- 1	-	-	-	240638-1	SPRING, FEED FINGER	163
- 1	-	-	-	3-23627-7	PIN, RETAIN, GRVD, 3/16 X .854	137
- 1	REFREF	-	-	SEE NOTE 4	MEMORY CHIP, PROGRAMMED	135
- 1	1	1	-	1633743-1	SERVO FEED LATCH ASM	133
- 1	1	1	1	455888-6	SPACER, CRIMPER	82
- 1	1	1	1	2119791-5	DEPRESSOR, WIRE	73
- 1	1	1	1	2119956-2	DOCUMENTATION PACKAGE	71
- 2	2	2	2	2-18032-2	SCR, SET, FLT POINT M3 X 10.0	70
- 1	1	1	1	2119943-1	WASHER, SPACER	69
- 1	-	-	-	2119740-1	TAG, IDENTIFICATION	67
- 2	2	2	2	2168078-1	SCREW, DRIVE, RH, RoHS	66
- 1	-	-	-	2119793-1	LIMITER, ADJUSTMENT BOLT	63
- 3	-	-	-	992763-5	SCR, SET, SOC, CONE POINT, M3 x 4.0	62
- 1	1	1	1	2079383-4	SCR, BHSC, RoHS (M4 X 8)	60
- 1	-	-	-	2063961-1	FEED FINGER	58
- 4	4	4	4	2168400-4	SHCS, LOW HEAD, RoHS, M4 X 8	57
- 2	2	2	2	2168083-9	SCR, SKT HD CAP, RoHS, M4 X 20	56
- 2	2	2	2	5018030-2	NUT, HEX, REG, RoHS, M4	55
- 2	2	2	2	5018030-1	NUT, HEX, REG, RoHS, M3	54
- 2	2	2	2	986965-8	NUT, LOCK, HEX, TORQUE (M4)	53
- 1	-	-	-	2119792-2	PAWL, EF, AIR	51
- 1	-	-	-	18023-9	SCR, SKT HD CAP M4 X 6.0	49
- 1	1	1	1	2119655-5	APPLICATOR BASIC ASSEMBLY, EF	46
- 1	-	-	-	2119369-1	RAM, AMP STYLE, END FEED	44
- 1	1	1	1	2079383-7	SCR, BHSC, RoHS (M8 X 25)	41
- 1	-	-	-	2119645-1	DISC, NUMBERED FA WIRE ADJUSTMENT	40
- 1	-	-	-	2119957-1	APPLICATOR SHIM PACK	39
- 1	1	1	1	2119644-4	RAM WASHER, PRECISION	38
- 1	1	1	1	2119085-1	FA HEAD, ATLANTIC STYLE	37
- 1	-	-	-	2119092-1	BOLT, ADJUSTMENT	35
- 8	8	8	8	1-18028-2	WASHER, FLAT, REG M4	33
- 2	2	2	2	2168083-9	SCR, SKT HD CAP, RoHS, M4 X 20	31
- 2	2	2	2	1-2168083-0	SCR, SKT HD CAP, RoHS, M4 X 10	29
- 1	1	1	1	240639-1	STRIPPER (MACHINING)	27
- 2	2	2	2	1320906-1	STUD, THREADED	25
- 1	1	1	1	1752371-5	PLATE, STRIP GUIDE	24
- 2	2	2	2	2-22281-3	SPRING, COMPRESSION	22
- 1	1	1	1	1752373-4	DRAG	20
- 1	1	1	1	1-1901696-0	STRIP GUIDE, REAR	19
- 1	1	1	1	1-1901695-0	STRIP GUIDE, FRONT	18
- 4	4	4	4	1-2079383-1	SCR, BHSC, RoHS (M6 X 12)	17
- 1	1	1	1	2-240641-5	SPACER	16
- 1	1	1	1	240644-1	PLATE, REAR SHEAR	11
- 1	-	-	-	-	-	10
- 1	1	1	1	690482-4	PLATE, FRONT SHEAR	9
- 1	1	1	1	2-1803000-4	ANVIL, COMBINATION, END FEED	8
- 1	1	1	1	1-2217206-2	BLADE, SLUG	7
- 1	-	-	-	-	-	6
- 1	1	1	1	2-240641-7	SPACER	5
- 1	1	1	1	238009-5	BLOCK, FL CRIMPER SPACER	4
- 1	1	1	1	6-1633961-0	CRIMPER, INSULATION F PREMIUM	3
- 1	1	1	1	455888-3	SPACER, CRIMPER	2
- 1	1	1	1	4-1633664-8	CRIMPER, WIRE	1

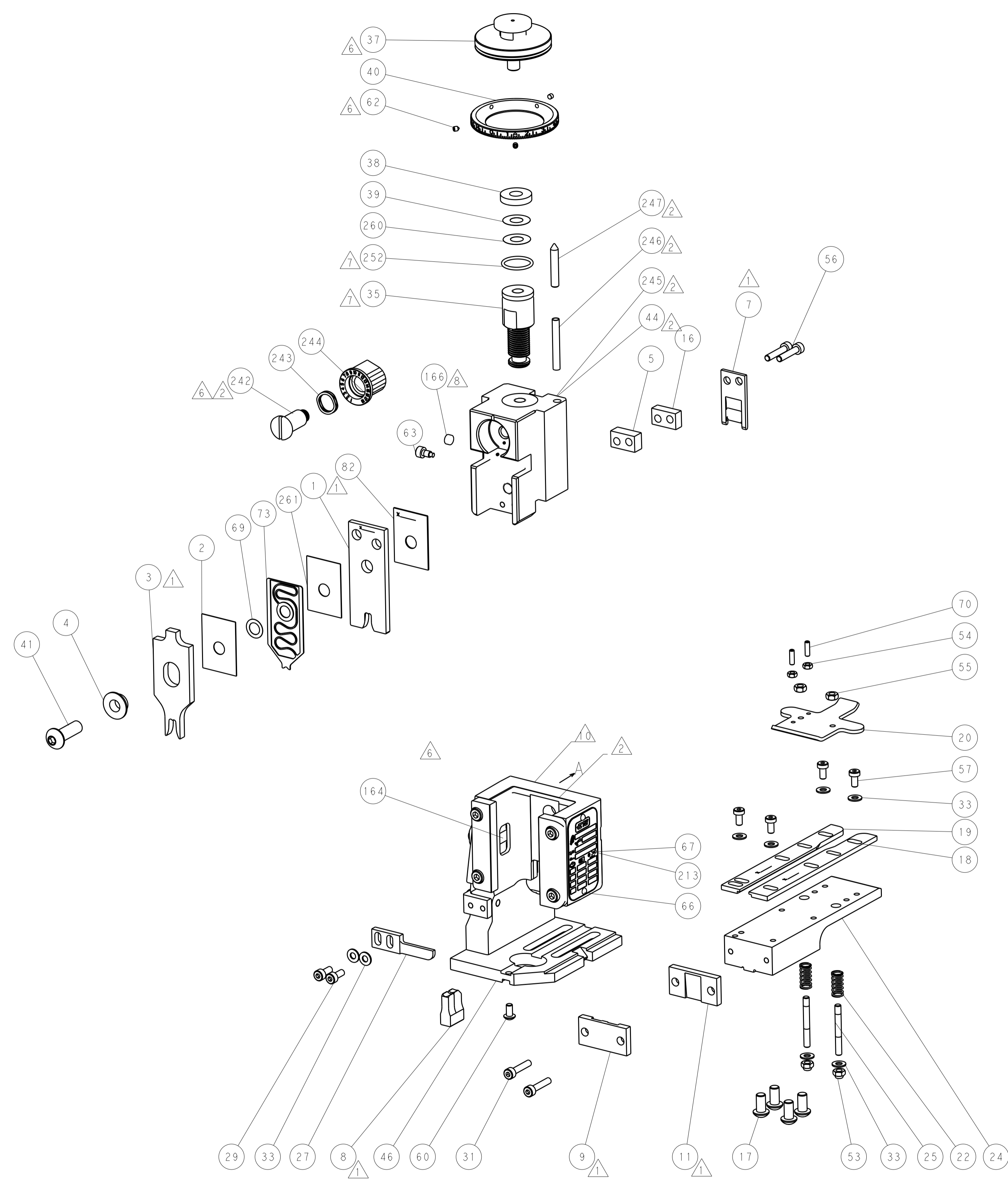
ITEM NO	QTY	DESCRIPTION	DATE	BY	APPV
- 77	- 7	- 6	- 5	- 2	PART NO
- 77	- 7	- 6	- 5	- 2	DESCRIPTION
- 77	- 7	- 6	- 5	- 2	ITEM NO

APPROVED FOR CONSTRUCTION	DATE	05DEC2012	CHK	T. YIN
APPROVED FOR CONSTRUCTION	DATE	05DEC2012	CHK	G. BAILEY
APPROVED FOR CONSTRUCTION	DATE	05DEC2012	CHK	S. XI
APPROVED FOR CONSTRUCTION	DATE	05DEC2012	CHK	G. BAILEY

DIMENSIONS:		TOLERANCES UNLESS OTHERWISE SPECIFIED:	
mm	0 PLC ±.5	1 PLC ±.5	2 PLC ±.5
	3 PLC ±.13	4 PLC ±.013	5 PLC ±.001
	ANGLES ±.0001		

MATERIAL	FINISH	WEIGHT	SCALE	1:1
			SHEET	1 OF 4
			REV	A

LOC		DIST		REVISIONS			
A	66	P	LTM	DESCRIPTION	DATE	OWN	APVD
		-	-	SEE SHEET 1	-	-	-

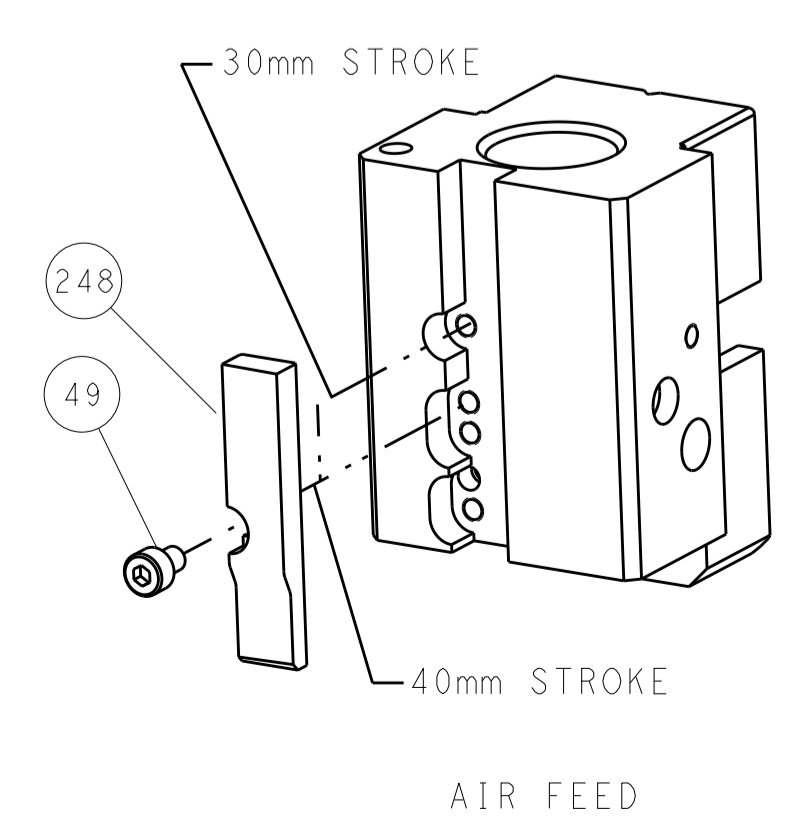


FEED TYPE

PNEUMATIC

SERVO LATCH PLATE

CAM POSITION



**ATLANTIC VERSION**  
 Shown on sheets 1 of 4 & 2 of 4  
 (Pacific version shown on sheets 3 of 4 & 4 of 4)

DIMENSIONS:		TOLERANCES UNLESS OTHERWISE SPECIFIED:		DWN T.Y. YIN 05DEC2012		TE Connectivity	
mm	0 PLC ±0.5	1 PLC ±0.5	2 PLC ±0.13	3 PLC ±0.013	4 PLC ±0.0013	ANGLES ±0.0001	FINISH
MATERIAL				CHK G. BAILEY 05DEC2012		NAME Ocean End Feed Applicator	
APVD S. XI				PRODUCT SPEC		SIZE A11 00779	
APPLICATION SPEC				WEIGHT		SCALE 1:1	
Customer Accessible Production Drawing				CAGE CODE 2150300		SHEET 2 of 4	
				REV A		RESTRICTED TO	

PACIFIC VERSION TERMINATOR INTERFACE ADAPTER	PART NUMBER	REVISION	DESCRIPTION	FEED TYPE	APPLICATOR STYLE CONVERSION CHART					
					CONVERT TO	PART NUMBERS REQUIRED				
	2-2150300-2	A	FINE CRIMP HEIGHT ADJUST	PNEUMATIC	-	-	-	-	-	-
	2-2150300-5	A	FINE CRIMP HEIGHT ADJUST	SERVO LATCH PLATE	2119951-1	1901697-1	8-2150300-5	-	-	2168400-7 (QUANTITY 2)
	2-2150300-7	A	FINE CRIMP HEIGHT ADJUST	SMART APPLICATOR	2161326-1	-	8-2150300-4	-	-	-
	2-2150300-5	A	FINE CRIMP HEIGHT ADJUST	SERVO LATCH PLATE	-	-	-	-	-	-
	2-2150300-7	A	FINE CRIMP HEIGHT ADJUST	NONE	-	-	-	-	-	-
7-2150300-7	A	CRIMP TOOLING KIT	-	-	-	-	-	-	-	-

APPLICATOR DATA		
CRIMP	SIZE	TYPE
WIRE	4.70 mm [1.85]	F
INSUL	5.50 mm [2.17]	F
APPLICATOR INSTRUCTIONS 408-10390		

TERMINAL DATA: LEAR TERMINAL		LEAR CRIMP SPECIFICATION	
TERMINAL NAME: RING TYPE CONNECT			
WIRE STRIP LENGTH 6.20-6.80 mm [1.244-.268 IN]		INSULATION DIAMETER RANGE Ø 3.80-5.10 mm [1.150-.201 IN]	
TERMINAL APPLICATION SPECIFICATION		LEAR SPEC	
TERMINALS APPLIED			
TE TERMINAL	LEAR TERMINAL	TE TERMINAL	LEAR TERMINAL
1572446-1	25233.331.011	1572446-6	25233.123.011
1572446-2	25233.331.322	1572446-7	25233.123.322
1572446-3	25233.213.004	1572446-8	25233.123.009
1572446-4	25233.213.320	1572446-9	25233.212.179
1572446-5	25233.123.014	1-1572446-0	25233.213.011

WIRE SIZE	CRIMP HEIGHT mm [INCH]	CRIMP HEIGHT REFERENCE SETTING
6.00mm2	3.10+0.17/-0.05 [1.22+ .004/-.002]	8.1
4.00mm2	2.85+0.17/-0.05 [1.12+ .004/-.002]	10.8

- RECOMMENDED SPARE PARTS
- GREASE BEARING SURFACES LIGHTLY
- LUBRICATE DAILY PER THE APPLICATOR INSTRUCTION SHEET SUPPLIED WITH THE APPLICATOR.
- APPLICATOR SPECIFIC DATA TO BE ENTERED INTO BLANK MEMORY CHIP AT ASSEMBLY. SEE BELOW FOR PART NUMBER:  
PNEUMATIC FEED WITH "SMART APPLICATOR" CONVERSION: 8-2150300-4  
SERVO FEED WITH "FINE CRIMP HEIGHT ADJUST": 8-2150300-5
- ADJUSTMENT OF THE STRIPPER MAY BE REQUIRED WHEN MOVING THE APPLICATOR BETWEEN BENCH AND LEADMAKER APPLICATIONS.
- APPLY PART NUMBER 1-23419-5 LOCTITE TO THREADS OF ITEMS 62 & 242.
- GREASE THREADS, GROOVE AND O-RING ON ITEMS 139 & 153.
- MAGNET, ITEM 166 MUST BE ORIENTED CORRECTLY IN ORDER TO PROPERLY ACTUATE THE COUNTER.
- CRIMP HEIGHT REFERENCE SETTING WAS THE SETTING USED WHEN THE APPLICATOR WAS QUALIFIED AT THE FACTORY. ADJUSTMENT MAY BE NECESSARY WHEN RUNNING APPLICATOR IN THE FIELD.
- TERMINAL PITCH NOT COMPATIBLE WITH MECHANICAL FEED.

**\*WARNING**  
ON INSTALLATION, SET WIRE DISC, ITEM 40 TO LARGEST WIRE SIZE SETTING. USE OF SETTINGS BELOW MINIMUM REQUIRED CRIMP HEIGHT SETTING WILL CAUSE DAMAGE TO CRIMP TOOLING.

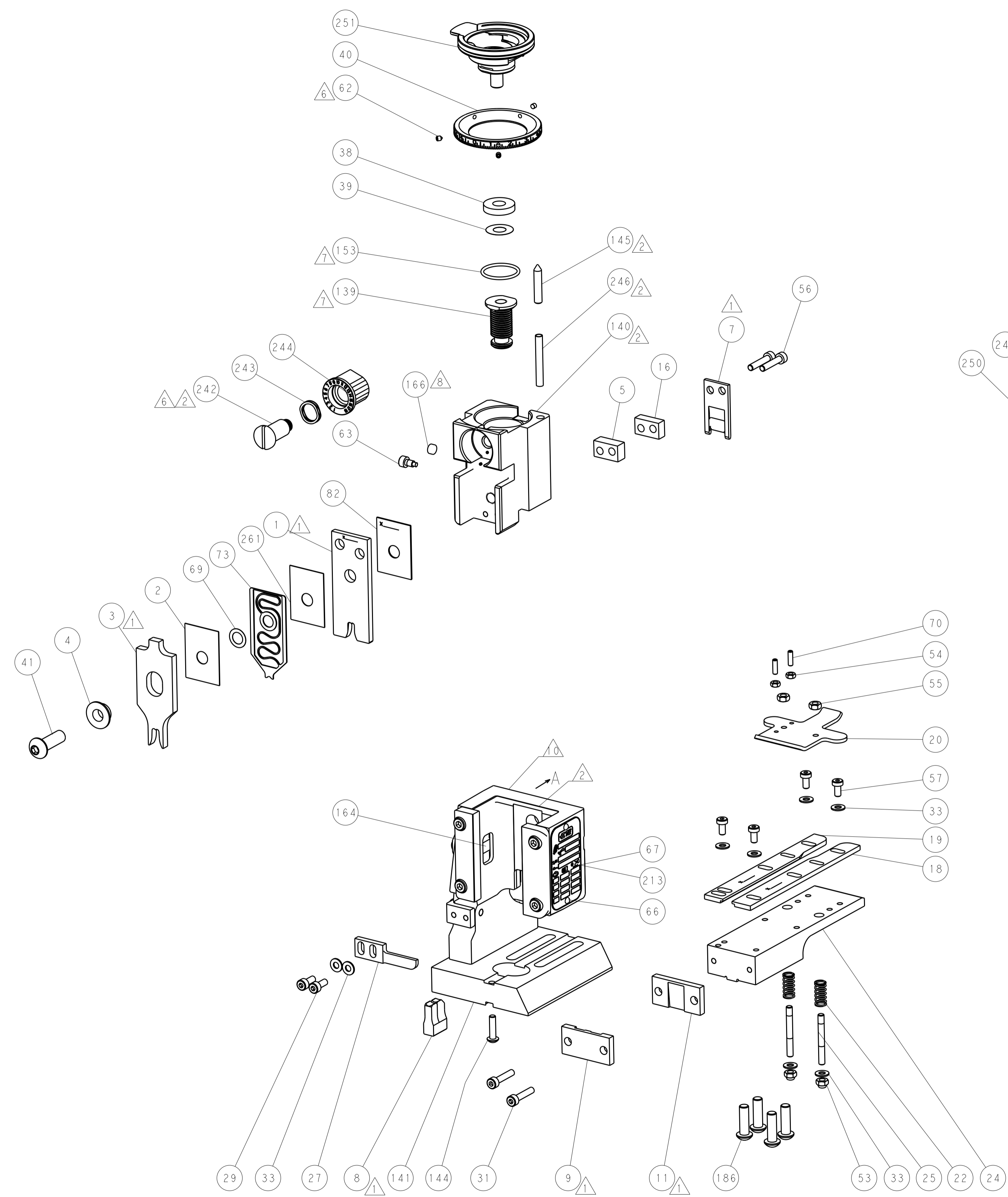
**PACIFIC VERSION**  
Shown on sheets 3 of 4 & 4 of 4  
(Atlantic version shown on sheets 1 of 4 & 2 of 4)

SET UP GAUGE	LOC	DIST	REVISIONS			
2119599-2	A	66	REV	DATE	BY	APPV
			-	SEE SHEET 1	-	-

-	1	1	1	455888-3	SPACER, CRIMPER	261	
-	1	1	1	2119782-1	FINE ADJUST HEAD ASM, PACIFIC STYLE	251	
-	-	-	1	2119640-1	PUSH ROD, AIR FEED	250	
-	-	-	1	2079988-1	BUSHING, LCH5-12, MISUMI	249	
-	1	1	1	1-22279-3	SPRING, COMPRESSION	246	
-	1	1	1	2119082-9	CAM, SNAIL, INSULATION ADJUSTMENT	244	
-	1	1	1	2079764-1	WASHER, WAVE SPRING, CREST-TO-CREST	243	
-	1	1	1	2119083-1	RETAINER, INSULATION DIAL	242	
-	-	2	-	2168400-7	SHCS, LOW HEAD, RoHS, M5 X 10	240	
-	-	-	-	2119580-1	MECHANICAL FEED ASSEMBLY	239	
-	-	-	1	2063440-2	AIR FEED MODULE	238	
-	-	1	-	2119740-2	TAG, IDENTIFICATION	213	
-	4	4	4	2079383-9	SCR, BHSC, RoHS (M6 X 20)	186	
-	-	-	REF	1901697-1	FEED FINGER ASSEMBLY, EF	183	
-	-	-	2	21045-3	RING, RETAIN, EXTERN, 3/16 CRESCENT	172	
-	1	1	1	994969-1	MAGNET, RARE EARTH HIGH ENERGY	166	
-	REF	REF	REF	994970-2	COUNTER, MAGNETIC	164	
-	-	-	1	240638-1	SPRING, FEED FINGER	163	
-	1	1	1	8-21084-1	O-RING, .801 ID, .070 DIA. MAT.	153	
-	-	-	1	2119641-2	FEED CAM, AIR FEED	152	
-	1	1	1	2119798-2	DETENT PIN	145	
-	1	1	1	2079383-8	SCR, BHSC, RoHS (M4 X 16)	144	
-	1	1	1	2119655-6	APPLICATOR BASIC ASSEMBLY, EF	141	
-	1	1	1	2119651-1	RAM, ASIAN STYLE, END FEED	140	
-	1	1	1	2119092-2	BOLT, ADJUSTMENT	139	
-	-	-	1	3-23627-7	PIN, RETAIN, GRVD, 3/16 X .854	137	
-	-	REF	-	SEE NOTE 4	MEMORY CHIP, PROGRAMMED	135	
-	-	1	-	1633743-1	SERVO FEED LATCH ASM	133	
-	1	1	1	455888-6	SPACER, CRIMPER	82	
-	1	1	1	2119791-5	DEPRESSOR, WIRE	73	
-	1	1	1	2119956-2	DOCUMENTATION PACKAGE	71	
-	2	2	2	2-18032-2	SCR, SET, FLT POINT M3 X 10.0	70	
-	1	1	1	2119943-1	WASHER, SPACER	69	
-	1	-	1	2119740-1	TAG, IDENTIFICATION	67	
-	2	2	2	2168078-1	SCREW, DRIVE, RH, RoHS	66	
-	1	1	1	2119793-1	LIMITER, ADJUSTMENT BOLT	63	
-	3	3	3	992763-5	SCR, SET, SOC, CONE POINT, M3 X 4.0	62	
-	-	-	-	2063961-1	FEED FINGER	58	
-	4	4	4	2168400-4	SHCS, LOW HEAD, RoHS, M4 X 8	57	
-	2	2	2	2168083-9	SCR, SKT HD CAP, RoHS, M4 X 20	56	
-	2	2	2	5018030-2	NUT, HEX, REG, RoHS, M4	55	
-	2	2	2	5018030-1	NUT, HEX, REG, RoHS, M3	54	
-	2	2	2	986965-8	NUT, LOCK, HEX, TORQUE (M4)	53	
-	-	-	1	2119792-2	PAWL, EF, AIR	51	
-	-	-	1	18023-9	SCR, SKT HD CAP M4 X 6.0	49	
-	1	1	1	2079383-7	SCR, BHSC, RoHS (M8 X 25)	41	
-	1	1	1	2119645-1	DISC, NUMBERED FA WIRE ADJUSTMENT	40	
-	1	1	1	2119957-1	APPLICATOR SHIM PACK	39	
-	1	1	1	2119644-4	RAM WASHER, PRECISION	38	
-	8	8	8	1-18028-2	WASHER, FLAT, REG M4	33	
-	2	2	2	2168083-9	SCR, SKT HD CAP, RoHS, M4 X 20	31	
-	2	2	2	1-2168083-0	SCR, SKT HD CAP, RoHS, M4 X 10	29	
-	1	1	1	240639-1	STRIPPER (MACHINING)	27	
-	2	2	2	1320906-1	STUD, THREADED	25	
-	1	1	1	1752371-5	PLATE, STRIP GUIDE	24	
-	2	2	2	2-22281-3	SPRING, COMPRESSION	22	
-	1	1	1	1752373-4	DRAG	20	
-	1	1	1	1-1901696-0	STRIP GUIDE, REAR	19	
-	1	1	1	1-1901695-0	STRIP GUIDE, FRONT	18	
-	1	1	1	2-240641-5	SPACER	16	
-	1	1	1	240644-1	PLATE, REAR SHEAR	11	
-	-	-	-	-	-	10	
-	1	1	1	690482-4	PLATE, FRONT SHEAR	9	
-	1	1	1	2-1803000-4	ANVIL, COMBINATION, END FEED	8	
-	1	1	1	1-2217206-2	BLADE, SLUG	7	
-	-	-	-	-	-	6	
-	1	1	1	2-240641-7	SPACER	5	
-	1	1	1	238009-5	BLOCK, FL CRIMPER SPACER	4	
-	1	1	1	6-1633961-0	CRIMPER, INSULATION F PREMIUM	3	
-	1	1	1	455888-3	SPACER, CRIMPER	2	
-	1	1	1	4-1633664-8	CRIMPER, WIRE	1	
-	77	27	25	22	PART NO	DESCRIPTION	ITEM NO

DIMENSIONS: mm 	TOLERANCES UNLESS OTHERWISE SPECIFIED: 0 PLC ±.5 1 PLC ±0.5 2 PLC ±0.13 3 PLC ±0.013 4 PLC ±0.001 ANGLES ±.0001	DWG: Y.YIN 05DEC2012 CHK: G.BAILEY 05DEC2012 APV: S.XI 05DEC2012 PRODUCT SPEC: - APPLICATION SPEC: - WEIGHT: - MATERIAL: - FINISH: -	<b>STE</b> TE Connectivity Harrisburg, PA 17105-3608 <b>NAME</b> Ocean End Feed Applicator SIZE: A1   CAGE CODE: 00779   DRAWING NO: C=2150300 RESTRICTED TO: - Customer Accessible Production Drawing   SCALE: 1:1   SHEET 3 OF 4   REV A
-----------------------	---	---	---

LOC		DIST		REVISIONS			
A	66	P	LTM	DESCRIPTION	DATE	DWN	APVD
		-	-	SEE SHEET 1	-	-	-

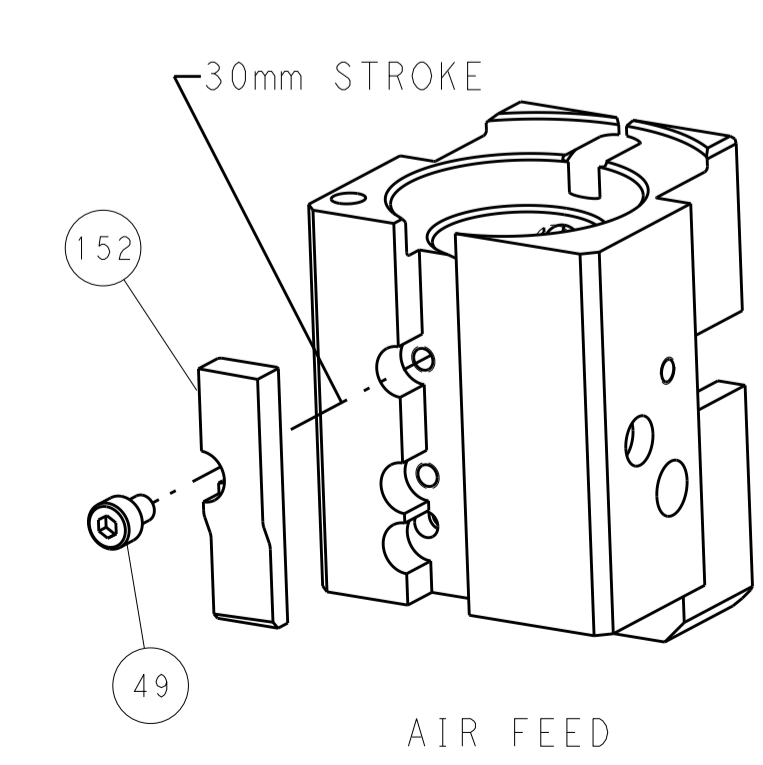


FEED TYPE

PNEUMATIC

CAM POSITION

SERVO LATCH PLATE



**PACIFIC VERSION**  
 Shown on sheets 3 of 4 & 4 of 4  
 (Atlantic version shown on sheets 1 of 4 & 2 of 4)

DIMENSIONS:		TOLERANCES UNLESS OTHERWISE SPECIFIED:		DWN T.Y. YIN 05DEC2012		STE TE Connectivity Harrisburg, PA 17105-3608	
mm	0 PLC ±0.5	1 PLC ±0.5	2 PLC ±0.13	3 PLC ±0.013	4 PLC ±0.0013	APVD S. XI 05DEC2012	NAME Ocean End Feed Applicator
MATERIAL	FINISH	WEIGHT	SCALE	SIZE	CAGE CODE	DRAWING NO.	RESTRICTED TO
			1:1	A1	00779	2150300	
Customer Accessible Production Drawing				SHEET 4 OF 4 REV A			