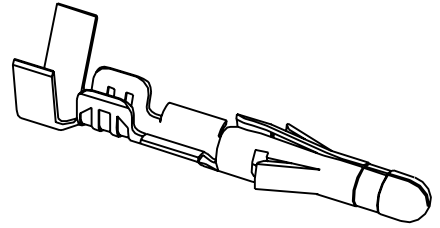
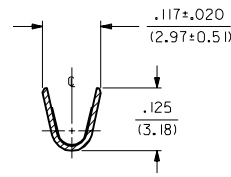
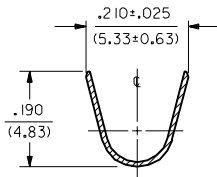
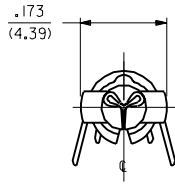
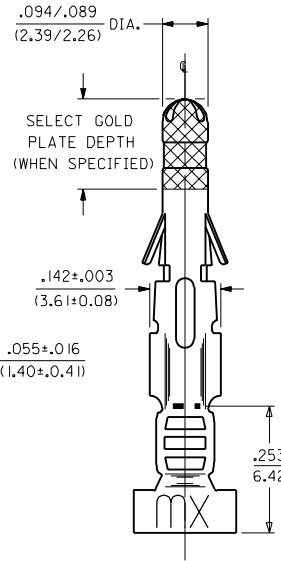
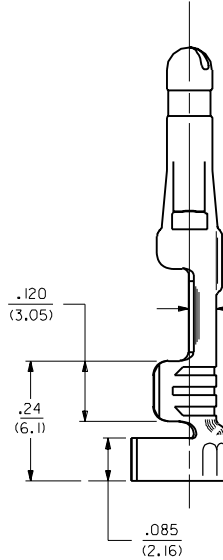
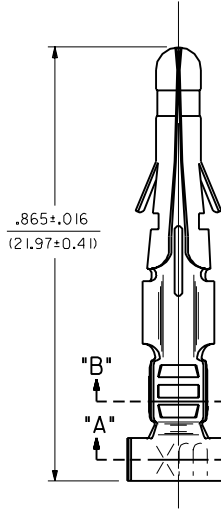


PART NO.	ENG. NO.
02-09-2103	1190-(P90)1L
02-09-2101	1190-(P90)1
02-09-2164	1190-(P914)L
02-09-2165	1190-(P914)
NOT TOOLED	1190-(563)1L
02-09-6112	1190-(563)
02-09-6110	1190-(591)L
02-09-6101	1190-(591)
02-09-6109	1190-(565)1L
02-09-6107	1190-(565)
02-09-6106	1190-(550)1L
02-09-6100	1190-(550)
NOT TOOLED	1190-(558)1L
NOT TOOLED	1190-(558)



SECT. "A-A"

SECT. "B-B"



SEE NOTE Δ

NOTES:

1. TERMINAL FOR USE WITH .093/(2.36) SERIES HOUSINGS AND WILL ACCEPT 14 THRU 20 AWG WIRE.
2. INSERTION FORCE: 3.5 LBS. MAX. WHEN TERMINAL IS INSERTED INTO AN .093 SERIES HOUSING.
3. RETENTION: 20 LBS. MIN. FROM HOUSING.
4. THIS PART CONFORMS TO PROD. SPEC. 02-09.

Δ DIMENSION FROM THE END OF THE TERMINAL TO THE END OF THE BRUSH ON THE WIRE CRIMPED INTO THE TERMINAL.

FINISH CODES:

- 901 HOT TIN DIP .000020/(0.0005) MIN.
- 914 HOT TIN-LEAD DIP .000040/(0.0010)2 MIN.
- 565 SELECT GOLD PLATE .000020/(0.0005) MIN. IN CONTACT AREA, OVER .000030/(0.00076) MIN. NICKEL OVERALL WITH .000010/(0.00025) MAX. GOLD FLASH OVERALL.
- 591 SELECT GOLD PLATE .000050/(0.00127) MIN. IN CONTACT AREA, OVER .000050/(0.00127) MIN. NICKEL OVERALL WITH .000010/(0.00025) MAX. GOLD FLASH OVERALL.
- 550 SELECT GOLD PLATE .000015/(0.00038) MIN. IN CONTACT AREA, OVER .000030/(0.00076) MIN. NICKEL OVERALL WITH .000010/(0.00025) MAX. GOLD FLASH OVERALL.
- 563 SELECT GOLD PLATE .000030/(0.00076) MIN. IN CONTACT AREA, .000100/(0.00254) MIN. TIN-LEAD IN CRIMP AREA OVER .000050/(0.00127) MIN. NICKEL OVERALL.
- 558 SELECT GOLD PLATE .000030/(0.00076) MIN. IN CONTACT AREA, OVER .000050/(0.00127) MIN. NICKEL OVERALL WITH .000010/(0.00025) MAX. GOLD FLASH OVERALL.

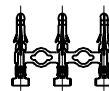
LEGEND

1190-(****)*

- FORM BLANK=CHAIN
- L=LOOSE
- P=PREPLATE
- BLANK=POSTPLATE
- FINISH CODE

MATERIAL:

CARTRIDGE BRASS, ALLOY #C26000, .010/(0.25) THICK, SPRING TEMPER.



CHAIN FORM FULL SCALE

REV.	DATE	DESCRIPTION
BR3	3/1/00	REVISED UCR2000-0583 DDS
BR2	10/26/97	REVISED UCR 1999-0518 STAMBAUGH 99-2-9
BR1	1-4-91	ADDED ISO VIEW UCR 1998-0248 WANG 98-05-20
BR		CARRIER CUTOFF ECN #U1 0223
BP		REV. & REDRAWN ECR 10480 SEP 10-26-87 RW

DIMENSIONS SHOWN METRIC (INCH)		UNLESS OTHERWISE SPECIFIED TOLERANCES ANGULAR ± 1/2°		REVISE ONLY ON CAD SYSTEM	
INCH	METRIC	FILE NAME	DRWG. NO.	TITLE	
3 PLACE ± .010	---	SD1190X1	SD-1190-*	CRIMP TERMINAL, MALE	
2 PLACE ± .014	± 0.25			.093/(2.36) DIA.	
1 PLACE ---	± 0.35			FOR 14 THRU 20 AWG WIRE	
DRAFT WHERE APPLICABLE MUST REMAIN WITHIN DIMENSIONS		MOLEX INCORPORATED		SHEET NO. DATE	
		LITTLE ROCK, AR 60532 U.S.A.		1 OF 1 10/26/87	
DRWG. BY: CEP		DRWG. BY: RW		SEE CHART	
APP'D: RAS		SCALE: 6:1		DIV: CP	