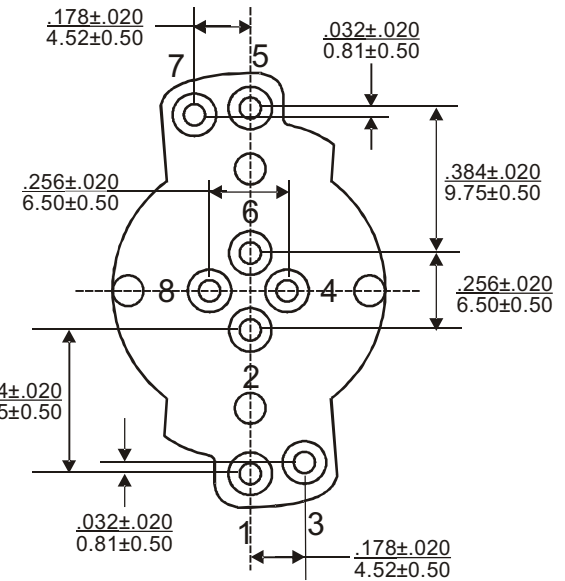
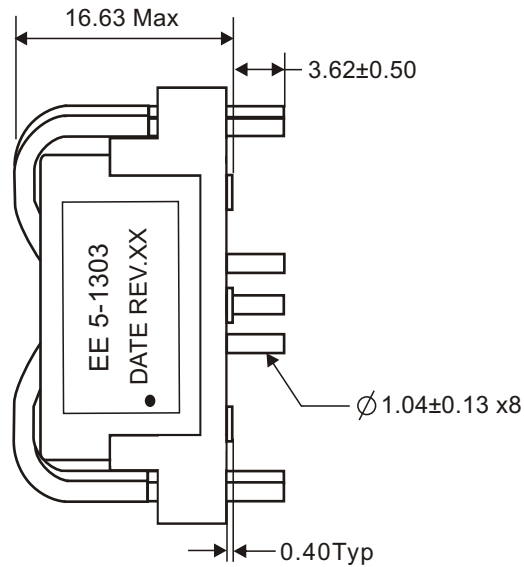
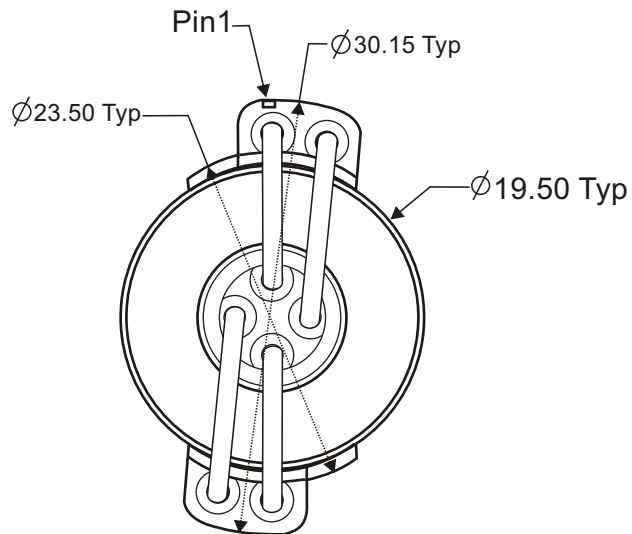


REVISIONS			
REV.	DESCRIPTION	ECN NO.	DATE
01	FIRST RELEASE FOR RFQ#A2014-13505	N/A	08/21/14

Medical  
Application

PAGE 4 IS FOR INTERNAL USE ONLY

PART NUMBER		PART DESCRIPTION		TITLE										
835-01303F		RoHS compliant per EU Directive 2011/65/EU		PXFM, T CORE, 750nH, TH, 8PIN										
<p><b>WARNING !</b></p> <p>ALL SHEETS OF THIS DOCUMENT ARE CONTROLLED DOCUMENTATION AND ARE NOT TO BE RELEASED OUTSIDE OF E&amp;E OR ITS SUB-CONTRACTORS WITHOUT AUTHORIZATION.</p>		UNLESS OTHERWISE SPECIFIED, DIMENSIONS ARE IN INCH/mm.		E & E Magnetic Products Ltd.										
		APPROVALS		DATE										
		DRAWN BY		T.LIU		08/21/14								
		PROJ. ENG		S. HONG		08/21/14								
		APPROVED BY		J. YANG		08/21/14								
TOLERANCE ARE:		Q.A.		835-01303F										
<table border="0"> <tr> <td>INCH</td> <td>mm</td> <td>ANGLE</td> </tr> <tr> <td>.XXX ± .005</td> <td>.XX ± .13</td> <td>X.X ± 0.3</td> </tr> <tr> <td>.XX ± .02</td> <td>.X ± .5</td> <td>X. ± 1</td> </tr> </table>		INCH	mm	ANGLE	.XXX ± .005	.XX ± .13	X.X ± 0.3	.XX ± .02	.X ± .5	X. ± 1	D.LUO		08/21/14	
INCH	mm	ANGLE												
.XXX ± .005	.XX ± .13	X.X ± 0.3												
.XX ± .02	.X ± .5	X. ± 1												
DRAWING NO./MODEL		SCALE		REV										
835-01303F		DO NOT SCALE		01										
PAGE 1 OF 4														



(Bottom View)

## MECHANICAL OUTLINE

1. Dimensions are specified in mm.
2. Unless otherwise specified, all tolerance are  $\pm 0.25$ .
3. "(DATE)" includes at least the manufacturing date code(in YYWW format) plus manufacturing site code. REV.XX is the revision of ES drawing.
4. Customer's part No. is 9140-000013 with version 02.



E & E Magnetic Products Ltd.

DRAWING NO./MODEL

835-01303F

REV

01

SCALE

DO NOT SCALE

PAGE

OF

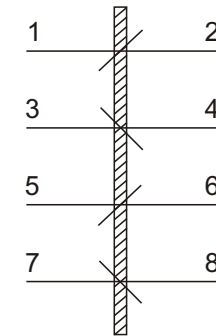
2

OF

4

**ELECTRICAL SPECIFICATION @23°C:**

PARAMETERS	UNIT	LIMITS
Turns Ratio (1-2):(3 - 4):(5-6):(7-8)	-	1 : 1 : 1 : 1 ± 1%
Polarity	-	Per Schematic
Ls (Each Winding)@100kHz,0.1Vrms	nH	750 TYP
Impedance (Each Winding) @25MHz	Ω	45 TYP
Impedance (Each Winding) @100MHz	Ω	82 TYP
DCR (Each Winding)	mΩ	1.0 TYP
HIPOT (Core) : (All windings)@0.5mA, 1 second	Vdc	2000




**SCHEMATIC**

5. Operating temperature range: -10° C to +105° C. The part temperature (ambient temperature + temperature rise) should not exceed the upper limit of the operating temperature under worst case operating conditions. Circuit design, component placement, PWB trace size and thickness, airflow and other cooling provisions all affect the part temperature. Part temperature should be verified in the end application.

6. Construction.

1. Toroidal core= FAIR-RITE 2643800502.
2. Windings: Sn-plated wire: AWG18#. The wire must be sleeved by heat shrinkable tube.
3. Windings are to be installed at 4 places as shown in the schematic.
4. Winding and core are to be secured to the carrier using A dip sealant or equivalent.

 <b>E &amp; E Magnetic Products Ltd.</b>	
DRAWING NO./MODEL	REV
<b>835-01303F</b>	<b>01</b>
SCALE	PAGE OF
<b>DO NOT SCALE</b>	<b>3 OF 4</b>