

BAND PASS FILTER

MODEL FNS-450

OPTIMIZED BANDWIDTH

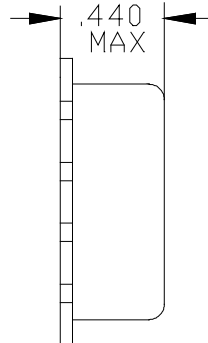
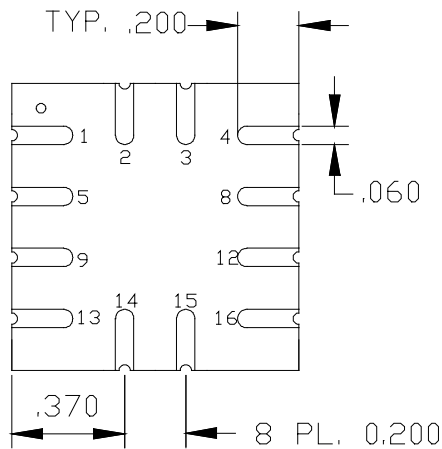
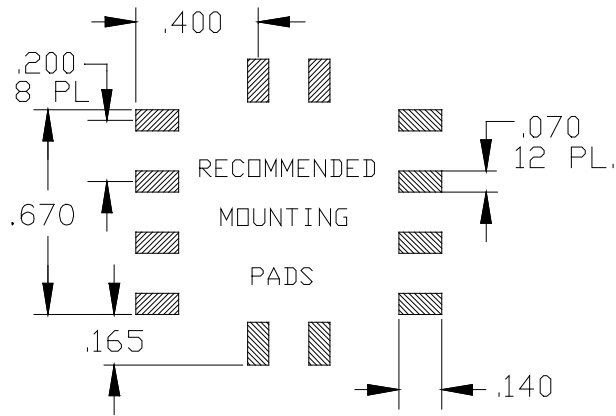
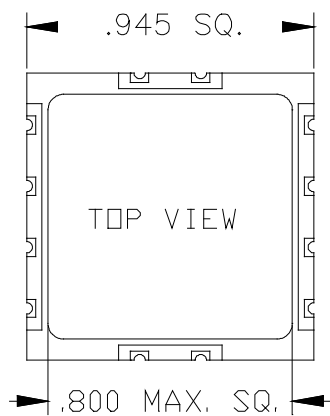
Fc = 450 MHz

SPECIFICATIONS:

Center Frequency:	450 MHz	Input Power	1 Watt (Max)
Passband:	428.6 - 472.5 MHz	Impedance:	50 Ohms (Nom)
Passband I. Loss:	3.0 dB (Max)	VSWR:	1.5:1 (Typ)
35 dB Bandwidth:	214.3 - 945 MHz	Operating Temp. Range:	-20° to +70° C



MECHANICAL OUTLINE:124S



PIN-OUT	
Input	1
Output	16
Case Ground	All Others

BAND PASS FILTER MODEL FNS-450

OPTIMIZED BANDWIDTH

$F_c = 450$ MHz

PERFORMANCE PLOTS

