

80-LCVH Series

Constant Voltage Mode



FEATURES:

- AC Input 100-277VAC
- Built-in Active PFC Function
- Protection: SCP / OVP / OTP / OCP
- High Operating Ambient Temp: -30°C~+70°C
- Surge protection: L-N 2KV, L-FG/N-FG 4KV
- Safety: UL 60950 / PSE / CB
- EMI: FCC Part 15 Class B / CE
- IP 67 Compliant
- Warranty: 5 years (refer to warranty policy)
- RoHS Compliant

PRODUCT SPECIFICATION

MODEL	DC OUTPUT POWER (W)	DC OUTPUT VOLTAGE (V)	OUTPUT CURRENT (A)	OUTPUT VOLTAGE TOLERANCE	EFFICIENCY (Typ.)				Power Factor (Typ.)			
					100VAC	120VAC	200VAC	277VAC	100VAC	120VAC	200VAC	277VAC
LCVH-080U080	80	8	10	±5%	80.0%	82.0%	83.0%	83.0%	0.98	0.98	0.95	0.92
LCVH-080U120	80.4	12	6.7	±5%	85.0%	86.0%	87.0%	87.0%	0.98	0.98	0.95	0.92
LCVH-080U240	81.6	24	3.4	±5%	85.0%	86.0%	88.0%	88.0%	0.98	0.98	0.95	0.92
LCVH-080U300	81	30	2.7	±5%	88.0%	88.0%	89.0%	89.0%	0.98	0.98	0.95	0.92
LCVH-080U360	82.8	36	2.3	±5%	88.0%	89.0%	90.0%	90.0%	0.98	0.98	0.95	0.92
LCVH-080U420	79.8	42	1.9	±5%	88.0%	89.0%	90.0%	90.0%	0.98	0.98	0.95	0.92
LCVH-080U480	81.6	48	1.7	±5%	88.0%	89.0%	90.0%	90.0%	0.98	0.98	0.95	0.92

Input Specifications

	Min.	Typ.	Max.	Units	Conditions/Description
Input Voltage Range	90		305	Vac	
Input Frequency Range	47		63	Hz	
Input Current		1		A	100VAC in
Inrush Current			65	A	230VAC in, 25°C Cold start
Leakage Current			0.45	mA	230VAC in
Power Factor (PF)	0.9				
Total Harmonics Distortion (THD)		N/A		%	100-277VAC, 100% load

Output Specifications

	Min.	Typ.	Max.	Units	Conditions/Description
Line Regulation			±3	%	
Load Regulation			±3	%	
Output Voltage Regulation			±5	%	
Ripple and Noise (pk-pk)			0.5	V	20MHz Bandwidth. See note (3)
Turn-on Delay Time			2	s	*Measured at 100-277VAC and at full load

Protection Functions

	Min.	Typ.	Max.	Units	Conditions/Description
Short Circuit Protection					Auto recovery
Over Voltage Protection					Latching, See individual models OVP levels
Over Current Protection			160%	Io	Auto recovery
Over Temp Protection (Tc)		95		°C	Latching, re-power on to recover

Environmental Conditions

	Min.	Typ.	Max.	Units	Conditions/Description
Operating Temperature (Ta)	-30		70	°C	Non-condensing
Operating Humidity	10		90	%RH	Non-condensing
Operating Case Temperature (Tc)			90	°C	Case temperature measured at the case hot spot Measured at 100Vac, Ta 70°C
Storage Temperature	-40		80	°C	Non-condensing
Storage Humidity	10		95	%RH	Non-condensing
Life Time	Measured at 277Vac, 45,000 hours at Tc 75°C .				
Dimensions(L*W*H)	208.4 * 72 * 38.5 mm 8.2 * 2.83 * 1.52 inch				
Weight		1000		g	

80-LCVH Series

Constant Voltage Mode

EMC Compliance and Safety			
EMC Compliance			
Conducted and Radiated Emission	EN 55015 (CISPR15) , FCC Part 15 Class B		
Harmonic Current Emissions	EN 61000-3-2 Class C		
Voltage Fluctuations & Flicker	EN 61000-3-3		
EMS Standards	Electrostatic Discharge (ESD)	IEC 61000-4-2	8 KV air discharge, 4 KV contact discharge
	RF Electromagnetic Field Susceptibility	IEC 61000-4-3	
	Electrical Fast Transient	IEC 61000-4-4	
	Surge Immunity	IEC 61000-4-5	L-N 2KV, L-FG/N-FG 4KV
	Conducted RF Disturbances	IEC 61000-4-6	
	Power Frequency Magnetic Field	IEC 61000-4-8	
	Voltage Dips	IEC 61000-4-11	
Safety			
UL	UL 60950		
PSE	PSE		
CB	IEC 61347-2-13 , IEC 61347-1		

Notes

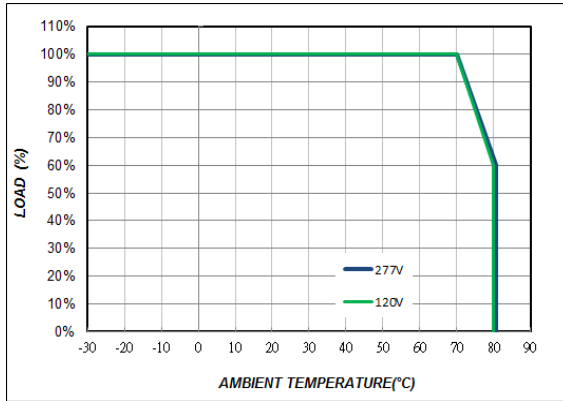
- (1) All parameters not specially mentioned are measured 230VAC input.
- (2) All specifications Typical @25°C , unless otherwise noted, at normal line and load.
- (3) Ripple and Noise measured directly at pins/terminals at nom. load, 0.1uF bypass and 47uF electrolytic, pk-pk @20MHz bandwidth.
- (4) Specified for free-air convection cooling.
- (5) Operating in minimum load is not proper requirement

* REFERENCE: www.linkcom.com.tw

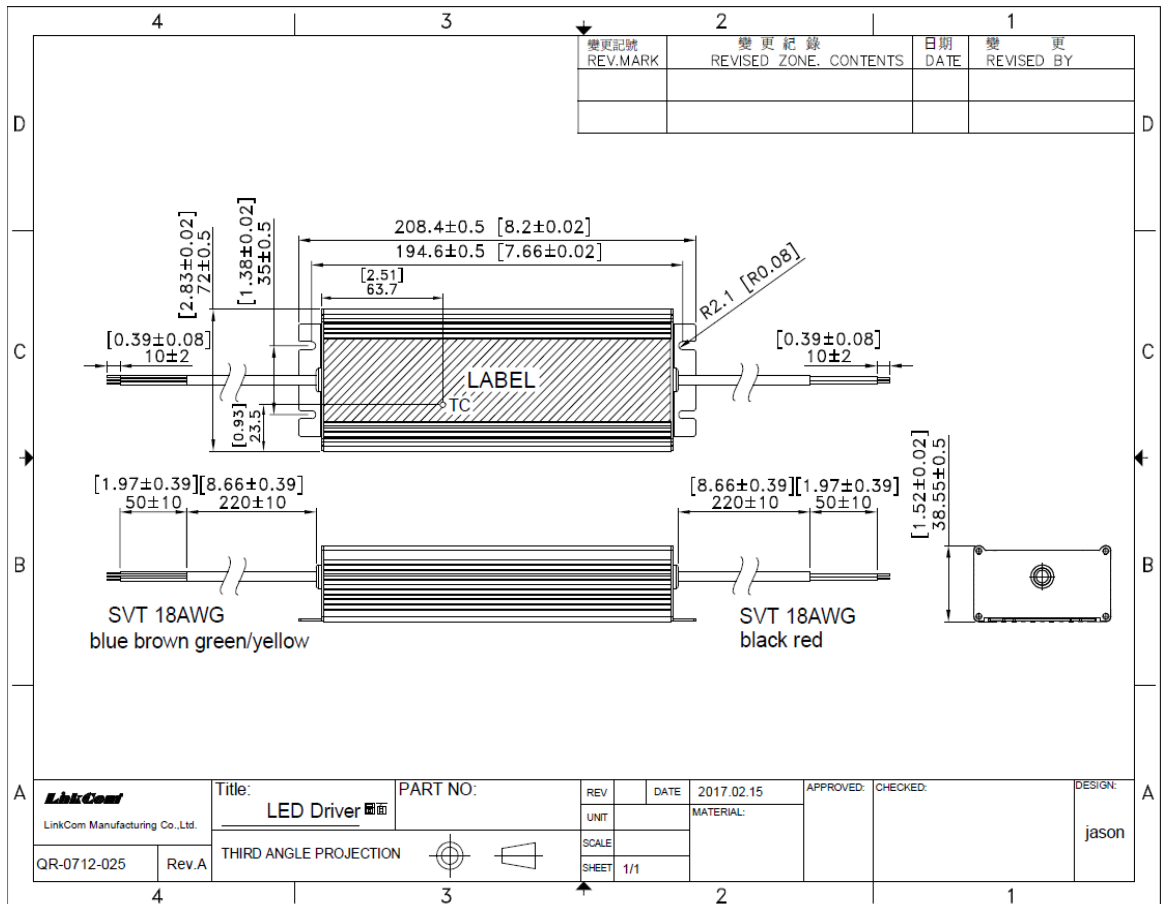
* Please contact sales@linkcom.com.tw, sales@linkcomusa.com for more information

80-LCVH Series

DERATING CURVE



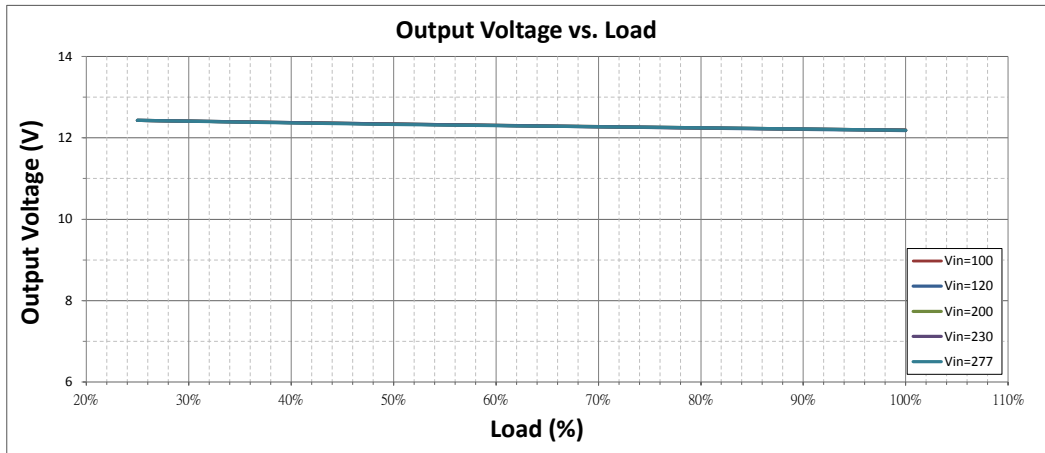
DIMENSIONS



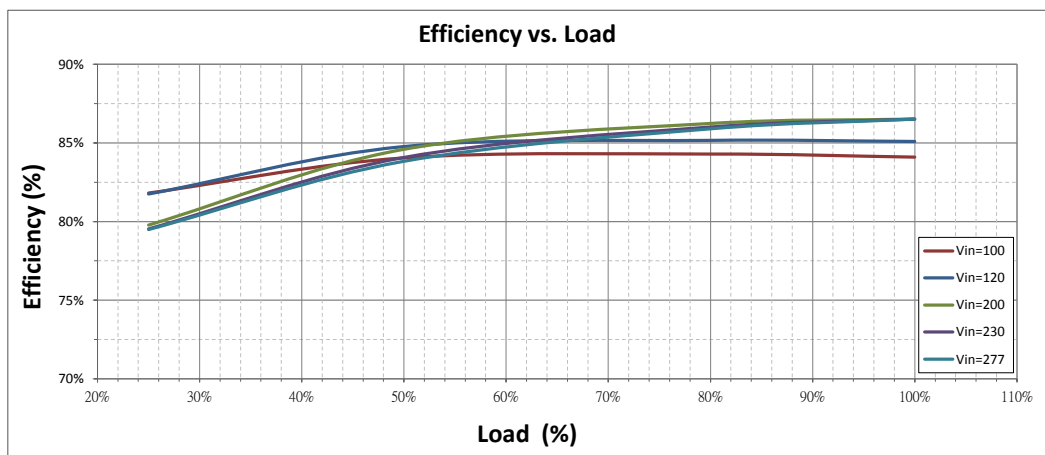
* REFERENCE: www.linkcom.com.tw

80-LCVH Series

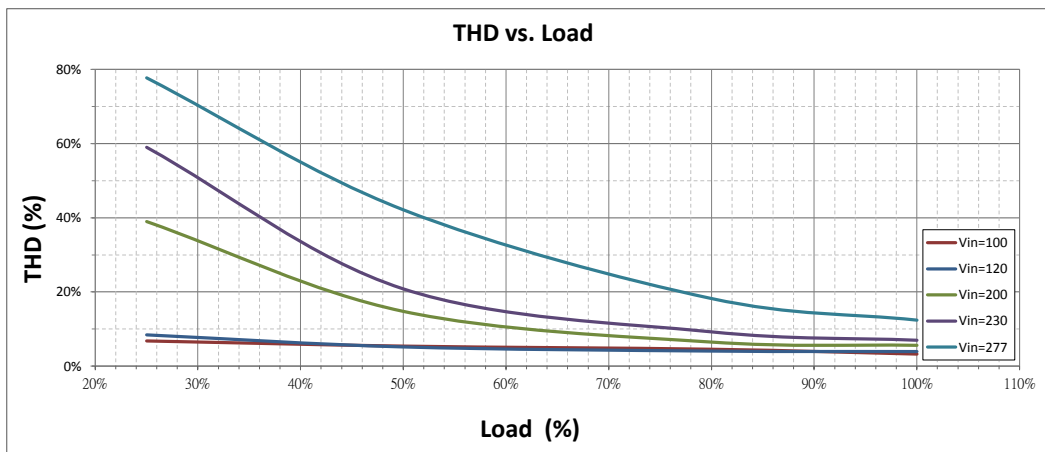
Output Voltage vs. Load (LCVH-080U120)



Efficiency vs. Load (LCVH-080U120)



THD vs. Load (LCVH-080U120)



80-LCVH Series

Constant Voltage Mode

PF vs. Load (LCVH-080U120)

