

CBO, CCK, CCL SERIES LIFT TRUCK FUSES

32-125 Vdc • 1-300 A • Fast Acting & Time Delay



Specifications

Voltage Ratings: CBO: 32 Volts DC
CCK: 125 Volts DC (1-300A)
CCL: 125 Volts DC

Ampere Range: 1 – 300 amperes

Interrupting Rating: 10,000 A
For operating characteristics contact factory

Ordering Information

Description

CBO fast acting, and CCK and CCL dual-element time-delay fuses are recommended for fork lift trucks and other similar battery operated equipment.

Applications

Lift trucks, scissor lifts, pallet movers, and other low voltage battery operated equipment used to move hazardous materials.

Dimensions (inches)

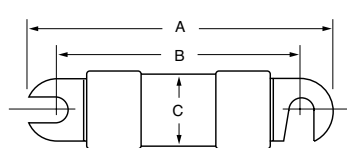
PART NO.	A	B	C
CCK 1-30A	3.070	2.500	0.56
CCK 35-60A	3.740	3.000	0.81
CCK 70-100A	4.460	3.500	1.06
CCK 120-200A	4.720	3.750	1.06
CCK 225-300A	4.710	3.750	1.06
CCL 30-60A	3.07	2.5	0.56
CCL 80-120A	3.49	2.75	0.81

AMPERE RATINGS CBO FAST ACTING (32 Vdc)				
10	25	20	80	—
12	30	60	100	—
15	35	70	125	—
20	40	75	150	—

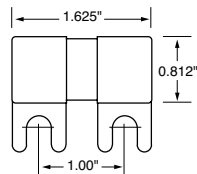
AMPERE RATINGS CCK TIME-DELAY (125 Vdc)					
1	20	40	75	140	200
2	25	50	80	150	225
10	30	60	100	160	250
15	35	70	120	175	300

AMPERE RATINGS CCL TIME-DELAY (125 Vdc)				
30	40	60	100	—
35	50	80	120	—

SERIES	TYPE	VOLT DC	AMP	CATALOG NUMBER	ORDERING NUMBER
CBO	FAST ACTING	32	10	CBO010	OCBO010.V
CCK	TIME-DELAY	125	120	CCK120	OCCK120.V
CCL	TIME-DELAY	125	120	CCL120	OCCL120.V



CCK/CCL



CBO