

## Printed-circuit board connector - PTSM 0,5/ 3-HHI-2,5-THR R32 - 1815060

Please be informed that the data shown in this PDF Document is generated from our Online Catalog. Please find the complete data in the user's documentation. Our General Terms of Use for Downloads are valid (<http://phoenixcontact.com/download>)



Header, Nominal current: 6 A, Rated voltage (III/2): 200 V, Number of positions: 3, Pitch: 2.5 mm, Color: black, Contact surface: Tin, Assembly: Taped SMD/THT/THR components



### Key commercial data

Packing unit	1 pc
Minimum order quantity	500 pc
Weight per Piece (excluding packing)	1.64 GRM
Custom tariff number	85369010
Country of origin	Germany

### Technical data

#### Dimensions

Pitch	2.5 mm
Dimension a	5 mm
Pin dimensions	0,6 x 0,4 mm
Hole diameter	1 mm

#### General

Range of articles	PTSM 0,5/..-HHI-THR
Insulating material group	IIIa
Rated surge voltage (III/3)	2.5 kV
Rated surge voltage (III/2)	2.5 kV
Rated surge voltage (II/2)	2.5 kV
Rated voltage (III/3)	63 V
Rated voltage (III/2)	200 V
Rated voltage (II/2)	200 V
Nominal current $I_N$	6 A

# Printed-circuit board connector - PTSM 0,5/ 3-HHI-2,5-THR R32 - 1815060

## Technical data

### General

Maximum load current	6 A
Insulating material	LCP
Inflammability class according to UL 94	V0
Color	black
Number of positions	3

## Classifications

### eCl@ss

eCl@ss 4.0	27141109
eCl@ss 4.1	27141109
eCl@ss 5.0	27141190
eCl@ss 5.1	27141190
eCl@ss 6.0	27261101
eCl@ss 7.0	27440401
eCl@ss 8.0	27440402

### ETIM

ETIM 3.0	EC001121
ETIM 4.0	EC002643
ETIM 5.0	EC002637

### UNSPSC

UNSPSC 6.01	30211801
UNSPSC 7.0901	39121432
UNSPSC 11	39121432
UNSPSC 12.01	39121432
UNSPSC 13.2	39121432

## Approvals

### Approvals

---

#### Approvals

GOST / UL Recognized

---

#### Ex Approvals

# Printed-circuit board connector - PTSM 0,5/ 3-HHI-2,5-THR R32 - 1815060

## Approvals

Approvals submitted

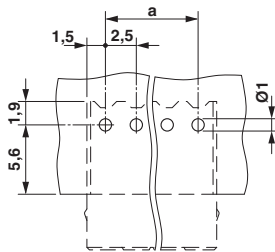
## Approval details



UL Recognized	
	B
Nominal current $I_N$	5 A
Nominal voltage $U_N$	150 V

## Drawings

Drilling diagram



Dimensioned drawing

