



FEATURES:

- AC Input 90~305 Vac Nominal
- Built-in Active Power Factor Correction
- Protection: SCP / OVP / OTP / OCP
- High Operating Ambient Temp.: -30 °C ~ +50 °C
- Surge Protection: L-N 6 kV
- Safety: UL
- EMI: FCC / Meets CE
- Comply with Indoor/Outdoor Waterproof (IP 67)
- Warranty: 5 years (refer to LinkCom warranty policy)
- RoHS Compliant

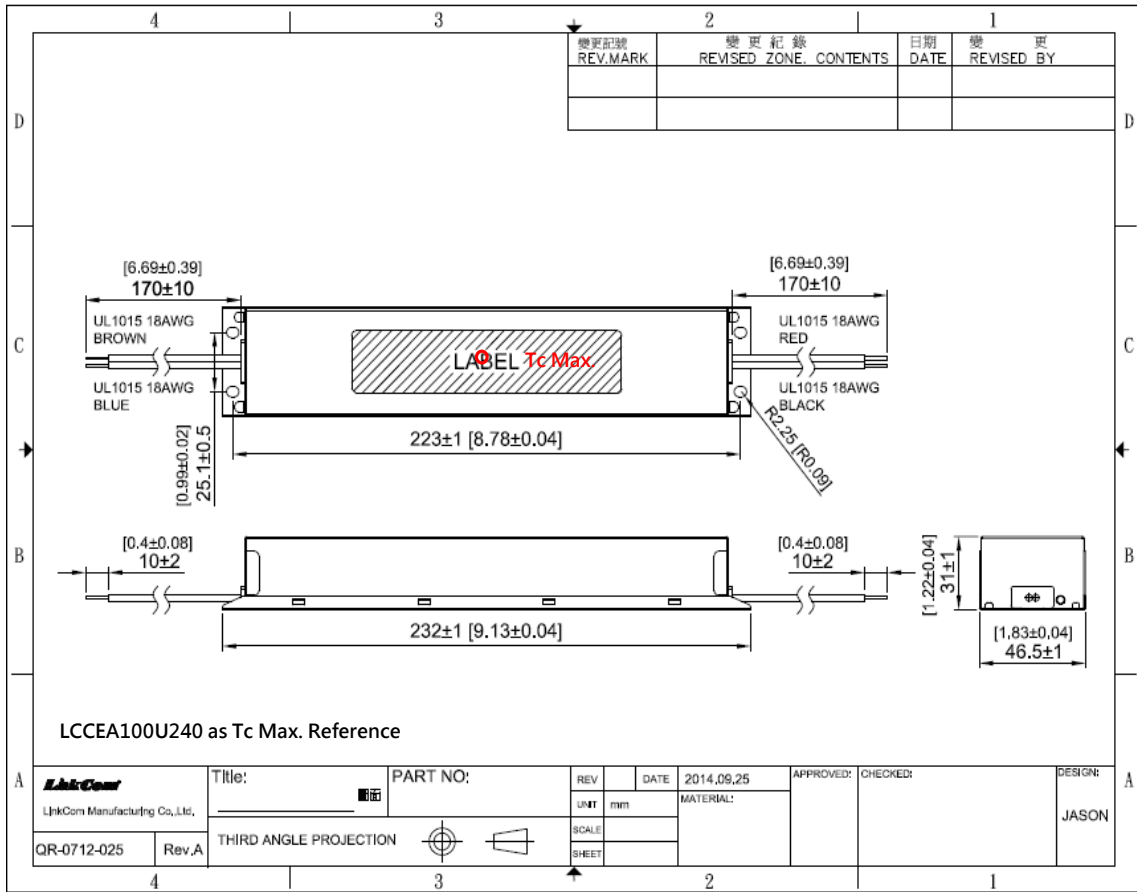
PRODUCT SPECIFICATION						
MODEL	DC OUTPUT POWER(W)	DC OUTPUT VOLTAGE(V)	OUTPUT CURRENT(A)	OUTPUT CURRENT TOLERANCE	EFFICIENCY	O/P NOISE(P-P, V)
LCCEA100U240-00	96	18-24	4	±3%	88%	1% Vo(max.)
LCCEA100U360-00	96	28-36	2.7	±3%	88.5%	1% Vo(max.)
LCCEA100U420-00	96	32-42	2.3	±3%	89%	1% Vo(max.)
LCCEA100U480-00	96	36-48	2	±3%	89%	1% Vo(max.)

ELECTRICAL SPECIFICATION	
INPUT VOLTAGE RANGE	90-305 Vac, 127-431 Vdc, Normal: 100-277 Vac
INPUT FREQUENCY	Range: 47-63 Hz, Normal: 50-60 Hz
ACTIVE POWER FACTOR	> 0.9 @ Full Load 100-277 Vac
THD	< 20% at 80%-Full Load 100-277 Vac
TURN ON DELAY TIME	< 1s at Full Load 100-277 Vac
AC CURRENT	1.5 A / 100 Vac 0.6 A / 277 Vac
INRUSH CURRENT (Max.)	Cold Start 65 A @ 230 Vac
LEAKAGE CURRENT	< 0.75 mA
SHORT CIRCUIT PROTECTION	SCP and OVP will restart automatically after the fault condition is removed
OVER VOLTAGE PROTECTION	
OVER TEMP. PROTECTION	shut down and latch off o/p voltage , re-power on to recover
OVER CURRENT PROTECTION	120%~160% rated output power ; Hiccup mode
OPERATING TEMP.	-30 °C ~ +50 °C @ Full Load 100-277 Vac
STORAGE TEMP.	-40 °C ~ +80 °C
RELATIVE HUMIDITY	10% to +90%, non-cond.
SAFETY	UL 8750
EMI	FCC Part15 / Meets EN55015
WITHSTAND VOLTAGE	I/P-O/P: 3.75 kVac, O/P-Grnd: 0.5 kVac, I/P-Grnd: 1.88 kVac
ISOLATION RESISTANCE	I/P-O/P, I/P-FG,O/P-FG :100M Ω / 500 Vdc / 25°C / 70% RH
DIMENSION (L*W*H)	232 * 46.5 * 31 mm 【9.13 * 1.83 * 1.22 inch】

- (1) All parameters specified at 230 Vac input unless otherwise noted.
- (2) All specifications Typical @25°C, unless otherwise noted, at normal line and load.
- (3) Ripple and Noise measured directly at pins/terminals at nom. load, 0.1uF bypass and 47uF electrolytic, pk-pk @20MHz bandwidth.
- (4) Specified for free-air convection cooling.
- (5) Minimum load is NOT required for proper operation .
- (6) 100% Production Tested.

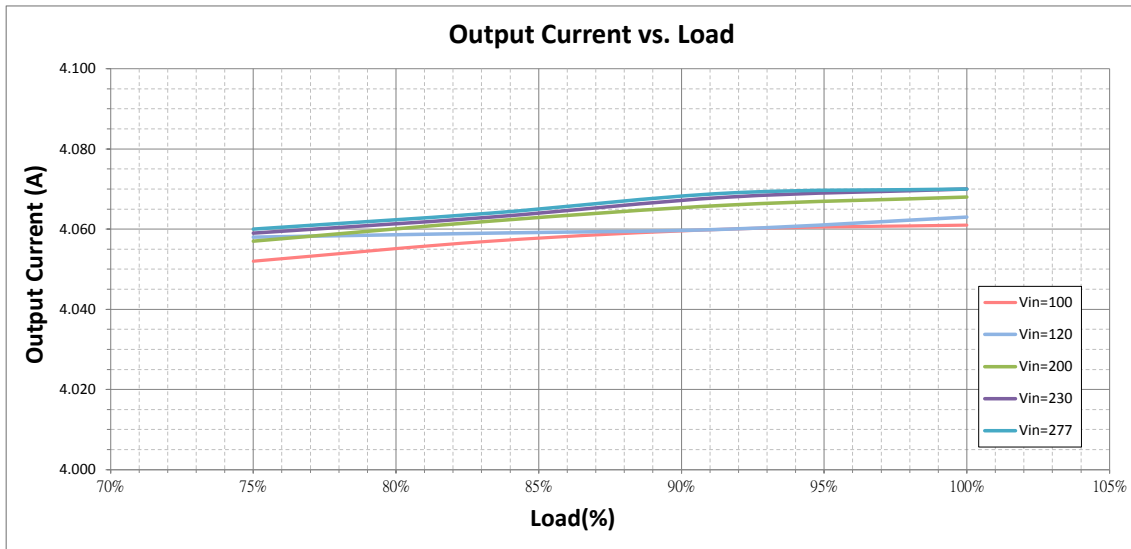
* REFERENCE: www.linkcom.com.tw
 * Please contact sales@linkcom.com.tw, sales@linkcomusa.com for more information

DIMENSIONS

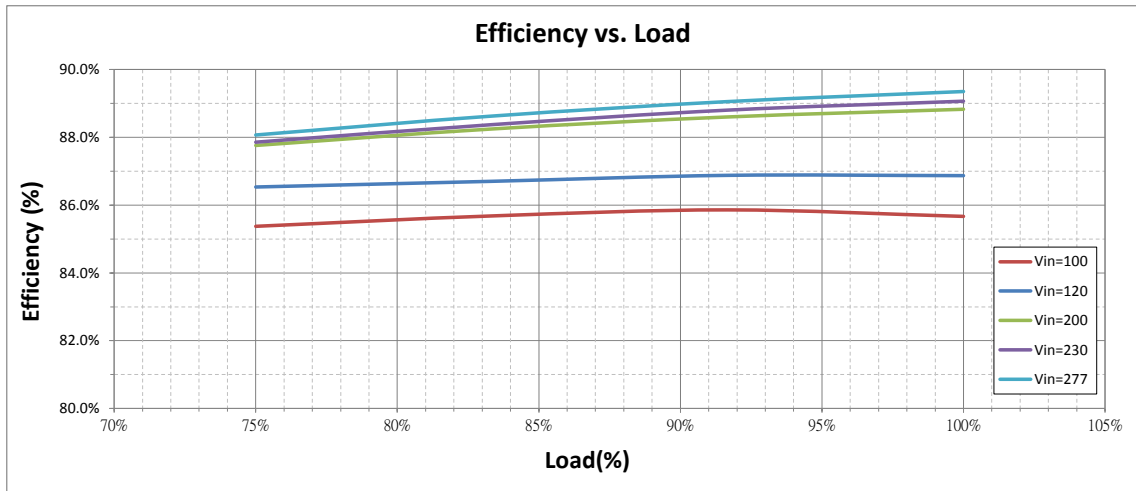


* REFERENCE: www.linkcom.com.tw

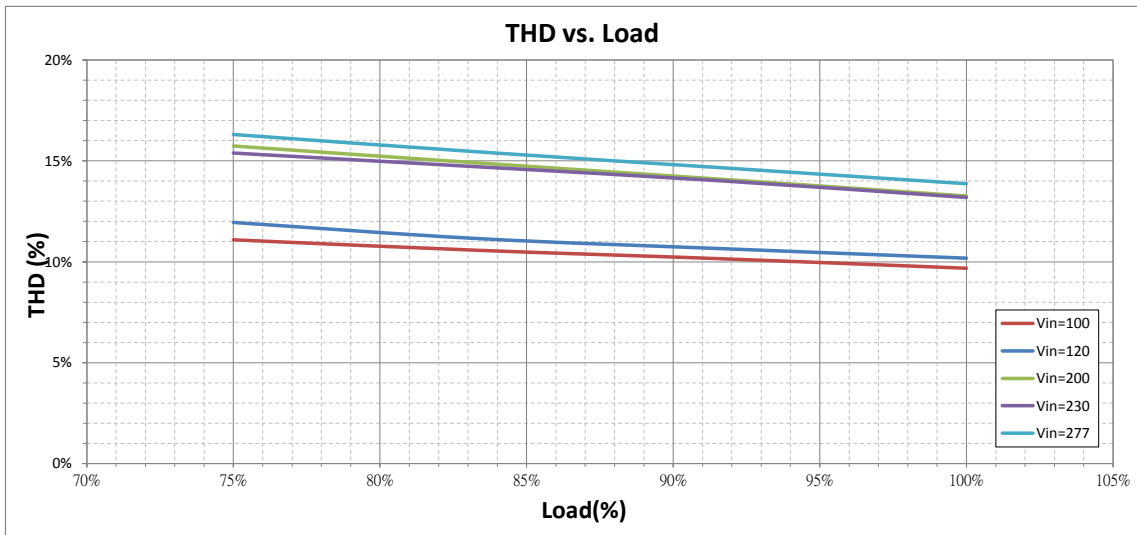
Output Current vs. Load(LCCEA100U240-00)



Efficiency vs. Load(LCCEA100U240-00)



THD vs. Load(LCCEA100U240-00)



Power Factor vs. Load(LCCEA100U240-00)

