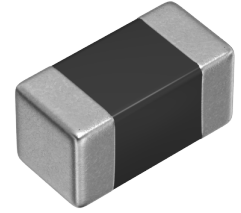


MLJ1005WR14JT000



<b>Applications</b>	Commercial Grade
<b>Feature</b>	<span style="border: 1px solid green; padding: 2px;">Shield</span> Magnetic Shield <span style="border: 1px solid red; padding: 2px;">Multilayer</span> Multilayer <span style="border: 1px solid gray; padding: 2px;">Ferrite Core</span> Ferrite Core
<b>Series   Type</b>	ML□
<b>Status</b>	Production
<b>Brand</b>	TDK



Size	
Length(L)	1.00mm ±0.05mm
Width(W)	0.50mm ±0.05mm
Thickness   Height	0.50mm ±0.05mm
Recommended Land Pattern (A)	0.50mm Nom.
Recommended Land Pattern (B)	0.40mm Nom.
Recommended Land Pattern (C)	0.50mm Nom.

Electrical Characteristics	
Inductance	140nH ±5% at 25MHz
Rated Current (L Change) [Typ.]	450mA (10% Down)
Rated Current (L Change) [Max.]	380mA (10% Down)
Rated Current (Temperature Rise) [Typ.]	
Rated Current (Temperature Rise) [Max.]	450mA (25°C Rise)
DC Resistance [Typ.]	400mΩ
DC Resistance [Max.]	450mΩ
Self Resonant Frequency [Min.]	400MHz
Self Resonant Frequency [Typ.]	650MHz
Q [Min.]	15
Q [Typ.]	30

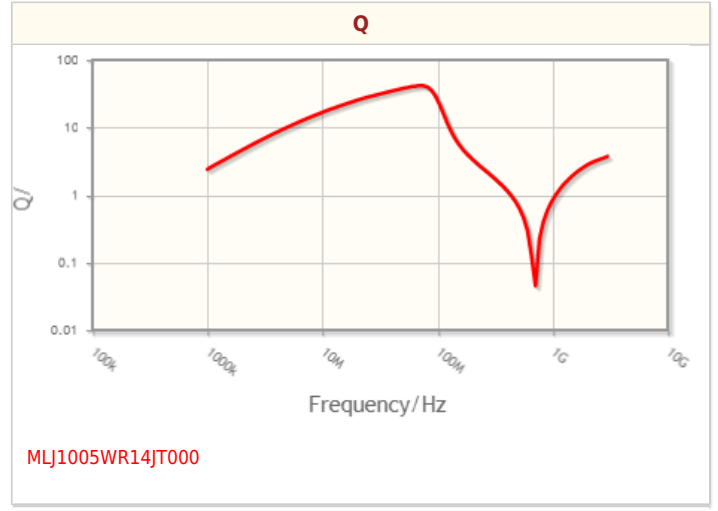
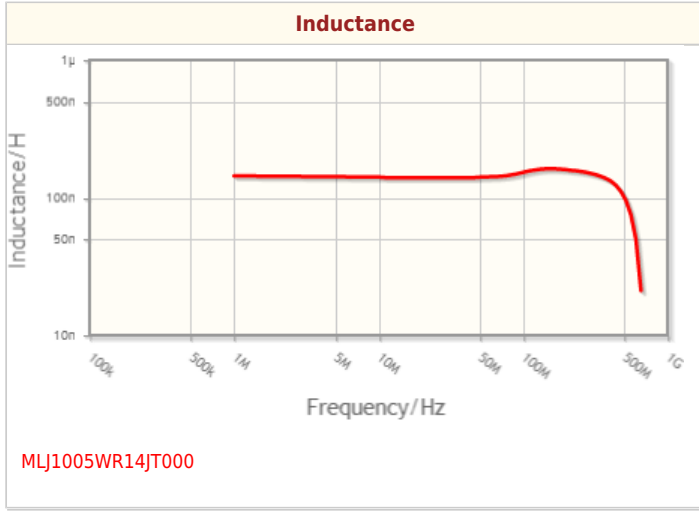
Other	
Operating Temp. Range (Including Self-Temp. Rise)	-55 to 125°C
Soldering Method	Reflow Iron Soldering
AEC-Q200	No
Packing	Punched (Paper)Taping [180mm Reel]
Package Quantity	10000pcs
Weight	0.0012g

! Images are for reference only and show exemplary products.  
 ! This PDF document was created based on the data listed on the TDK Corporation website.  
 ! All specifications are subject to change without notice.

MLJ1005WR14JT000



Characteristic Graphs(This is reference data, and does not guarantee the products characteristics.)



! Images are for reference only and show exemplary products.  
! This PDF document was created based on the data listed on the TDK Corporation website.  
! All specifications are subject to change without notice.



## Associated Images

