

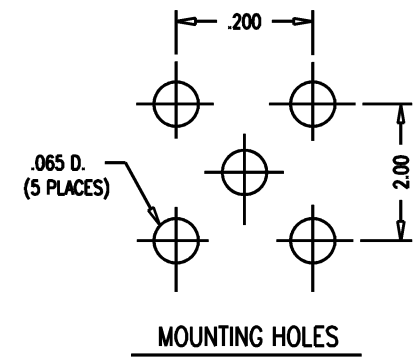
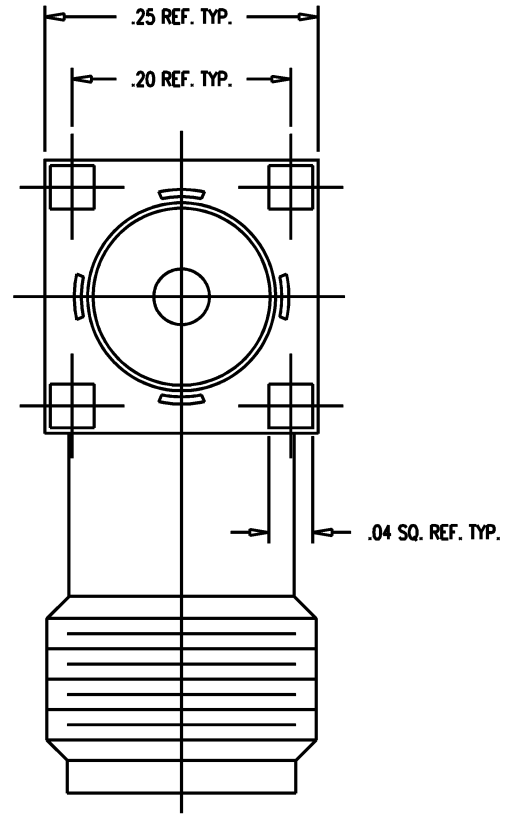
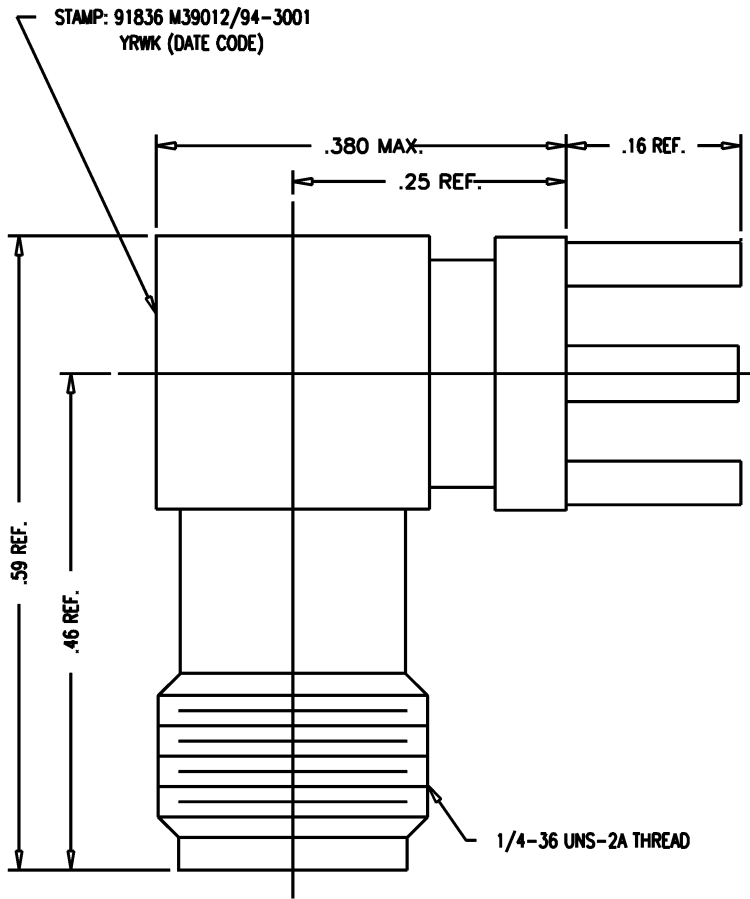
DASH NO.	M CODE	MADE FROM
----------	--------	-----------

GSD

M39012/94-3001

REVISIONS	
ISSUE	CHANGES
4	CN 32906 E REDRAWN RESTRICTION REMOVED JCA 03/01/91
5	CN 33494 C JCA 10/31/91
6	CN 34192 E KH 10/19/92
7	CN 36001 E ME 01/16/95
8	CN 38473 E TML 01/21/02
9	CN 39474 A DCT 6/13/6
10	CN 39552 C JPK 08/07/06
11	CN 39815 C PMC 2/28/07

877-87-1
SCALE 8:1
APPROX SURFACE AREA
USED ON
REF:
RCPT, P.C.B., ANG, SMA
DRAWN JCA 00/01/91
DESIGN GA 03/01/91
APPR. DW 10/26/92
KINGS ELECTRONICS CO., INC. ROCK HILL, SOUTH CAROLINA 29730
M39012/94-3001



- NOTES:
- INTERFACE PER MIL-STD-348 FIG. 310-2.
 - MATERIALS:
INSULATORS: TEFLON, ASTM-D4894
CENTER CONTACT: BER. COP., ASTM-B196
ALL OTHER PARTS: STAINLESS STEEL, SAE-AMS-00-S-763
 - FINISHES:
ALL METAL PARTS: HARD GOLD PLATE PER ASTM-B488
 - ELECTRICAL CHARACTERISTICS:
NOMINAL IMPEDANCE: 50 OHMS
FREQUENCY RATING: DC TO 12.4
VOLTAGE RATING: 1000 VRMS

GSD