

01

0122

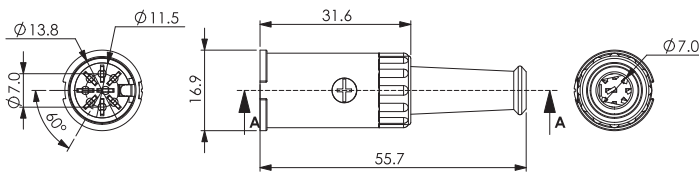
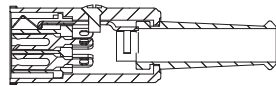
DIN circular connectors



DIN socket, straight version, shielded, with bayonet lock, metal housing, bend protection and solder terminals

01

0122



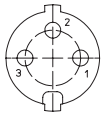
**Environmental conditions**

Temperature range -20 °C/+85 °C

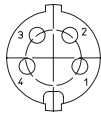
**Materials**

Insulating body	ABS, V-0 according to UL94
Contact spring	CuZn, silver-plated
Strain relief	steel, nickel-plated
Housing	Zn alloy, nickel-plated
Bend protection sleeve	PVC
Screw	steel, nickel-plated

**DIN 41524**

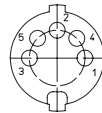


0122 03



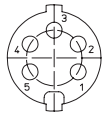
0122 04

**DIN 41524**



0122 05

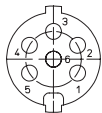
**DIN 45322**



0122 05-1

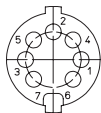
**Connectable conductors for solder area**

Section	≤ AWG 18 (0,75 mm <sup>2</sup> )
Cable diameter	7,0 mm



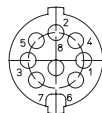
0122 06

**DIN 45329**



0122 07-1

**DIN 45326**



0122 08-1

**Electrical data (at T<sub>amb</sub> 20 °C)**

Contact resistance	≤ 30 mΩ (contact spring) ≤ 50 mΩ (housing)
Rated current	≤ 4 A
Rated voltage	60 V AC
Rated impulse voltage	250 V AC RMS/60 s
Insulation resistance	≥ 100 MΩ

**Associated products**

Counterparts	☞ 0131	☞ 0132	☞ 0134
--------------	--------	--------	--------

01

0122

Designation	Pole Number	PU (Pieces)	MDQ (Pieces)
0122 03	3	50	150
0122 04	4	50	150
0122 05	5	50	150
0122 05-1	5	50	150
0122 06	6	50	150
0122 07-1	7	50	150
0122 08-1	8	50	150

**Packaging:**

in individual plastic bags, in a cardboard box