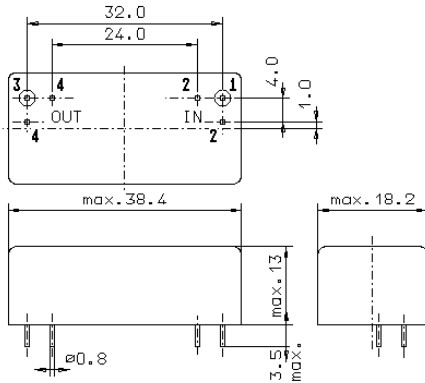


Specification for monolithic crystal filter:

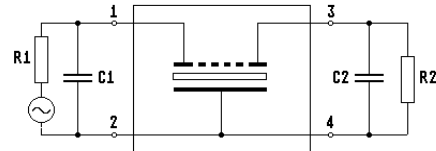
MQF 10.7-1300/08

1. General

1.1. Package:



GM17



- 1.2. Type name: MQF 10.7-1300/08
- 1.3. Number of poles: 6
- 1.4. Operating temperature range: -40°C to +70°C
- 1.5. Storage temperature range: -45°C to +85°C

2. Electric values

- 2.1. Nominal centre frequency fo: 10.7 MHz
- 2.2. **Pass band**
 - 2.2.1. Bandwidth between 6 dB - frequencies: > fo ± 6.5 kHz
 - 2.2.2. Ripple: < 1.5 dB at fo ± 5.0 kHz
 - 2.2.3. Insertion loss: < 4.0dB
(measured on smallest attenuation in pass band)
- 2.3. **Stop band**
 - 2.3.1. fo ± 15.0 kHz > 40 dB
 - 2.3.2. fo ± 20 kHz > 60 dB
 - 2.3.3. alternate attenuation fo ± 20 kHz...±300 kHz > 60 dB
- 2.4. Terminating impedance (input and output): 900 Ω // 25.0 pF
- 3. Marking: manufacturer, date code
10.7-1300/08
or OEM marking
- 4. Environment conditions: Corresponding to Vectron CF001

Edited by: _____ date: _____ name: _____