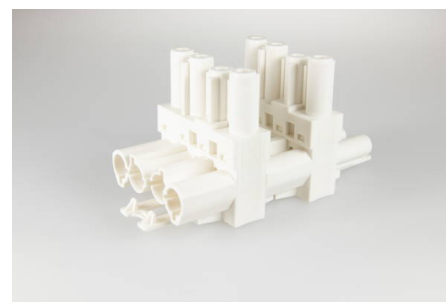




Connectors System AC 166®
Distributor

AC 166 GVT 4/ 4 white

1 Input/3 Output Terminals, T-shaped, 4 pole, white, Coding: 1 (Mains),
Voltage Rating: 250 V, Current Rating: 20 A



Order Info

Reference Number (ref. no.)	167154V2
Applications	Lighting, Installation
PU	50
EAN	4028012117468

Type

Type	1 Input/3 Output Terminals, T-shaped
Number of poles	4 pole
Colour	white
Coding	1 (Mains)
PE Function	yes
Protection Against Incorrect Plugging	yes
Latch	yes

Technical Data

Voltage Rating	250 V
Current Rating	20 A
Insulating Material	PA 6.6
Contact Material	Brass
Flammability Rating	V-2
max. Ambient Temperature Operation	100 °C
IP Code	IP20
IP Code when Plugged	IP40