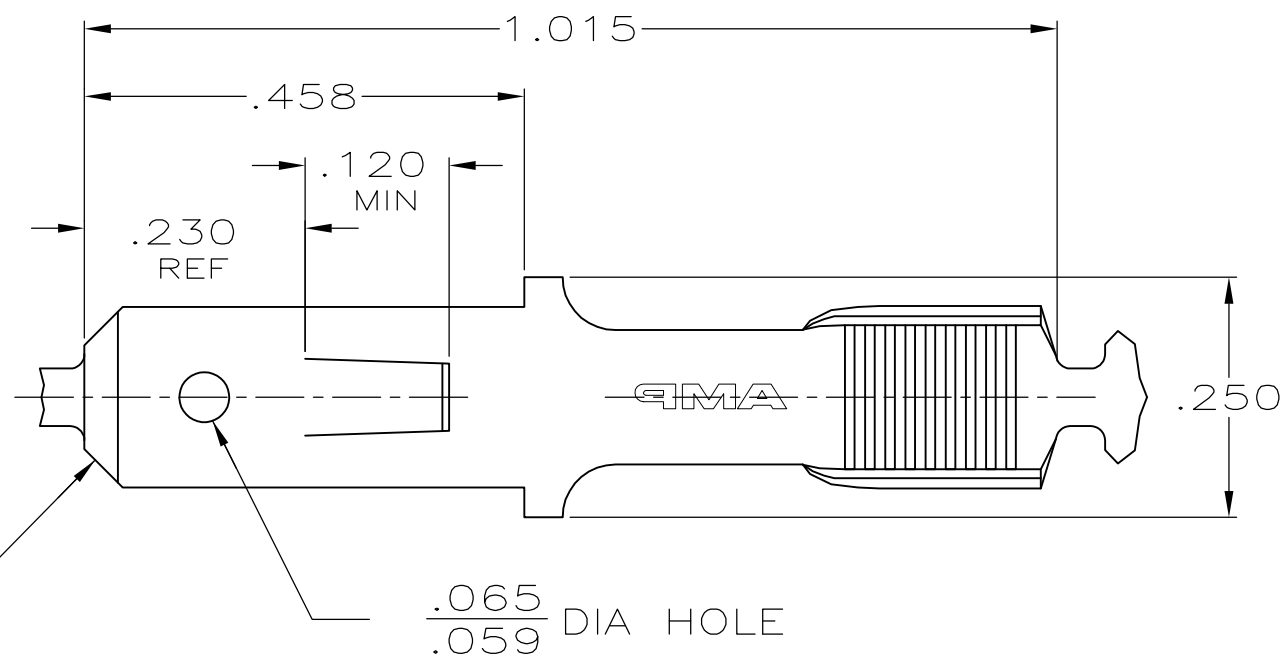


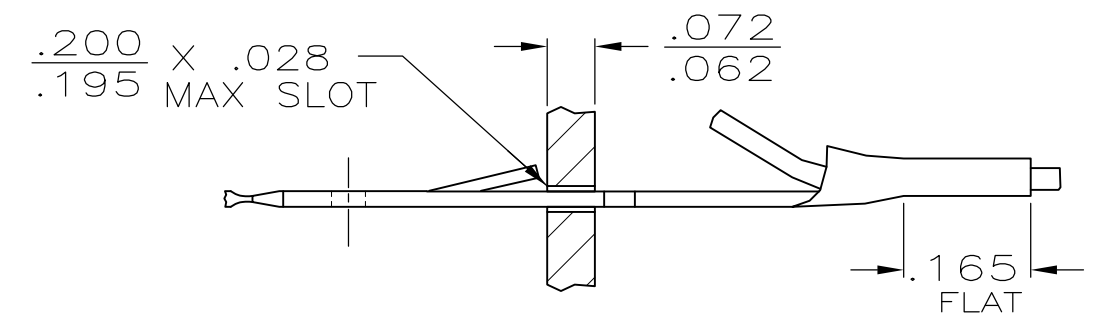
THIS DRAWING IS UNPUBLISHED. RELEASED FOR PUBLICATION
 © COPYRIGHT - By - ALL RIGHTS RESERVED.

LOC	DIST	REVISIONS			
P	LTR	DESCRIPTION	DATE	DWN	APVD
AF	50	K1	REVISED PER ECR-15-004720	08JUN2015	GRZ RP

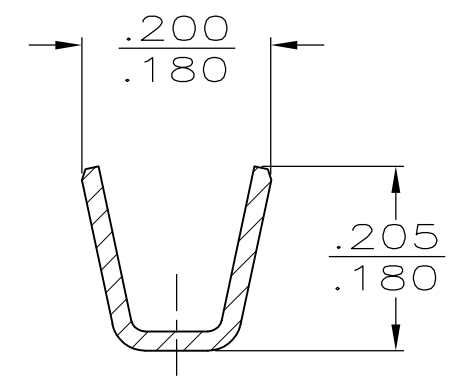
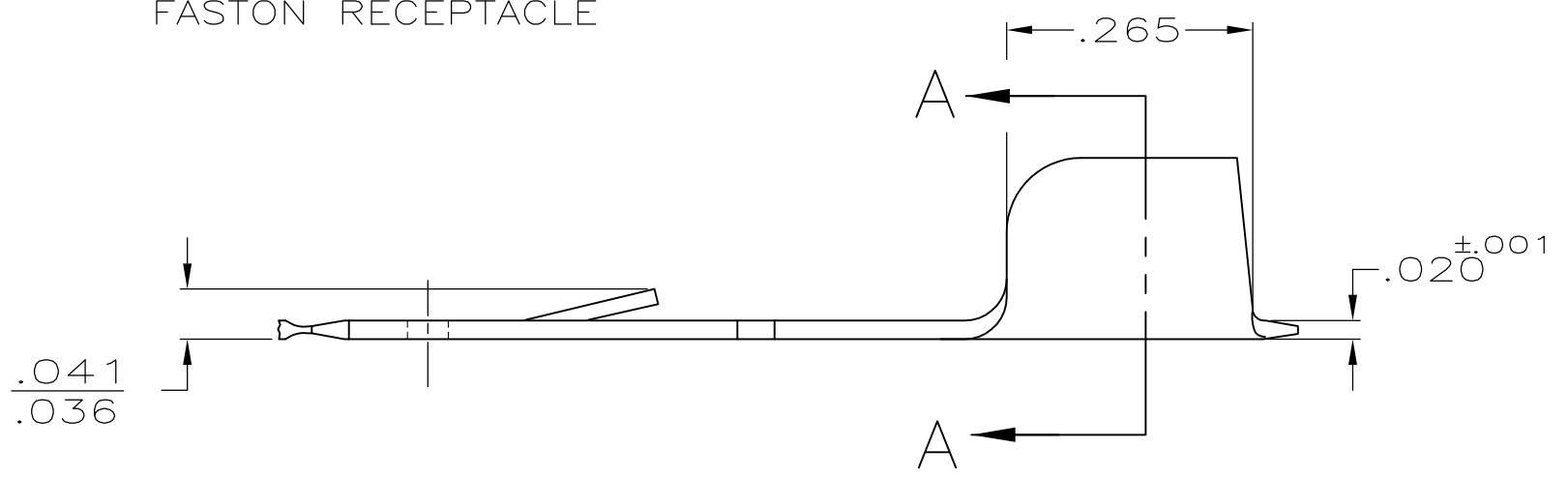
1 CONTINUOUS STRIP ON REELS
 2 REVERSE REELING FROM 62445-2.



FITS .187 SERIES FASTON RECEPTACLE



INSTALLED VIEW PIGTAIL CRIMP



SECTION A-A

#15-12 MAGNET WIRE 3000 - 7000 CMA	TIN / VARNISH RESIST	2 62445-3
	TIN .000080 MIN	62445-2
WIRE SIZE	FINISH	62445-1
		PART NO

THIS DRAWING IS A CONTROLLED DOCUMENT.		DWN JR RUTH 11/7/91	STE TE Connectivity	
DIMENSIONS: INCHES		CHK MS FEHER 11/7/91		
TOLERANCES UNLESS OTHERWISE SPECIFIED:		APVD J GILLESPIE 11/7/91	NAME	
0 PLC ± -		PRODUCT SPEC	TAB, AMPLIVAR, FASTON-FASTON, .187 SERIES	
1 PLC ± -		APPLICATION SPEC	SIZE	CAGE CODE
2 PLC ± -		WEIGHT	A3	00779
3 PLC ± .015		CUSTOMER DRAWING	DRAWING NO	C-62445
4 PLC ± -		SCALE	5:1	SHEET 1 OF 1
ANGLES ± -		RESTRICTED TO	REV K1	
MATERIAL BRASS	FINISH SEE TABLE			