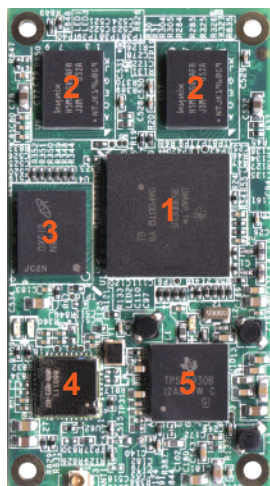


# TAO-3530

## System on Module



TI OMAP 3530 application processor with ARM Cortex-A8 CPU, integrated DSP and POWERVR SGX 530 for 2D and 3D graphics acceleration.

Flexible expansion possibilities by two 100 pin NAIS board to board connectors to customize your own interfaces on base boards at low cost.



### System

CPU	TI OMAP 3530 @ 600MHz (1)
DSP core	TMS320C64x+™ @ 430MHz
PMIC	TPS65930 (5)
Memory	256 MB Low power mobile DDR (2)
Storage	512 MB NAND Flash (3)
Wireless LAN	Marvell 8686 802.11b/g (4)
Supported OS	Linux 2.6.x, Windows CE 6, Android

### Interfaces

Connectors	two 100 pin NAIS connectors SPI, UART, USB host, USB OTG/ client, I <sup>2</sup> C, PWM lines, 1-wire, MMC lines, A/D lines, camera, audio in/out/mic, S-Video, Display
------------	---

### Graphic Capabilities

Chipset	POWERVR SGX 530 10Mpolys/s, up to 720p resolution
API support	OpenGL 2.0, OpenGL ES 1.1, OpenVG 1.0

### Power

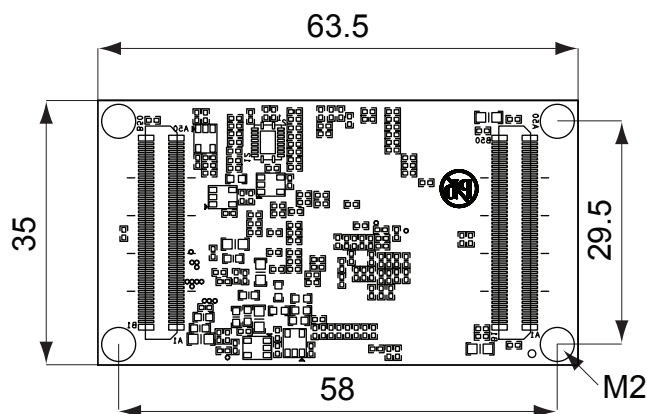
Power consumption	<2.0 Watt with Wireless enabled
Standby	<50 mWatt
Input power	5V, 4.2V

### Environmental and Mechanical

Temperature	Commercial: 0° to 70° C Extended: -20° to 70° C (no wifi) Industrial: -40° to 85° C (no wifi)
Humidity	10-90%
Dimensions	63.5 x 35 x 6.4 mm 2½ x 1¾ x ¼ inch
MTBF	>100,000 hours
Weight	10 grams
Shock	50G / 25ms
Vibration	20G / 0-600 Hz

### Dimensions

units in mm



### Order Information

TAO-3530	OMAP3530 System on Module
TAO-3530-i	OMAP3530 System on Module with industrial temperature specifications (MOQ's apply)
TAO-3530W	OMAP3530 system on module with Wireless LAN

Development kits available

# TechNexion

Phone: +886-2-8227-3585  
E-mail: sales@technexion.com  
Web: http://www.technexion.com

