

Kinghelm®



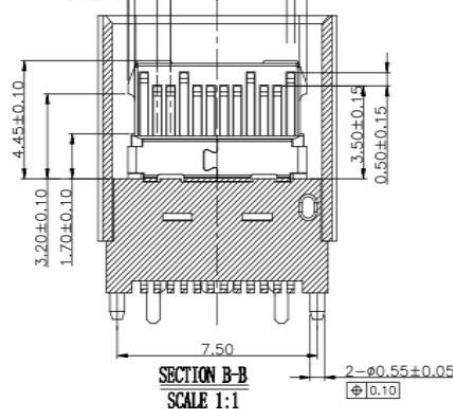
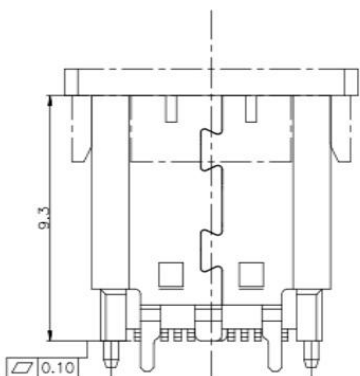
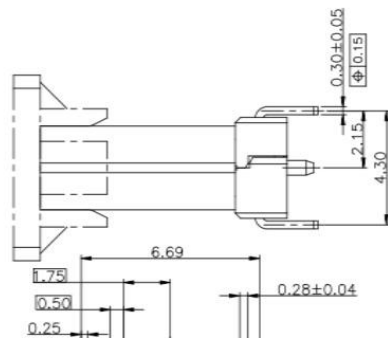
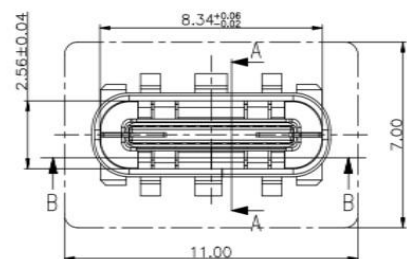
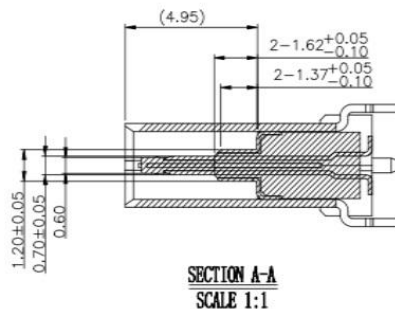
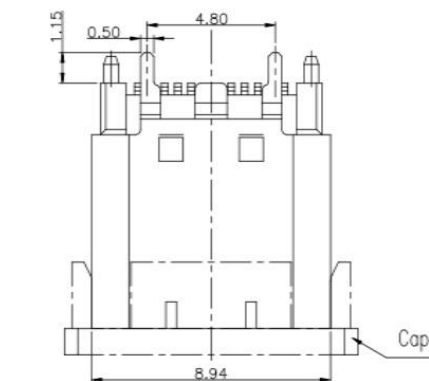
REV.	DESCRIPTION	DATE	CHANGER
A/0	原始版本		

DRAWING FOR CUSTOMER

型号: KH-TYPE-C-L9.3-24P

NOTES:

- MATERIAL:
 - MOLDING: LCP UL94 V-0
 - CONTACT: COPPER ALLOY.
 - GOLD PLATED 1u" Min ON CONTACT AREA,
 - 100u"Min TIN (LEAD FREE) ON SOLDER AREA,
 - SHELL: SUS304, 50u" NICKEL PLATING OVER ALL.
 - SHILD: SUS304
- MECHANICAL:
 - INSERTION: 5~20N.
 - EXTRACTION: 8~20N.
 - DURABILITY: 10000 CYCLES
- ELECTRICAL:
 - CURRENT: 5A MIN FOR VBUS;
 - 0.25A MIN FOR OTHER.
 - VOLTAGE: 5VAC MAX
 - WITHSTANDING VOLTAGE: 100V AC.
 - CONTACT RESISTANCE: 40mΩ MAX.
 - INSULATION RESISTANCE: 100MΩ MIN.
- ENVIRONMENTAL
 - TEMPERATURE RANGE -55°C ~ +85°C



深圳市金航标电子有限公司		WWW.BDS666.COM	
型号: KH-TYPE-C-L9.3-24P		0755-83044319	
TOLERANCE: X. ±0.25 X.X ±0.20 X.XX ±0.15 X.XXX ±0.10 X.* ±1" X.*' ±0.05"	DRAWN BY: 刘贤敏	DATE: 2015.12.03	PART NAME: USB C TYPE FEMALE SMT VERTICAL 9.3 CONNECTOR
	CHECKED BY:	DATE:	PART NO. H0029-24-Z1-1
	APPROVED BY:	DATE:	MOLD NO.
UNIT: mm [inch]			REMARK
SCALE: 1:1 SIZE: A4			DRAW NO.