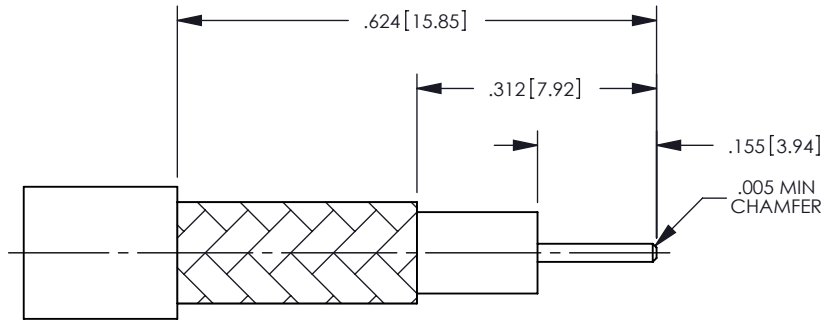
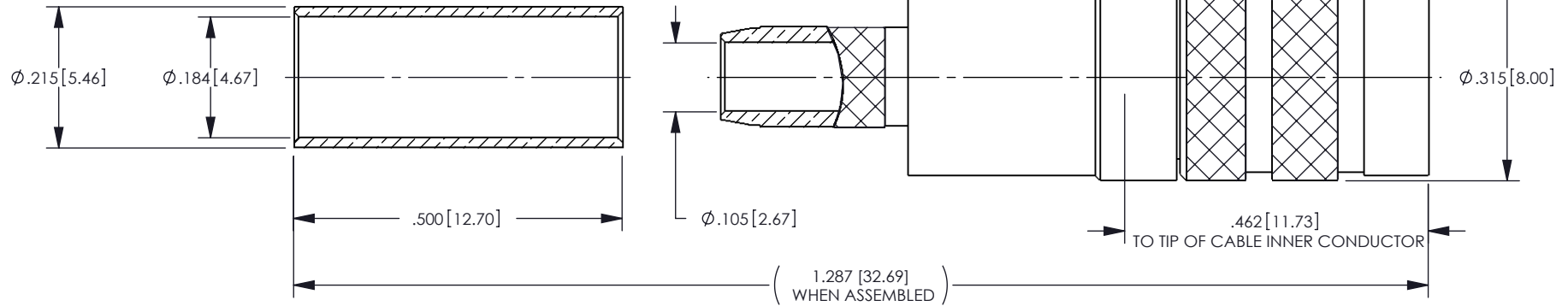


NOTES: UNLESS OTHERWISE SPECIFIED

1. DESIGNED FOR USE WITH BELDEN 1855A, GEPCO VDM230 OR EQUIVALENT CABLE.
2. MATERIAL SPECIFICATIONS:
 BODY: BRASS PER ASTM B16.
 CENTER CONTACT: COPPER ALLOY.
 OUTER CONTACT: COPPER ALLOY.
 INSULATOR: TEFLON PER ASTM D1710.
 FERRULE: BRONZE C22000.
3. FINISH SPECIFICATIONS:
 BODY: .000100 MIN NICKEL PER AMS-QQ-N-290 OVER COPPER FLASH PER ASTM B734 (RoHS).
 CENTER CONTACT: .000030 MIN GOLD PER ASTM B488 OVER .000080 MIN NICKEL PER AMS-QQ-N-290 (RoHS).
 OUTER CONTACT: .000030 MIN GOLD PER ASTM B488 OVER .000080 MIN NICKEL PER AMS-QQ-N-290 (RoHS).
 FERRULE: .000050 MIN NICKEL PER AMS-QQ-N-290 OVER .000050 MIN COPPER FLASH PER ASTM B734 (RoHS).
4. STRIP USE KINGS KTS-8-2.
5. CRIMP FERRULE USE KINGS KTH-1000 & KTH-2025(.178 HEX).
6. INTERFACE PER CECC 22230.
7. CAP-E02.
8. ELECTRICAL SPECIFICATIONS:
 IMPEDANCE: 75 OHMS.
 FREQUENCY RANGE: DC-6.0 GHz.
 RETURN LOSS: <-20dB UP TO 3.0 GHz, <-15dB UP TO 6.0 GHz.
9. COMPLIANT TO SMPTE 424M (3G-SDI) STANDARD.

REV	DESCRIPTION	BY DATE	APPD
F	REVISED PER ER041839	05/22/12 TZ	CY

P/N	DESCRIPTION	QTY
0345-E00-C7201N	SINGLE PACK	1
0345-E00-C7201NU	BULK PACK	400



CATALOG P/N: 0345-E00-C7201N

PER ASME Y14.5M-1994 UNLESS OTHERWISE SPECIFIED: DIMENSIONS ARE IN INCHES [MM] TOLERANCES: DECIMAL: .XX [X.X] ± .01 [0.3] .XXX [X.XX] ± .005 [0.13] .XXXX [X.XXX] ± .XXXX ANGLES: ± 2° SCALE: 4:1		by WINCHESTER Winchester Electronics Corporation 62 Barnes Industrial Road North Wallingford, Connecticut 06492	
CUSTOMER DRAWING			
DRAWN DW	DATE 05/22/08	APPROVED DCam	DATE 05/28/08
APPROVED XXX	DATE XX/XX/XX	APPROVED XXX	DATE XX/XX/XX
A SD0345-E00-C7201N			SHT 1 OF 1
REV F			DIN 1.0/2.3 75 OHM PLUG FOR BELDEN 1855A CABLE (RoHS COMPLIANT)