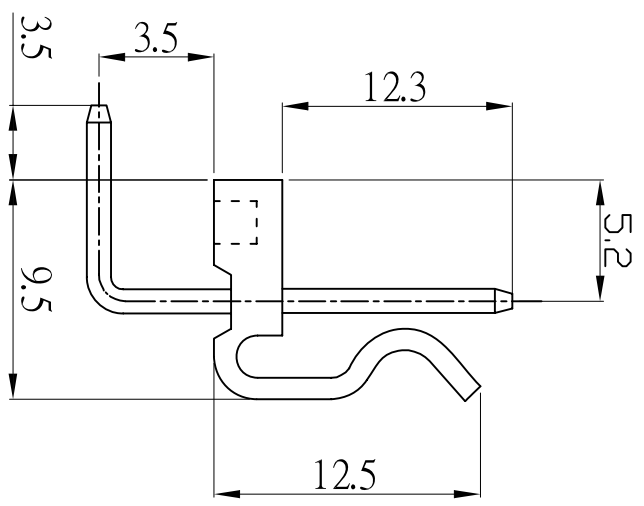


P.C.B. LAYOUT



Poles	Part NO.	Dimension(mm)	
		A	B
2	3961R-2P	3.96	7.92
3	3961R-3P	7.92	11.88
4	3961R-4P	11.88	15.84
5	3961R-5P	15.84	19.80
6	3961R-6P	19.80	23.76
7	3961R-7P	23.76	27.72
8	3961R-8P	27.72	31.68
9	3961R-9P	31.68	35.64
10	3961R-10P	35.64	39.60
11	3961R-11P	39.60	43.56
12	3961R-12P	43.56	47.52
13	3961R-13P	47.52	51.48
14	3961R-14P	51.48	55.44
15	3961R-15P	55.44	59.40
16	3961R-16P	59.40	63.36
17	3961R-17P	63.36	67.32
18	3961R-18P	67.32	71.28
19	3961R-19P	71.28	75.24
20	3961R-20P	75.24	79.20

SPECIFICATION

Current rating: 5A AC/DC
 Voltage rating: 250V AC/DC
 Contact resistance: 20mΩ max.
 Withstand voltage: 1500V AC/min.
 Insulation resistance: 1000MΩ/min.
 Temperature range: -25℃~+85℃

Material:

Part No:2~20
 Post:Brass.Tin/plated
 Base:Nylon66 UL94V-2

APPROVED:	DATE:	深圳市灿科盟实业有限公司 Ckmtw CHANKEMENG INDUSTRYCO., LTD
CHECKED:	DATE:	
DRAWN:	DATE:	TITLE:
Iuli-Liu	2016-12-17	3961R-XP
TOLERANCE TABLE		CLIENT P/N /
.0	±0.20	UNIT mm
.00	±0.10	SCALE Free
.000	±0.05	REV. A
		WD00