

PLEASE CHECK WWW.MOLEX.COM FOR LATEST PART INFORMATION

Part Number: [63445-2043](#)

Status: **Active**

Description: Anvil

Documents:

[RoHS Certificate of Compliance \(PDF\)](#)

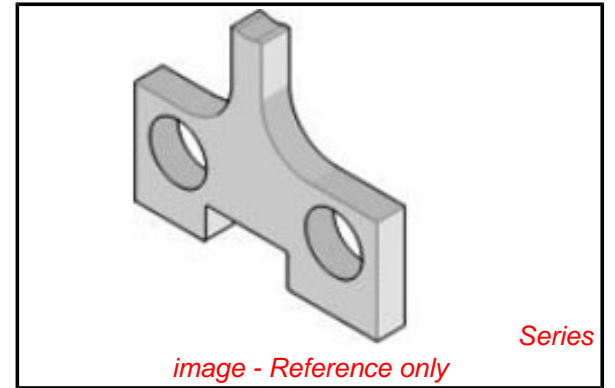
General

Product Family	Application Tooling
Series	T9999
Comments	See Tooling Specification (PDF) Above
Function	Cutter
Geographic Area	Global
Level of Automation	Semi-Automatic
More Detailed Tech Information	applicationtooling@molex.com
Product Name	N/A
Survey	www.molex.com//review/apptool_survey.html
Tool Type	Anvil
UPC	800753156654

Material Info

Reference - Drawing Numbers

Application Tooling Documents ATS-STANDARD-PARTS



EU RoHS

**ELV and RoHS
Compliant**

REACH SVHC

Not Reviewed

Low-Halogen Status

Not Reviewed

China RoHS



**Need more information on product
environmental compliance?**

Email productcompliance@molex.com
For a multiple part number RoHS Certificate of
Compliance, [click here](#)

Please visit the [Contact Us](#) section for any
non-product compliance questions.

Search Parts in this Series

T9999Series

Use With

11-18-2230 , 11-18-2236 , 11-18-3203 ,
11-18-3222 , 11-18-3228 , 63801-8000 ,
63801-8070 , 63822-0000 , 63822-0070 ,
63900-2200 , 63900-2270 , 63900-7200 ,
63900-7270