

Monolithic crystal filter

MQF45.0-3000/09



Application

- 4 pol filter
- i.f.- filter
- use in mobile and stationary transceivers

Limiting values

		Unit	Value
Center frequency	f_0	MHz	45.0
Insertion loss		dB	≤ 3.0
Pass band at 6.0 dB		kHz	± 15.00
Ripple in pass band	$f_0 \pm 15.00$ kHz	dB	\leq Gaussian
Stop band attenuation	$f_0 \pm 30$ kHz	dB	≥ 25
	$f_0 \pm 60$ kHz	dB	> 50
Spurious responses		dB	> 15
Group delay distortion	$f_0 \pm 15$ kHz	μ s	< 15

Terminating impedance Z

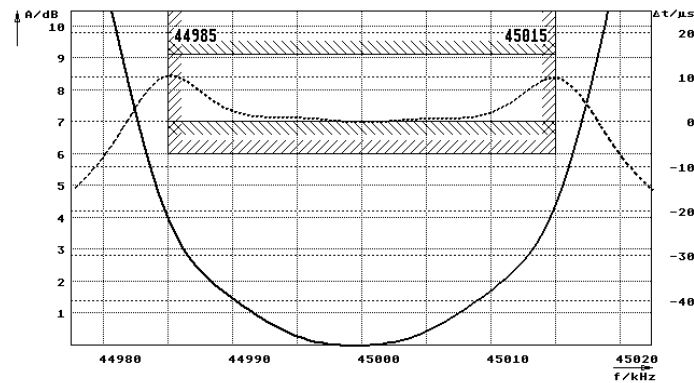
R1 C1		Ohm/pF	650 2
R2 C2		Ohm/pF	650 2
Coupling capacitance	Ck	pF	9.0

Operating temp. range

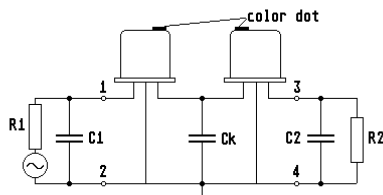
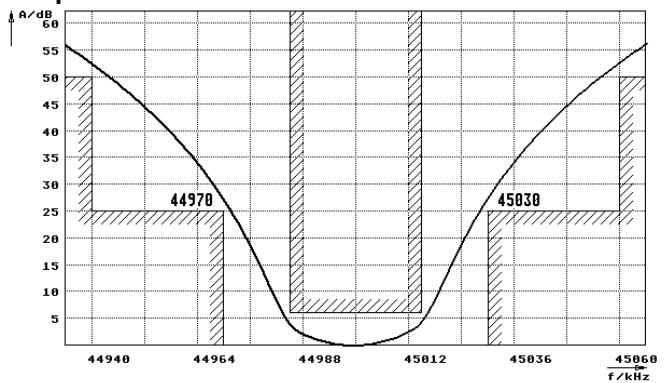
$^{\circ}$ C -20... +70

Characteristics MQF45.0-3000/09

Pass band



Stop band



- Pin connections:
- 1 Input
 - 2 Ground-Input
 - 3 Output
 - 4 Ground-Output

