

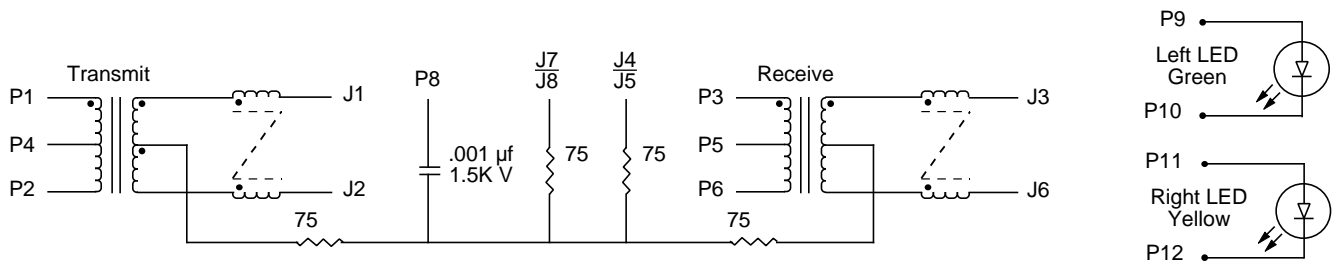
## EPJ9045-S9

- Space Saving RJ-45 Connectors
- Includes Common Mode Chokes
- UL94V-0 Rated Connector Housing
- Complete Bob Smith Termination Included
- 1500 Vrms Isolation

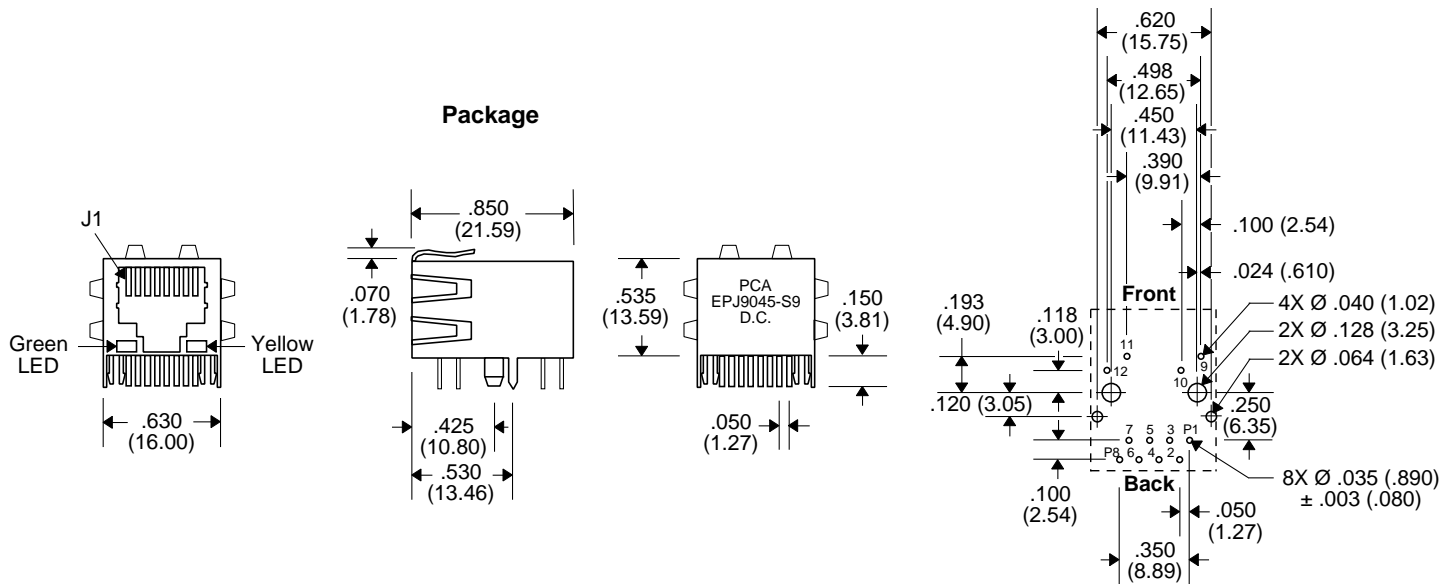
### Electrical Parameters @ 25° C

| Turns Ratio<br>(± 5%) | OCL<br>(μH Min.)                 | Insertion Loss<br>(dB Max.) | Return Loss<br>(dB Min.) |              |              |              | CMRR<br>(dB Min.) |               | Crosstalk<br>(dB Min.) |              |               |
|-----------------------|----------------------------------|-----------------------------|--------------------------|--------------|--------------|--------------|-------------------|---------------|------------------------|--------------|---------------|
|                       |                                  |                             | 1-10<br>MHz              | 10-30<br>MHz | 30-60<br>MHz | 60-80<br>MHz | 1-50<br>MHz       | 50-100<br>MHz | 1-30<br>MHz            | 30-60<br>MHz | 60-100<br>MHz |
| Xmit/Rcv              | @ 100 KHz, 0.1 V<br>8 mA DC Bias | 1-100<br>MHz                | 1-10<br>MHz              | 10-30<br>MHz | 30-60<br>MHz | 60-80<br>MHz | 1-50<br>MHz       | 50-100<br>MHz | 1-30<br>MHz            | 30-60<br>MHz | 60-100<br>MHz |
| 1:1/1:1               | 350                              | -1.0                        | -20                      | -16          | -12          | -10          | -30               | -20           | -40                    | -35          | -30           |

### Schematic



### Recommended PCB Layout (Top View)



Unless Otherwise Specified Dimensions are in Inches /mm ± .010 /.25