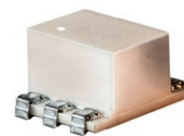


Surface Mount Directional Coupler

50Ω 300 to 1100 MHz

LRDC-20-2J+ LRDC-20-2J



CASE STYLE: QQQ569
PRICE: \$15.95 ea. QTY (1-9)

+ RoHS compliant in accordance
with EU Directive (2002/95/EC)

The +Suffix identifies RoHS Compliance. See our web site
for RoHS Compliance methodologies and qualifications.

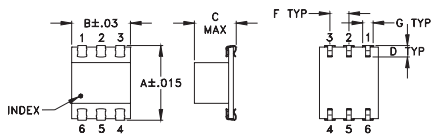
Maximum Ratings

Operating Temperature	-40°C to 85 °C
Storage Temperature	-55°C to 100°C

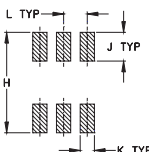
Pin Connections

INPUT	6
OUTPUT	1
COUPLED	4
GROUND	2,5
ISOLATE (DO NOT USE)	3

Outline Drawing



PCB Land Pattern



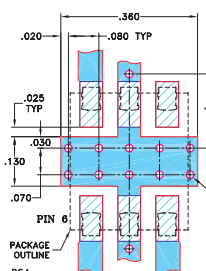
Suggested Layout,
Tolerance to be within ±.002

Outline Dimensions (inch)

A	B	C	D	E	F	G
.390	.31	.225	.060	--	.100	.045
9.91	7.87	5.72	1.52	--	2.54	1.14

H	J	K	L	M	wt
.420	.120	.060	.100	--	grams
10.67	3.05	1.52	2.54	--	0.50

Demo Board MCL P/N: TB-31 Suggested PCB Layout (PL-087)



- NOTES:
- TRACE WIDTH IS SHOWN FOR ROGERS RO4350B WITH DIELECTRIC THICKNESS 0.030" ± 0.002". COPPER: 1/2 OZ. EACH SIDE. FOR OTHER MATERIALS TRACE WIDTH MAY NEED TO BE MODIFIED.
 - BOTTOM SIDE OF THE PCB IS CONTINUOUS GROUND PLANE.
- Denotes PCB copper layout with SMOBC (SOLDER MASK OVER BARE COPPER)
 - Denotes COPPER LAND PATTERN FREE OF SOLDER MASK

Features

- low mainline loss, 0.25 dB typ.
- high directivity, 17 dB typ.
- aqueous washable
- J-leads for strain relief and excellent solderability

Applications

- VHF/UHF
- cellular
- communications
- signal sampling

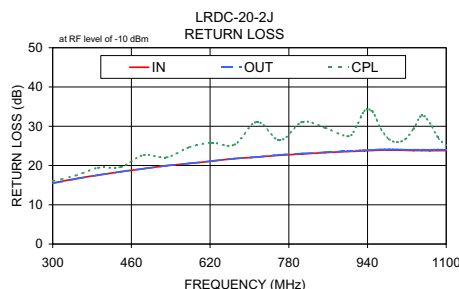
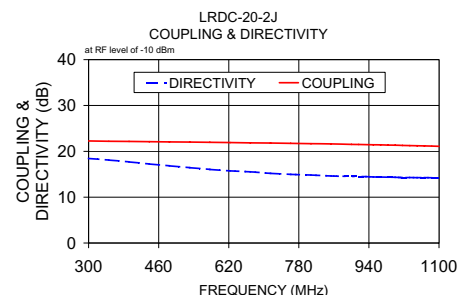
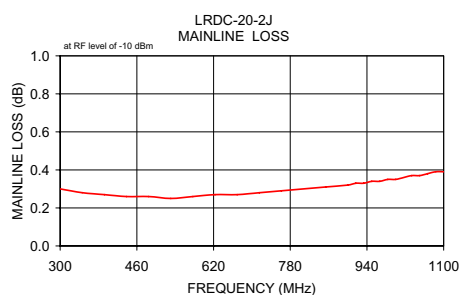
Directional Coupler Electrical Specifications

FREQ. (MHz)	COUPLING (dB)		MAINLINE LOSS ¹ (dB)		DIRECTIVITY (dB)		VSWR (:1)	POWER INPUT, W		
	Nom.	Flatness	Typ.	Max.	Typ.	Min.		Typ.	L Max.	MU Max.
f_L - f_U										
300-1100	20.5±1.0	±1.3	0.25	0.6	17	10	1.2	2.0	2.0	

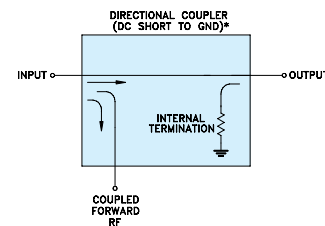
1. Mainline loss includes theoretical power loss at coupled port.

Typical Performance Data

Frequency (MHz)	Mainline Loss (dB) In-Out	Coupling (dB) In-Cpl	Directivity (dB)	Return Loss (dB)		
				In	Out	Cpl
300.00	0.30	22.27	18.46	15.52	15.46	16.06
438.46	0.26	22.11	17.25	18.41	18.43	19.61
576.92	0.26	21.96	16.06	20.51	20.53	24.62
715.38	0.28	21.80	15.20	22.14	22.18	31.13
807.69	0.30	21.67	14.83	22.93	23.08	31.10
900.00	0.32	21.51	14.54	23.56	23.66	27.46
950.00	0.34	21.43	14.42	23.84	24.00	33.75
1000.00	0.35	21.33	14.34	23.91	24.09	25.94
1050.00	0.37	21.21	14.26	23.80	24.04	32.75
1100.00	0.39	21.10	14.24	23.78	24.01	25.15



Electrical Schematic



* ELECTRICAL SCHEMATIC IS FOR DIRECTIONAL COUPLER WITH INTERNAL TRANSFORMER(S) THAT ROUTES DC FROM RF PORTS TO GROUND.

Mini-Circuits®
ISO 9001 ISO 14001 AS 9100 CERTIFIED

minicircuits.com

P.O. Box 350166, Brooklyn, New York 11235-0003 (718) 934-4500 Fax (718) 332-4661 For detailed performance specs & shopping online see Mini-Circuits web site



The Design Engineers Search Engine Provides ACTUAL Data Instantly From MINI-CIRCUITS At: www.minicircuits.com

IF/RF MICROWAVE COMPONENTS

REV. A
M119986
LRDC-20-2J
WZ/TD/CP/AM
081120