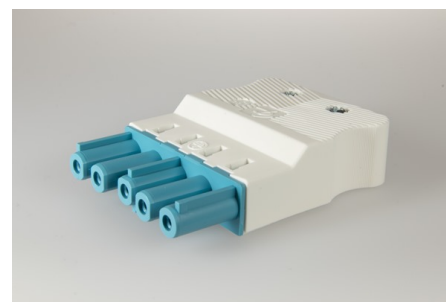




Connectors System AC 166® Plug and Socket Connectors Flat Version

AC 166 GBUF/515 pastel blue ZEL white

Socket, 5 pole, pastel blue, Coding: 5 (DALI), Cable Diameter min.: 9.3 mm, Cable Diameter max.: 10.3 mm, Voltage Rating: 250 V, Current Rating: 20 A, Cross-Section: 2.5 mm², Connection Type: Screw



Order Info

Reference Number (ref. no.)	165455P
Applications	Lighting, Installation, Electrical Appliances
PU	100
EAN	4028012115624

Type

Type	Socket
Number of poles	5 pole
Clamping Units per Pole	1
Colour	pastel blue
Coding	5 (DALI)
Cross-Section	2.5 mm ²
Connection Type	Screw
PE Function	yes
Protection Against Incorrect Plugging	yes

Technical Data

Voltage Rating	250 V
Current Rating	20 A
Insulating Material	PA 6.6
Contact Material	Brass
Core Cross-Section min.	0.5 mm ²
Core Cross-Section max.	2.5 mm ²
Impulse Voltage Rating	4.0 kV
Flammability Rating	V-2
max. Ambient Temperature Operation	70 °C
IP Code	IP20
IP Code when Plugged	IP40
Type of Conductor Solid	yes
Type of Conductor Flexible	yes
Type of Conductor Stranded	yes

Stripping Length	7.0 mm
Dismantling Length PE	39.0 mm
Dismantling Length	32.0 mm
Assembly Contact Screw	0.5x3.0 / \cup 0.3 Nm
Assembly Strain Relief	PZ 1 / \cup 0.5 Nm
Cable Diameter min.	9.3 mm
Cable Diameter max.	10.3 mm
Strain Relief	yes
Approbation EN61535	AC166-G_Leitungen_EN61535_20121212_20180725_VDE_ENEC_40
Approbation UL	160_163_AC164_AC166_20011003_20170727_UL_E220480_Sec.1-(
Approbation CSA	AC_160-163-166_166G_20080321_CSA_1997949_Certificate_web.p

Accessories

AC 166 VSF white	169553
AC 166 VSF black	169563
AC 166 VSE white	169453
AC 166 VSE black	169463
AC 166 VSL white	169554
AC 166 VSL black	169564
AC 166 VSF white	169553
AC 166 VSF black	169563