



## 48 FE + 2 GE + 1 GE SFP Switch



GWS-5150

H/W Version: 1

### Fast connections and fiber distances

GWS-5150 is a 48-port Fast Ethernet Switch (10/100Mbps) that gives you a high-performance, low-cost, easy-to-use, solution to expand your network reach. With 2 Gigabit ports, you're able to connect to other networks giving you flexible and powerful deployment options. And the 1 SFP port (you can link up with other offices up to 70km away. (SFP module sold separately.)

### Bandwidth hungry? Not a problem.

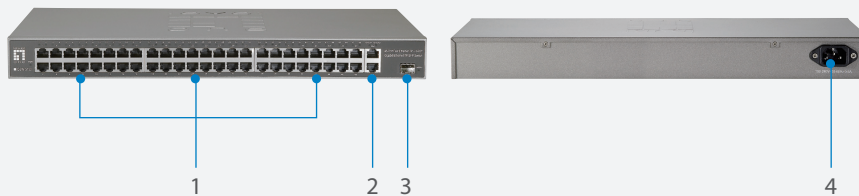
What happens when you have several users accessing multimedia applications all at the same time? No need to worry as GWS-5150 allows you to move large files faster and easier. Transfer your CGI, CAD, video, or other large multimedia files over the network instantly and without lag. And with the fiber connection option, you can even share these files to remote offices up to 70km away.

### Standards-based

GWS-5150 features a non-blocking switching architecture that forwards and filters packets at full wire-speed for maximum throughput. With MAC address autolearning and auto-aging, IEEE802.3x flow control for full-duplex mode and backpressure for half-duplex mode, you have powerful features sending your data throughout the network.

### Plug and Play, Flexible and Easy

GWS-5150 is plug-and-play so no configuration is required. Providing auto MDI/MDI-X cable detection on all ports eliminates the need for crossover cables or Uplink ports. Each port can be used as general ports or Uplink ports, and any port can be simply plugged into a server, a hub, a router or a switch, using a straight cable or crossover cable. Diagnostic LEDs which display link status and activity, allowing you to quickly detect and correct problems on the network.



1. 10/100Mbps Ports
2. 10/100/1000Mbps Ports
3. SFP Slot
4. Internal Power Socket

### Key Features

- 48 10/100 Mbps , 2 10/100/1000Mbps Half/Full Duplex, Switched RJ-45 Ports
- 1SFP Port Provides Fiber Connectivity for extended distance
- Supports Auto-negotiation and Auto-MDI/MDI-X on all ports
- Supports full-duplex IEEE 802.3x flow control
- Store-and-forward switching architecture
- Complies with IEEE 802.3, 802.3u and 802.3ab, 802.3z standards
- Wire-speed packet filtering and forwarding rate
- 8K MAC Address and 128KB buffer memory
- Large 15.6G switching bandwidth
- 19-inch rack-mountable

### Works Well With



**GVT-0301**  
Mini GBIC SFP transceiver, LX  
Single-Mode (10km)



**GNC-0105T**  
Gigabit Ethernet 32-bit PCI  
Card

## Technical Specifications

### Network Interface

#### Standard Compliance

IEEE 802.3 10Base-T Ethernet  
 IEEE 802.3u 100Base-TX Ethernet  
 IEEE 802.3ab 1000Base-T Ethernet  
 IEEE 802.3z 1000Base-X  
 IEEE 802.3x Flow control and Back Pressure

#### Network Connectivity

10/100 Mbps :48 x RJ-45 with Auto Negotiation  
 10/100/1000Mbps: 2x RJ-45 with Auto Negotiation  
 1 SFP module Interface

#### Switch Architecture

Store and Forward architecture  
 Back-plane: 15.6 Gbps

#### Mac Address

8K MAC address table

### Physical Specifications

#### Power Supply

100 ~ 240V AC/50~60Hz Internal Power

#### LED

Power, Link/Activity

#### Operating Environment

Temperature: 0°C ~ 40°C  
 Humidity: 10% ~ 90% (Non-condensing)  
 Storage: -40°C ~ 70°C

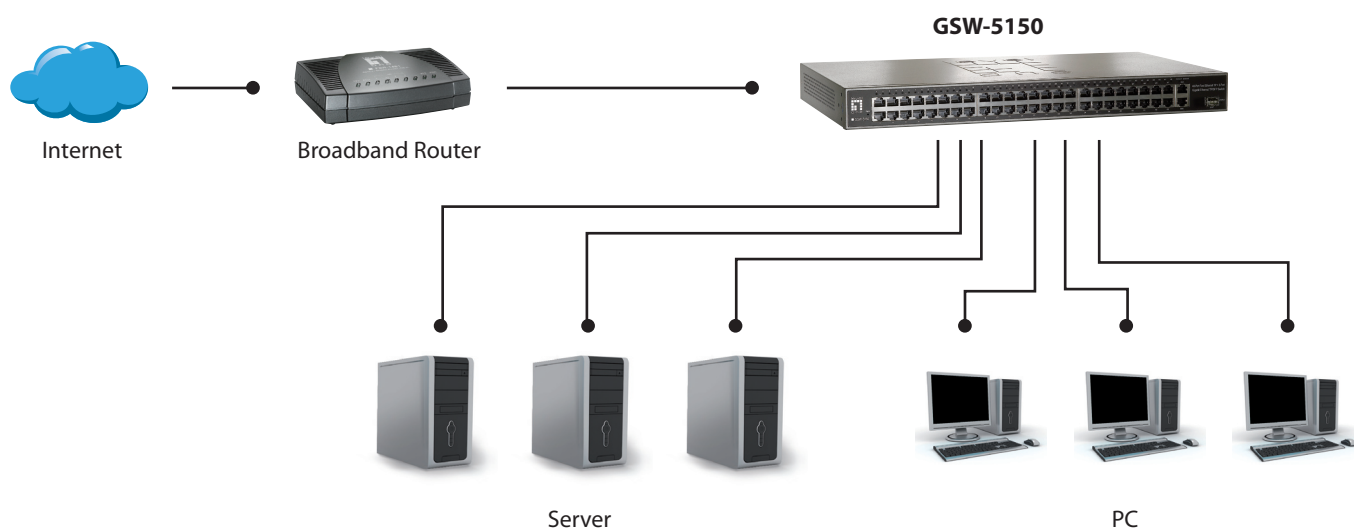
#### Dimensions

440mm (W) x 260 mm (D) x 44mm (H)

#### Certification

FCC Class A, CE

## Product Diagram



## Order Information

### Package Contents

**GSW-5150:** 48 FE + 2 GE + 1 GE SFP Switch

GSW-5150  
 Power Cord  
 Rack-mount kit  
 User Manual