

APPLICATOR STYLE CONVERSION CHART. Table with columns: CONVERT TO, PART NUMBERS REQUIRED, FEED TYPE, DESCRIPTION, REVISION, PART NUMBER.

APPLICATOR DATA. Table with columns: CRIMP SIZE, TYPE, WIRE, INSUL.

TERMINAL DATA: G&H TERMINAL LEAR CRIMP SPECIFICATION. Table with columns: TE TERMINAL, G&H TERMINAL.

TERMINAL DATA: G&H TERMINAL TE CRIMP SPECIFICATION. Table with columns: TE TERMINAL, G&H TERMINAL.

WIRE SIZE, CRIMP HEIGHT mm [INCH], CRIMP HEIGHT REFERENCE SETTING. Table with columns: WIRE SIZE, CRIMP HEIGHT mm [INCH], CRIMP HEIGHT REFERENCE SETTING.

WIRE SIZE, CRIMP HEIGHT mm [INCH], CRIMP HEIGHT REFERENCE SETTING. Table with columns: WIRE SIZE, CRIMP HEIGHT mm [INCH], CRIMP HEIGHT REFERENCE SETTING.

- RECOMMENDED SPARE PARTS. GREASE BEARING SURFACES LIGHTLY. LUBRICATE DAILY PER THE APPLICATOR INSTRUCTION SHEET SUPPLIED WITH THE APPLICATOR. APPLICATOR SPECIFIC DATA TO BE ENTERED INTO BLANK MEMORY CHIP AT ASSEMBLY. ADJUSTMENT OF THE STRIPPER MAY BE REQUIRED WHEN MOVING THE APPLICATOR BETWEEN BENCH AND LEADMAKER APPLICATIONS. APPLY PART NUMBER 1-23419-5 LOCTITE TO THREADS OF ITEMS 50 & 62. GREASE THREADS, GROOVE AND O-RING ON ITEMS 35 & 252. MAGNET, ITEM 166 MUST BE ORIENTED CORRECTLY IN ORDER TO PROPERLY ACTUATE THE COUNTER. CRIMP HEIGHT REFERENCE SETTING WAS THE SETTING USED WHEN THE APPLICATOR WAS QUALIFIED AT THE FACTORY. SPARE FEED CAM STORAGE LOCATION REFER TO INSTRUCTION SHEET FOR ADDITIONAL INFORMATION. THE RECOMMENDED SET-UP FOR END FEED APPLICATORS IS POST-FEED WITH ITEM 2119653-1. WHEN ASSEMBLING -6 NON-CRIMP HEIGHT ADJUST APPLICATOR USE SHIM PACK 2119957-2 TO ALIGN APPLICATOR'S MAXIMUM WIRE CRIMP HEIGHT AT NORMAL TERMINATOR SHUT HEIGHT

\*WARNING ON INSTALLATION, SET WIRE DISC, ITEM 40 TO LARGEST WIRE SIZE SETTING. USE OF SETTINGS BELOW MINIMUM REQUIRED CRIMP HEIGHT SETTING WILL CAUSE DAMAGE TO CRIMP TOOLING.

Table with columns: PART NO, DESCRIPTION, ITEM NO. Lists various components like APPLICATOR SHIM PACK, O-RING, PUSH ROD, BUSHING, DETENT PIN, SPRING, RAM, AMP STYLE, END FEED.

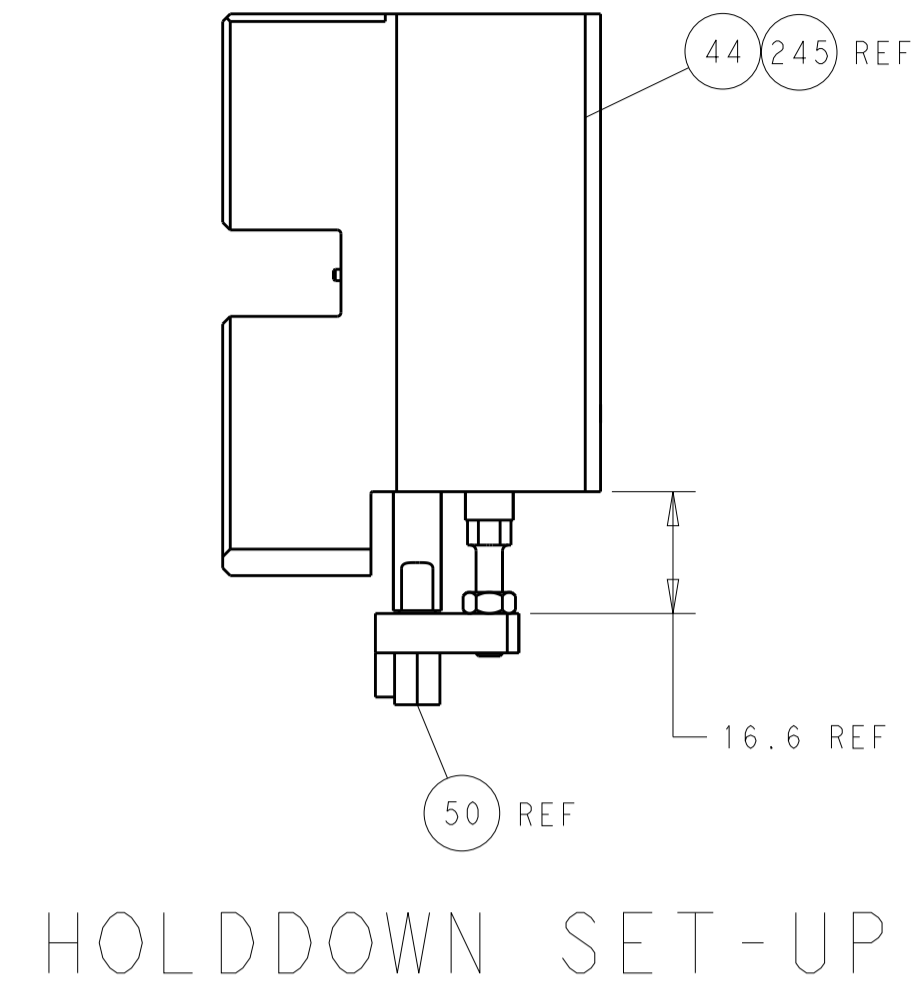
ATLANTIC VERSION Shown on sheets 1 of 4 & 2 of 4 (Pacific version shown on sheets 3 of 4 & 4 of 4)

SET UP GAUGE 2119599-2. REVISIONS table with columns: REVISION, DESCRIPTION, DATE, DWN, APVD.

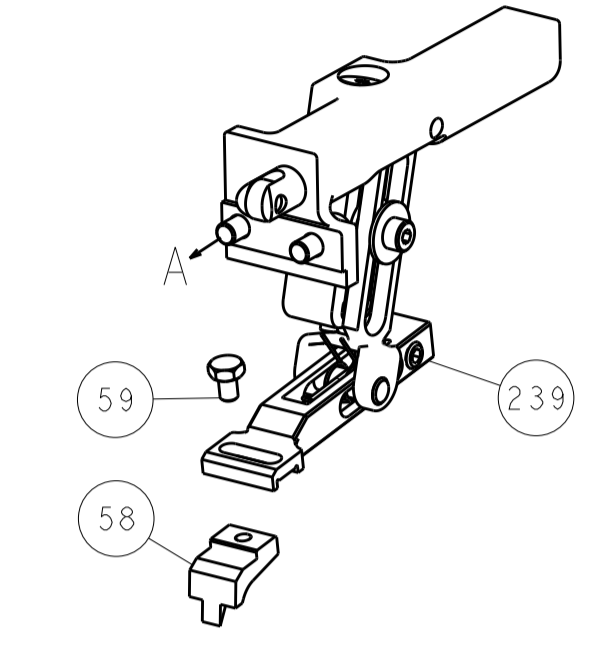
Large table with columns: P, LTM, DESCRIPTION, DATE, DWN, APVD. Lists various parts like CAM, SNAIL, INSULATION ADJUSTMENT, WASHER, WAVE SPRING, RETAINER, SHCS, MECHANICAL FEED ASSEMBLY, TAG, IDENTIFICATION, FEED FINGER ASSEMBLY, SPRING, COMPRESSION, GUIDE PIN, RING, MAGNET, COUNTER, SPRING, PIN, RETAIN, MEMORY CHIP, SPACER, DOCUMENTATION PACKAGE, SCR, SET, NUT, TORQUE, PAWL, STANDOFF, FEED CAM, APPLICATOR BASIC ASSEMBLY, RAM, AMP STYLE, DISC, APPLICATOR SHIM PACK, RAM WASHER, FA HEAD, BOLT, WASHER, SCR, STRIPPER, STUD, PLATE, STRIP GUIDE, SPRING, DRAG, STRIP GUIDE, STRIP GUIDE, FRONT, SCR, SPACER, SPACER, HOLD-DOWN, PLATE, REAR SHEAR, PLATE, FRONT SHEAR, ANVIL, BLADE, SLUG, SPACER, BLOCK, CRIMPER, SPACER, CRIMPER, CRIMPER, WIRE.

TE Connectivity form with fields: DIMENSIONS, TOLERANCES UNLESS OTHERWISE SPECIFIED, MATERIAL, FINISH, WEIGHT, SCALE, SHEET 1 OF 4.

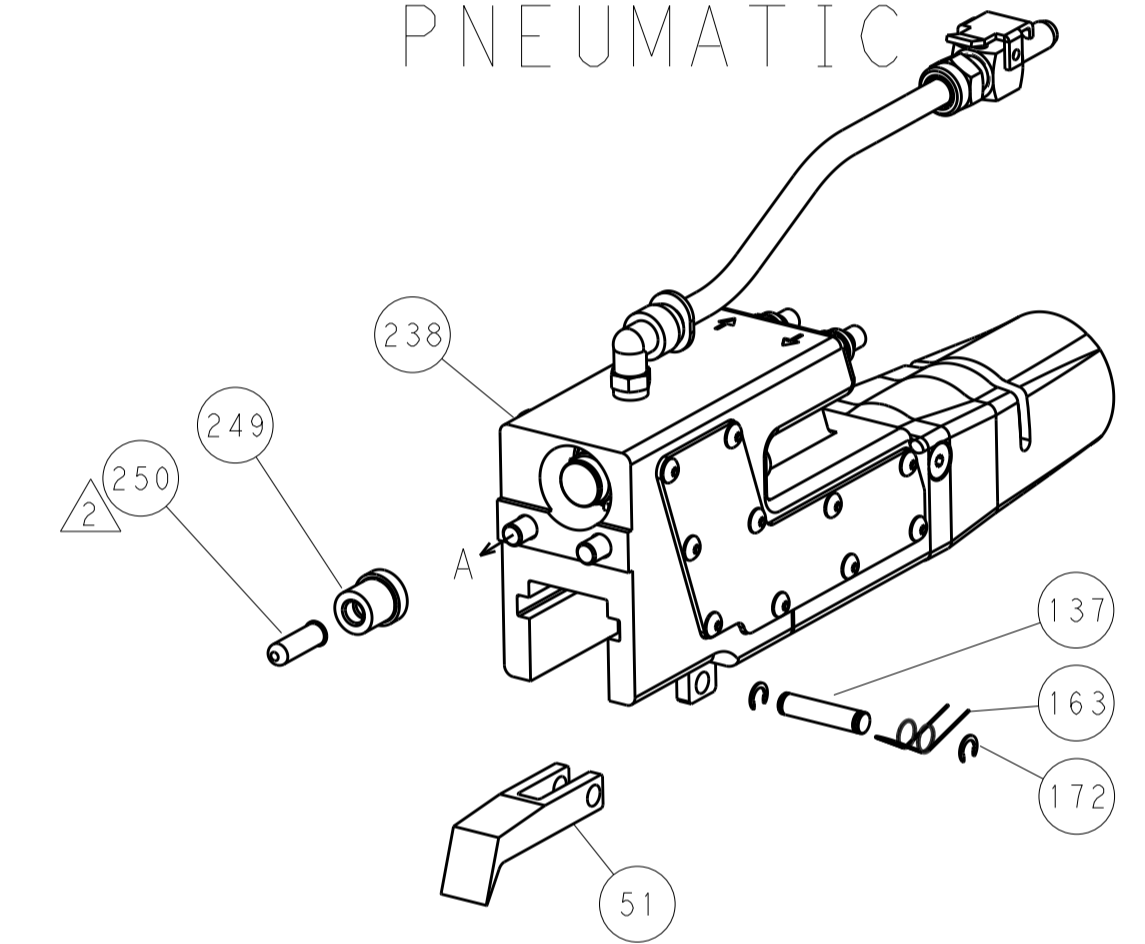
LOC		DIST		REVISIONS			
A	66	P	LTM	DESCRIPTION	DATE	OWN	APVD
		-	-	SEE SHEET 1	-	-	-



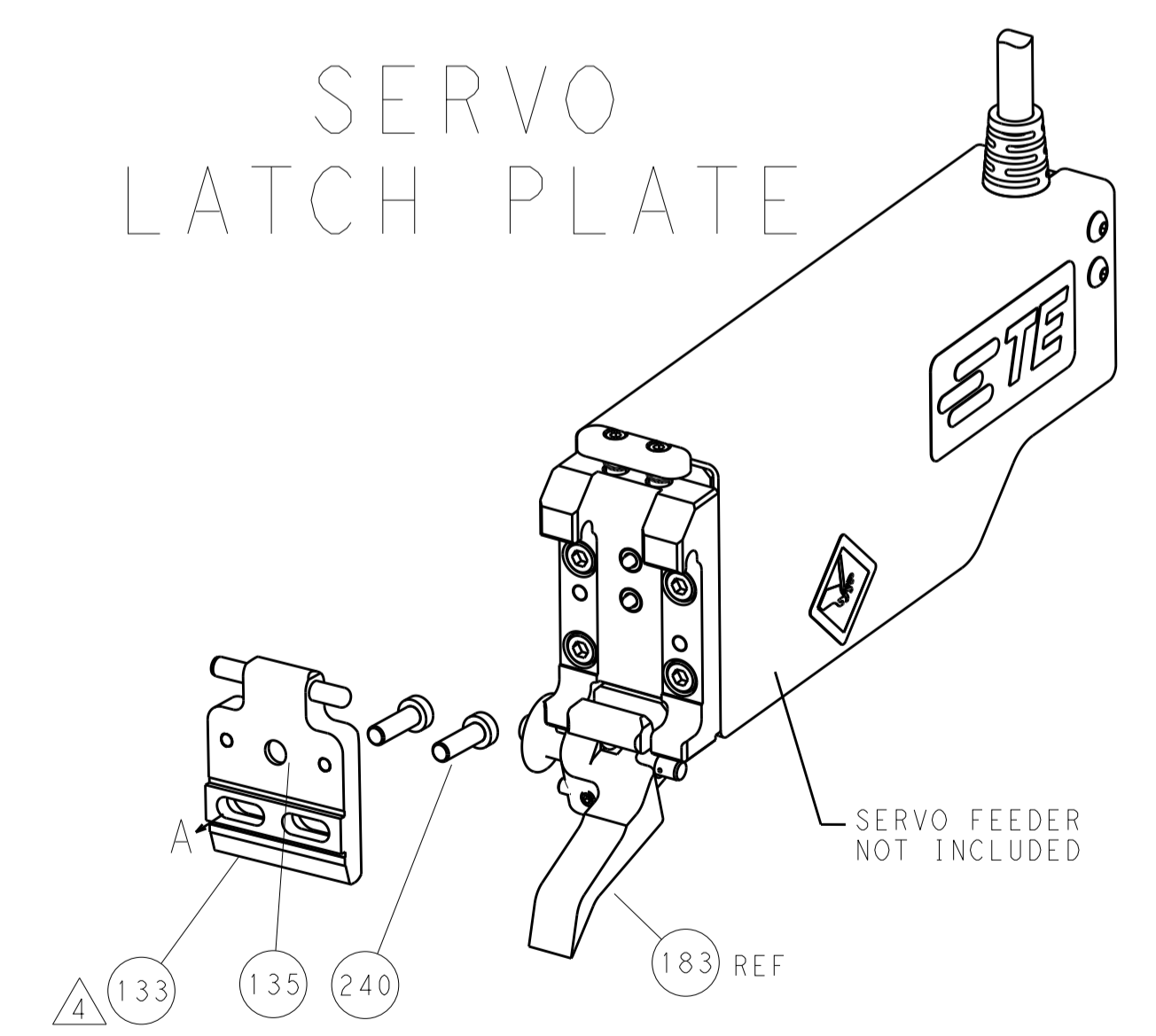
FEED TYPE  
MECHANICAL



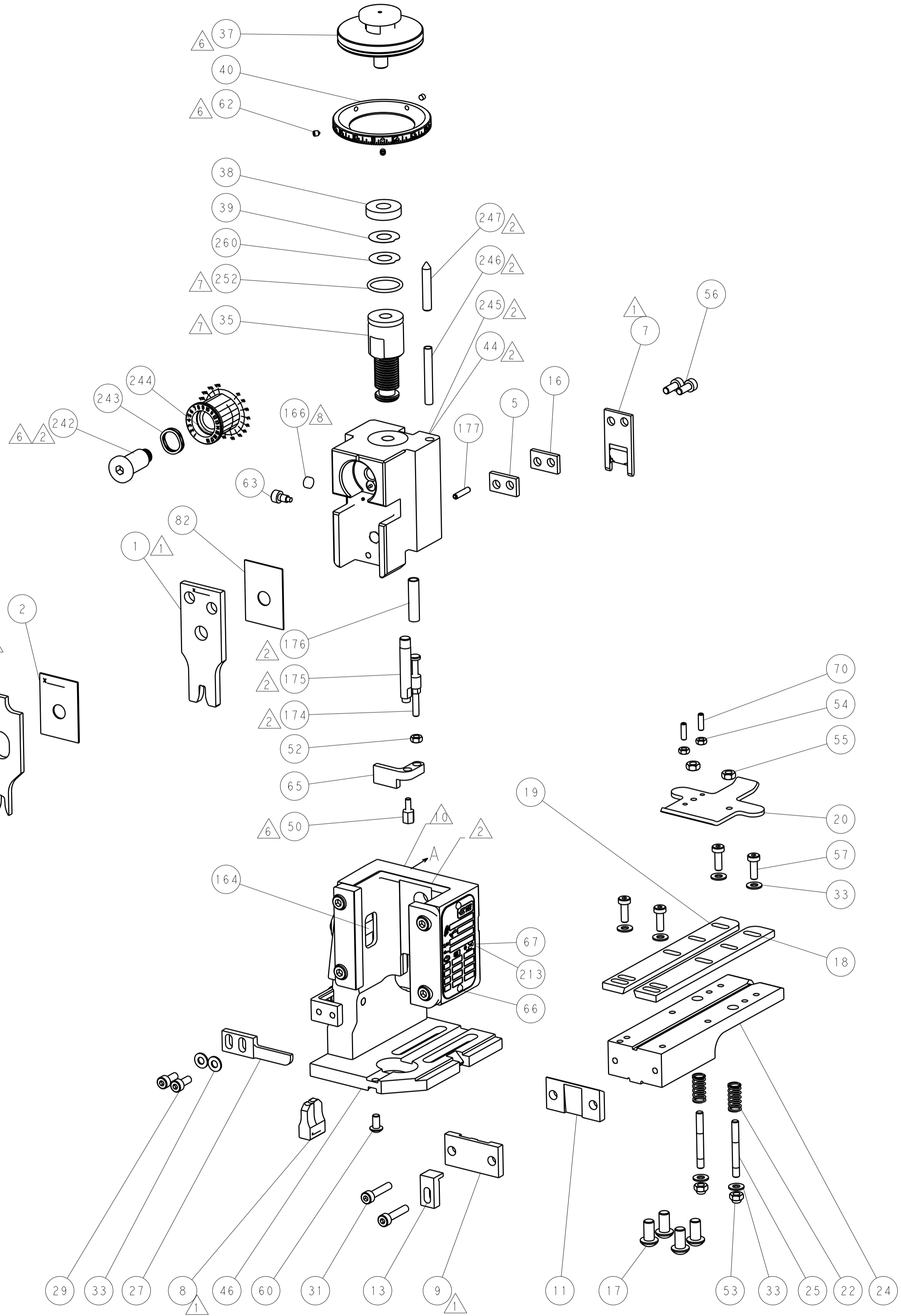
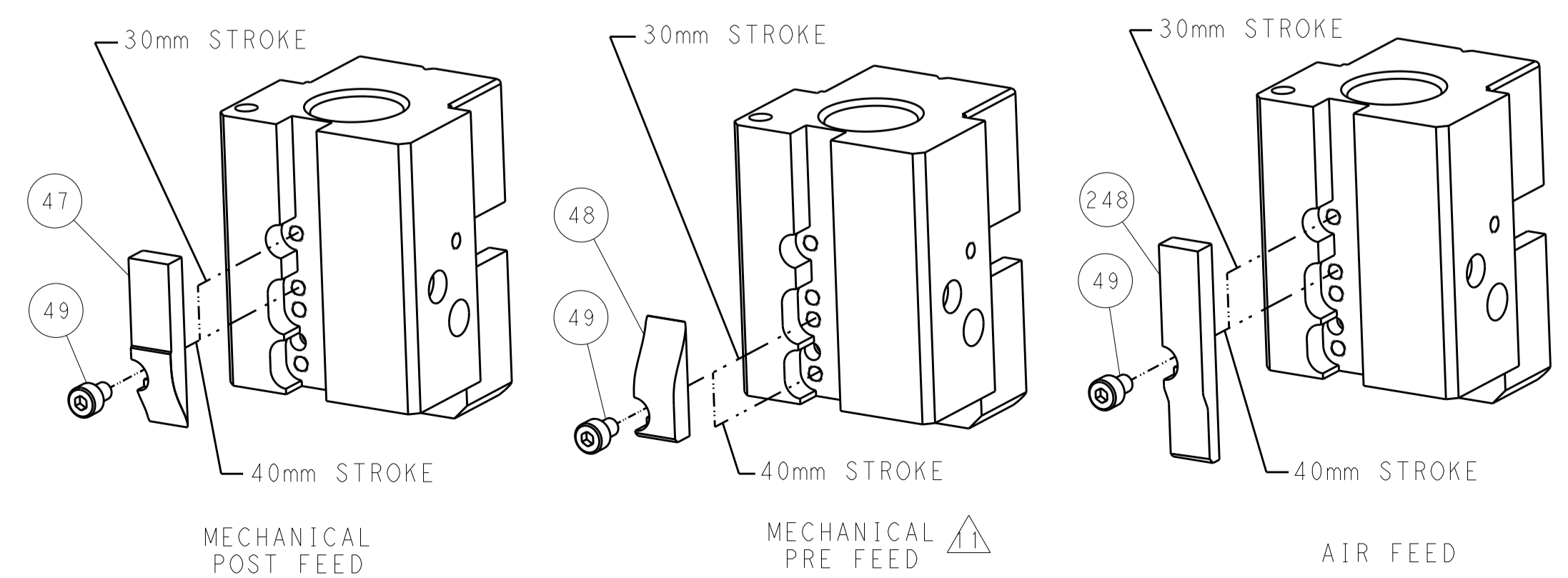
PNEUMATIC



SERVO  
LATCH PLATE



CAM POSITIONS



ATLANTIC VERSION  
 Shown on sheets 1 of 4 & 2 of 4  
 (Pacific version shown on sheets 3 of 4 & 4 of 4)

DIMENSIONS:		TOLERANCES UNLESS OTHERWISE SPECIFIED:		DWN Y. YIN 31OCT2013		TE Connectivity	
mm		0 PLC ±0.5		CHK G. BAILEY 31OCT2013		Harrisburg, PA 17105-3608	
Ø		1 PLC ±0.13		APVD JJ. GUO 31OCT2013		NAME	
H		2 PLC ±0.013		PRODUCT SPEC		Ocean End Feed	
L		3 PLC ±0.013		APPLICATION SPEC		Applicator	
R		4 PLC ±0.001		WEIGHT		SIZE CAGE CODE DRAWING NO	
ANGLES		FINISH		A11 00779 ©=2150395		RESTRICTED TO	
MATERIAL		Customer Accessible Production Drawing		SCALE 1:1		SHEET 2 OF 4	
						REV B1	

Table with columns: PACIFIC VERSION TERMINATOR INTERFACE ADAPTER, PART NUMBER, REVISION, DESCRIPTION, FEED TYPE. Includes a diagram of the terminator.

APPLICATOR STYLE CONVERSION CHART. Table with columns: CONVERT TO, PART NUMBERS REQUIRED. Lists conversion paths for Pneumatic, Servo, and Mechanical feeds.

APPLICATOR DATA. Table with columns: CRIMP SIZE, WIRE, INSUL. Includes applicator instructions 408-10390.

TERMINAL DATA: G&H TERMINAL LEAR CRIMP SPECIFICATION. Table with columns: TE TERMINAL, G&H TERMINAL, TE TERMINAL, G&H TERMINAL.

TERMINAL DATA: G&H TERMINAL TE CRIMP SPECIFICATION. Table with columns: TE TERMINAL, G&H TERMINAL, TE TERMINAL, G&H TERMINAL.

Table with columns: WIRE SIZE, CRIMP HEIGHT mm [INCH], CRIMP HEIGHT REFERENCE SETTING. Includes crimp height diagrams.

Table with columns: WIRE SIZE, CRIMP HEIGHT mm [INCH], CRIMP HEIGHT REFERENCE SETTING. Includes crimp height diagrams.

- RECOMMENDED SPARE PARTS
GREASE BEARING SURFACES LIGHTLY
LUBRICATE DAILY PER THE APPLICATOR INSTRUCTION SHEET SUPPLIED WITH THE APPLICATOR.
APPLICATOR SPECIFIC DATA TO BE ENTERED INTO BLANK MEMORY CHIP AT ASSEMBLY...

\*WARNING
ON INSTALLATION, SET WIRE DISC, ITEM 40 TO LARGEST WIRE SIZE SETTING. USE OF SETTINGS BELOW MINIMUM REQUIRED CRIMP HEIGHT SETTING WILL CAUSE DAMAGE TO CRIMP TOOLING.

Table with columns: PART NO, DESCRIPTION, ITEM NO. Lists spare parts like FINE ADJUST HEAD ASM, PUSH ROD, BUSHING, etc.

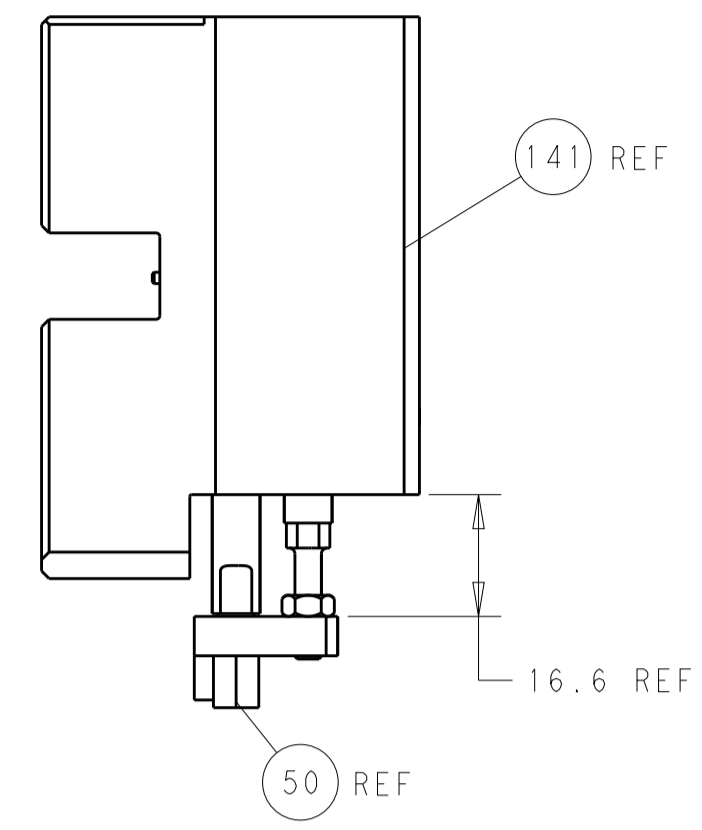
PACIFIC VERSION
Shown on sheets 3 of 4 & 4 of 4
(Atlantic version shown on sheets 1 of 4 & 2 of 4)

Table with columns: SET UP GAUGE, DIST, REVISIONS. Includes revision history table.

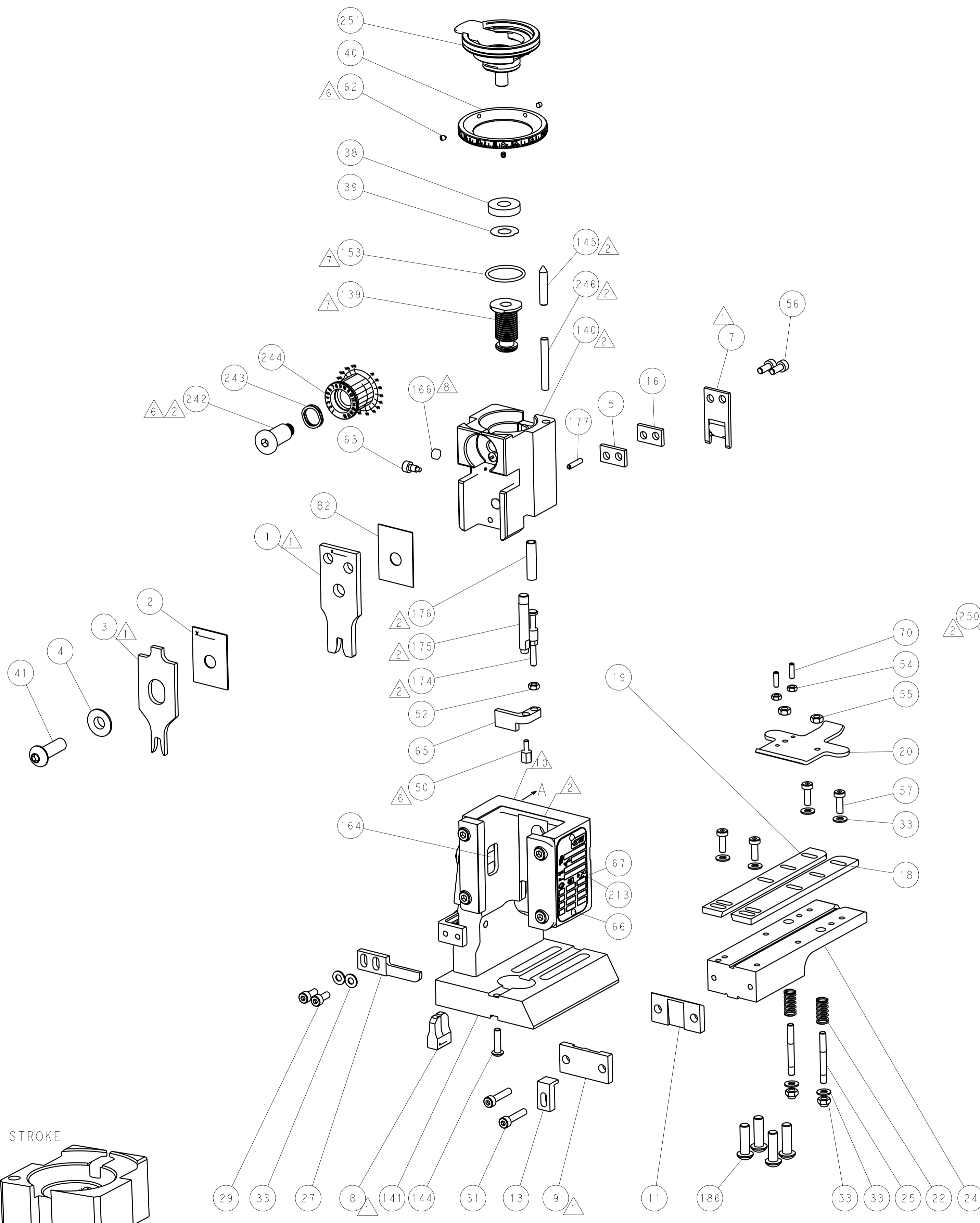
Large table with columns: QTY, PART NO, DESCRIPTION, ITEM NO. Lists various components and their quantities, including retainers, shcs, springs, pins, and crimpers.

Technical drawing information block including dimensions, tolerances, material, and drawing title 'Ocean End Feed Applicator'.

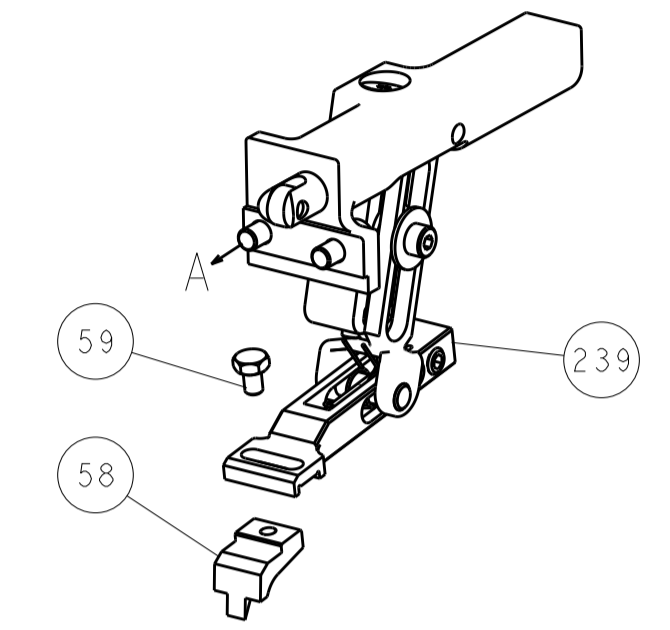
LOC		DIST		REVISIONS			
A	66	P	LTM	DESCRIPTION	DATE	OWN	APVD
				SEE SHEET 1			



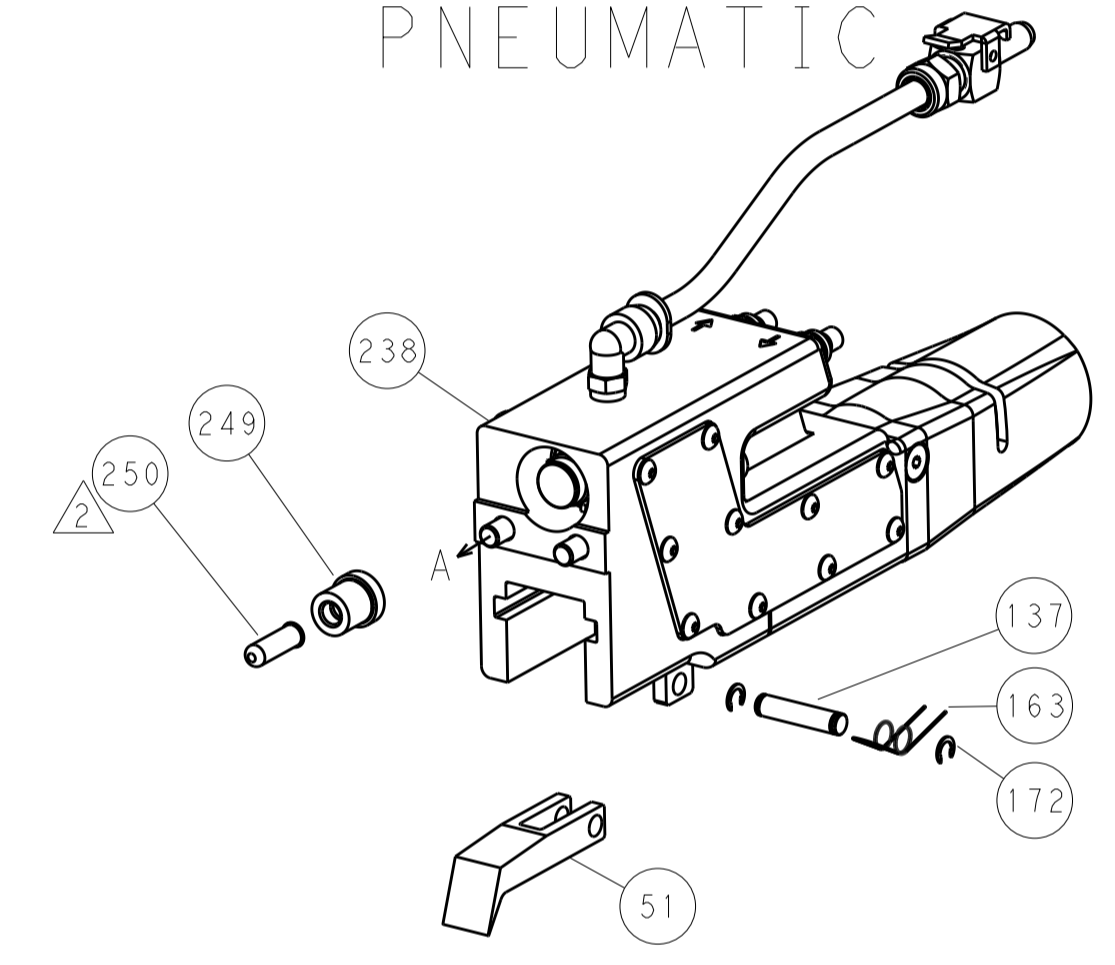
HOLDDOWN SET-UP



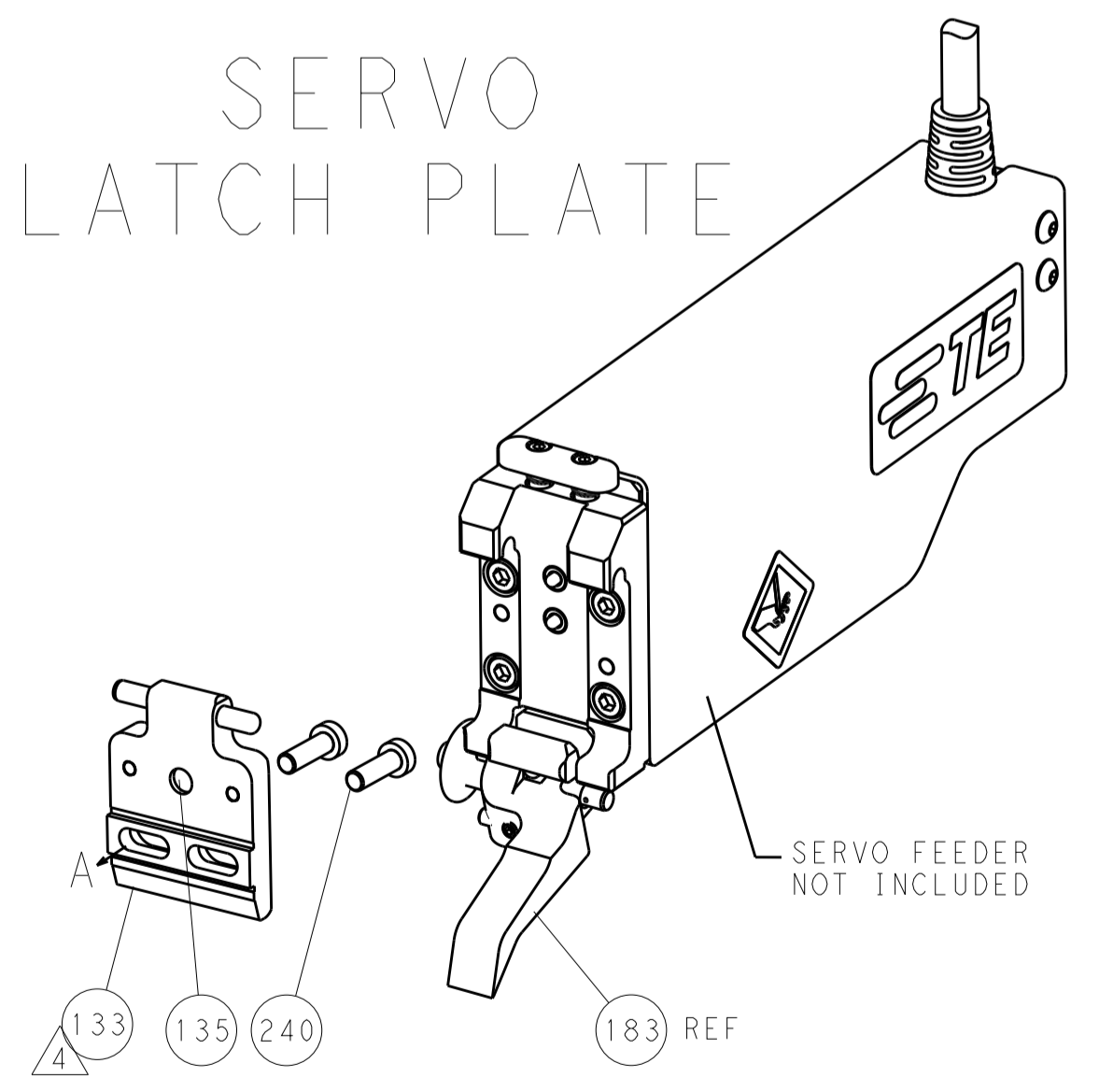
FEED TYPE  
MECHANICAL



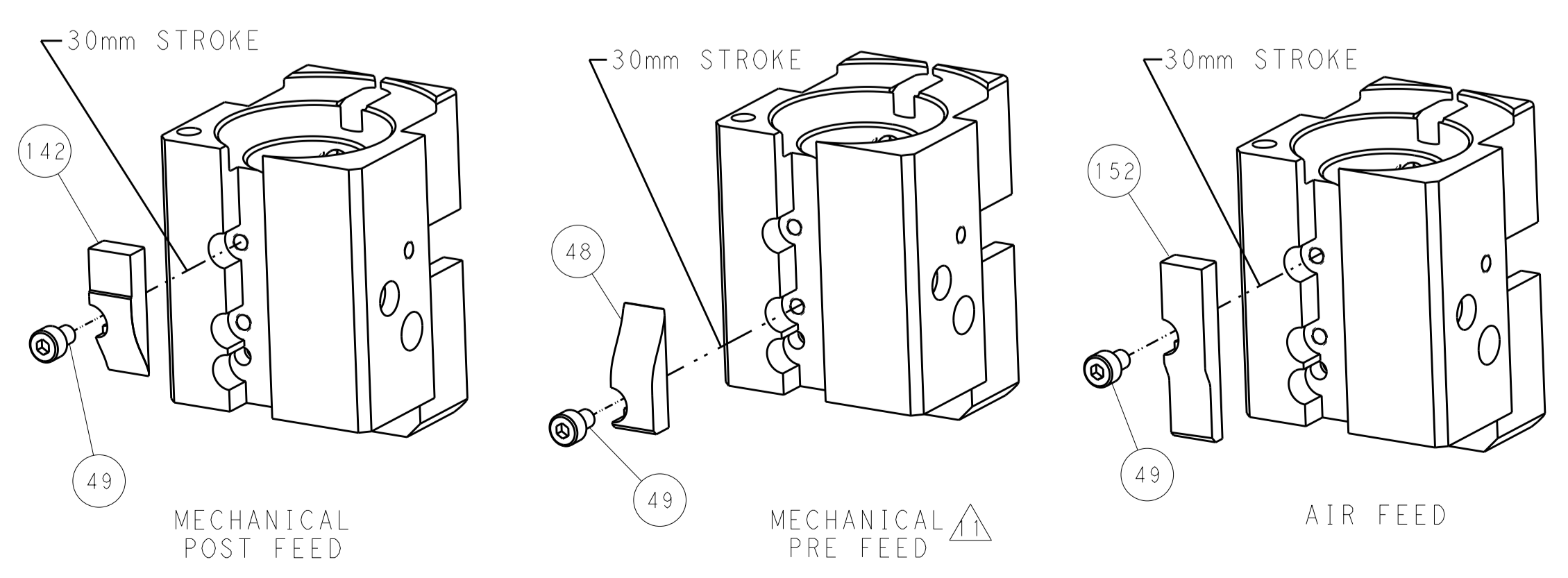
PNEUMATIC



SERVO  
LATCH PLATE



CAM POSITIONS



PACIFIC VERSION  
 Shown on sheets 3 of 4 & 4 of 4  
 (Atlantic version shown on sheets 1 of 4 & 2 of 4)

DIMENSIONS:		TOLERANCES UNLESS OTHERWISE SPECIFIED:		DWN Y. YIN 31OCT2013		CHK G. BAILEY 31OCT2013		APVD JJ. GUO 31OCT2013		NAME		TE Connectivity Harrisburg, PA 17105-3608	
mm	0 PLC ±0.5	1 PLC ±0.5	2 PLC ±0.13	3 PLC ±0.13	4 PLC ±0.013	5 PLC ±0.0013	ANGLES ±0.0001	PRODUCT SPEC	APPLICATION SPEC	SIZE	CAGE CODE	DRAWING NO	RESTRICTED TO
MATERIAL	FINISH	WEIGHT	SCALE	SHEET	OF	REV	Customer Accessible Production Drawing	SCALE 1:1	SHEET 4	OF 4	REV B1		