

Surface Mount Frequency Mixer

RMS-11F+

Level 7 (LO Power +7dBm) 350 to 2000 MHz



CASE STYLE: TT240

Maximum Ratings

Operating Temperature	-40°C to 85°C
Storage Temperature	-55°C to 100°C
RF Power	200mW
IF Current	40mA
Permanent damage may occur if any of these limits are exceeded.	

Pin Connections

LO	1
RF	4
IF	5
GROUND	2,3,6

Features

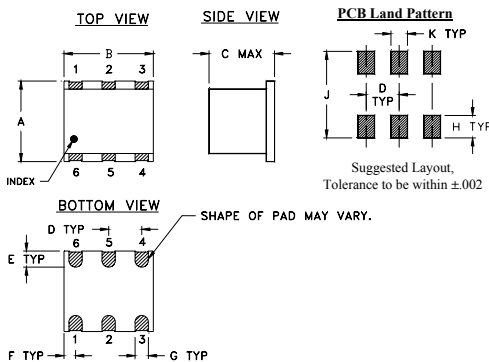
- excellent L-R isolation, 36 dB typ.
- conversion loss, 55 dB typ.
- small size, 0.25"x0.31"x0.2"

Applications

- GSM
- GPS
- PCS
- satellite distribution

+RoHS Compliant
The +Suffix identifies RoHS Compliance. See our web site for RoHS Compliance methodologies and qualifications

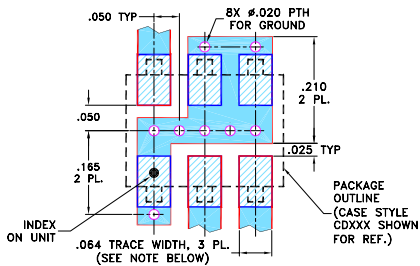
Outline Drawing



Outline Dimensions (inch/mm)

A	B	C	D	E	F
.250	.31	.20	.100	.050	.055
6.35	7.87	5.08	2.54	1.27	1.40
G	H	J	K	wt	
.040	.070	.270	.050	grams	
1.02	1.78	6.86	1.27	0.50	

Demo Board MCL P/N: TB-03 Suggested PCB Layout (PL-052)



- NOTES: 1. TRACE WIDTH IS SHOWN FOR ROGERS R04350B WITH DIELECTRIC THICKNESS .030" ± .002"; COPPER: 1/2 OZ. EACH SIDE. FOR OTHER MATERIALS TRACE WIDTH MAY NEED TO BE MODIFIED.
2. BOTTOM SIDE OF THE PCB IS CONTINUOUS GROUND PLANE.
- DENOTES PCB COPPER LAYOUT WITH SMOBC (SOLDER MASK OVER BARE COPPER)
 - DENOTES COPPER LAND PATTERN FREE OF SOLDER MASK

Notes

- A. Performance and quality attributes and conditions not expressly stated in this specification document are intended to be excluded and do not form a part of this specification document.
B. Electrical specifications and performance data contained in this specification document are based on Mini-Circuit's applicable established test performance criteria and measurement instructions.
C. The parts covered by this specification document are subject to Mini-Circuits standard limited warranty and terms and conditions (collectively, "Standard Terms"); Purchasers of this part are entitled to the rights and benefits contained therein. For a full statement of the Standard Terms and the exclusive rights and remedies thereunder, please visit Mini-Circuits' website at www.minicircuits.com/MCLStore/terms.jsp

Electrical Specifications

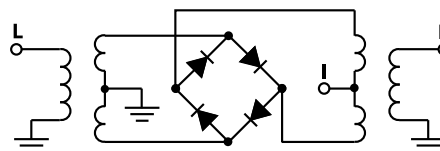
FREQUENCY (MHz)	CONVERSION LOSS (dB)	LO-RF ISOLATION (dB)						LO-IF ISOLATION (dB)						IP3 at center band (dBm)
		L		M		U		L		M		U		
$f_L - f_U$	\bar{X} σ Max.	Typ.	Min.	Typ.	Min.	Typ.	Min.	Typ.	Min.	Typ.	Min.	Typ.	Min.	Typ.
350-2000 DC-400	5.5 .20 7.0 9.2	37	26	36	20	32	20	22	14	29	20	28	20	12

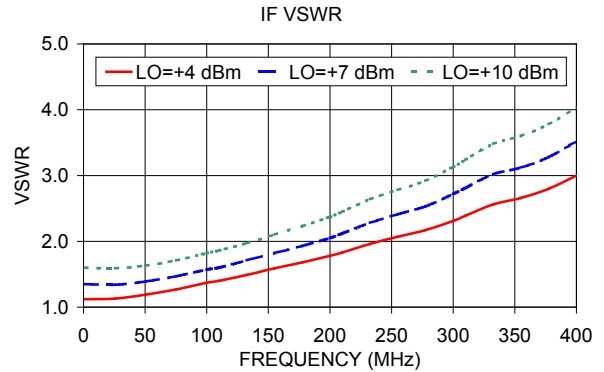
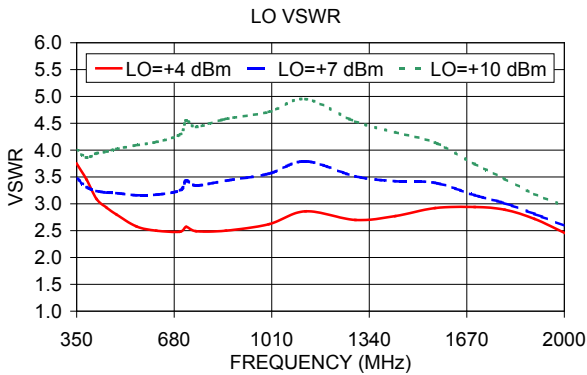
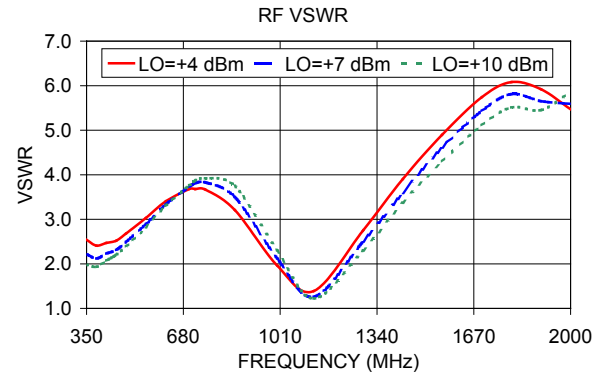
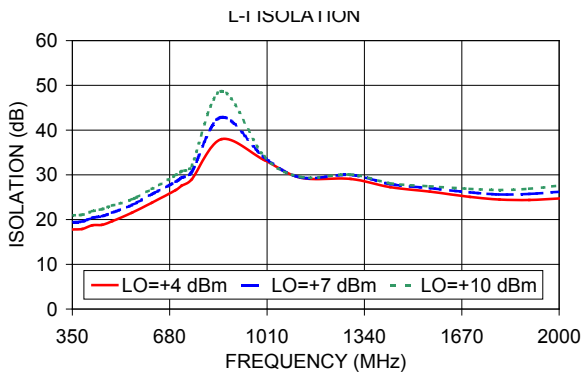
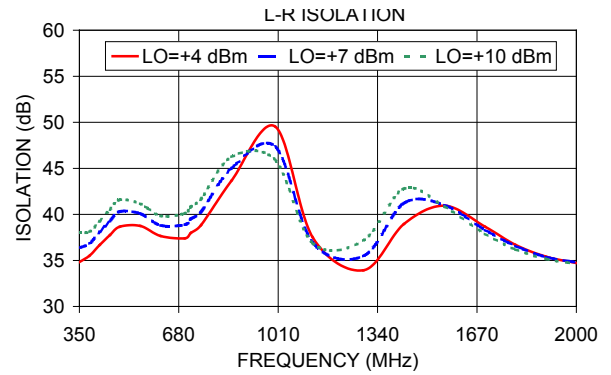
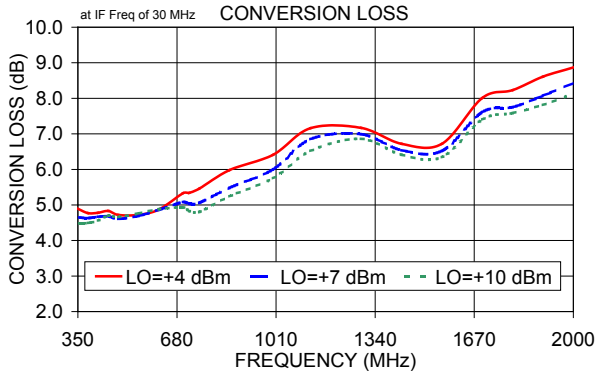
1 dB COMP: +1 dBm typ. L = 350-750 MHz M = 750-1000 MHz U = 1000-2000 MHz
m = 350-1000 MHz

Typical Performance Data

Frequency (MHz)		Conversion Loss (dB)	Isolation L-R (dB)	Isolation L-I (dB)	VSWR RF Port (:1)	VSWR LO Port (:1)
RF	LO	LO +7dBm	LO +7dBm	LO +7dBm	LO +7dBm	LO +7dBm
350.00	380.00	4.65	36.37	19.43	2.22	3.48
383.67	413.67	4.63	36.83	19.55	2.12	3.31
417.35	447.35	4.67	38.11	20.39	2.23	3.24
451.02	481.02	4.68	39.27	20.76	2.31	3.21
484.69	514.69	4.61	40.31	21.53	2.49	3.20
552.04	582.04	4.69	40.08	23.23	2.89	3.16
619.39	649.39	4.86	38.80	25.64	3.33	3.17
700.00	730.00	5.08	38.87	28.43	3.73	3.25
720.41	750.41	5.03	39.51	29.35	3.81	3.43
754.08	784.08	5.06	40.27	30.58	3.83	3.34
855.10	885.10	5.48	45.01	42.88	3.50	3.43
1000.00	1030.00	6.00	47.36	33.91	2.12	3.56
1124.49	1154.49	6.85	36.96	29.41	1.26	3.79
1292.86	1262.86	6.99	35.46	29.97	2.50	3.51
1427.55	1397.55	6.54	41.21	27.91	3.59	3.42
1562.24	1532.24	6.52	41.00	27.02	4.61	3.39
1696.94	1666.94	7.61	38.30	26.09	5.43	3.16
1797.96	1767.96	7.75	36.56	25.61	5.81	3.01
1898.98	1868.98	8.07	35.37	25.71	5.65	2.81
2000.00	1970.00	8.43	34.77	26.20	5.59	2.59

Electrical Schematic





Notes

- A. Performance and quality attributes and conditions not expressly stated in this specification document are intended to be excluded and do not form a part of this specification document.
- B. Electrical specifications and performance data contained in this specification document are based on Mini-Circuit's applicable established test performance criteria and measurement instructions.
- C. The parts covered by this specification document are subject to Mini-Circuits standard limited warranty and terms and conditions (collectively, "Standard Terms"); Purchasers of this part are entitled to the rights and benefits contained therein. For a full statement of the Standard Terms and the exclusive rights and remedies thereunder, please visit Mini-Circuits' website at www.minicircuits.com/MCLStore/terms.jsp

