

# KR 2617-1 Bandpass Filter

## General Description

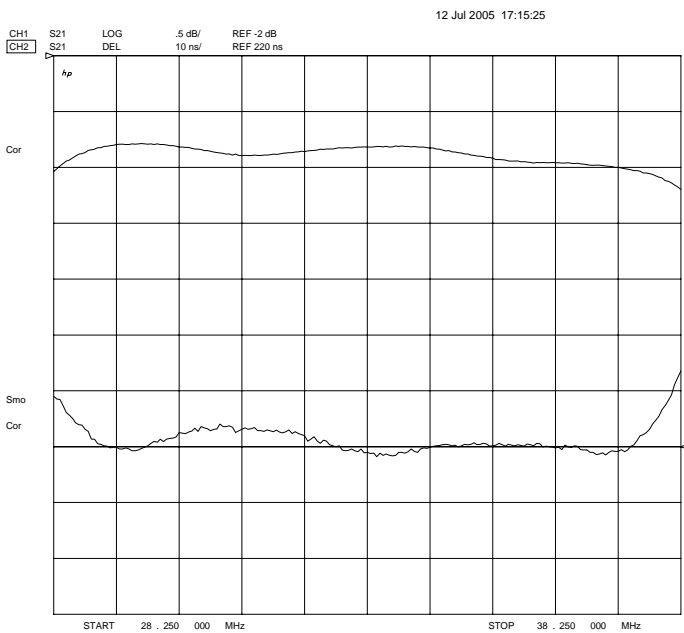
KR 2617-1 is a 33.25 MHz group delay equalized surface mount bandpass filter. Other center frequencies and bandwidths available. Please consult the factory.

## Features

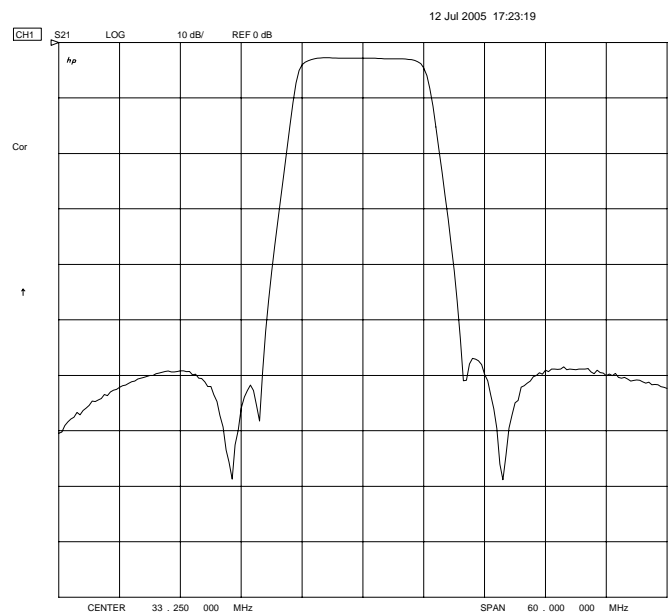
- Surface Mount Package
- Sharp Transition to Stopband
- Group Delay Equalized
- >50 dB Stopband
- 50  $\Omega$  Source and Load

## Typical Performance

**Passband Amplitude & Group Delay**  
(0.5 dB/div & 10 nsec/div)



**Overall Response**  
(10 dB/div)



KR Electronics, Inc.  
91 Avenel Street  
Avenel, NJ 07001

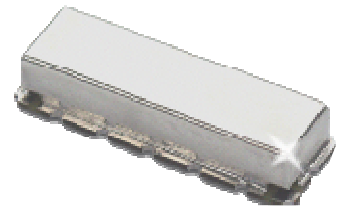
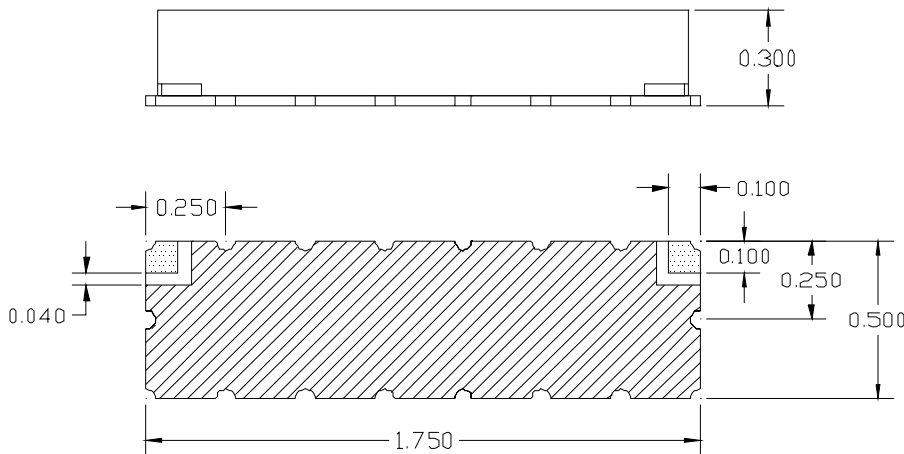
Web www.krfilters.com  
Email sales@krfilters.com  
Phone (732) 636-1900  
Fax (732) 636-1982

# KR 2617-1 Bandpass

## Specifications

Parameter	Specification
Filter type	Bandpass
Center Frequency	33.25 MHz
Insertion Loss	< 6 dB (< 3 dB typical)
Min 1 dB Bandwidth	10 MHz
Max 50 dB Bandwidth	21 MHz
Source and Load	50 $\Omega$

## Physical Dimensions



**Notes:**

1. Surface mount package — Metal cover, open frame
2. Dimensions in inches
3. Use SN60 or SN63 solder during installation max reflow temperature is 205° C for 15 sec maximum
4. If boards are cleaned after installation, units must be completely dried to remove any entrapped moisture that will effect electrical performance