



# Central Management System



FCS-9900

S/W Version: 1.6

## Overview

The LevelOne Central Management System (CMS) is a powerful system designed for large-scale and high level enterprise projects which takes traditional system out of the control room through Internet access. The network-based key operation system can manage unlimited combinations of analogue and network cameras worldwide, unlimited work stations throughout different locations. CMS can manage all LevelOne product lines including CamSecure Pro, NDVR Hybrid and forthcoming new NVR series. It has the most powerful alarm management system and can control unlimited matrices or viewing consoles in the centralized control room. CMS is based on an open architecture Client-Server Structure that can be expanded as your business grows with no limits.

## Map Centric Operation

The controls and operation of CMS is clear cut and map centric. CMS functions are accessible directly from the E-map. Security operator can open live video window, instant playback window, remote backup, query alarm, trigger digital output devices, check system status and more.

## Instant Alarm Response

Real-time alarm management supports up to 45 alarm types, 6 video analytic events, alarm priorities and independent alarm coverage and data mining tool. Alarm Guide provides operators an instant know-how to respond to different alarm immediately. CMS Matrix offers a video wall for users to get video and manage alarm efficiently and instantly.



## Key Features

- Client-server distributed architecture & centralized management
- Access and control unlimited cameras, I/O devices, operator clients and display matrices
- Unlimited layers of E-map indicates cameras, I/O devices and server locations
- Multiple servers can be located at multiple sites
- H.264, MPEG4, MJPEG, and MxPEG video compressions
- Real time alarm management and instruct the operator to respond
- Unlimited Matrix display wall that stream and display live video from CamSecure Pro
- Supports latest Windows OS included Windows 7 64 bit and Windows 2008 R2 64 bit

## Related Product



**FCS-9464**  
CamSecure Pro



**FCS-9448**  
CamSecure Pro

## Technical Specification

### CMS Component

#### Alarm Database

SQL Server 2005 Express as database to store all alarms

#### Central Server

Store the site map data by hierarchical structures  
Directly connect to surveillance server to get alarm notifications

Provide TCP service for CMS client access through network  
Registers different time zones into UTC format

#### Notification

Email  
SMS Message

### E-Map

#### Map Tree

Unlimited level of site map

#### Map Format

BMP, GIF, JPEG, PNG and TIFF

#### Surveillance Servers

New / Edit / Delete / Disable or Enable

#### Cameras

New / Edit / Delete / Disable or Enable

#### Navigation Operation

Zoom In / Zoom Out / Drag & Drop

#### Indicators

Indicators for maps, servers, cameras, I/O devices and POS  
Indicator icons support image format with alpha channel (TIFF)  
Display camera coverage  
Easy to find device on Map and Matrix View

#### Instant Status Notification

Shows corresponding icon nearby device icons to notify users of the events automatically

#### Operation

Open Last Alarm  
Open Live Video Window  
Open Instant Playback Window  
Backup Recorded Video  
View Server Status Report  
Search POS transaction data

#### Pop-up Window

Live popup window to use audio/talk functions  
Show live video with PTZ control panel  
Set stream profile to change video quality  
Snapshot and POS transaction overlay  
Remote playback for replay recorded video and audio

### Alarm Management

#### Alarm Type

Video Signal Abnormal  
Digital Input Trigger (Normal / Emergency)  
POS Alarm Trigger  
Network Abnormal  
DVR / NVR Abnormal  
Motion / Missing / Foreign / Focus / Blocked  
Low Disk Space  
CPU temperature High  
Fan Speed Low

#### Action when Alarmed

Instant notifications on map and event list  
Go to specific map layer  
Play sounds  
Automatically show live video on popup window  
Automatically show live video on live matrix system  
Send SMS  
Send Email

#### Viewing

Filter tools to survey existing alarm history

#### Pop-up

Show a specific alarm with image preview  
Print a specific alarm with image preview

#### Advanced Alarm Search

Provides a comprehensive set of filters to search events by Alarm Name, Owner Name, Alarm Status, Alarm Priority and Date / Time period

### Matrix System

#### Live Viewing

Up to 64 concurrent cameras

#### Grid Type

Standard Screen – 1 / 4 / 9 / 12+1 / 16 / 25 / 36 / 49 / 64  
Wide Screen – 1+3 / 2+4 / 3+8 / 12 / 48

#### Pop-up

Shows the live video associated with alarms

#### PTZ Panel

Floating PTZ panel to manipulate cameras

#### Joystick Support

Control PTZ camera by Joystick via CMS Client

### Remote Playback

Up to 16 concurrent cameras  
1 / 4 / 9 / 16 Grid Type  
Export to image / video / print  
Smart Search by specific event

- General Motion
- Missing Object
- Foreign Object
- Lose Focus
- Camera Occlusion

### User Group Authority

Alarm Management  
View Alarm Image  
View Live Video  
View Recorded Video  
PTZ Control  
Control Digital Output  
Remote Desktop  
View and Search POS transaction  
Audio / Talk  
Access Devices

### User Authority

User/Password  
Phone Number  
Email / Phone number  
User Group  
Coverage  
Matrix View Groups

### Support Language

Chinese (Simplified)  
Chinese (Traditional)  
Danish  
English  
Finnish  
French  
Hebrew  
Hungarian  
Japanese  
Korean  
Portuguese (Brasil)  
Russian  
Serbian  
Spanish  
Thai

## Technical Specification

### System Requirement

#### Setup A: Install all components on one Server (PC)

	CPU	RAM	Hard Disk	Display	LAN	OS
One Server	Intel Core 2 Quad Q9550 @ 2830MHz	2GB or above	250GB or above	ATI X4350 or nVidia GeForce 9500 or above	Gigabit LAN	MS Winodws XP Pro SP3 / Vista / 2003 / 7 / 2008 R2

#### Setup B: Install components on four Server (PC); CMS Client and Matrix on PC1, CMS Server on PC2, SQL Server on PC3 and another Matrix on PC4

	CPU	RAM	Hard Disk	Display	LAN	OS
PC1	Intel Core 2 Quad Q6660 @ 2400MHz	2GB or above	250GB or above	ATI X4350 or above	Gigabit LAN	MS Winodws XP Pro SP3 / Vista / 2003 / 7 / 2008 R2
PC2	Intel Core 2 Duo E4500	1GB or above	250GB or above	ATI X1600 or above	Gigabit LAN	MS Winodws XP Pro SP3 / Vista / 2003 / 7 / 2008 R2
PC3	Intel Core 2 Duo E4500	1GB or above	250GB or above	ATI X1600 or above	Gigabit LAN	MS Winodws XP Pro SP3 / Vista / 2003 / 7 / 2008 R2
PC4	Intel Core 2 Quad Q6660 @ 2400MHz	2GB or above	250GB or above	ATI X4350 or above	Gigabit LAN	MS Winodws XP Pro SP3 / Vista / 2003 / 7 / 2008 R2

### Supported Camera Models

	IP CamSecure Pro Mega Series
Model name	FCS-94 04/08/16/25/36/64
Camera Support	
LevelOne	FCS-0010, FCS-0020, FCS-0030, FCS-0040, FCS-1010, FCS-1030, FCS-1040, FCS-1050, FCS-1060, FCS-1070, FCS-1081, FCS-1081A, FCS-1091, FCS-1101, FCS-1121, FCS-1131, FCS-1141, FCS-1151, FCS-3000, FCS-0031, FCS-3021, FCS-3031, FCS-3051, FCS-3061, FCS-3071, FCS-3081, FCS-3091, FCS-4x00, FCS-4020, FCS-7011, WCS-0010, WCS-0020, WCS-0030, WCS-0040, WCS-1090, WCS-2010, WCS-2030, WCS-2040, WCS-2060, WCS-2070, FCS-4010, FCS-5011, FCS-5030, FCS-5041, FCS-5051, FCS-7111, FCS-8005, FCS-8006
ACTi	SED 2100, SED 2120, SED 2140, SED 2400, SED 2420, SED 2600, SED 2610, SEM 1110, ACM SERIES, CAM 5300, CAM 5130, CAM 5140, CAM 5150, CAM 5500, CAM 6100, CAM 6200, CAM 6500, CAM 6510, CAM 6520, CAM 6600, CAM 7100, CAM 7120, CAM 7200, CAM 7220, CAM 7300, CAM 7320, CAM 6620, SED 2310, SED2320, CAM 5200, CAM 5XXX, CAM 6220, CAM 6XXX, CAM 7XXX, SEM 1XXX
Arecont Vision	AV1300, AV2000, AV2100, AV3100, AV3130, AV5100, AV8180, AV8360
ATLANTIS LAND	A02-OIPCAM1, A02-OIPCAM2, A02-OIPCAM3, A02-IPCAM5, A02-IPCAM6, A02-IPCAM7, A02-IPCAM8, A02-IPCAM9, A02-IPCAM10, A02-IPCAM11, A02-IPCAM12, A02-IPCAM13, A02-IPCAM14, A02-IPCAM15, A02-IPCAM16, A02-IPCAM17
AXIS	205, 206, 206M, 206W, 207, 207W, 207MW, 209FD, 210, 210A, 211, 211A, 212, 213, 214, 215, 216FD, 221, 225FD, 231D, 232D, 240Q, 241Q, 241QA, 241S, 241SA, 242S, 2460, 233D
D-Link	DCS-6620, DCS-6620G, DCS-5220, DCS-5300, DCS-5300G, DCS-2120, DCS-3420, DCS-3220, DCS-3220G, DCS-2100, DCS-2100G, DVS-104, DVS-301, DCS-900, DCS-G900, DCS-950, DCS-950G
ETROVISION	EVxx10
Hitron	HNCB-E1SN, HNG-E1SAW054, HWD125MN, HECMC4V0C4
FINE	TCP-690, TCP-690DN, TCP-HP930, WB-8211SD, WB-8411, CDV-3V930, TCP-690U, TCP-HP930U, WB-8211SDU, CDV-3V930U, EP-936, EP-908, EP-601, EP-201, EP-221, EP-221DN
IQin	IQeye301, IQeye301m, IQeye301w, IQeye302, IQeye302w, IQeye303, IQeye303w, IQeye501, IQeye511, IQeye601, IQeye602, IQeye603, IQeye701, IQeye702, IQeye703, IQeye705, IQeye751, IQeye752, IQeye753, IQeye755
JVC	VN-C20U, VN-E4(U), VN-C205U, VN-C215U, VN-C655U
Lumenera	le045c, le045c-dn, le075c, le075c-dn, le165c, le165c-dn, le175c, le175c-dn, le259c, le275c, le275c-dn, le375c, le375c-dn, le11059c
MOBOTIX	M10D-Night, M12D-Sec, M12D-IT-DNight, M12D-Sec-Dnight, M12M-Web, M22M-IT, M22M-Sec, M22M-Sec-Night, D12Di-IT, D12Di-Sec
Panasonic	BB-HCM311, BB-HCM331, BB-HCM371, BB-HCM381, BB-HCE481, BB-HCS301, BB-HCM511, BB-HCM515, BB-HCM581, BL-C10, BL-C1, BL-C20, BL-C30, BL-C111, BL-C131, KX-HCM110, KX-HCM280A, WV-NP472, WV-NS324, WV-NF284, WV-NP1000, WV-NP1004, WV-NM100, WV-NP240, WV-NP244, WV-NS202, WV-NW484, WV-NW964
PiXORD	100, 120/126/128, 200/206, 201, 205, 207, 240, 241, 261, 262, 263, 300, 400/42X, 461, 463, 1000, 1401, 2000, 4000, 8504, 405, 405M, 410, 411/412
PLANET	ICA-510, ICA-700, ICA-151W, ICA-151, ICA-750, ICA-107W, ICA-107P, ICA-107
PROBE	IP Fixed Camera, IP PTZ Camera
SAMSUNG	C6475
SONY	SNC-DF40, SNC-DF70, SNC-P1, SNC-P5, SNC-RZ25, SNC-RZ50, SNC-RX550, SNC-CS50, SNC-CS3, SNC-Z20, SNC-RZ30, SNC-CS10, SNC-CS11, SNT-V704, SNC-RX530, SNC-DF50, SNC-DF80
TOSHIBA	IK-WB02A, IK-WR01A, IK-WB21A, IK-WB15A

### Supported Camera Models

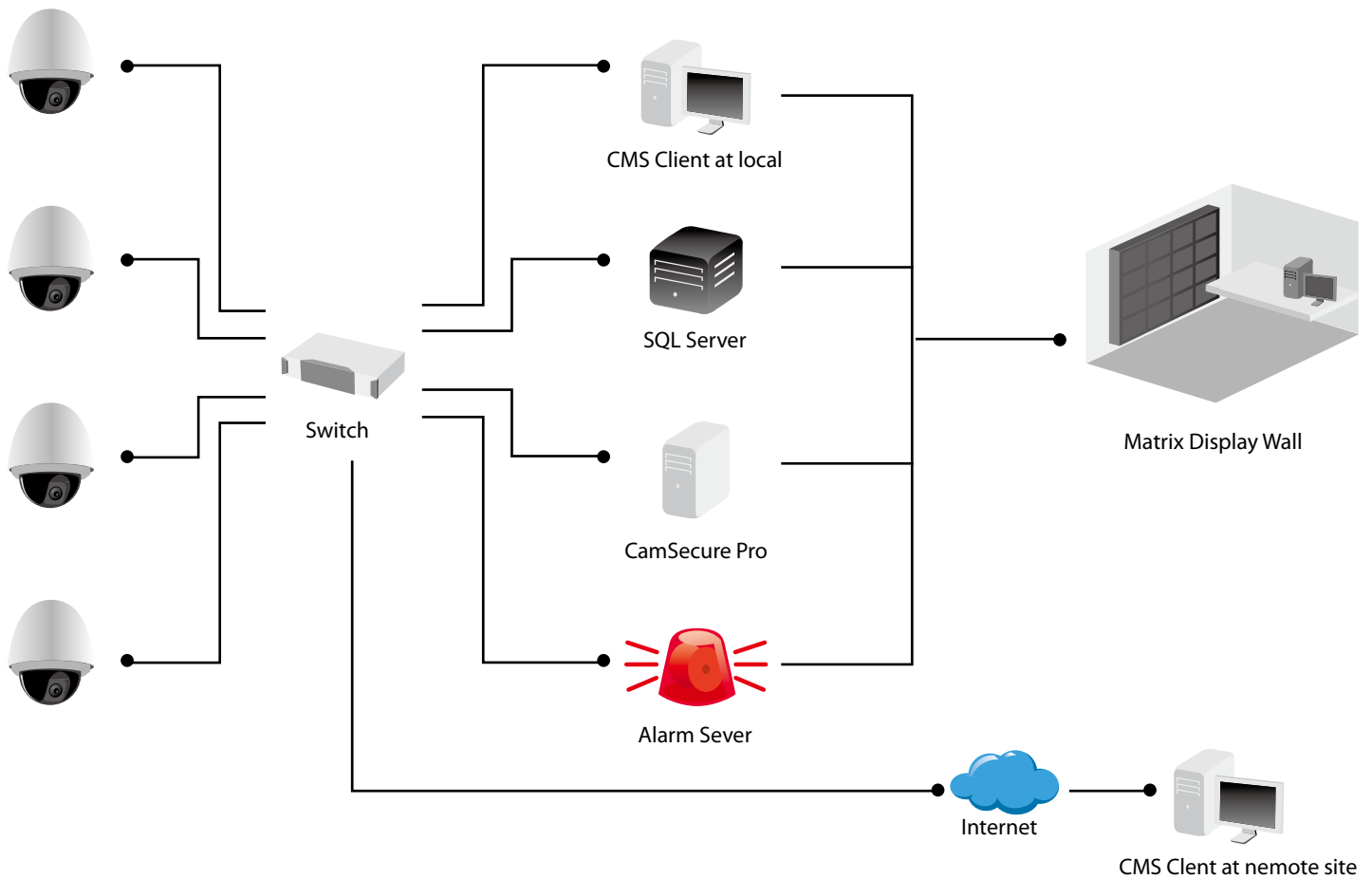
IP CamSecure Pro Mega Series	
<b>Model name</b>	<b>FCS-94 04/08/16/25/36/64</b>
<b>Camera Support</b>	
<b>VIVOTEK</b>	VS 2101, VS 2401, VS 2402, VS 2403, VS 3100, VS 3101, VS 3102, VS 3102-XLTH, VS 3103, VS 3107, VS 3108, VS 6000, VS 6100, VS 6104, VS 7000, VS 7101, SD 6000, SD 6101, SD 61x2, FD 6000, FD 61x1, FD 61x2, TC 5330, TC 5331, TC 5630, TC 5631, IP 21x1, IP 21x2, IP 31x1, TLFN, IP 31x1, IP 31x2, IP 31x7, IP 31x8, IP 3129, IP 3132, IP 3133, IP 3134, IP 3135-PLNX, IP 3135, IP 3136-PLNX, IP 3136, IP 3137, IP 51x2, IP 51x4, IP 5104, IP 5114, IP 5124, IP 5134, IP 6000, IP 61x2, IP 61x4, IP 61x7, IP 6104, IP 6114, IP 6124, IP 6134, IP 7000, IP 71x4, IP 71x7, IP 7135, IP 7136, IP 7137, IP 7151, IP 7152, PT 31x2, PT 31x3, PT 31x4, PT 31x7, PT 31X2, PT 31X3, PT 3134, PT 51x4, PT 5104, PT 5114, PT 5124, PT 5134, PT 6000, PT 61x4, PT 6104, PT 6114, PT 6124, PT 6134, PT 7000, PT 7135, PT 7137, PZ 6000, PZ 61x2, PZ 61x4, IP 7131, IP 7132, IP 7138, IP 7139, VS 7100, FD7131, SD7151, IP7142
<b>ZAVIO</b>	D611E, D611A, D610A, F611E, F611A, F610A, V111T, S610A, F721E, F721A, F720A, F711E, F711A, F710A, F211A, F210A, F212A, F310A, F312A, M210A, M212A, M610A, M612A, F613A, F510E, F510W, F511E, F511W, F711E, F710E, D510E, D511E, M310A, M312A

\*Please visit <http://global.level1.com> for the compatible product list.

\*\*This feature depends on the mobile telecom service provided and the mobile phone model. LevelOne does not guarantee that this feature will work in all countries.

\*\*\*The specification is subject to change. Please visit <http://global.level1.com> for the latest specification.

### Product Diagram



### Order Information

**FCS-9900:** Central Management System (Includes 48CH License, 8 I/O

**FCS-9900-CH:** Per Cam license for CMS

**FCS-9900-IO:** Per IO license for CMS

**FCS-9900-AC:** Per Access Control license for CMS

\*30 days free trail software is available, please contact our Sales at [sales@level1.com](mailto:sales@level1.com)