

ATLANTIC VERSION TERMINATOR INTERFACE ADAPTER	PART NUMBER	REVISION	DESCRIPTION	FEED TYPE	APPLICATOR STYLE CONVERSION CHART					
					CONVERT TO	PART NUMBERS REQUIRED				
	2150472-2	D	FINE CRIMP HEIGHT ADJUST	PNEUMATIC	-	-	-	-	-	-
	2150472-5	D	FINE CRIMP HEIGHT ADJUST	SERVO LATCH PLATE	2119951-1	1901697-1	8-2150472-5	-	-	2168400-7 (QUANTITY 2)
	2150472-6	D	NON-CRIMP HEIGHT ADJUST	SERVO LATCH PLATE	-	-	-	-	-	-
	2150472-7	D	FINE CRIMP HEIGHT ADJUST	NONE	-	-	-	-	-	-
	7-2150472-7	A	CRIMP TOOLING KIT	-	-	-	-	-	-	-

APPLICATOR DATA		
CRIMP SIZE	TYPE	
WIRE 6.35 mm [.250]	F	
INSUL 9.53 mm [.375]	O	
APPL INSTRUCTIONS 408-10390		

TERMINAL DATA: TE TERMINAL TE CRIMP SPECIFICATION			
TERMINAL NAME: RING TONGUE			
WIRE STRIP LENGTH	INSULATION DIAMETER RANGE		
5.18-5.94 mm [.204-.234 IN]	Ø5.59-8.00 mm [.220-.315 IN]		
TERMINAL APPLICATION SPECIFICATION	114-2084		
TERMINALS APPLIED			
TE TERMINAL	TE TERMINAL	TE TERMINAL	TE TERMINAL
42899-1	42913-1	61352-1	
42899-2	42913-2	61352-2	
42899-3	42913-3		

TERMINAL DATA: TE TERMINAL TE CRIMP SPECIFICATION			
TERMINAL NAME: RING TONGUE			
WIRE STRIP LENGTH	INSULATION DIAMETER RANGE		
5.18-5.94 mm [.204-.234 IN]	Ø5.59-8.00 mm [.220-.315 IN]		
TERMINAL APPLICATION SPECIFICATION	114-2084		
TERMINALS APPLIED			
TE TERMINAL	TE TERMINAL	TE TERMINAL	TE TERMINAL
41808	41808-1	41809	41809-1

WIRE SIZE	CRIMP HEIGHT mm [INCH]	CRIMP HEIGHT REFERENCE SETTING
6 AWG	4.85+/-0.05 [.191+/- .002]	4.7
8 AWG	4.22+/-0.05 [.166+/- .002]	11.7
10 AWG	3.81+/-0.05 [.150+/- .002]	9.8

WIRE SIZE	CRIMP HEIGHT mm [INCH]	CRIMP HEIGHT REFERENCE SETTING
8 AWG	4.57+/-0.05 [.180+/- .002]	5.7
10 AWG	4.24+/-0.05 [.167+/- .002]	9.3

- RECOMMENDED SPARE PARTS
- GREASE BEARING SURFACES LIGHTLY
- LUBRICATE DAILY PER THE APPLICATOR INSTRUCTION SHEET SUPPLIED WITH THE APPLICATOR.
- APPLICATOR SPECIFIC DATA TO BE ENTERED INTO BLANK MEMORY CHIP AT ASSEMBLY. SEE BELOW FOR PART NUMBER:
 PNEUMATIC FEED WITH "SMART APPLICATOR" CONVERSION: 8-2150472-4
 SERVO FEED WITH "FINE CRIMP HEIGHT ADJUST": 8-2150472-5
 SERVO FEED WITH "NON-CRIMP HEIGHT ADJUST": 8-2150472-6
- ADJUSTMENT OF THE STRIPPER MAY BE REQUIRED WHEN MOVING THE APPLICATOR BETWEEN BENCH AND LEADMAKER APPLICATIONS.
- APPLY PART NUMBER 1-23419-5 LOCTITE TO THREADS OF ITEM 62. APPLY PART NUMBER 2-23419-6 LOCTITE TO THREADS OF ITEM 242. FOR -6 ONLY APPLY PART NUMBER 1-23419-5 LOCTITE TO THREADS OF ITEMS 37.
- GREASE THREADS, GROOVE AND O-RING ON ITEMS 35 & 252.
- MAGNET, ITEM 166 MUST BE ORIENTED CORRECTLY IN ORDER TO PROPERLY ACTUATE THE COUNTER.
- CRIMP HEIGHT REFERENCE SETTING WAS THE SETTING USED WHEN THE APPLICATOR WAS QUALIFIED AT THE FACTORY. ADJUSTMENT MAY BE NECESSARY WHEN RUNNING APPLICATOR IN THE FIELD.
- TERMINAL PITCH NOT COMPATIBLE WITH MECHANICAL FEED.
- THE RECOMMENDED SET-UP FOR END FEED APPLICATORS IS POST-FEED WITH ITEM 2119653-1. THE APPLICATOR CAN BE CONFIGURED FOR PRE-FEED WITH ITEM 2119652-1 BUT MAY ENCOUNTER PROBLEMS WITH SOME APPLICATIONS. FEED ISSUES OR TERMINAL JAMMING MAY OCCUR IN THE PRE-FEED CONFIGURATION.
- WHEN ASSEMBLING -6 NON-CRIMP HEIGHT ADJUST APPLICATOR USE SHIM PACK 2119957-2 TO ALIGN APPLICATOR'S MAXIMUM WIRE CRIMP HEIGHT AT NORMAL TERMINATOR SHUT HEIGHT
- REPLACE ITEM 38 WITH ITEM 221 WHEN RUNNING THE 3.81mm CRIMP HEIGHT.
- TERMINAL LUBRICANT IS RECOMMENDED.

***WARNING**
 ON INSTALLATION, SET WIRE DISC, ITEM 40 TO LARGEST WIRE SIZE SETTING. USE OF SETTINGS BELOW MINIMUM REQUIRED CRIMP HEIGHT SETTING WILL CAUSE DAMAGE TO CRIMP TOOLING.

-77	-7	-6	-5	-2	2119957-2	APPLICATOR SHIM PACK	260
ITEM NO	PART NO	DESCRIPTION	ITEM NO				

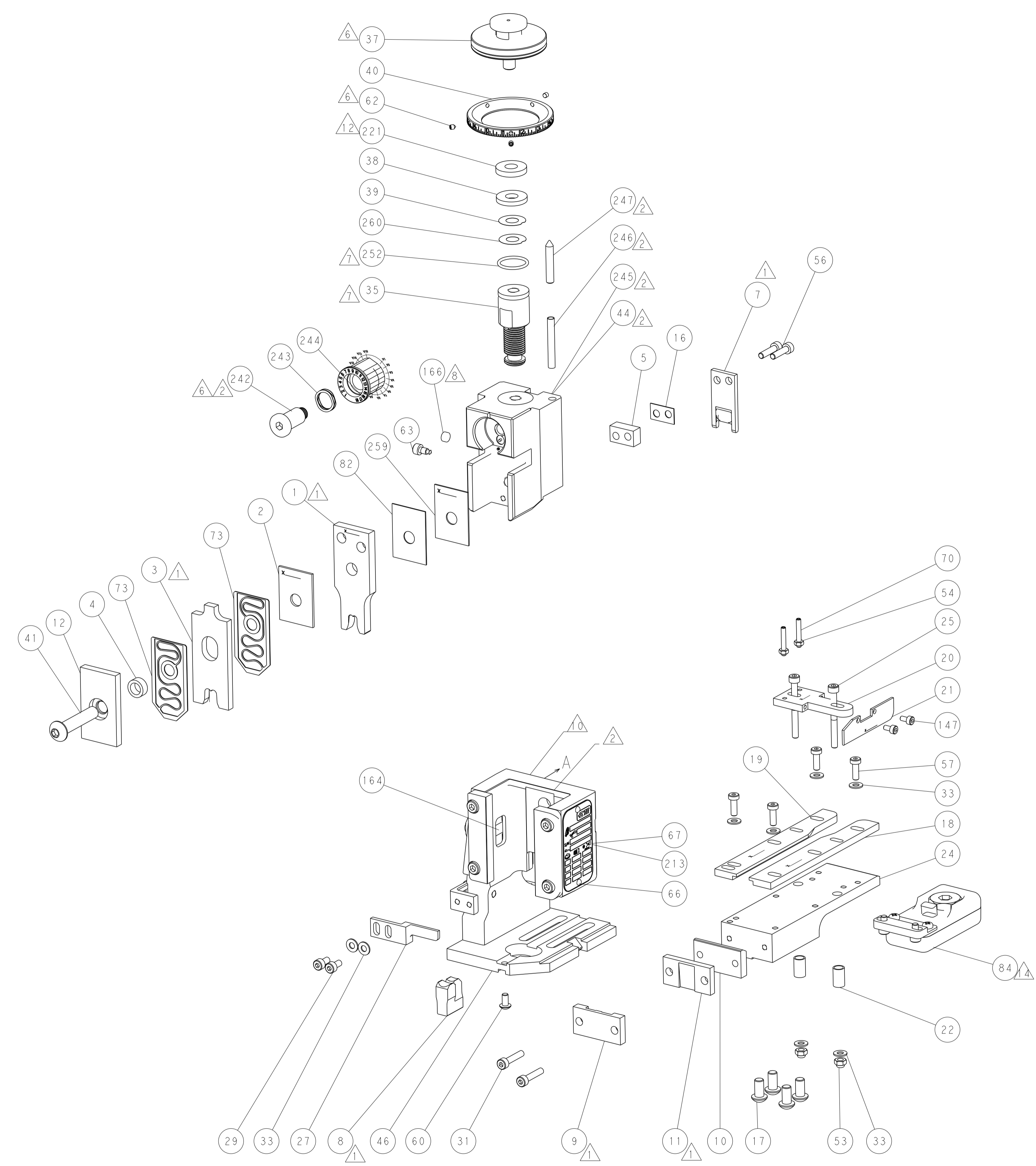
ATLANTIC VERSION
 Shown on sheets 1 of 4 & 2 of 4
 (Pacific version shown on sheets 3 of 4 & 4 of 4)

SET UP GAUGE	LOC	DIST	REVISIONS					
2119599-2	A	66	P	LTN	DESCRIPTION	DATE	OWN	APVD
			A		RELEASED	11DEC2014	RK	TE
			B		ECR-15-006500	24APR2015	BW	JT
			C		ECR-17-001142	25JAN2017	TB	TE
			D		ECR-17-001842	09FEB2017	TB	CT

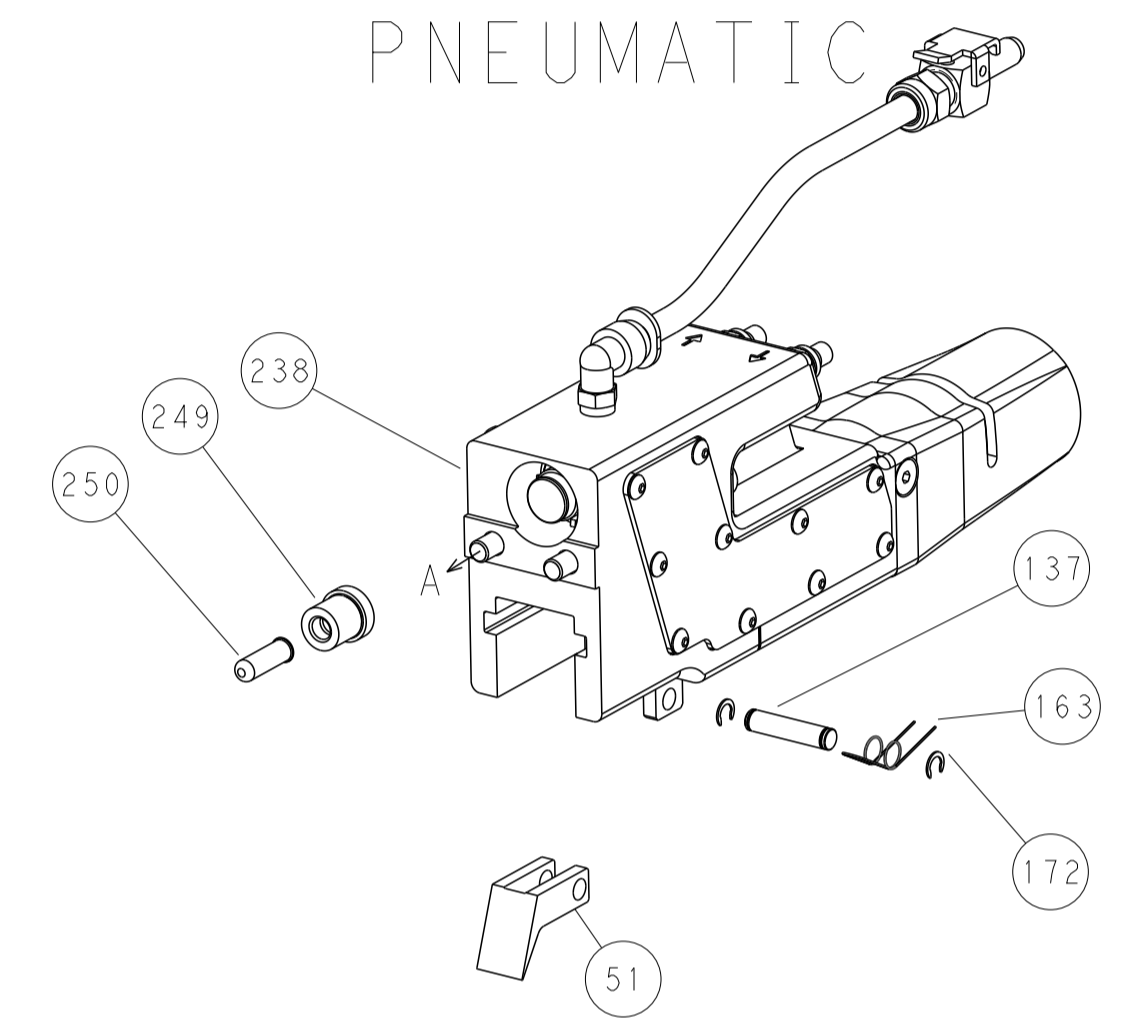
-	1	1	1	1	1803078-1	SPACER, PRECISION	259
-	1	-	1	1	8-21084-0	O-RING, .676 ID, .070 DIA. MAT.	252
-	-	-	-	1	2119640-1	PUSH ROD, AIR FEED	250
-	-	-	-	1	1803259-1	BUSHING, FLANGED	249
-	-	-	-	1	2119641-1	FEED CAM, AIR FEED	248
-	1	-	1	1	2119798-1	DETENT PIN	247
-	1	-	1	1	1-22279-3	SPRING, COMPRESSION	246
-	-	1	-	-	2161315-1	RAM, STEPPED, AMP STYL, EF, NON-ADJUST	245
-	1	1	1	1	2119082-8	CAM, SNAIL, INSULATION ADJUSTMENT	244
-	1	1	1	1	2079764-1	WASHER, WAVE SPRING, CREST-TO-CREST	243
-	1	1	1	1	2119083-1	RETAINER, INSULATION DIAL	242
-	-	2	2	-	2168400-7	SHCS, LOW HEAD, RoHS, M5 X 10	240
-	-	-	-	1	2063440-2	AIR FEED MODULE	238
-	1	1	1	1	2119644-6	RAM WASHER, PRECISION	221
-	-	1	1	-	2119740-2	TAG, IDENTIFICATION	213
-	-	REFREF	-	-	1901697-1	FEED FINGER ASSEMBLY, EF	183
-	-	-	-	2	21045-3	RING, RETAIN, EXTERN, 3/16 CRESCENT	172
-	1	1	1	1	994969-1	MAGNET, RARE EARTH HIGH ENERGY	166
-	-	REFREFREFREF	-	-	994970-2	COUNTER, MAGNETIC	164
-	-	-	-	1	240638-1	SPRING, FEED FINGER	163
-	2	2	2	2	1-2168083-1	SCR, SKT HD CAP, RoHS, M3 X 6	147
-	-	-	-	1	3-23627-7	PIN, RETAIN, GRVD, 3/16 X .854	137
-	-	REFREF	-	-	SEE NOTE 4	MEMORY CHIP, PROGRAMMED	135
-	-	1	1	-	1633743-1	SERVO FEED LATCH ASM	133
-	1	1	1	1	2119955-2	ASSY, LUBRICATOR, END FEED	84
-	1	1	1	1	455888-5	SPACER, CRIMPER	82
-	2	2	2	2	1-2119791-4	DEPRESSOR, WIRE	73
-	1	1	1	1	2119956-2	DOCUMENTATION PACKAGE	71
-	2	2	2	2	3-18032-3	SCR, SET, FLT POINT M3 X 20.0	70
-	1	-	-	1	2119740-1	TAG, IDENTIFICATION	67
-	2	2	2	2	2168078-1	SCREW, DRIVE, RH, RoHS, 2 x .188	66
-	1	-	1	1	2119793-1	LIMITER, ADJUSTMENT BOLT	63
-	3	-	3	3	992763-5	SCR, SET, SOC, CONE POINT, M3 x 4.0	62
-	1	1	1	1	2079383-4	SCR, BHSC, RoHS (M4 X 8)	60
-	4	4	4	4	2168400-1	SHCS, LOW HEAD, RoHS, M4 X 12	57
-	2	2	2	2	2168083-8	SCR, SKT HD CAP, RoHS, M4 X 16	56
-	2	2	2	2	5018030-1	NUT, HEX, REG, RoHS, M3	54
-	2	2	2	2	986965-8	NUT, LOCK, HEX, TORQUE (M4)	53
-	-	-	-	1	2119792-3	PAWL, EF, AIR	51
-	-	-	-	1	18023-9	SCR, SKT HD CAP M4 X 6.0	49
-	1	1	1	1	2119655-5	APPLICATOR BASIC ASSEMBLY, EF	46
-	1	-	1	1	2161310-1	RAM, STEPPED, AMP STYLE, END FEED	44
-	1	1	1	1	1-2079383-5	SCR, BHSC, RoHS (M8 X 40)	41
-	1	-	1	1	2119645-1	DISC, NUMBERED FA WIRE ADJUSTMENT	40
-	1	-	1	1	2119957-1	APPLICATOR SHIM PACK	39
-	1	1	1	1	2119644-8	RAM WASHER, PRECISION	38
-	1	1	1	1	2119085-1	FA HEAD, ATLANTIC STYLE	37
-	1	-	1	1	2119092-1	BOLT, ADJUSTMENT	35
-	8	8	8	8	1-18028-2	WASHER, FLAT, REG M4	33
-	2	2	2	2	2168083-9	SCR, SKT HD CAP, RoHS, M4 X 20	31
-	2	2	2	2	2168083-2	SCR, SKT HD CAP, RoHS, M4 X 8.0	29
-	1	1	1	1	2280534-1	STRIPPER, OFFSET	27
-	2	2	2	2	1-2168083-7	SCR, SKT HD CAP, RoHS, M4 X 40	25
-	1	1	1	1	2-1752371-5	PLATE, STRIP GUIDE	24
-	2	2	2	2	2-22281-1	SPRING, COMPRESSION	22
-	1	1	1	1	1-464452-7	DRAG, STOCK	21
-	1	1	1	1	1633168-2	ARM, STOCK DRAG	20
-	1	1	1	1	3-1901696-5	STRIP GUIDE, REAR	19
-	1	1	1	1	3-1901695-5	STRIP GUIDE, FRONT	18
-	4	4	4	4	1-2079383-1	SCR, BHSC, RoHS (M6 X 12)	17
-	1	1	1	1	2-240641-1	SPACER	16
-	1	1	1	1	1803203-1	BLOCK, FRONT DEPRESSOR	12
-	1	1	1	1	240644-1	PLATE, REAR SHEAR	11
-	1	1	1	1	1803071-1	SPACER, REAR SHEAR STRIP GUIDE	10
-	1	1	1	1	3-690482-7	PLATE, FRONT SHEAR	9
-	1	1	1	1	1803003-1	ANVIL, COMBINATION, END FEED	8
-	1	1	1	1	2-2217206-0	BLADE, SLUG	7
-	-	-	-	-	-	-	6
-	1	1	1	1	2-240641-7	SPACER	5
-	1	1	1	1	1-238011-4	BLOCK, CRIMPER SPACER	4
-	1	1	1	1	7-1633962-6	CRIMPER, INSULATION F PREMIUM	3
-	1	1	1	1	1-455888-4	SPACER, CRIMPER	2
-	1	1	1	1	456432-3	CRIMPER, WIRE	1

DIMENSIONS:		TOLERANCES UNLESS OTHERWISE SPECIFIED:		MATERIAL:	
mm	0 PLC ±	1 PLC ±	2 PLC ±	3 PLC ±	4 PLC ±
	ANGLES ±	FINISH ±			
WEIGHT		SCALE		SHEET	
Customer Accessible Production Drawing		1:1		1 of 4	

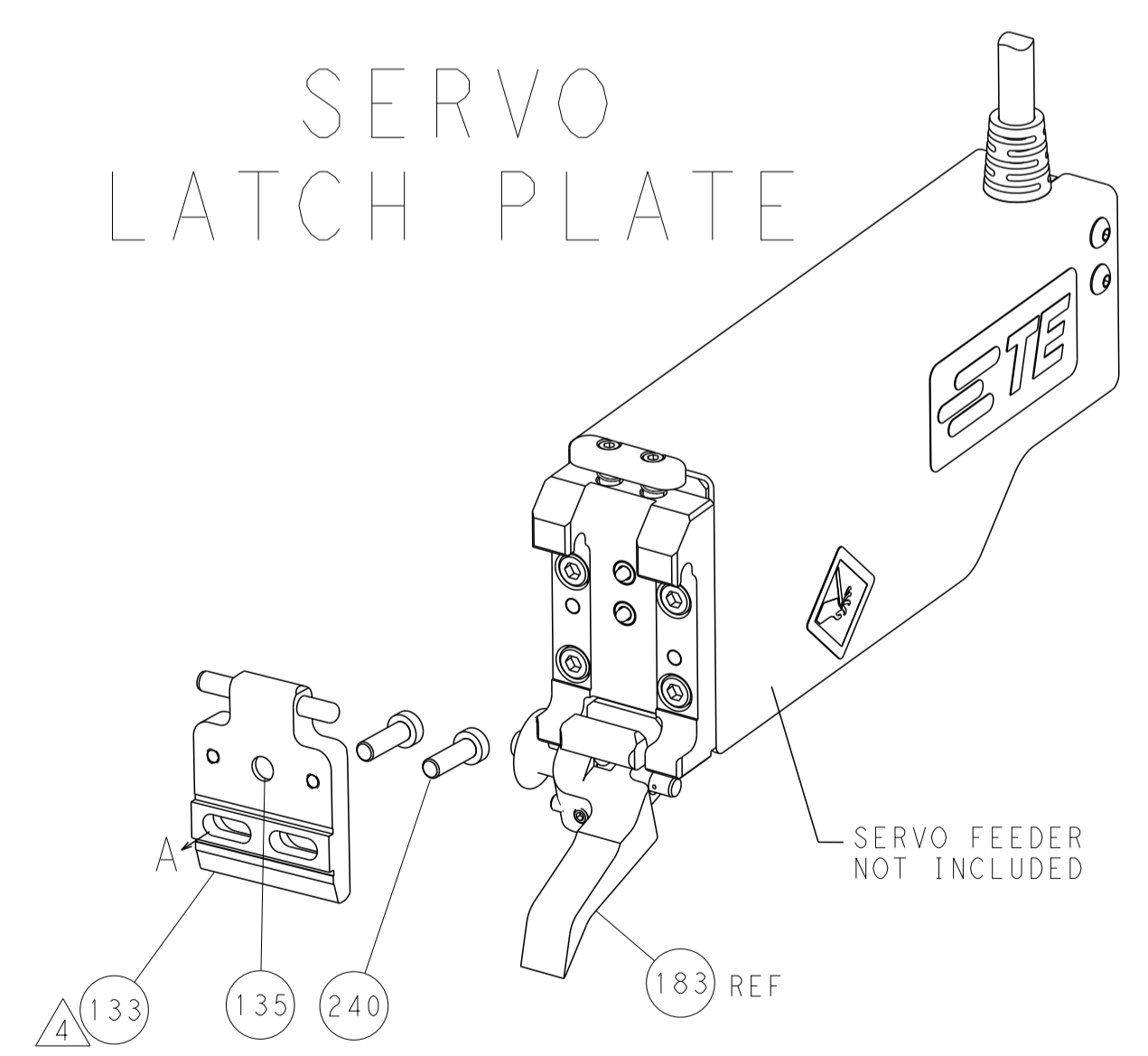
LOC	DIST	REV	DATE	BY	APPV
A	66				
REVISIONS			DESCRIPTION	DATE	BY
			SEE SHEET 1		



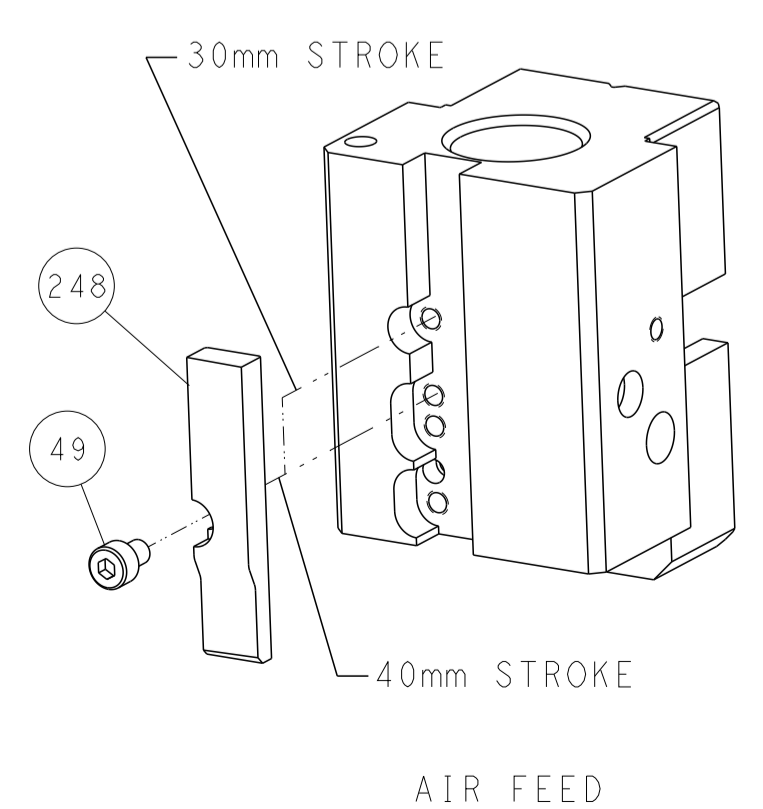
FEED TYPE
PNEUMATIC



SERVO
LATCH PLATE



CAM POSITION



ATLANTIC VERSION
 Shown on sheets 1 of 4 & 2 of 4
 (Pacific version shown on sheets 3 of 4 & 4 of 4)

DIMENSIONS:		TOLERANCES UNLESS OTHERWISE SPECIFIED:		OWN	K. STAKEM	20AUG2014	TE Connectivity Harrisburg, PA 17105-3608
mm	0 PLC	±		CHK	G. BAILEY	20AUG2014	
	1 PLC	±		APPV	T. ELBIN	20AUG2014	NAME
	2 PLC	±					PRODUCT SPEC
	3 PLC	±					APPLICATION SPEC
	4 PLC	±					SIZE
	ANGLES	±					CAGE CODE
	FINISH	±					DRAWING NO
MATERIAL				WEIGHT			RESTRICTED TO
Customer Accessible Production Drawing		SCALE	1:1	SHEET	2	OF	4
		REV					

PACIFIC VERSION TERMINATOR INTERFACE ADAPTER	PART NUMBER	REVISION	DESCRIPTION	FEED TYPE
	2-2150472-2	D	FINE CRIMP HEIGHT ADJUST	PNEUMATIC
	2-2150472-5	D	FINE CRIMP HEIGHT ADJUST	SERVO LATCH PLATE ⁴
	2-2150472-7	D	FINE CRIMP HEIGHT ADJUST	NONE
	7-2150472-7	A	CRIMP TOOLING KIT	-

APPLICATOR DATA		
CRIMP	SIZE	TYPE
WIRE	6.35 mm [.250]	F
INSUL	9.53 mm [.375]	O
APPL INSTRUCTIONS 408-10390		

TERMINAL DATA: TE TERMINAL		TE CRIMP SPECIFICATION	
TERMINAL NAME: RING TONGUE			
WIRE STRIP LENGTH		INSULATION DIAMETER RANGE	
5.18-5.94 mm [.204-.234 IN]		Ø5.59-8.00 mm [.220-.315 IN]	
TERMINAL APPLICATION SPECIFICATION	114-2084	-	-
TERMINALS APPLIED ¹⁰ ¹³			
TE TERMINAL	TE TERMINAL	TE TERMINAL	TE TERMINAL
42899-1	42913-1	61352-1	
42899-2	42913-2	61352-2	
42899-3	42913-3		

WIRE SIZE	CRIMP HEIGHT mm [INCH]	CRIMP HEIGHT REFERENCE SETTING ⁹
6 AWG	4.85+/-0.05 [.191+/- .002]	4.7
8 AWG	4.22+/-0.05 [.166+/- .002]	11.7
10 AWG ¹²	3.81+/-0.05 [.150+/- .002]	9.8

- RECOMMENDED SPARE PARTS
- GREASE BEARING SURFACES LIGHTLY
- 3. LUBRICATE DAILY PER THE APPLICATOR INSTRUCTION SHEET SUPPLIED WITH THE APPLICATOR.
- ⁴ APPLICATOR SPECIFIC DATA TO BE ENTERED INTO BLANK MEMORY CHIP AT ASSEMBLY. SEE BELOW FOR PART NUMBER:
PNEUMATIC FEED WITH "SMART APPLICATOR" CONVERSION: 8-2150472-4
SERVO FEED WITH "FINE CRIMP HEIGHT ADJUST": 8-2150472-5
- 5. ADJUSTMENT OF THE STRIPPER MAY BE REQUIRED WHEN MOVING THE APPLICATOR BETWEEN BENCH AND LEADMAKER APPLICATIONS.
- ⁶ APPLY PART NUMBER 1-23419-5 LOCTITE TO THREADS OF ITEM 62.
APPLY PART NUMBER 2-23419-6 LOCTITE TO THREADS OF ITEM 242.
- ⁷ GREASE THREADS, GROOVE AND O-RING ON ITEMS 139 & 153.
- ⁸ MAGNET, ITEM 166 MUST BE ORIENTED CORRECTLY IN ORDER TO PROPERLY ACTUATE THE COUNTER.
- ⁹ CRIMP HEIGHT REFERENCE SETTING WAS THE SETTING USED WHEN THE APPLICATOR WAS QUALIFIED AT THE FACTORY. ADJUSTMENT MAY BE NECESSARY WHEN RUNNING APPLICATOR IN THE FIELD.
- ¹⁰ TERMINAL PITCH NOT COMPATIBLE WITH MECHANICAL FEED.
- ¹¹ THE RECOMMENDED SET-UP FOR END FEED APPLICATORS IS POST-FEED WITH ITEM 2119653-1. THE APPLICATOR CAN BE CONFIGURED FOR PRE-FEED WITH ITEM 2119652-1 BUT MAY ENCOUNTER PROBLEMS WITH SOME APPLICATIONS. FEED ISSUES OR TERMINAL JAMMING MAY OCCUR IN THE PRE-FEED CONFIGURATION.
- ¹² REPLACE ITEM 38 WITH ITEM 221 WHEN RUNNING THE 3.81mm CRIMP HEIGHT.
- ¹³ TERMINAL LUBRICANT IS RECOMMENDED.

TERMINAL DATA: TE TERMINAL		TE CRIMP SPECIFICATION	
TERMINAL NAME: RING TONGUE			
WIRE STRIP LENGTH		INSULATION DIAMETER RANGE	
5.18-5.94 mm [.204-.234 IN]		Ø5.59-8.00 mm [.220-.315 IN]	
TERMINAL APPLICATION SPECIFICATION	114-2084	-	-
TERMINALS APPLIED ¹⁰ ¹³			
TE TERMINAL	TE TERMINAL	TE TERMINAL	TE TERMINAL
41808	41808-1	41809	41809-1

WIRE SIZE	CRIMP HEIGHT mm [INCH]	CRIMP HEIGHT REFERENCE SETTING ⁹
8 AWG	4.57+/-0.05 [.180+/- .002]	5.7
10 AWG	4.24+/-0.05 [.167+/- .002]	9.3

***WARNING**
ON INSTALLATION, SET WIRE DISC, ITEM 40 TO LARGEST WIRE SIZE SETTING. USE OF SETTINGS BELOW MINIMUM REQUIRED CRIMP HEIGHT SETTING WILL CAUSE DAMAGE TO CRIMP TOOLING.

PACIFIC VERSION
Shown on sheets 3 of 4 & 4 of 4
(Atlantic version shown on sheets 1 of 4 & 2 of 4)

SET UP GAUGE	LOC	DIST	REVISIONS					
2119599-2	A	66	P	LTM	DESCRIPTION	DATE	OWN	APVD
			-	-	SEE SHEET 1	-	-	-

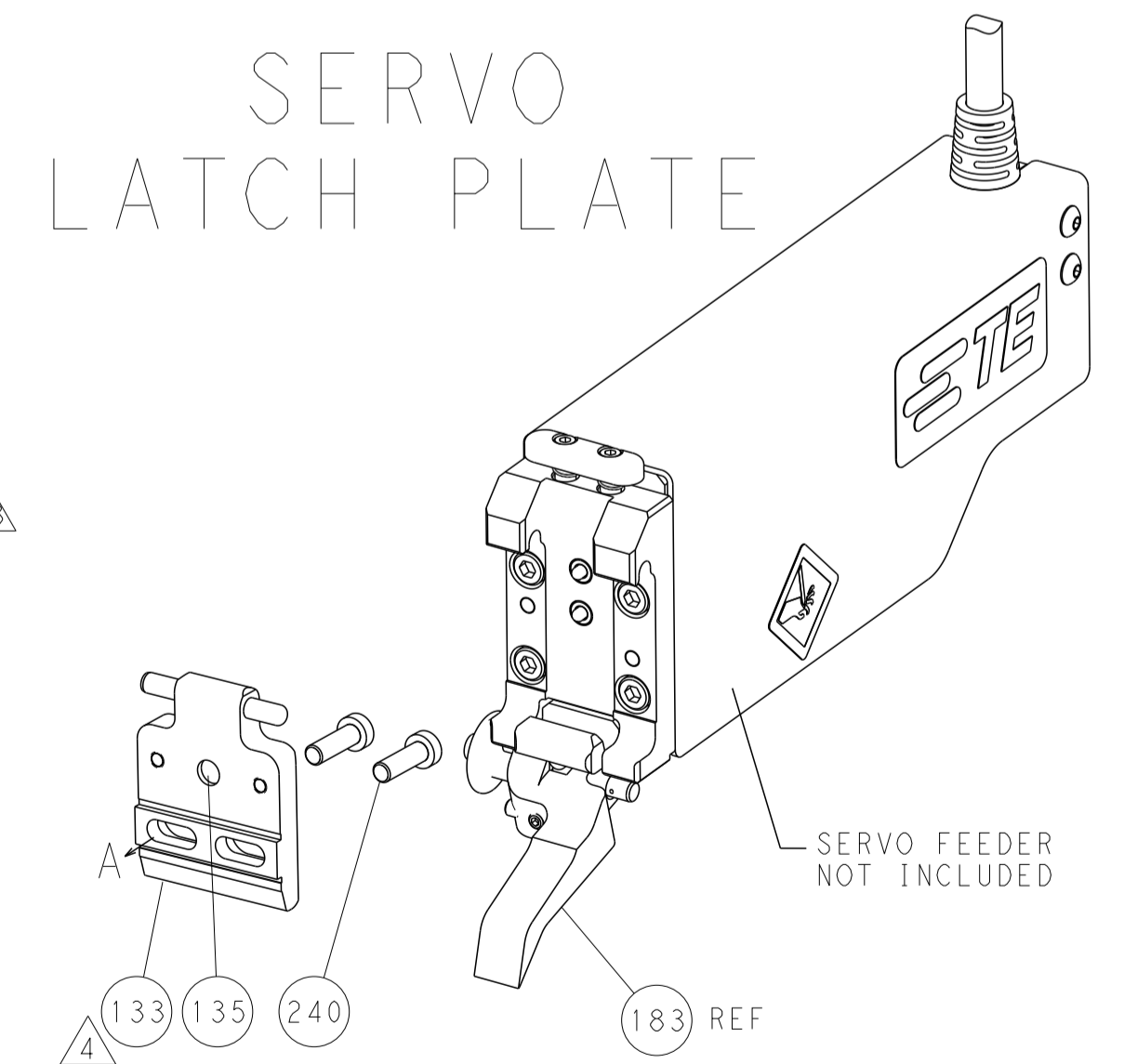
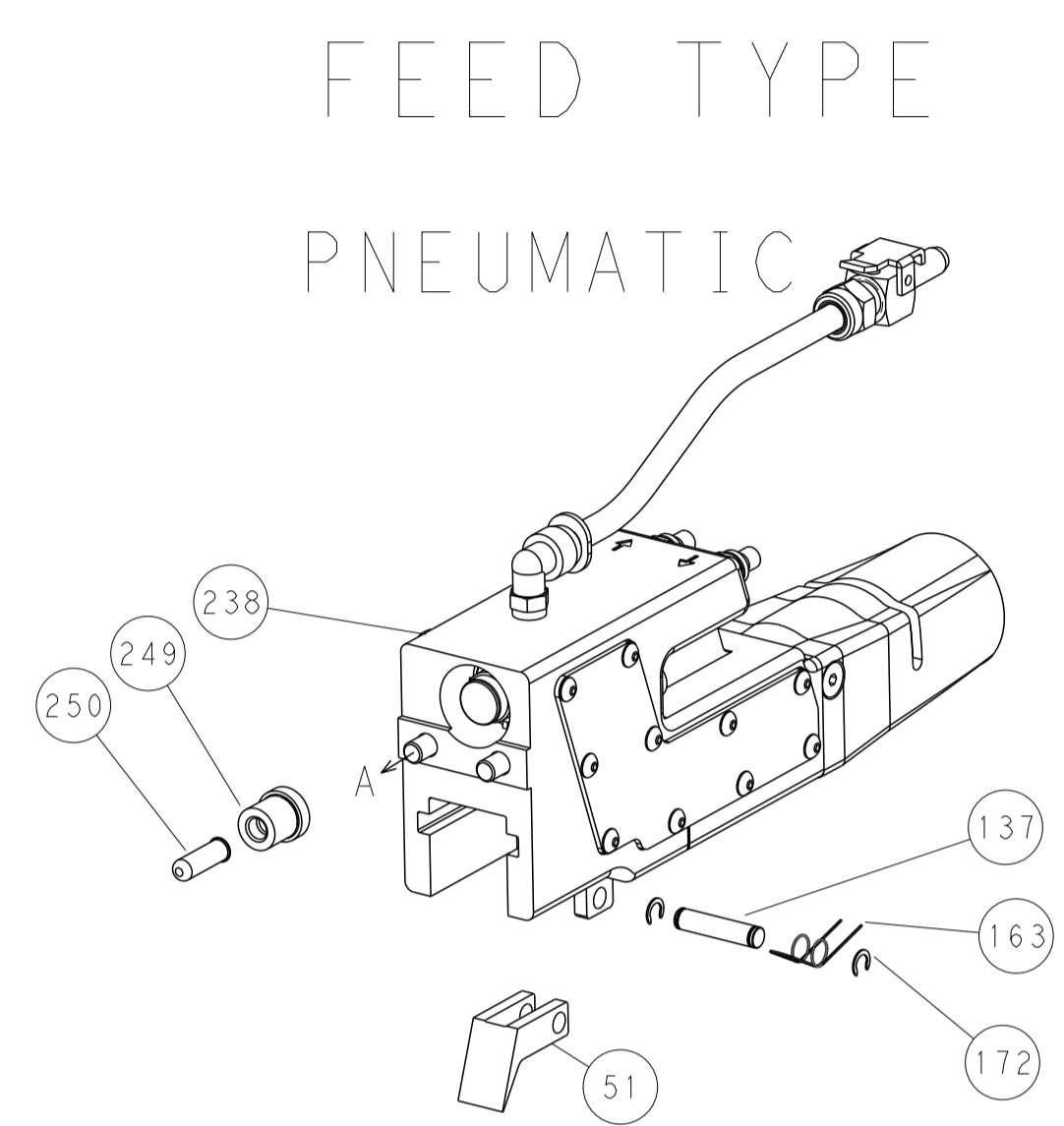
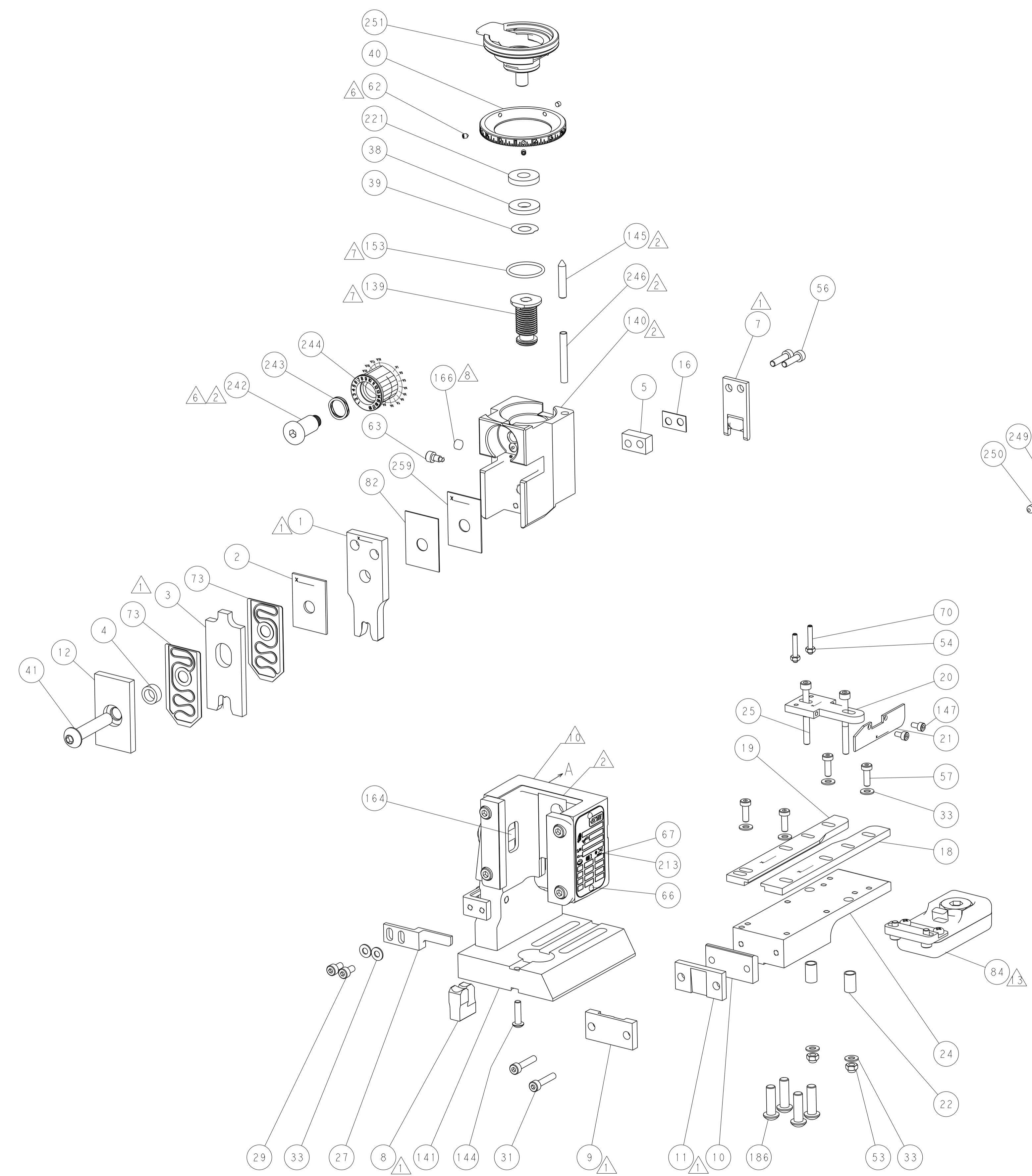
-	1	1	1	1803078-1	SPACER, PRECISION			259
-	1	1	1	2119782-1	FINE ADJUST HEAD ASM, PACIFIC STYLE			251
-	-	-	1	2119640-1	PUSH ROD, AIR FEED			250
-	-	-	1	1803259-1	BUSHING, FLANGED			249
-	1	1	1	1-22279-3	SPRING, COMPRESSION			246
-	1	1	1	2119082-8	CAM, SNAIL, INSULATION ADJUSTMENT			244
-	1	1	1	2079764-1	WASHER, WAVE SPRING, CREST-TO-CREST			243
⁶	-	1	1	2119083-1	RETAINER, INSULATION DIAL			242
-	-	2	-	2168400-7	SHCS, LOW HEAD, RoHS, M5 X 10			240
-	-	-	1	2063440-2	AIR FEED MODULE			238
⁷	-	1	1	2119644-6	RAM WASHER, PRECISION			221
-	-	1	-	2119740-2	TAG, IDENTIFICATION			213
-	4	4	4	2079383-9	SCR, BHSC, RoHS (M6 X 20)			186
-	-	REF	-	1901697-1	FEED FINGER ASSEMBLY, EF			183
-	-	-	2	21045-3	RING, RETAIN, EXTERN, 3/16 CRESCENT			172
-	-	-	1	994969-1	MAGNET, RARE EARTH HIGH ENERGY			166
-	REF	REF	REF	994970-2	COUNTER, MAGNETIC			164
-	-	-	1	240638-1	SPRING, FEED FINGER			163
⁷	-	1	1	8-21084-1	O-RING, .801 ID, .070 DIA. MAT.			153
-	-	-	1	2119641-2	FEED CAM, AIR FEED			152
-	2	2	2	1-2168083-1	SCR, SKT HD CAP, RoHS, M3 X 6			147
-	1	1	1	2119798-2	DETENT PIN			145
-	1	1	1	2079383-8	SCR, BHSC, RoHS (M4 X 16)			144
-	-	-	-	2119653-2	FEED CAM, POST FEED			142
-	1	1	1	2119655-6	APPLICATOR BASIC ASSEMBLY, EF			141
-	1	1	1	2161313-1	RAM, STEPPED, ASIAN STYLE, END FEED			140
⁷	-	1	1	2119092-2	BOLT, ADJUSTMENT			139
-	-	-	1	3-23627-7	PIN, RETAIN, GRVD, 3/16 X .854			137
-	-	REF	-	SEE NOTE 4	MEMORY CHIP, PROGRAMMED			135
-	-	-	1	1633743-1	SERVO FEED LATCH ASM			133
³	-	1	1	2119955-2	ASSY, LUBRICATOR, END FEED			84
-	1	1	1	455888-5	SPACER, CRIMPER			82
-	2	2	2	1-2119791-4	DEPRESSOR, WIRE			73
-	1	1	1	2119956-2	DOCUMENTATION PACKAGE			71
-	2	2	2	3-18032-3	SCR, SET, FLT POINT M3 X 20.0			70
-	1	-	1	2119740-1	TAG, IDENTIFICATION			67
-	2	2	2	2168078-1	SCREW, DRIVE, RH, RoHS, 2 x .188			66
⁶	-	1	1	2119793-1	LIMITER, ADJUSTMENT BOLT			63
-	3	3	3	992763-5	SCR, SET, SOC, CONE POINT, M3 x 4.0			62
-	4	4	4	2168400-1	SHCS, LOW HEAD, RoHS, M4 X 12			57
-	2	2	2	2168083-8	SCR, SKT HD CAP, RoHS, M4 X 16			56
-	2	2	2	5018030-1	NUT, HEX, REG, RoHS, M3			54
-	2	2	2	986965-8	NUT, LOCK, HEX, TORQUE (M4)			53
-	-	-	1	2119792-3	PAWL, EF, AIR			51
-	-	-	1	18023-9	SCR, SKT HD CAP M4 X 6.0			49
-	1	1	1	1-2079383-5	SCR, BHSC, RoHS (M8 X 40)			41
-	1	1	1	2119645-1	DISC, NUMBERED FA WIRE ADJUSTMENT			40
-	1	1	1	2119957-1	APPLICATOR SHIM PACK			39
-	1	1	1	2119644-8	RAM WASHER, PRECISION			38
-	8	8	8	1-18028-2	WASHER, FLAT, REG M4			33
-	2	2	2	2168083-9	SCR, SKT HD CAP, RoHS, M4 X 20			31
-	2	2	2	2168083-2	SCR, SKT HD CAP, RoHS, M4 X 8.0			29
-	1	1	1	2280534-1	STRIPPER, OFFSET			27
-	2	2	2	1-2168083-7	SCR, SKT HD CAP, RoHS, M4 X 40			25
-	1	1	1	2-1752371-5	PLATE, STRIP GUIDE			24
-	2	2	2	2-22281-1	SPRING, COMPRESSION			22
-	1	1	1	1-464452-7	DRAG, STOCK			21
-	1	1	1	1633168-2	ARM, STOCK DRAG			20
-	1	1	1	3-1901696-5	STRIP GUIDE, REAR			19
-	1	1	1	3-1901695-5	STRIP GUIDE, FRONT			18
-	1	1	1	2-240641-1	SPACER			16
-	1	1	1	1803203-1	BLOCK, FRONT DEPRESSOR			12
¹	-	1	1	240644-1	PLATE, REAR SHEAR			11
¹	-	1	1	1803071-1	SPACER, REAR SHEAR STRIP GUIDE			10
¹	-	1	1	3-690482-7	PLATE, FRONT SHEAR			9
¹	1	1	1	1803003-1	ANVIL, COMBINATION, END FEED			8
¹	-	1	1	2-2217206-0	BLADE, SLUG			7
-	-	-	-	-	-			6
-	1	1	1	2-240641-7	SPACER			5
-	1	1	1	1-238011-4	BLOCK, CRIMPER SPACER			4
¹	1	1	1	7-1633962-6	CRIMPER, INSULATION F PREMIUM			3
¹	-	1	1	1-455888-4	SPACER, CRIMPER			2
¹	1	1	1	456432-3	CRIMPER, WIRE			1

DIMENSIONS:		TOLERANCES UNLESS OTHERWISE SPECIFIED:		DRAWN		CHK		APVD		NAME	
mm	0 PLC ±	1 PLC ±	2 PLC ±	3 PLC ±	4 PLC ±	5 PLC ±	6 PLC ±	7 PLC ±	8 PLC ±	9 PLC ±	10 PLC ±
	ANGLES	FINISH									
MATERIAL											

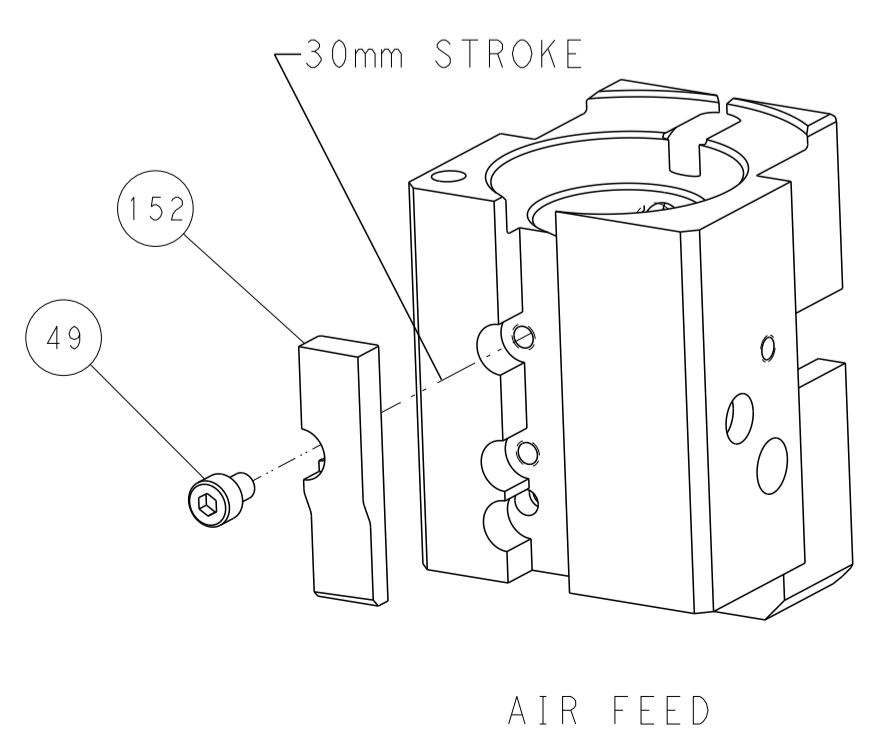


Ocean End Feed Applicator

LOC	DIST	REVISIONS					
A	66	P	LTM	DESCRIPTION	DATE	DWN	APVD
		-	-	SEE SHEET 1	-	-	-



CAM POSITION



PACIFIC VERSION
 Shown on sheets 3 of 4 & 4 of 4
 (Atlantic version shown on sheets 1 of 4 & 2 of 4)

<small>THIS DRAWING IS UNPUBLISHED. RELEASED FOR PUBLICATION. ALL RIGHTS RESERVED. © 2014 BY TYCO ELECTRONICS CORPORATION. THIS IS THE PROPERTY OF COMPANY AND IS NOT TO BE REPRODUCED OR TRANSMITTED IN ANY FORM OR BY ANY MEANS, ELECTRONIC OR MECHANICAL, INCLUDING PHOTOCOPYING, RECORDING, OR BY ANY INFORMATION STORAGE AND RETRIEVAL SYSTEM, WITHOUT PERMISSION IN WRITING FROM TYCO ELECTRONICS CORPORATION.</small>		DWN: R. STAKEM 20AUG2014 CHK: G. BAILEY 20AUG2014 APVD: T. ELRLIN 20AUG2014	TE Connectivity Harrisburg, PA 17105-3608
DIMENSIONS: mm TOLERANCES UNLESS OTHERWISE SPECIFIED: 0 PLC ± 1 PLC ± 2 PLC ± 3 PLC ± 4 PLC ± ANGLES ± MATERIAL: - FINISH: -	NAME: Ocean End Feed Applicator SIZE: A1 CAGE CODE: 00779 DRAWING NO: C=2150472 SCALE: 1:1 SHEET: 4 OF 4 REV: D	PRODUCT SPEC: APPLICATION SPEC: WEIGHT: Customer Accessible Production Drawing	RESTRICTED TO: -