

## Features

- Three phase filter delta.
- EN55011 class A & B.
- Applies to CE marking.

## Applications

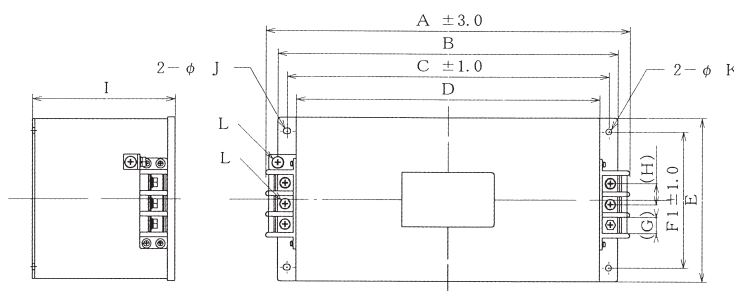
- Inverter power supplies, UPS and servo-operated machinery.



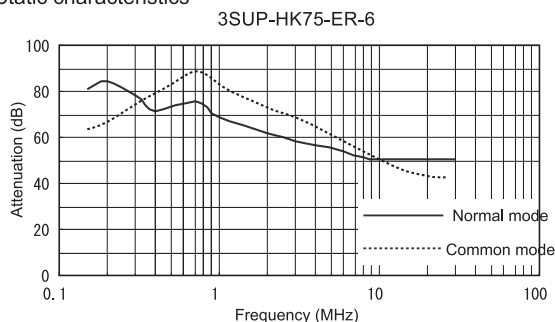
Safety Agency : Standard	File No.
TUV : EN133200	R9950784



3SUP-HK□-ER-6 (30~200A)



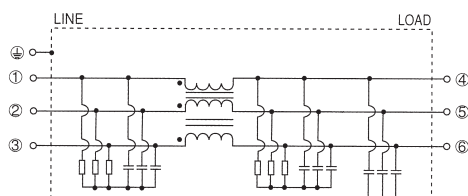
Static characteristics



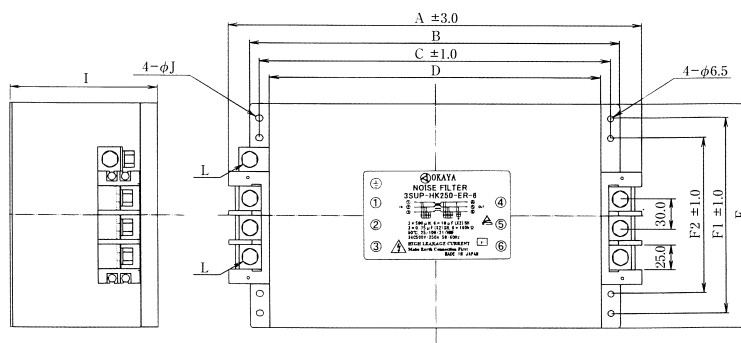
Dimensions

	A	B	C	D	E	F1	F2	G	H	I	J	K	L
3SUP-HK30-ER-6	226	210	195	180	120	90	—	13	18	100	5.5×7	5.5	M4
3SUP-HK50-ER-6	256	240	225	210	130	90	—	13	18	100	5.5×7	5.5	M6
3SUP-HK75-ER-6	306	280	260	240	150	110	—	18	23	110	6.5×8	6.5	M6
3SUP-HK100-ER-6	306	280	260	240	150	110	—	18	23	110	6.5×8	6.5	M6
3SUP-HK150-ER-6	364	320	300	280	180	150	—	25	30	130	6.5×8	6.5	M8
3SUP-HK200-ER-6	384	340	320	300	210	180	—	25	30	140	6.5×8	6.5	M8
3SUP-HK250-ER-6	424	380	360	340	230	200	160	25	30	150	6.5×8	6.5	M8

Circuit



3SUP-HK250-ER-6



## Electrical Specifications

Rated Voltage **500VAC**

Safety Agency	Model Number	Rated Current (A)	Test Voltage	Insulation Resistance	Leakage Current (max)	Voltage Drop (max)	Temperature Rise (max)	Operating Temperature (°C)	Insertion losses	
									Normal Mode (MHz)	Common Mode (MHz)
	3SUP-HK30-ER-6	30	Line to Ground 2000Vrms 50/60Hz 60sec	Line to Ground 6000MΩmin (at 500Vdc)	250mA (at 500Vrms 60Hz)	1.0Vrms	35deg	-25 ~ +50	*1 0.15 ~ 10	*2 0.15 ~ 10
	3SUP-HK50-ER-6	50							*1 0.15 ~ 10	*2 0.15 ~ 10
	3SUP-HK75-ER-6	75							*2 0.15 ~ 10	*2 0.15 ~ 10
	3SUP-HK100-ER-6	100							*2 0.15 ~ 10	*2 0.15 ~ 10
	3SUP-HK150-ER-6	150							*3 0.15 ~ 10	*3 0.15 ~ 10
	3SUP-HK200-ER-6	200							*3 0.15 ~ 10	*3 0.15 ~ 10
3SUP-HK250-ER-6	250	*4 0.15 ~ 10	*4 0.15 ~ 10							

Guaranteed attenuation of \*1 is more than 50dB, \*2 is more than 30dB, \*3 is more than 25dB and \*4 is more than 20dB.